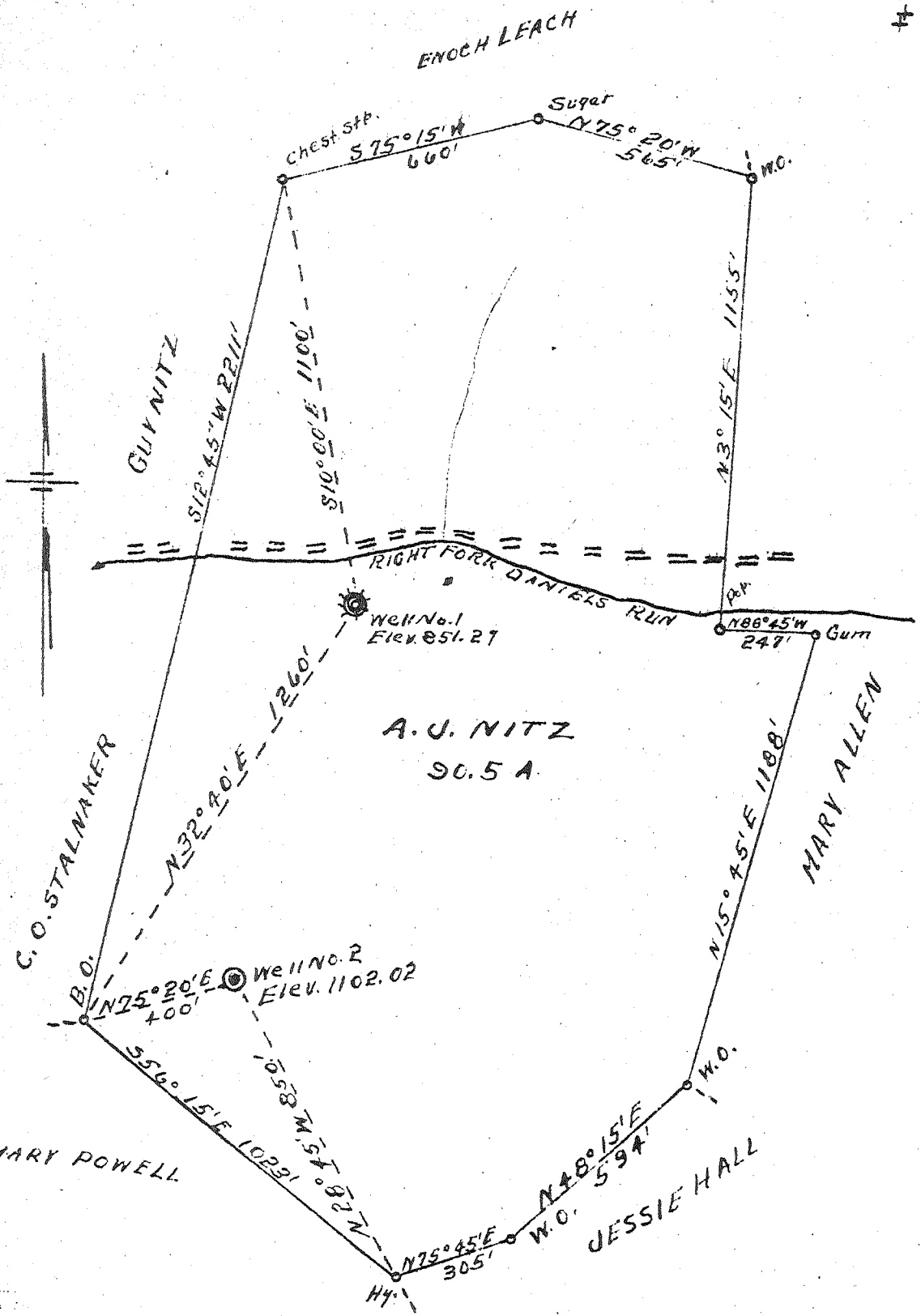


0.56W  
1.41S



New Location   
 Drill Deeper   
 Abandonment

Company CALHOUN OIL & GAS CO.  
 Address SPENCER, W. VA.  
 Farm A. J. NITZ  
 Tract \_\_\_\_\_ Acres 90.5 Lease No. \_\_\_\_\_  
 Well (Farm) No. 3 L&P Serial No. \_\_\_\_\_  
 Elevation (Spirit Level) #1851.27 #2 1102.02  
 Quadrangle ARNOLDSBURG  
 County CALHOUN District L&E  
 Engineer R. F. Dye  
 Engineer's Registration No. 804  
 File No. \_\_\_\_\_ Drawing No. \_\_\_\_\_  
 Date 11-12-15 Scale 1" = 400'

STATE OF WEST VIRGINIA  
 DEPARTMENT OF MINES  
 OIL AND GAS DIVISION  
 CHARLESTON

WELL LOCATION MAP  
 FILE NO. CAL-202A

203A

+ Denotes location of well on United States Topographic Maps, scale 1 to 62,500, latitude and longitude lines being represented by border lines as shown.  
 - Denotes one inch spaces on border line of original tracing.



358

STATE OF WEST VIRGINIA  
DEPARTMENT OF MINES  
OIL AND GAS DIVISION

WELL RECORD

Permit No. 203-A

Oil or Gas Well Oil & Gas  
(KIND)

Company Calhoun Oil & Gas Company  
 Address Spencer, W. Va.  
 Farm A. G. Nitz Acres \_\_\_\_\_  
 Location (waters) \_\_\_\_\_  
 Well No. 1 Elev. 851.27  
 District Lee County Calhoun  
 The surface of tract is owned in fee by \_\_\_\_\_  
 Address \_\_\_\_\_  
 Mineral rights are owned by \_\_\_\_\_  
 Address \_\_\_\_\_  
 Drilling commenced December 13, 1927  
 Drilling completed \_\_\_\_\_  
 Date Shot \_\_\_\_\_ From \_\_\_\_\_ To \_\_\_\_\_  
 With 40 qts.  
 Open Flow \_\_\_\_\_ /10ths Water in \_\_\_\_\_ Inch  
 \_\_\_\_\_ /10ths Merc. in \_\_\_\_\_ Inch  
 Volume \_\_\_\_\_ Cu. Ft.  
 Rock Pressure \_\_\_\_\_ lbs. \_\_\_\_\_ hrs.  
 Oil 5 bbls., 1st 24 hrs.  
 Fresh water \_\_\_\_\_ feet \_\_\_\_\_ feet  
 Salt water \_\_\_\_\_ feet \_\_\_\_\_ feet

Casing and Tubing	Used in Drilling	Left in Well	Packers
Size			
16			Kind of Packer
13			
10			Size of
8 3/4			
6 5/8	1862		Depth set
5 3/16			
3			Perf. top
2	2018		Perf. bottom
Liners Used			Perf. top
			Perf. bottom

CASING CEMENTED \_\_\_\_\_ SIZE \_\_\_\_\_ No. Ft. \_\_\_\_\_ Date \_\_\_\_\_  
 COAL WAS ENCOUNTERED AT \_\_\_\_\_ FEET \_\_\_\_\_ INCHES  
 \_\_\_\_\_ FEET \_\_\_\_\_ INCHES FEET \_\_\_\_\_ INCHES  
 \_\_\_\_\_ FEET \_\_\_\_\_ INCHES FEET \_\_\_\_\_ INCHES

Formation	Color	Hard or Soft	Top	Bottom	Oil, Gas or Water	Depth Found	Remarks
Little Dunkard			770	800			
Big Dunkard			950	985			
Gas Sand			1030	1200			
1st Salt Sand			1455	1560			
2d Salt Sand			1605	1690			
Maxton			1775	1845			
Little Lime			1845	1880			
Pencil			1880	1887			
Big Lime			1887	1952			
Big Injun Sand			1952	2027	Gas - 1968 Oil - 2010		
Total Depth				2027			

