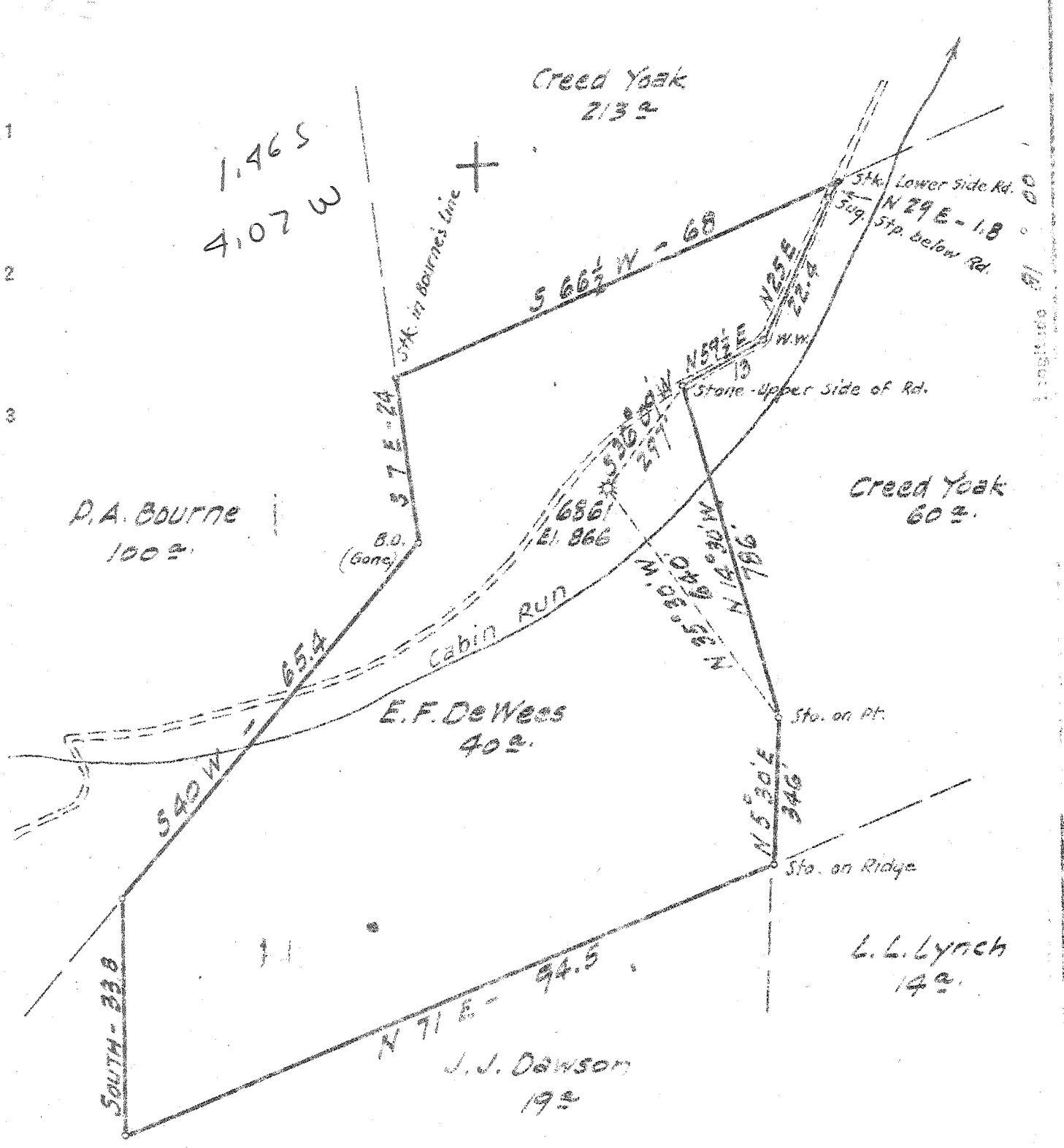


M

Latitude 38 30'



New Location   
 Drill Deeper   
 Abandonment

BK 604 P. 17-18  
 766 " 22

Company HOPE NATURAL GAS CO  
 Address CLARKSBURG, W. VA.  
 Farm E. F. DEWESS  
 Tract \_\_\_\_\_ Acres 40 Lease No. 39567  
 Well (Farm) No. 1 Serial No. 6861  
 Elevation (Spirit Level) 866  
 Quadrangle ARNOLDSBURG  
 County CALHOUN District SMERMAN  
 Engineer W.M. Bowles  
 Engineer's Registration No. 900  
 File No. \_\_\_\_\_ Drawing No. \_\_\_\_\_  
 Date OCT. 11, 1944 Scale 1" = 20 P.

STATE OF WEST VIRGINIA  
 DEPARTMENT OF MINES  
 OIL AND GAS DIVISION  
 CHARLESTON

WELL LOCATION MAP  
 FILE NO. CAL-187-A

+ Denotes location of well on United States Topographic Maps, scale 1 to 62,500. latitude and longitude lines being represented by border lines as shown.  
 - Denotes one inch spaces on border line of original tracing.



STATE OF WEST VIRGINIA  
DEPARTMENT OF MINES  
OIL AND GAS DIVISION

3411

Ab 187-A

WELL RECORD

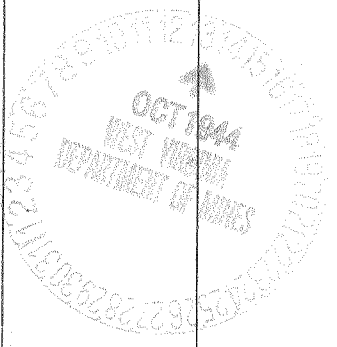
Permit No. \_\_\_\_\_ Oil or Gas Well \_\_\_\_\_ (KIND)

Company Hopa Natural Gas Company.  
 Address 445 West Main St. Clarksburg, W. Va.  
 Farm E. F. DeWees Acres 41  
 Location (waters) \_\_\_\_\_  
 Well No. 6861 Elev. 866  
 District Sherman County Calhoun  
 The surface of tract is owned in fee by \_\_\_\_\_  
 Address \_\_\_\_\_  
 Mineral rights are owned by \_\_\_\_\_  
 Address \_\_\_\_\_  
 Drilling commenced February 9, 1925  
 Drilling completed March 3, 1925  
 Date Shot \_\_\_\_\_ From \_\_\_\_\_ To \_\_\_\_\_  
 With \_\_\_\_\_  
 Open Flow \_\_\_\_\_ /10ths Water in \_\_\_\_\_ Inch  
 \_\_\_\_\_ /10ths Merc. in \_\_\_\_\_ Inch  
 Volume \_\_\_\_\_ Cu. Ft.  
 Rock Pressure \_\_\_\_\_ lbs. \_\_\_\_\_ hrs.  
 Oil \_\_\_\_\_ bbls., 1st 24 hrs.  
 Fresh water 50- 265 feet \_\_\_\_\_ feet  
 Salt water none recorded feet \_\_\_\_\_ feet

Casing and Tubing	Used in Drilling	Left in Well	Packers
Size			
16			Kind of Packer
13			
10	<u>280</u>	<u>27</u>	Size of
8 1/4	<u>844</u>	<u>844</u>	
6 5/8	<u>1981</u>	<u>1981</u>	Depth set
5 3/16			
3			Perf. top
2	<u>1988</u>	<u>1988</u>	Perf. bottom
Liners Used			Perf. top
			Perf. bottom

CASING CEMENTED Not cemented SIZE \_\_\_\_\_ No. Ft. \_\_\_\_\_ Date \_\_\_\_\_  
 COAL WAS ENCOUNTERED AT None recorded FEET \_\_\_\_\_ INCHES  
 \_\_\_\_\_ FEET \_\_\_\_\_ INCHES FEET \_\_\_\_\_ INCHES  
 \_\_\_\_\_ FEET \_\_\_\_\_ INCHES FEET \_\_\_\_\_ INCHES

Formation	Color	Hard or Soft	Top	Bottom	Oil, Gas or Water	Depth Found	Remarks
					<u>water</u>	<u>50- 265</u>	
	Sand		514	520			
	Little Dunkard		705	725			
	Big Dunkard		825	970			
	Gas sand		980	1140			
	First salt		1146	1185			
	Second salt		1255	1310			
	Third salt		1545	1700	<u>show gas</u>	<u>1560-1639</u>	
	Maxon		1733	1794	<u>oil gas</u>	<u>1672</u>	
					<u>oil</u>	<u>1760-1765</u>	<u>show</u>
	Little Lime		1804	1830			
	Pencil cave 4		1830	1836			
	Blue Munday		1836	1853			
	Big Lime		1853	1915			
	Big Injun		1915	2014	<u>gas</u>	<u>1953- 1958</u>	
	Berea		2325	2330			
	Gantz		2420	2430			
	Sand		2494	2497			
	Total depth			2605.			
			<u>Filled back to 1988</u>	<u>1988</u>			



JAN 29 1945

