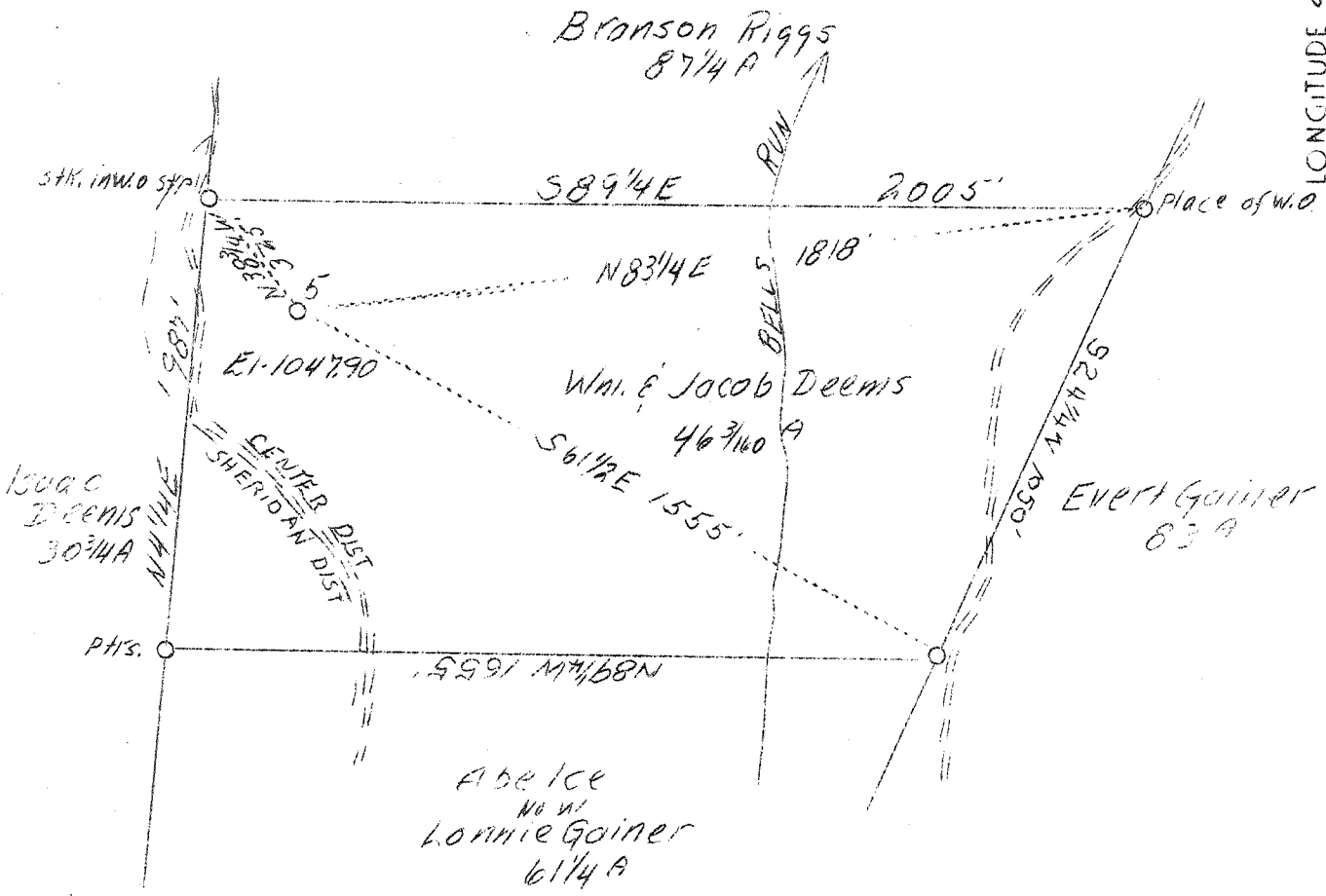


LATITUDE 38° 55'



LONGITUDE 81° 10'



Surface:
 Lonnie Gainer
 Calhoun Co. Jaker, W. Va.
 No Coal

W-0.30
 S-0.52

A.B.D.

Company	South Penn Oil Co.
Address	411-7th Ave., Pgh. Pa.
Farm	Wm. & Jacob Deems
Acres	48
Lease No.	64911
Well (Farm) No.	5
Elevation (SL)	1047.90
Quadrangle	Arnoldsburg
County	Calhoun
District	Center
Engineer	E. C. Tabler
Eng. Reg. No.	-
Date	August 2, 1939
Scale	1" = 400'

STATE OF WEST VIRGINIA
 Department of Mines
 OIL & GAS DIVISION
 Charleston

WELL LOCATION MAP

File No. Cal-109-A

x Denotes location of well on U. S. Topographic Maps, scale 1 to 62,500, latitude and longitude lines being represented by border lines as shown.

- Denotes one inch spaces on border line of original tracing.

WEST VIRGINIA DEPARTMENT OF MINES
OIL AND GAS DIVISION

257

WELL RECORD

Ab 109-A

Permit No. _____ Oil or Gas Well OIL
(Kind)

Company South Penn Oil Company
Address 411 Seventh Ave., Pittsburgh, Pa.
Farm Wm. & Jacob Deems Acres 48
Location (waters) Little Kanawha River
Well No. 5 Elev. 1047.90'
District Center County Calhoun
The surface of tract is owned in fee by Lonnie Gainer
Address Joker, W. Va.
Mineral rights are owned by C. S. Despard
015 Juliana St. Address Parkersburg, W. Va.
Drilling commenced October 29, 1913
Drilling completed November 30, 1913
Date shot June 11, 1915 Depth of shot Berea
Open Flow /10ths Water in _____ Inch
/10ths Merc. in _____ Inch
Volume _____ Cu. Ft.
Rock Pressure _____ lbs. _____ hrs.
Oil _____ bbls., 1st 24 hrs.
Fresh water _____ feet _____ feet
Salt water 1828-1885 feet _____ feet

Casing and Tubing	Used in Drilling	Left in Well	Packers
Size			
16			Kind of Packer
13			
10	<u>162 (Pulled)</u>		Size of
8 1/4	<u>1160 (Pulled)</u>		
6 5/8	<u>1988' 6"</u>		Depth set
5 3/16			
3			Perf. top
2			Perf. bottom
Liners Used			Perf. top
Cond. <u>16"</u>			Perf. bottom

CASING CEMENTED _____ SIZE _____ No. FT. _____ Date _____
COAL WAS ENCOUNTERED AT _____ FEET _____ INCHES
_____ FEET _____ INCHES _____ FEET _____ INCHES
_____ FEET _____ INCHES _____ FEET _____ INCHES

Formation	Color	Hard or Soft	Top	Bottom	Oil Gas or Water	Depth Found	Remarks
Red Rock			16	95			
Lime			95	184			
Sand			184	250			
Lime			250	308			
Sand			308	358			
Slate			358	370			
Lime			370	415			
Sand			415	460			
Lime			460	498			
Sand			498	550			
Slate			550	575			
Lime			575	615			
Sand			615	650			
Slate			650	675			
Red Rock			675	690			
Sand			690	710			
Red Rock			710	840			
Lime			840	868			
Red Rock			868	915			
Lime			915	1130			
Big Dunkard Sand			1130	1180			
Slate			1180	1270			
Gas Sand			1270	1500			
Slate			1500	1630			
Sand			1630	1710			
Slate			1710	1730			
Salt Sand			1730	1920			
Slate			1920	1928			
Little Lime			1928	1954			
Pencil Cave			1954	1967			
Big Lime			1967	2057			
Big Injun Sand			2057	2087			
Slate & Shells			2087	2451			
Berea Sand			2451	2479			
Slate			2479	2483			
Total Depth				2483			

Water 1828-1885
Oil & Gas ~~2451~~-2470-2479

Formation	Color	Hard or Soft	Top	Bottom	Oil, Gas or Water	Depth Found	Remarks

Date August 21, 1939

SOUTH PENN OIL COMPANY

APPROVED _____, Owner

By Elton E. Young Land Agent
 (Title)