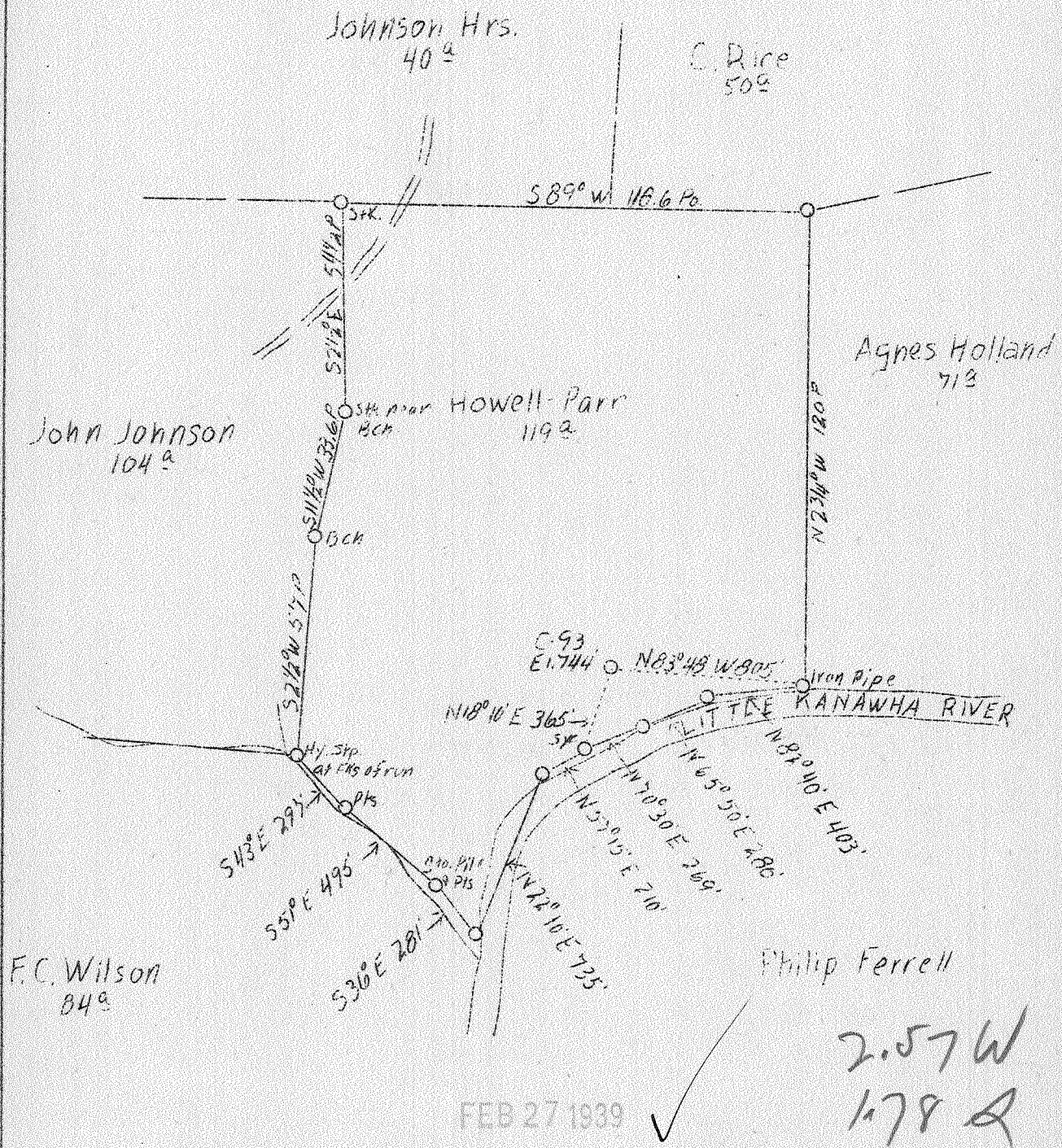


PM

LATITUDE 38°55'

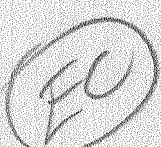
LONGITUDE 81°00'



HBD.

F.B. 668 P37-38 S38W25 5h.96

Company	Hope Const. & Ref. Co.
Address	Clarksburg, W. Va.
Farm	Howell-Parr
Acres	119
Lease No.	19950 - 26845
Well (Farm) No.	One
Serial No.	C-93
Elevation (SL)	744
Quadrangle	Arnoldsburg
County	Calhoun
District	Sherman
Engineer	W. M. Bowers
Eng. Reg. No.	900
Date	Feb. 22, 1939
Scale	1" - 40 poles



STATE OF WEST VIRGINIA
 Department of Mines
 OIL & GAS DIVISION
 Charleston

WELL LOCATION MAP

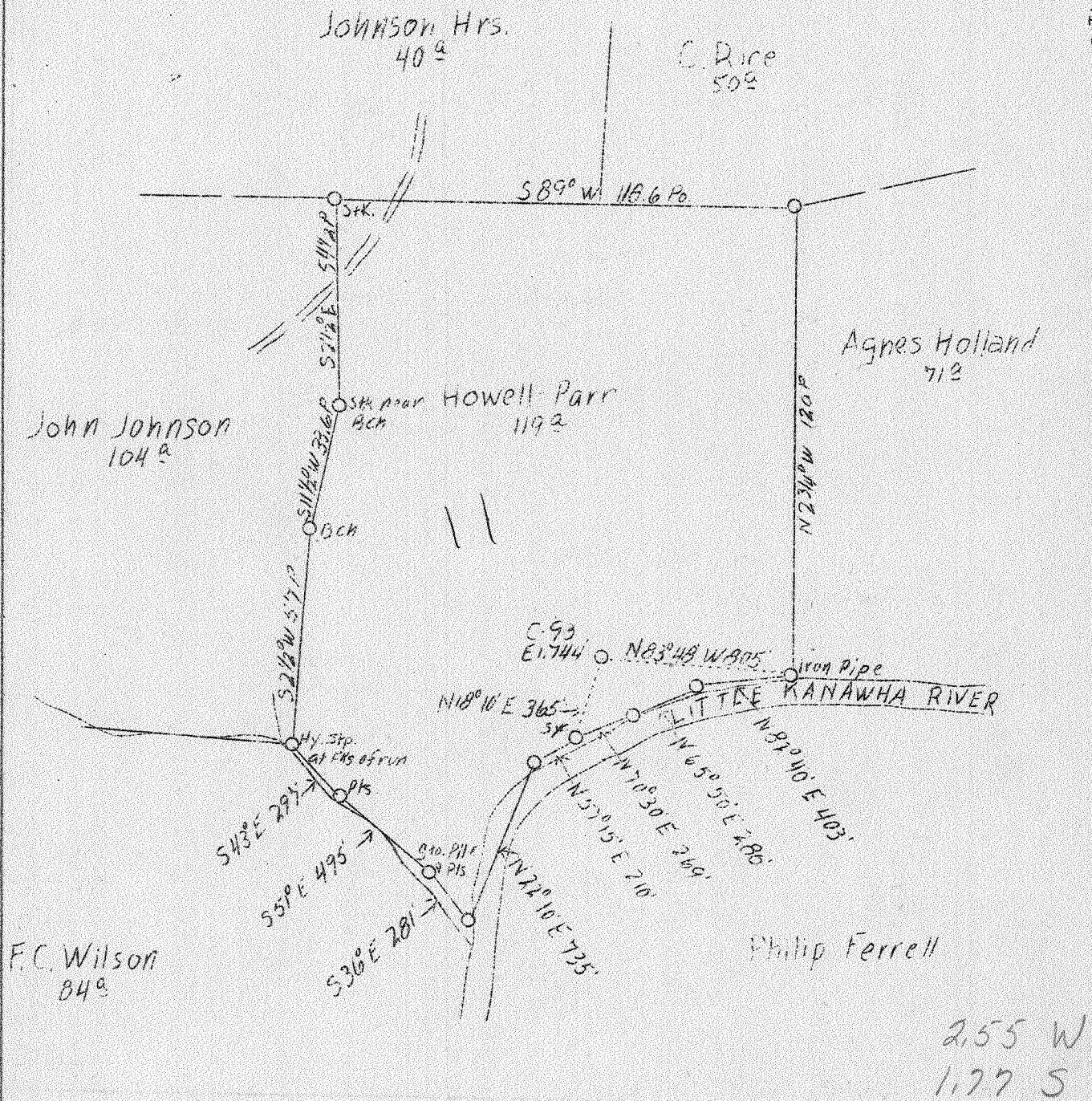
File No. Cal-99 A

x Denotes location of well on U. S. Topographic Maps, scale 1 to 62,500, latitude and longitude lines being represented by border lines as shown.

- Denotes one inch spaces on border line of original tracing.

LATITUDE 38°55'

LONGITUDE 81°00'



HBD.

FB. 668 P37-38 S38W25 5h.96

Company	Hope Const. & Ref. Co.
Address	Clarksburg, W. Va.
Farm	Howell-Parr
Acres	119
Lease No.	19950 - 26845
Well (Farm) No.	One
Serial No.	C-93
Elevation (SL)	744
Quadrangle	Arnoldsburg
County	Calhoun
District	Sherman
Engineer	W. M. Bowers
Eng. Reg. No.	900
Date	Feb. 22, 1939
Scale	1" - 40 poles

STATE OF WEST VIRGINIA
 Department of Mines
 OIL & GAS DIVISION
 Charleston

WELL LOCATION MAP

File No. Cal-99A

x Denotes location of well on U. S. Topographic Maps, scale 1 to 62,500, latitude and longitude lines being represented by border lines as shown.

- Denotes one inch spaces on border line of original tracing.

CAL-99-A

Sherman District, Calhoun County, W. Va.
 By Hope Construction & Refining Co., Clarksburg, W. Va.
 On 119 acres, on Little Kanawha River.
 Elevation, 744' L.

X

Surface owned by Hunter Bennett, Weston, W. Va.
 Drilling commenced July 20, 1919; completed, ~~Sept. 21, 1919.~~
 Shot Nov. 21, 1919, at 1885-1890'.
 No fresh water recorded; salt water at 1703'.
 10" casing, 150' (pulled); 8 $\frac{1}{4}$ " , 420' (pulled); 6 $\frac{5}{8}$ " , 909';
 5 $\frac{3}{8}$ " , 1796'; 2" tubing, 1914'.
 Casing not cemented.
 No coal was encountered.
 Oil well. Abandonment reported to Dept. of Mines Feb. 21, 1939.
 Record to RCT from Mrs. Griffith March 6, 1939.

	Top.	Bottom.
Big Dunkard Sand	865	- 920
Gas Sand	980	- 1110
First Salt Sand	1133	- 1180
Second Salt Sand	1240	- 1290
Third Salt Sand	1404	- 1610
Maxton Sand (water, 1703')	1678	- 1715
Little Lime	1725	- 1757
Big Lime	1764	- 1830?
Big Injun Sand (oil, 1885-1890')	1818?	- 1902
Total depth		1914