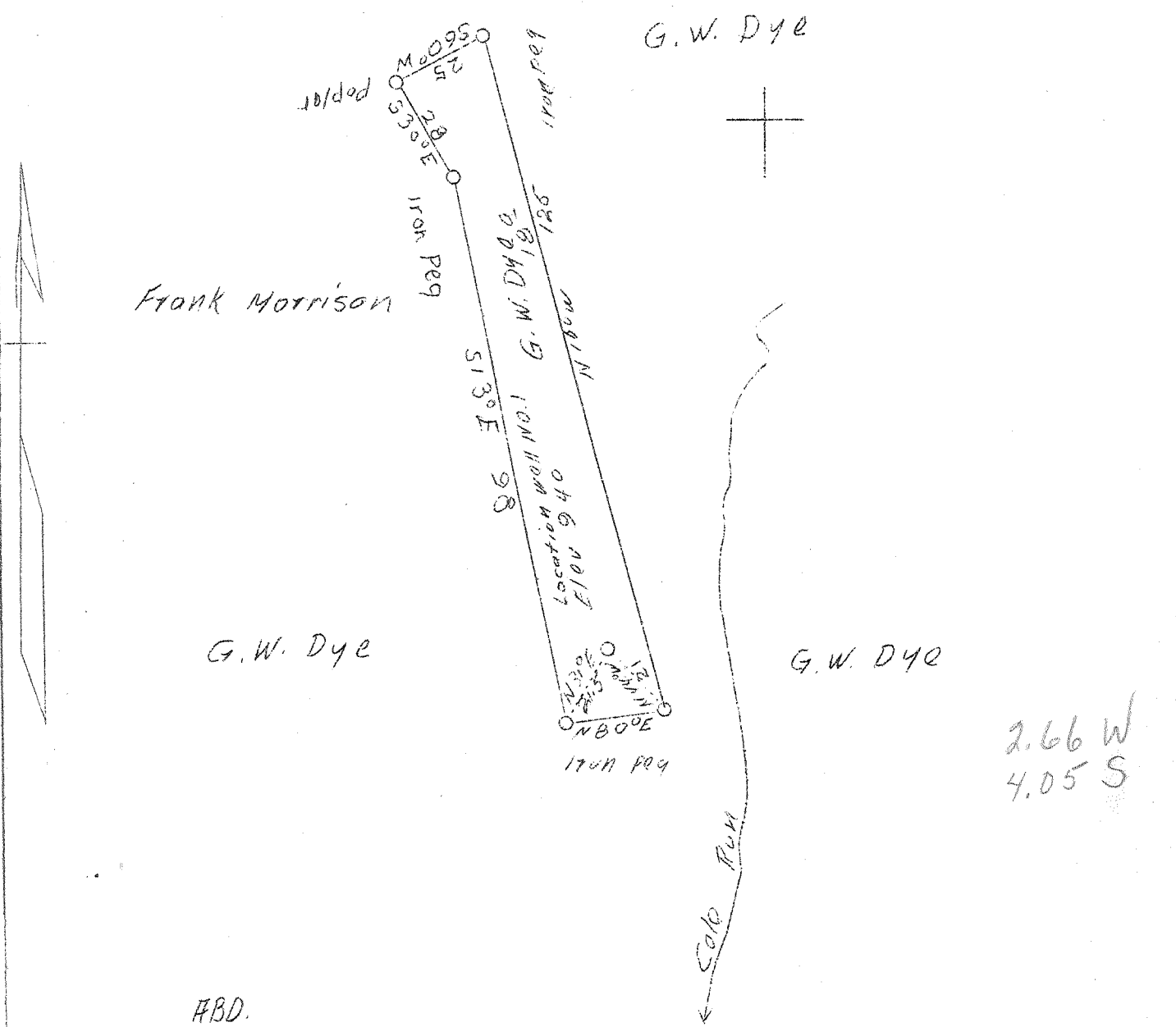


LATITUDE 39° 05'

LONGITUDE 81° 05'



ABD.

Company	Richter Oil Co.
Address	Brohard, W. Va.
Farm	G. W. Dye
Tract	One
Acres	18
Well (Farm) No.	One
Elevation (SP)	940
Quadrangle	Harrisville 5.C
County	Calhoun
District	Sheridan
Engineer	Logan McDonald
Eng. Reg. No.	610
Date	Sept. 15, 1938
Scale	1" - 40 rods

STATE OF WEST VIRGINIA
 Department of Mines
 OIL & GAS DIVISION
 Charleston

WELL LOCATION MAP
 File No. Cal-88-A

x Denotes location of well on U. S. Topographic Maps, scale 1 to 62,500, latitude and longitude lines being represented by border lines as shown.

- Denotes one inch spaces on border line of original tracing.

WEST VIRGINIA DEPARTMENT OF MINES
OIL AND GAS DIVISION

220

WELL RECORD

Permit No. CAL-88-A

Oil or Gas Well
(Kind)

Company <u>Richter Oil Company</u>	Casing and Tubing	Used in Drilling	Left in Well	Packers
Address <u>Brohard, W. Va.</u>	Size			
Farm <u>G. W. Dye</u> Acres <u>18</u>	16			Kind of Packer
Location (waters) <u>Cole Fork</u>	13			Size of
Well No. <u>1</u> Elev. <u>940'</u>	10	<u>20'</u>		Depth set
District <u>Sheridan</u> County <u>Calhoun</u>	8 1/4	<u>405'</u>		
The surface of tract is owned in fee by <u>G. W. Dye</u>	6 5/8	<u>960'</u>		
Address <u>Freed, W. Va.</u>	5 3/16		<u>1792'</u>	
Mineral rights are owned by <u>A. G. Taylor</u>	3			Perf. top
Address <u>Furning Springs, W. Va.</u>	2			Perf. bottom
Drilling commenced	Liners Used			Perf. top
Drilling completed				Perf. bottom
Date shot				
Depth of shot				
Open Flow /10ths Water in				
Inch				
/10ths Merc. in				
Inch				
Volume				
Cu. Ft.				
Rock Pressure				
lbs.				
hrs.				
Oil				
bbls., 1st 24 hrs.				
Fresh water				
feet				
feet				
Salt water				
feet				
feet				

CASING CEMENTED.....SIZE.....No. FT.....Date

COAL WAS ENCOUNTERED AT..... FEET..... INCHES

..... FEET..... INCHES..... FEET..... INCHES

..... FEET..... INCHES..... FEET..... INCHES

Formation	Color	Hard or Soft	Top	Bottom	Oil Gas or Water	Depth Found	Remarks
Big Dunkard			960	972			
Long Streak			1240	1330			
Gas Sand			1400	1470			
Salt Sand			1790				
Gas Pay			1674-83'		Gas 1674-83'		
Top Line			1872				
Injun Sand			1880				
Gas Pay			1885-93		Gas 1885-93'		
Shotat			1833'				
Shot at			1819', down 5'				
Shot at			1817' - 1823'				
Shot in Salt Sand							
Total Depth						1902'	