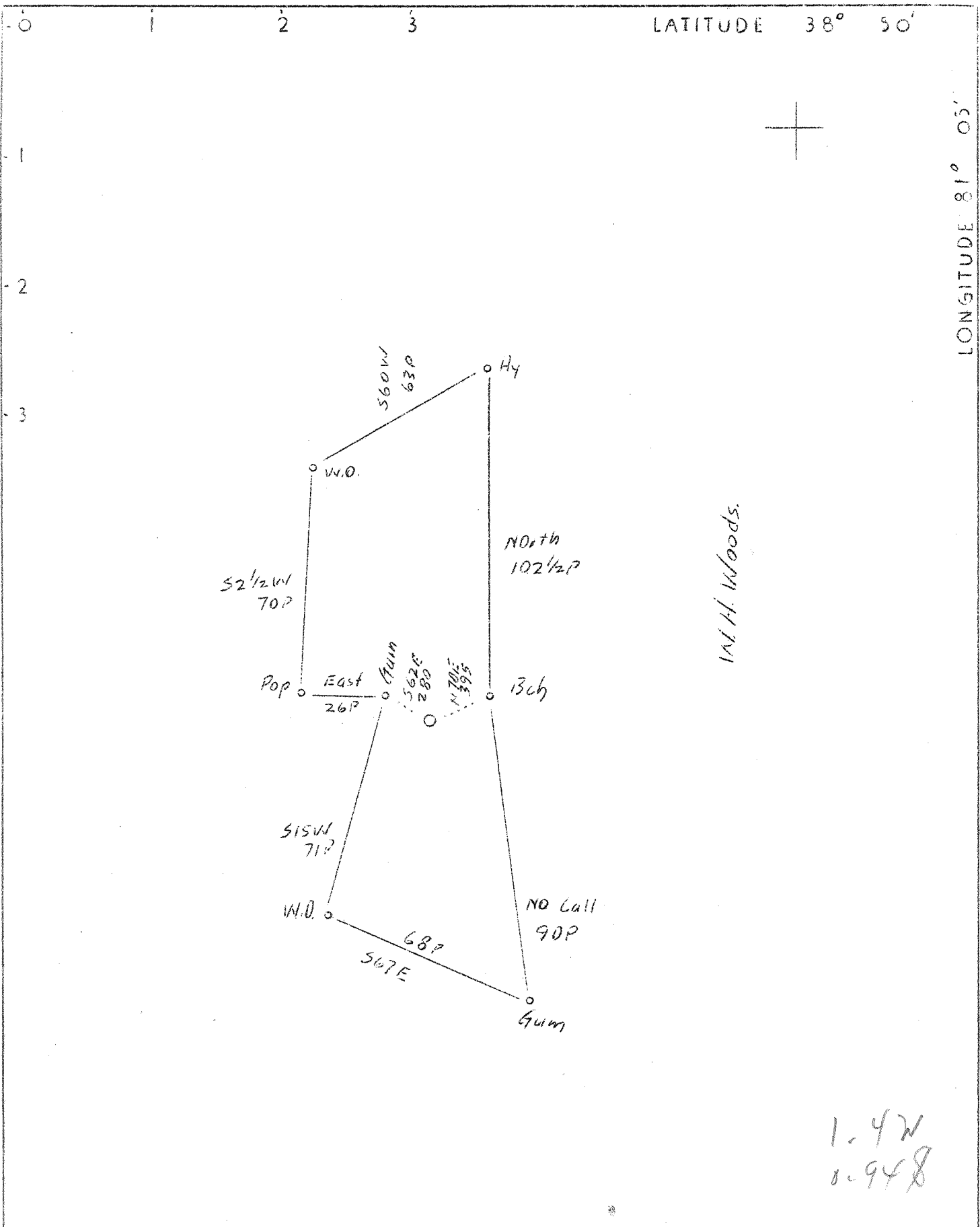


m



1.4W  
0.948

Abd.

"P" indicates original permit number.

Company	Daubenspec & Mason
Address	Cairo, W.Va.
Farm	Mary Allen
Tract	Acres 52 Lease No.
Well (Farm) No.	1 Serial No.
Elevation (Spirit Level)	809'
Quadrangle	Arnoldsburg <i>Ab.</i>
County	Calhoun District <i>Sherman Lee</i>
Engineer	Bruce Ferrell, Jr. <i>Lee</i>
Engineer's Registration No.	
File No.	Drawing No.
Date	Oct. 25, 1937 Scale 1"-40 P.

STATE OF WEST VIRGINIA  
 Department of Mines  
 OIL AND GAS DIVISION  
 CHARLESTON

WELL LOCATION MAP

File No. CAL-77A *(A)*

+ Denotes location of well on United States Topographic Maps, scale 1 to 62,500, latitude and longitude lines being represented by border lines as shown.

- Denotes one inch spaces on border line of original tracing.