

Plat of the proposed location of Well No. 1, of the D.R. Fowler, of Mt Zion, West Virginia, on the Lawson Stump Farm, consisting of 3 acres, located in Center district, Calhoun county, West Virginia.



who hold

Co. - 99 B

6/7/34

ENGINEER'S CERTIFICATION

I, the undersigned, hereby certify that this map is correct and shows all the information to the best of my knowledge and belief, required by the Oil and Gas Section of the Mining Laws of West Virginia.

Logan McCracken
Engineer

Acknowledged before me, a Notary Public, this 2nd day of June, 1934.

Edna Elliott
Notary Public

By Commission Expires June 1, 1935

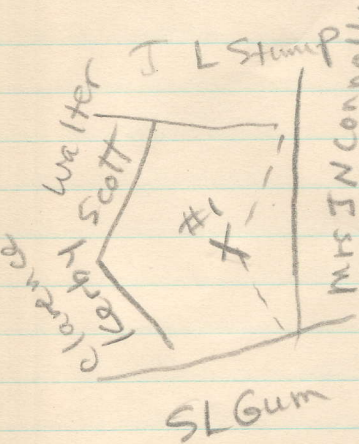
M

C#L-49-A

NO LOCATION FOUND

Center District, Calhoun County, W. Va.
D. R. Fowler, Mt. Zion, W. Va.
On 3/4 acres, surface and mineral rights owned by Lawson Stump,
Mt. Zion, W. Va.

Drilled in 1930.
Elevation, 1120' L.
13" conductor, 8'; 10" casing, 175'; 8 1/2", 1070'; 5-3/16", 2065'.
Steel shoe, 8 1/2 x 14, set at 1070'. Well was shot at 2060-2080'.
Bottom hole packer, 5-3/16 x 8 1/2 x 5-3/16, set at 2065'.
No coal encountered. Fresh water, 140-145 and 945-950'.
Completion? reported to Dept. of Mines, May 26, 1934.
Dry hole. Salt water at 1914-1920 and 1994-2028'.



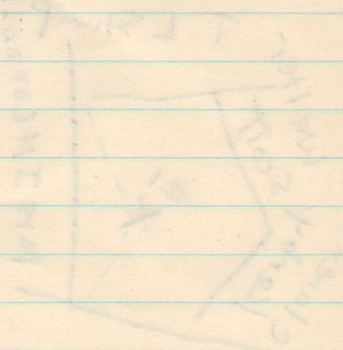
	Top.	Bottom.
Soil, yellow, soft, coarse	0	8
Sand, yellow, soft, coarse (fresh water)	8	145
Lime, gray, hard, fine	145	180
Red rock, soft, fine	180	220
Shells, gray, soft, coarse	220	270
Sand, gray, soft, coarse	270	320
Red rock, soft, fine	320	350
Lime, gray, hard, fine	350	400
Shells, gray, soft, coarse	400	430
Sand, gray, soft, coarse	430	450
Lime, gray, hard, fine	450	470
Red rock, soft, fine	470	490
Lime, gray, hard, fine	490	525
Lime shells, gray, soft, coarse	525	630
Red rock, soft, fine	630	638
Lime shells, gray, soft, coarse	638	670
Red rock, soft, fine	670	715
Sand, gray, soft, coarse	715	750
Red rock, soft, fine	750	780
Lime, gray, hard, fine	780	796
Red rock, soft, fine	796	845
Lime, gray, hard, fine	845	853
Red rock, soft, fine	853	860
Lime, gray, hard, fine	860	890
Little Dunkard Sand, gray, soft, coarse	890	925
Red rock, soft, fine	925	940
Sand, gray, soft, coarse (slight water)	940	960
Lime shells, gray, soft, coarse	960	1038
Slate, black, soft, fine	1038	1051
Slate, gray, soft, fine	1051	1062
Sandy lime, gray, soft, coarse	1062	1072
Slate, gray, soft, fine	1072	1150
Sand, gray, soft, coarse	1150	1165
Slate, gray, soft, fine	1165	1185
Gas Sand, white, hard, fine	1185	1222
Slate shell, gray, soft, fine	1222	1278
1st Salt Sand, gray, soft, coarse	1278	1445
Slate, gray, soft, fine	1445	1690
2nd Salt Sand, gray, hard, fine	1690	1760
Slate, gray, soft, fine	1760	1815
3rd Salt Sand, gray, hard, fine	1815	1863
Slate, gray, soft, fine	1863	1865
Maxton Sand, gray, hard, fine (hole full of water)	1865	2028

(OVER)

LAWSON STUMP NO. 1 WELL (Continued).

A.P.P. - 1/4

	Top.	Bottom.
Little Lime, gray, hard, fine	2028	2049
Pencil Cave	2049	2061
Big Lime, gray, hard, fine (showing gas, 2068')	2061	2131
Big Injun Sand, gray, hard, fine	2131	2218
Slate, black, soft, fine, to bottom	2218	



[Faint, mirrored text from the reverse side of the page, likely bleed-through from another page. The text is mostly illegible but appears to be a continuation of a log or list.]