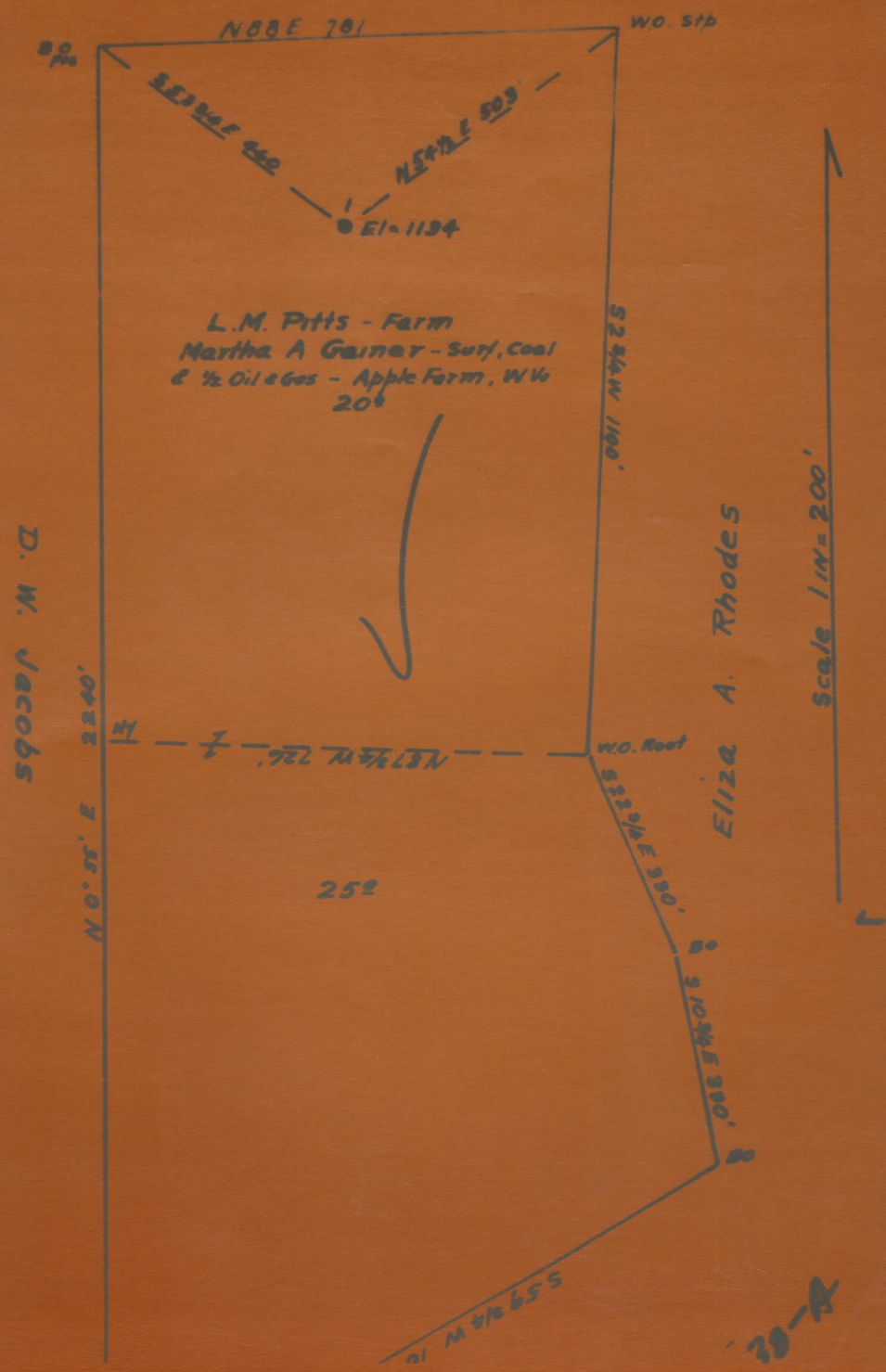


SOUTH PENN OIL COMPANY
 PROPOSED ABANDONMENT
 Well No. 1, L. M. Pitts Farm, Sherman District, Calhoun County, W. Va.
 D. W. Wilson



30-A

Sherman District, Calhoun County, W. Va. **CAL-38-A**
 South Penn Oil Co., P. O. Drawer 1255, Pittsburgh, Pa.
 On 45 acres, surface and mineral rights owned by Martha A. Gainer,
 Millstone, W. Va.

Elevation, 1134' L.

14' conductor; 10" casing, 441' 8"; 8 $\frac{1}{2}$ ", 1120'; 6-5/8", 2127'.

Abandonment reported to Dept. of Mines Dec. 14, 1932.

Well was shot at 2107', in Maxton Sand.

This well was drilled 384 feet below Injun Sand. Well was then
 filled up to a depth of 2017' and shot.

Salt water at 2005 and 2185'.

	Top.	Bottom.
Conductor	0	14
Sand	14	114
Red rock	114	130
Sand	130	200?
Slate	220?	224
Sand	224	295
Red rock	295	320
Sand	320	425
Red rock (10" casing, 441')	425	450
Sand	450	470
Slate	470	495
Red rock	495	518
Slate	518	550
Limestone	550	625
Slate	625	705
Red rock	705	750
Limestone	750	850
Slate	850	910
Red rock	910	945
Slate	945	1105
Big Dunkard Sand (8 $\frac{1}{2}$ " casing, 1110')	1105	1205
Slate	1205	1250
Gas Sand	1250	1400
Slate	1400	1420
Sand	1420	1480
Slate	1480	1500
Lime	1500	1510
Slate	1510	1610
Lime and shells	1610	1700
Slate	1700	1790
1st Salt Sand	1790	1830
Slate	1830	1835
2nd Salt Sand	1835	1895
Slate	1895	1900
Sand	1900	1950
Lime	1950	1970
Maxton Sand (oil, gas and water, 2005- 2015')	1970	2044
Slate	2044	2050
Lime	2050	2081
Sand	2081	2093
Slate	2093	2098
Big Lime (6-5/8" casing, 2107')	2098	2185
Keener Sand (water, 2185')	2185	2210
Big Injun Sand (gas, 2224') show	2210	2256
Lime, slate, and shells, to bottom	2256	2640
Hole filled up to		2017