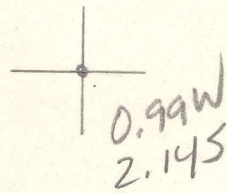


LATITUDE 38° 55' 00"

LONGITUDE 100° 01' 18"



7'5 OGIS topo location

7.5' loc _____ 15' loc _____
 _____ (calc.) _____

Company _____

Farm _____

Quad Annamerial 7 1/2 1

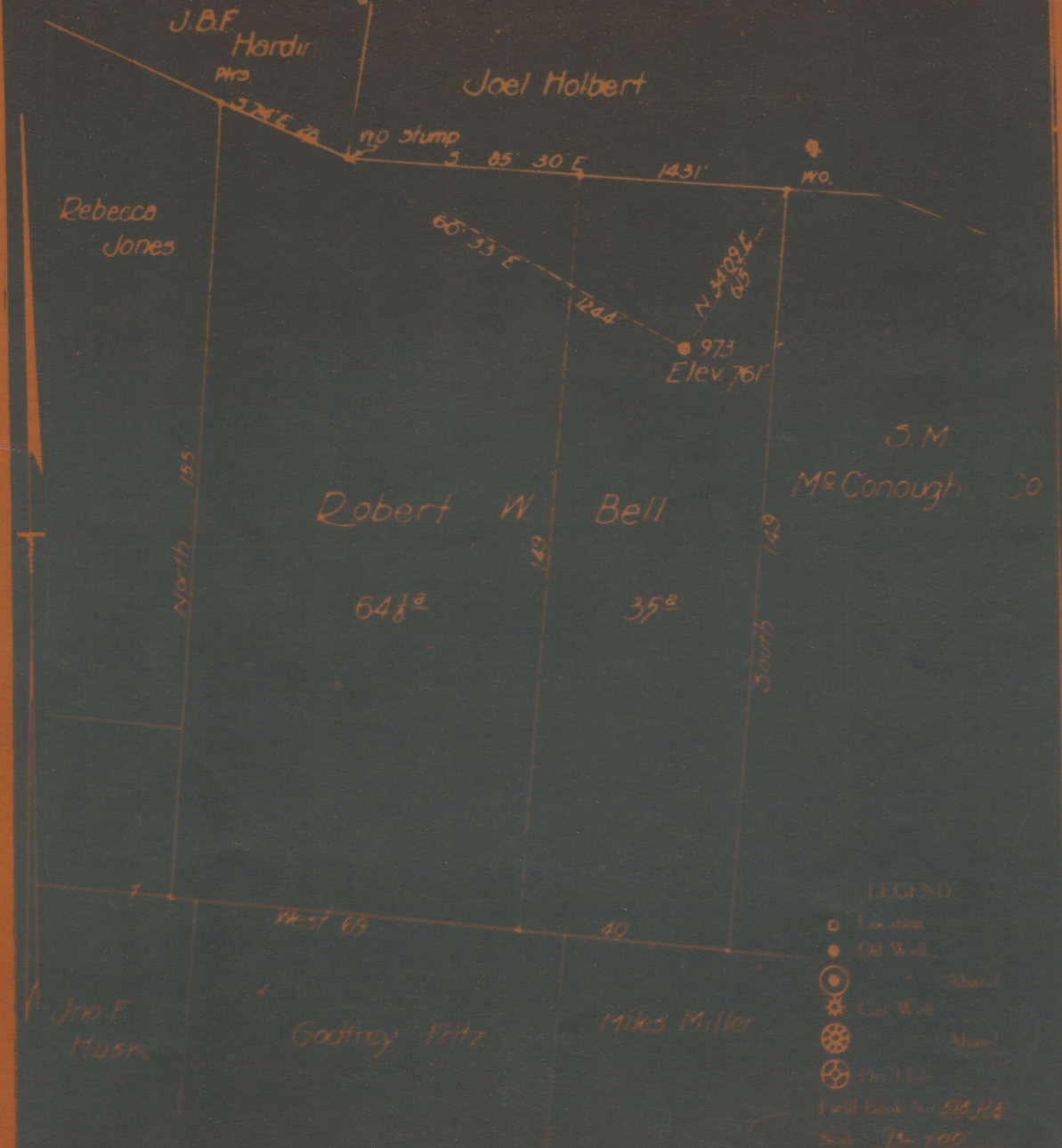
County Calhoun

District Lee

WELL LOCATION MAP

File No. 013-23A

WELL NO 973
 L. P. BICKLE, ASSIGNEE OF HOPE CONSTRUCTION & REFINING Petersburg, W. Va. on the
 JOHN BELL Farm consisting of 100 Acres
 LEE CALHOUN County W. Va.



ENGINEER'S CERTIFICATE

BELL, JOHN, NO. 973.

Cal-23-A.

By L. P. Bickel.

NO LOCATION

Lee Dist.

plugged -
see microfilm
Dec 1931