

MORGAN LEASE 401.75 ACRES ±

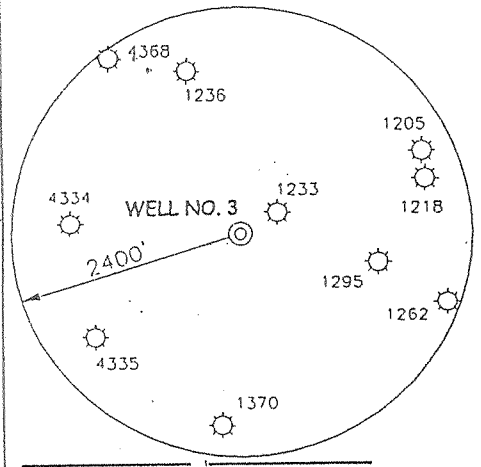
WELL NO. 3

WELL NO. 3
STATE PLANE
COORDINATES

(N)660,352
(E)1,963,724

LINE	BEARING	DISTANCE
L1	S 35°00' W	173.25'
L2	N 76°30' W	610.50'
L3	S 57°00' W	115.50'
L4	S 12°30' W	495.00'
L5	S 74°00' W	528.00'
L6	N 52°00' W	363.00'
L7	N 17°00' W	495.00'
L8	N 01°30' W	396.00'
L9	N 15°30' E	363.00'
L10	S 82°00' W	445.50'

NORTH

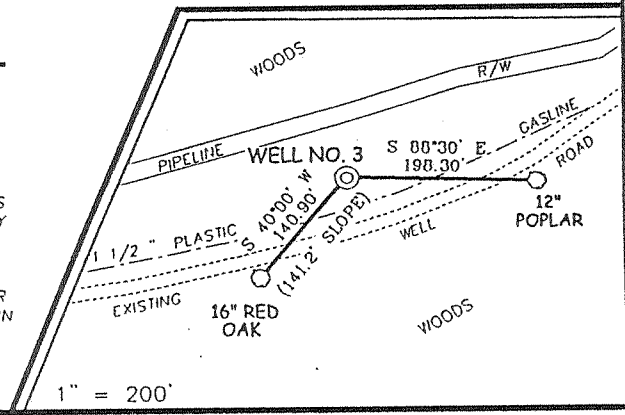


TO ARNOLDSBURG

NOTES ON SURVEY

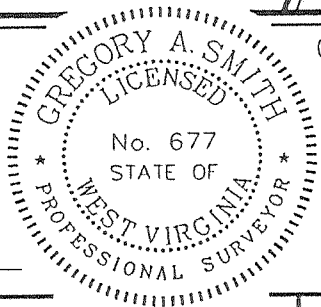
1. TIES TO WELLS AND CORNERS ARE BASED ON STATE PLANE GRID NORTH WV SOUTH ZONE NAD '27.
2. TIES TO REFERENCES ARE BASED ON MAGNETIC NORTH 7/2/01.
3. LEASE BOUNDARY SHOWN HEREON TAKEN FROM A DEED DATED 11/10/73 AS RECORDED IN THE OFFICE OF THE COUNTY CLERK OF CALHOUN COUNTY IN DEED BOOK 122 ON PAGE 71.
4. SURFACE OWNER AND ADJOINER INFORMATION TAKEN FROM THE ASSESSOR AND COUNTY CLERK RECORDS OF CALHOUN COUNTY IN JUNE, 2000.
5. WELL LAT./LONG. ESTABLISHED BY DGPS(SUBMETER MAPPING GRADE).

REFERENCES



I THE UNDERSIGNED, HEREBY CERTIFY THAT THIS PLAN IS CORRECT TO THE BEST OF MY KNOWLEDGE AND BELIEF AND SHOWS ALL THE INFORMATION REQUIRED BY LAW AND THE REGULATIONS ISSUED AND PRESCRIBED BY THE DIVISION OF ENVIRONMENTAL PROTECTION.

P.S. 677 *Gregory A. Smith*



(+) DENOTES LOCATION OF WELL ON UNITED STATES TOPOGRAPHIC MAPS.

DATE JULY 26, 2001
 OPERATORS WELL NO. 3
 API WELL NO. 47-13 COUNTY 04423 PERMIT

MINIMUM DEGREE OF ACCURACY 1 / 200 FILE NO. 3047P3(109-21)
 PROVEN SOURCE OF ELEVATION BENCH MARK ELEVATION 793' SCALE 1" = 1000'

STATE OF WEST VIRGINIA
 DIVISION OF ENVIRONMENTAL PROTECTION
 OFFICE OF OIL AND GAS

WELL TYPE: OIL GAS LIQUID INJECTION WASTE DISPOSAL IF "GAS" PRODUCTION STORAGE DEEP SHALLOW

LOCATION: ELEVATION 1124' WATERSHED RIGHT FORK OF DANIELS RUN
 DISTRICT LEE COUNTY CALHOUN QUADRANGLE ARNOLDSBURG 7.5'

SURFACE OWNER THOMAS G. McLAUGHLIN ACREAGE 267.6±
 ROYALTY OWNER E.B. MORGAN LEASE ACREAGE 262.25 of 401.75±

PROPOSED WORK: DRILL CONVERT DRILL DEEPER REDRILL FRACTURE OR STIMULATE PLUG OFF OLD FORMATION PERFORATE NEW FORMATION PLUG AND ABANDON CLEAN OUT AND REPLUG OTHER

PHYSICAL CHANGE IN WELL (SPECIFY) _____ TARGET FORMATION DEVONIAN SHALE
 ESTIMATED DEPTH 5900'

WELL OPERATOR MIKE ROSS, INC. DBA ROSS & WILKINSON GAS CO. DESIGNATED AGENT MIKE ROSS
 ADDRESS BOX 219 COALTON, WV 26257 ADDRESS BOX 219 COALTON, WV 26257

6-6 Grantsville - Arnoldsburg (171)

AUG 24 2001

CAL COUNTY NAME PERMIT 4423

State of West Virginia
Division of Environmental Protection
Section of Oil and Gas

Handwritten initials

Well Operator's Report of Well Work

Farm name: E. B. MORGAN #3 Operator Well No.: #3

LOCATION: Elevation: 1124 Quadrangle: ARNOLDSBURG 7.5

District: Lee County: Calhoun
Latitude: 38' Feet South of 50 Deg. 00 Min. Sec.
Longitude 81' Feet West of 07 Deg. 30 Min. Sec.

Company: Mike Ross, Inc.

	Casing & Tubing	Used in drilling	Left in well	Cement fill up Cu. Ft.
Address: PO Box 219 Coalton, WV 26257	7"	2199	2199	350 sks
Agent: Mike Ross	8 5/8"			
Inspector: Ed Gainer	9"	394	394	250 sks
Date Permit Issued: 8/24/01				
Date Well Work Commenced: 8/4/02	4 1/2"		5311	325 sks
Date Well Work Completed: 8/9/02				
Verbal Plugging:				
Date Permission granted on:				
Rotary x Cable Rig				
Total Depth (feet): 5500				
Fresh Water Depth (ft.): 1/2" @ 130' and 1034, 1/2" @ 1405'				
Salt Water Depth (ft.):				
Is coal being mined in area (N/Y)? N				
Coal Depths (ft.):				

OPEN FLOW DATA

Producing formation Injun & Benson Pay zone depth (ft) 2190-5210

Gas: Initial open flow 40 MCF/d Oil: Initial open flow --- Bbl/d

Final open flow 210 MCF/d Final open flow --- Bbl/d

Time of open flow between initial and final tests 4 Hours

Static rock Pressure 490 psig (surface pressure) after 72 Hours

Second producing formation _____ Pay zone depth (ft) _____

Gas: Initial open flow _____ MCF/d Oil: Initial open flow _____ Bbl/d

Final open flow _____ MCF/d Final open flow _____ Bbl/d

Time of open flow between initial and final tests _____ Hours

Static rock Pressure _____ psig (surface pressure) after _____ Hours

NOTE: ON BACK OF THIS FORM PUT THE FOLLOWING: 1). DETAILS OF PERFORATED INTERVALS, FRACTURING OR STIMULATING, PHYSICAL CHANGE, ETC. 2). THE WELL LOG WHICH IS A SYSTEMATIC DETAILED GEOLOGICAL RECORD OF ALL FORMATIONS INCLUDING COAL ENCOUNTERED BY THE WELLBORE.

Signed: Mike Ross
By: Mike Ross
Date: August 21, 2002

NOV 26 2003

RECEIVED
Office of Oil & Gas
Office of Chief
NOV 14 2003
WV Department of
Environmental Protection

CAL 11423

Fractured August 14, 2002

1st Stage - Perfs @ 5193-4209, 750 Gal Acid, 500 BBLs Foam, 18 Holes
100 sks 80/100 Sand, 305 sks 20/40 Sand, 214,000 SCF N²

2nd Stage - Perfs @ 2951-3509, 750 Gals Acid, 470 BBLs Foam, 7 Holes
80 sks 80/100 Sand, 260 sks 20/40 Sand, 186,000 SCF N²

Squeeze 4½ @ 2400'

Frac August 25, 2003

3rd Stage - Perfs @ 2228-2276, 12 Holes, 1000 Gal Acid, 300 BBLs
333 20/40 Sand.

Fill	0	3	
Sand & Shale	3	145	
Red Rock & Sand	145	405	
Sand & Shale	405	1210	
Sand	1210	1497	
Sand & Shale	1497	2110	
Little Lime	2110	2127	
Big Lime	2127	2190	
Injun Sand	2190	2200	Show of gas
Sand & Shale	2200	5200	
Benson	5200	5210	Show of gas
Sand & Shale	5210	5500	TD