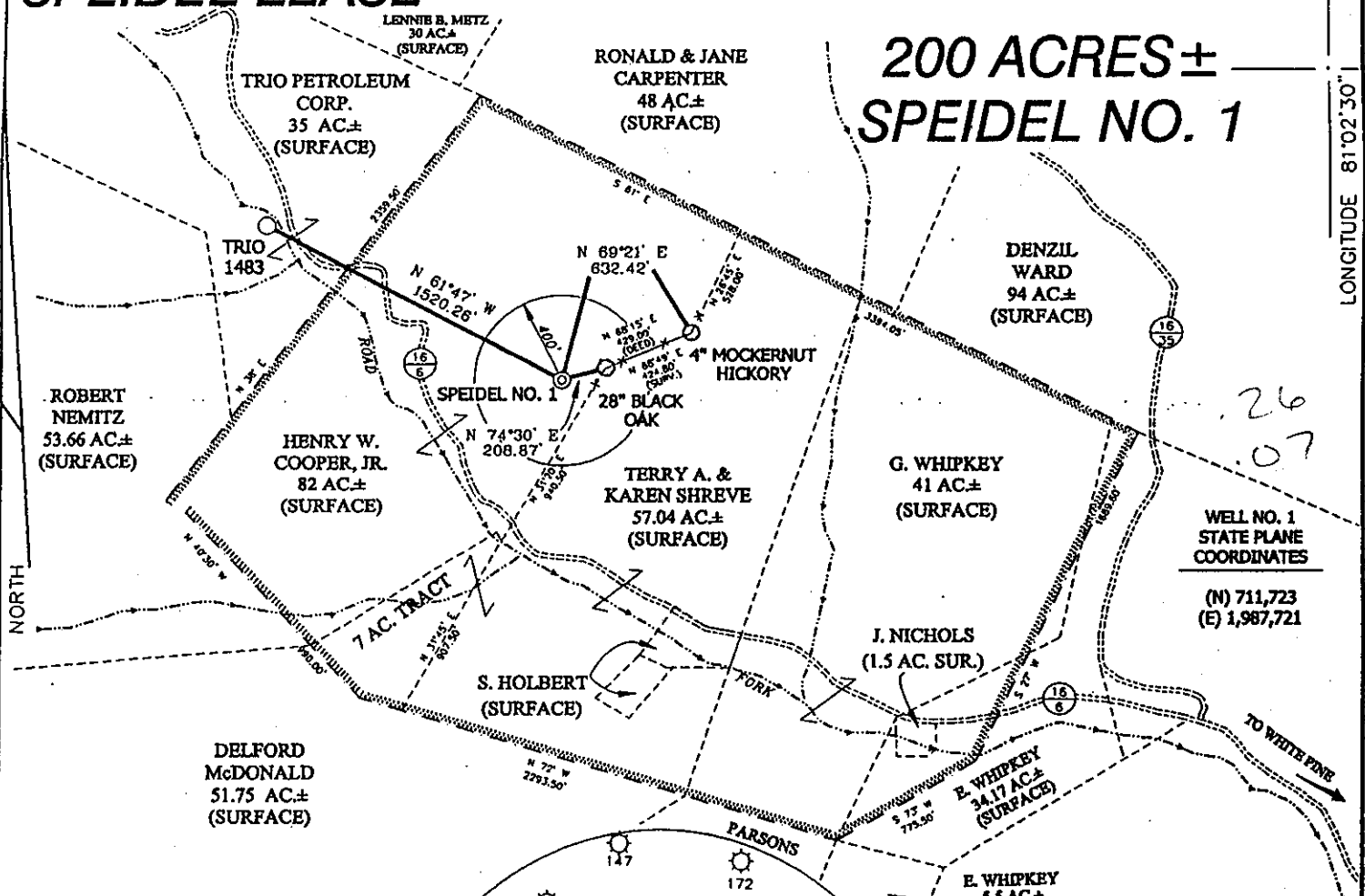


SPEIDEL LEASE

200 ACRES± SPEIDEL NO. 1



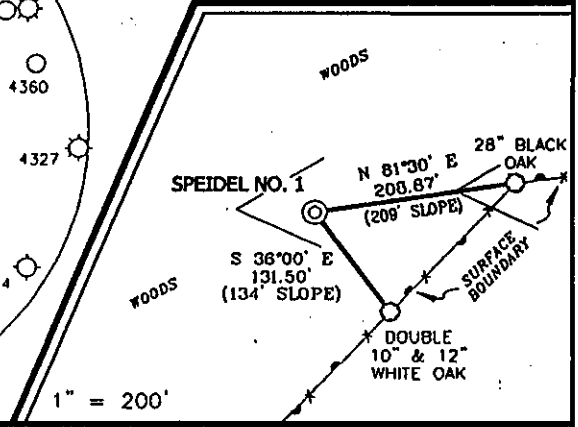
WELL NO. 1
STATE PLANE
COORDINATES
(N) 711,723
(E) 1,987,721

NOTES ON SURVEY

1. TIES TO WELLS AND CORNERS ARE BASED ON STATE PLANE GRID NORTH WV SOUTH ZONE NAD '27.
2. TIES TO REFERENCES ARE BASED ON MAGNETIC NORTH 03/13/01.
3. LEASE BOUNDARY SHOWN HEREON TAKEN FROM A PLAT DATED 01/12/01 AS PREPARED BY J. MICHAEL EVANS FOR DOMINION EXPLORATION & PRODUCTION, INC.
4. SURFACE OWNER AND ADJOINER INFORMATION TAKEN FROM THE ASSESSOR AND COUNTY CLERK RECORDS OF CALHOUN COUNTY IN JANUARY, 2001.
5. WELL LAT./LONG. ESTABLISHED BY DGPS(SUBMETER MAPPING GRADE).

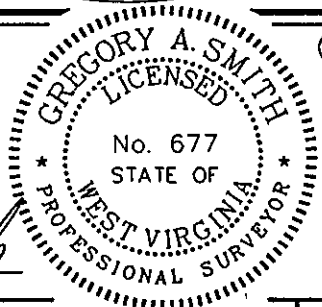


REFERENCES



I THE UNDERSIGNED, HEREBY CERTIFY THAT THIS PLAT IS CORRECT TO THE BEST OF MY KNOWLEDGE AND BELIEF AND SHOWS ALL THE INFORMATION REQUIRED BY LAW AND THE REGULATIONS ISSUED AND PRESCRIBED BY THE DEPARTMENT OF ENERGY.

P.S. 677 Gregory A. Smith



(+) DENOTES LOCATION OF WELL ON UNITED STATES TOPOGRAPHIC MAPS.
DATE MARCH 14 2001
OPERATORS WELL NO. SPEIDEL NO. 1
API WELL NO. 47-13-4394
STATE COUNTY PERMIT

MINIMUM DEGREE OF ACCURACY 1 / 2500 FILE NO. 4680P1 (86-73)
PROVEN SOURCE OF ELEVATION JUNCTION OF ROADS ELEVATION 772' SCALE 1" = 800'

STATE OF WEST VIRGINIA
DIVISION OF ENVIRONMENTAL PROTECTION
OFFICE OF OIL AND GAS

WELL TYPE : OIL GAS LIQUID INJECTION WASTE DISPOSAL IF "GAS" PRODUCTION STORAGE DEEP SHALLOW

LOCATION : ELEVATION 1118' WATERSHED ROAD FORK
DISTRICT SHERMAN COUNTY CALHOUN QUADRANGLE GRANTSVILLE 7.5'

SURFACE OWNER HENRY W. COOPER, JR. ACREAGE 82
ROYALTY OWNER JOE SPEIDEL III LEASE ACREAGE 200

PROPOSED WORK : LEASE NO. _____
DRILL CONVERT DRILL DEEPER REDRILL FRACTURE OR STIMULATE PLUG OFF OLD FORMATION PERFORATE NEW FORMATION PLUG AND ABANDON CLEAN OUT AND REPLUG OTHER
PHYSICAL CHANGE IN WELL (SPECIFY) _____ TARGET FORMATION BASEMENT
ESTIMATED DEPTH 21,000

WELL OPERATOR CABOT OIL AND GAS CORPORATION DESIGNATED AGENT JOHN ABSHIRE
ADDRESS 900 LEE ST. E SUITE 1500, CHARLESTON, WV 25301 ADDRESS 900 LEE ST. E SUITE 1500, CHARLESTON, WV 25301

DEEP WELL 1-0-0

CAL
4394
PERMIT

MAY 4 2001

DEEP
State of West Virginia

Date: May 13, 2002
API # 47-013-04394

1. Bre T 1-3-03

Division of Environmental Protection
Section of Oil and Gas
Well Operator's Report of Well Work

Revised *MEP*

Farm name: Henry Cooper

Operator Well No.: Speidel #1

LOCATION: Elevation: 1118' Quadrangle: Grantsville
District: Sherman County: Calhoun
Latitude: 1380' feet South of 38° DEG. 57' MIN. 0" SEC.
Longitude: 410' feet West of 81° DEG. 2' MIN. 30" SEC.

Company: Cabot Oil & Gas Corporation
900 Lee Street East, Suite 500
Charleston, WV 25301

Agent: Thomas S. Liberatore
Inspector: Ed Gainer
Permit Issued: 3/22/01
Well Work Commenced: 3/29/01
Well Work Completed: 2/11/02
Verbal Plugging
Permission granted on: _____
Rotary X Cable _____
Total Depth (feet) 12,204'
Fresh Water Depths (ft) 745'
Salt Water Depths (ft) _____
Is coal being mined in area (Y / N)? N
Coal Depths (ft) _____

Casing & Tubing Size	Used in Drilling	Left in Well	Cement Fill up Cu. Ft.
30"	37'	37'	1 cu yd
20"	305'	305'	630 sks
13 3/8"	2,232'	2,232'	1270 sks
9-5/8"	7,368'	7,368'	780 sks
DV tool on 9-5/8" @ 3524'-3521'			370 sks
7"	10,372'	10,372'	815 sks
2 7/8"		11,715'	

RECEIVED
Office of Oil & Gas
Permitting
NOV 21 2002
WV Department of
Environmental Protection

OPEN FLOW DATA

Producing formation N.A Pay zone depth (ft) N/A
Gas: Initial open flow N/A MCF/d Oil: Initial open flow N/A Bbl/d
Final open flow N/A MCF/d Final open flow N/A Bbl/d
Time of open flow between initial and final tests N/A Hours
Static rock pressure N/A psig (surface pressure after N/A Hours

Second producing formation _____ Pay zone depth (ft) _____
Gas: Initial open flow _____ MCF/d Oil: Initial open flow _____ Bbl/d
Final open flow _____ MCF/d Final open flow _____ Bbl/d
Time of open flow between initial and final tests _____ Hours
Static rock pressure _____ psig (surface pressure after _____ Hours

NOTE: ON BACK OF THIS FORM PUT THE FOLLOWING: 1). DETAILS OF PERFORATED INTERVALS, FRACTURING OR STIMULATING, PHYSICAL CHANGE, ETC. 2). THE WELL LOG WHICH IS A SYSTEMATIC DETAILED GEOLOGICAL RECORD OF ALL FORMATIONS, INCLUDING COAL ENCOUNTERED BY THE WELLBORE.

For: CABOT OIL & GAS CORPORATION

JAN 17 2003

By: *[Signature]* Regional Manager
Date: 1/15/2002

CAL 4394

H2S smell 7070' (40 ppm)

DV tool @ 3523' to 3521'

Open Hole Fraced with 14,580 gallons 28% HCl

FORMATION	TOP	BOTTOM	REMARKS
SILT/SAND	0	1050	
SALT SAND	1050	1500	
SILT/SAND	1500	1770	
MAXTON	1770	1920	OIL @ 1880'-1886'
LITTLE LIME	1920	1950	
GREENBRIER			
LIMESTONE	1950	2135	OIL @ 2080'
SANDSTONE	2135	2450	
UPPER DEVONIAN	2450	6200	OIL @ 2650', 3010'
ONONDAGA			
LIMESTONE	6200	6405	
ORISKANY	6405	6460	
HELDERBERG	6460	6890	
SALINA	6890	7700	H2S @ 7070'
NEWBURG	7700	7710	
McKENZIE	7710	8130	
KEEFER	8130	8160	
UPPER ROSE HILL	8160	8480	
CLINTON IRON ORE	8480	8500	
LOWER ROSE HILL	8500	8680	
TUSCARORA	8680	8815	
JUNIATA SHALE	8815	9615	
MARTINSBURG SHALE	9615	11850	
TRENTON	11850	11215	
BLACK RIVER	11215	11710	
CHAZY LIMESTONE	11710	12011'	

