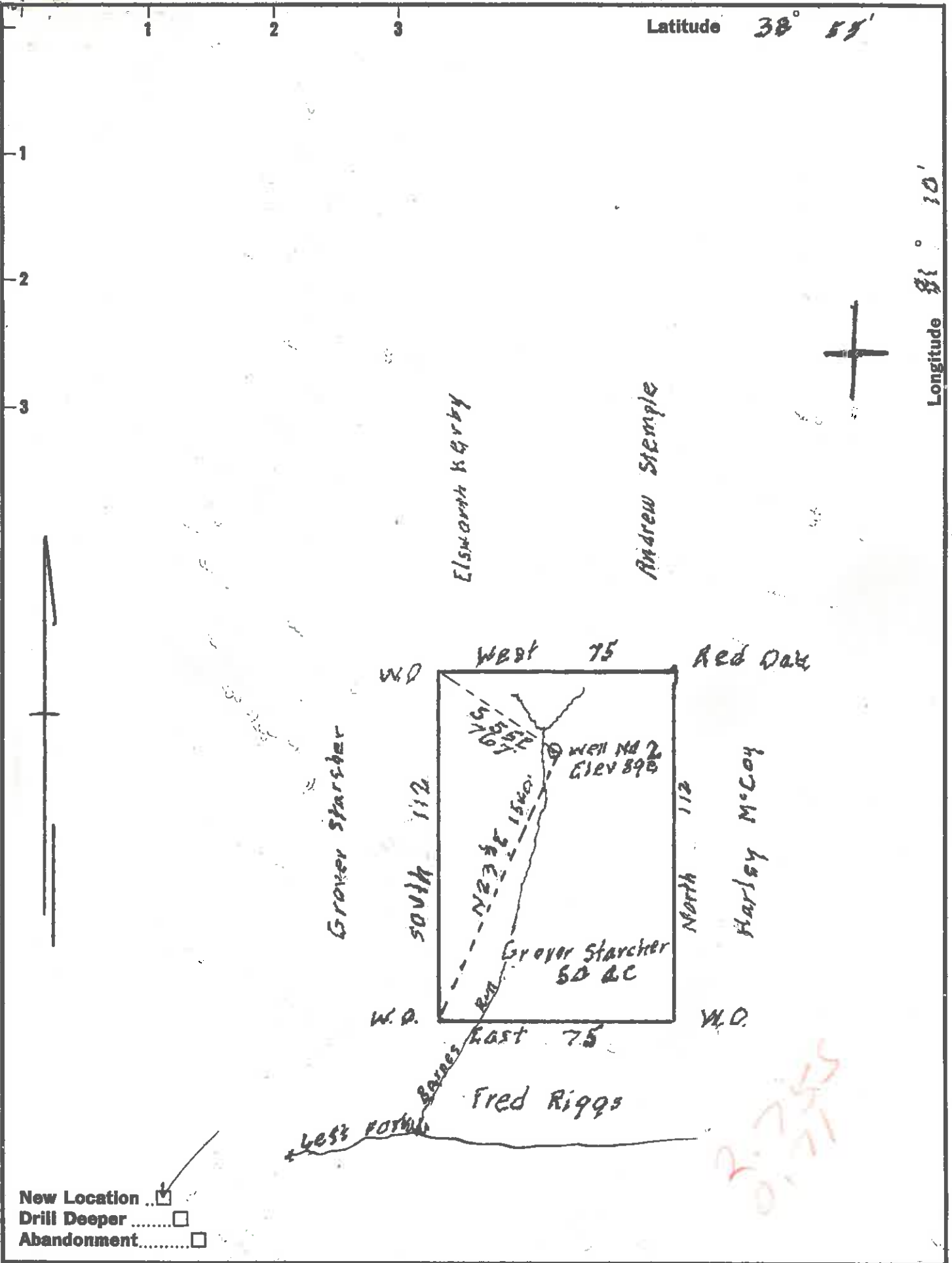


M



Latitude 38° 55'

Longitude 81° 10'

New Location   
 Drill Deeper   
 Abandonment

Company Francis Wain  
 Address Big Bend, W.Va.  
 Farm Grover Starcher  
 Tract \_\_\_\_\_ Acres 50 Lease No. \_\_\_\_\_  
 Well (Farm) No. 2 Serial No. \_\_\_\_\_  
 Elevation (Spirit Level) 890'  
 Quadrangle Arnoldsburg WC  
 County Calhoun District 664  
 Engineer Logan McDonald  
 Engineer's Registration No. 610  
 File No. \_\_\_\_\_ Drawing No. \_\_\_\_\_  
 Date 8-10-67 Scale 1" = 40' Big Bend

STATE OF WEST VIRGINIA  
 DEPARTMENT OF MINES  
 OIL AND GAS DIVISION  
 CHARLESTON

WELL LOCATION MAP  
 FILE NO. CAL-1979

+ Denotes location of well on United States Topographic Maps, scale 1 to 62,500, latitude and longitude lines being represented by border lines as shown.  
 - Denotes one inch spaces on border line of original tracing.

6-6-169

✓



STATE OF WEST VIRGINIA  
DEPARTMENT OF MINES  
OIL AND GAS DIVISION 3

Quadrangle Arnoldsburg

Permit No. Cal-1979

WELL RECORD

Oil or Gas Well Oil & Gas  
(KIND)

Company Francis E. Cain  
Address Big Bend, W. Va.  
Farm Grover Starcher Acres 50  
Location (waters) \_\_\_\_\_  
Well No. 2 Elev. 890  
District Lee County Calhoun  
The surface of tract is owned in fee by Grover Starcher  
Address Mt. Zion, W. Va.  
Mineral rights are owned by Grover Starcher et al  
Address Mt. Zion, W. Va.  
Drilling commenced Sept. 12, 1962  
Drilling completed Oct. 31, 1962  
Date Shot \_\_\_\_\_ From \_\_\_\_\_ To \_\_\_\_\_  
With \_\_\_\_\_  
Open Flow \_\_\_\_\_ /10ths Water in \_\_\_\_\_ Inch  
\_\_\_\_\_ /10ths Merc. in \_\_\_\_\_ Inch  
Volume show \_\_\_\_\_ Cu. Ft.  
Rock Pressure \_\_\_\_\_ lbs. \_\_\_\_\_ hrs.  
Oil show \_\_\_\_\_ bbls., 1st 24 hrs.  
WELL ACIDIZED \_\_\_\_\_

Casing and Tubing	Used in Drilling	Left in Well	Packers
Size			Kind of Packer
16			
18			
10	285		Size of
8 3/4	965		
6 3/4	1875	1875	Depth set
5 3/16			
3			Perf. top
2			Perf. bottom
Liners Used			Perf. top
			Perf. bottom

WELL FRACTURED 700 bbl. water 30,000 lbs. sand

CASING CEMENTED \_\_\_\_\_ SIZE \_\_\_\_\_ No. Ft. \_\_\_\_\_ Date \_\_\_\_\_  
6 bags aqua gel behind six inch

COAL WAS ENCOUNTERED AT \_\_\_\_\_ FEET \_\_\_\_\_ INCHES  
\_\_\_\_\_ FEET \_\_\_\_\_ INCHES FEET \_\_\_\_\_ INCHES  
\_\_\_\_\_ FEET \_\_\_\_\_ INCHES FEET \_\_\_\_\_ INCHES

RESULT AFTER TREATMENT 450,000 Cu. Ft. Gas 10 bb. Oil/ Day  
ROCK PRESSURE AFTER TREATMENT 535 lbs/24hrs.  
Fresh Water hole full Feet 25 Salt Water hole full Feet 1620

Formation	Color	Hard or Soft	Top	Bottom	Oil, Gas or Water	Depth	Remarks
mud			0	10			
sand		soft	10	25 30			
red rock			30	40			
lime			40	80			
slate			80	150			
lime			150	175			
slate			175	220			
sand			220	283			
slate			283	300			
red rock			300	320			
slate			320	390			
lime		hard	390	410			
red rock			410	415			
lime			415	458			
red rock			458	485			
slate & lime shells			485	520			
red rock			520	535			
lime			535	560			
red rock			560	635			
lime			635	670			
red rock			670	685			
lime & slate			685	790			
red rock			790	820			
lime			820	830			
sand			830	850			
lime			850	860			
lime	black		860	880			
rock	pink		880	885			
lime			885	960			
sand			960	1010			



Formation	Color	Hard or Soft	Top <sup>3</sup>	Bottom	Oil, Gas or Water	Depth Found	Remarks
lime			1010	1110			
sand			1110	1200			
slate	black		1200	1265			
sand			1265	1285			
slate			1285	1605			
sand			1605	1700	water	1620	hole full
<del>1700</del> slate			1700	1705			
sand			1705	1785			
slate			1785	1790			
little lime			1790	1812			
slate			1812	185			
lime			1815	1822			
pencil cave			1822	1832			
Big Lime			1832	1927			
sand			1927	1935			
lime	black		1935	1945			
Big Injun			1945	1985	oil & gas	1962-69	show
slate			1985	2025	oil	1969-83	show

Date Feb. 8, 1963

APPROVED Francis Casin, Owner

By \_\_\_\_\_ (Title)