

June 5/16/90

LATITUDE 39° 00' 00"

2,350'

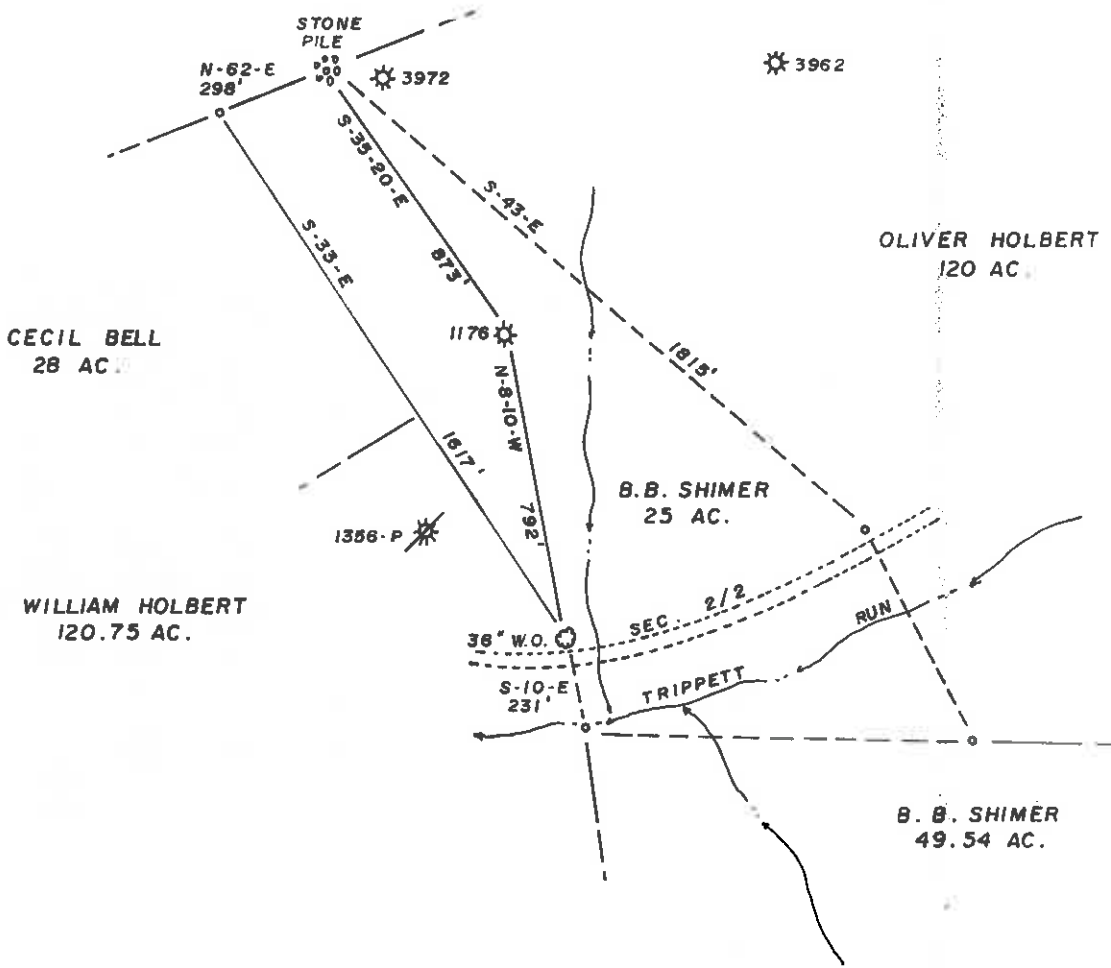
TOPO LOC.

0445
170W

SHIRLEY RAY GOODNIGHT
43 AC.

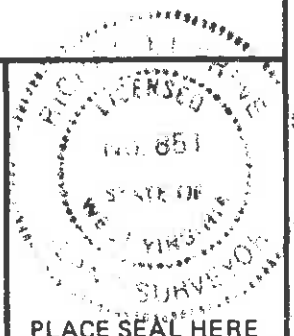
LONGITUDE 81° 07' 30"

NORTH



FILE NO. _____
 DRAWING NO. _____
 SCALE 1" = 500'
 MINIMUM DEGREE OF ACCURACY 1 IN 200
 PROVEN SOURCE OF ELEVATION B.M. ELV. 730
1500' N/W OF WELL

I THE UNDERSIGNED, HEREBY CERTIFY THAT THIS PLAT IS CORRECT TO THE BEST OF MY KNOWLEDGE AND BELIEF AND SHOWS ALL THE INFORMATION REQUIRED BY LAW AND THE REGULATIONS ISSUED AND PRESCRIBED BY THE DEPARTMENT OF MINES.
 (SIGNED) Richard J. Pine
 R.P.E. _____ L.L.S. 851



STATE OF WEST VIRGINIA
 DEPARTMENT OF MINES
 OIL AND GAS DIVISION



DATE 4/16, 19 90
 OPERATOR'S WELL NO. # 1
 API WELL NO. 47-013-1176F
 STATE COUNTY PERMIT

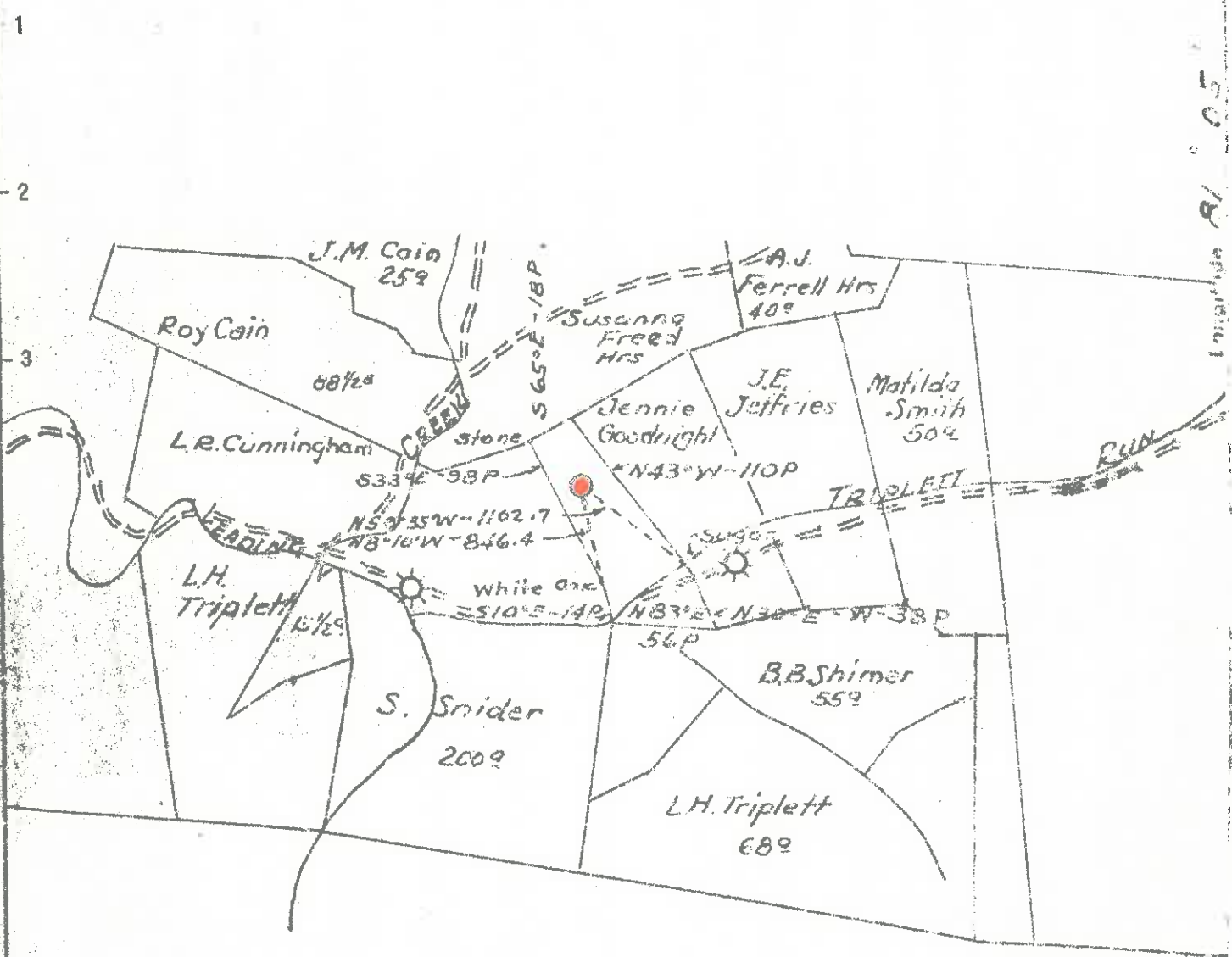
(+) DENOTES LOCATION OF WELL ON UNITED STATES TOPOGRAPHIC MAPS
 WELL TYPE: OIL GAS LIQUID INJECTION _____ WASTE DISPOSAL _____
 (IF "GAS,") PRODUCTION STORAGE _____ DEEP _____ SHALLOW
 LOCATION: ELEVATION 907.2' WATER SHED TRIPPETT RUN - LEADING CREEK
 DISTRICT SHERIDAN 3 COUNTY CALHOUN
 QUADRANGLE ANNAMORIAH 7.5 Arnoldsburg NC
 SURFACE OWNER B. B. SHIMER HEIRS ACREAGE 25
 OIL & GAS ROYALTY OWNER B. B. SHIMER HEIRS LEASE ACREAGE 25
 LEASE NO. _____
 PROPOSED WORK: DRILL _____ CONVERT _____ DRILL DEEPER _____ REDRILL _____ FRACTURE OR STIMULATE PLUG OFF OLD FORMATION _____ PERFORATE NEW FORMATION _____ OTHER PHYSICAL CHANGE IN WELL (SPECIFY) _____

PLUG AND ABANDON _____ CLEAN OUT AND REPLUG OWWO 6-6 Cabro Ritchie MAY 22 1990
 TARGET FORMATION BIG INJUN ESTIMATED DEPTH 2000' mine-Hartley (120)
 WELL OPERATOR E.M. & W.E. SMITH DESIGNATED AGENT WALTER E. SMITH
 ADDRESS P.O. BOX 244 919 ADDRESS P.O. BOX 244
GRANTSVILLE, W. V. 26147 GRANTSVILLE, W. V. 26147

mm

Latitude 39 00

+ Tcpo. Loc.



0.375
3.94

New Location
 Drill Deeper
 Abandonment

Company Godfrey L. Cabot Inc
 Address Box 1413 Charleston W.Va.
 Farm B. B. Shimer
 Tract _____ Acres 25 Lease No. 1-683
 Well (Farm) No. 907.2 Serial No. 1400
 Elevation (Spirit Level) 907.2
 Quadrangle Arnoldsburg NC
 County Calhoun District Sheridan
 Engineer H.L. Simmons Jr.
 Engineer's Registration No. 1652
 File No. _____ Drawing No. _____
 Date 11-20-52 Scale 1" = 1320'

STATE OF WEST VIRGINIA
 DEPARTMENT OF MINES
 OIL AND GAS DIVISION
 CHARLESTON

WELL LOCATION MAP
 FILE NO. CAL-1176

+ Denotes location of well on United States Topographic Maps, scale 1 to 62,500, latitude and longitude lines being represented by border lines as shown.

- Denotes one inch spaces on border line of original tracing.

WM-35



State of West Virginia DEPARTMENT OF ENERGY Oil and Gas Division

Date Nov. 15, 1990 Operator's Well No. 1 Farm B.B. Shimer API No. 47-013-1176 F

WELL OPERATOR'S REPORT OF DRILLING, FRACTURING AND/OR STIMULATING, OR PHYSICAL CHANGE

WELL TYPE: Oil X / Gas X / Liquid Injection / Waste Disposal / (IF "Gas," Production / Underground Storage / Deep / Shallow X/)

LOCATION: Elevation: 907.2 Watershed Trippett Run - Leading Creek District: Sheridan County Calhoun Quadrangle Annamoriah 7.5

COMPANY E.M. & W.E. Smith ADDRESS P.O. Box 244, Grantsville, WV DESIGNATED AGENT Walter E. Smith ADDRESS P.O. Box 244, Grantsville, WV SURFACE OWNER B.B. Shimer Heirs ADDRESS % Herbert Shimer Widen, WV 25211 MINERAL RIGHTS OWNER Same ADDRESS

Table with 4 columns: Casing Tubing, Used in Drilling, Left in Well, Cement fill up Cu. ft. Rows include sizes 20-16, 13-10, 9 5/8, 8 5/8, 7, 5 1/2, 4 1/2, 3, 2 and Liners used.

OIL AND GAS INSPECTOR FOR THIS WORK

Deo Mace ADDRESS Sandridge, WV

PERMIT ISSUED 5/15/90

DRILLING COMMENCED 5/15/90

DRILLING COMPLETED Old well drilled in 1953. REWORK. 5/15/90

IF APPLICABLE: PLUGGING OF DRY HOLE ON CONTINUOUS PROGRESSION FROM DRILLING OR REWORKING. VERBAL PERMISSION OBTAINED ON

GEOLOGICAL TARGET FORMATION Big Injun Depth 1961-86 feet

Depth of completed well 2010 feet Rotary / Cable Tools

Water strata depth: Fresh None feet; -Salt None feet

Coal seam depths: No Coal in area Is coal being mined in the area? No

OPEN FLOW DATA

Producing formation Big Injun Pay zone depth 1961-86 feet

Gas: Initial open flow Show Mcf/d Oil: Initial open flow Show Bbl/d

Final open flow 60 Mcf/d Final open flow 2 Bbl/d

Time of open flow between initial and final tests 24 hours

Static rock pressure 80 psig (surface measurement) after 24 hours shut in

(If applicable due to multiple completion--)

Second producing formation Pay zone depth feet

Gas: Initial open flow Mcf/d Oil: Initial open flow Bbl/d

Final open flow Mcf/d Oil: Final open flow Bbl/d

Time of open flow between initial and final tests hours

Static rock pressure psig (surface measurement) after hours shut in

(Continue on reverse side)

DETAILS OF PERFORATED INTERVALS, FRACTURING OR STIMULATING, PHYSICAL CHANGE, ETC.

B.B. Shimer Well No. 1 (API No. 47-013-1176 F
 Treatment- Acidized - 1000 Gal 15% Hcl Acid; 275 Gal. P-121 solvent;
 3 Gal. F-28; 6 Gal. U-42; 3 Gal. W-54; 15 Gal. U-74.
 used in treatment.
 Pumped 1000 Gal Hcl 15% Acid and 275 Gal. P-112 Solvent,
 including the above additives, beginning at 130#. Completed
 treatment at 120#. Flush at 50#.
 Well was shut in after treatment 72-hours before opening up.
 Well was bailed (no swab used) into a 10 bbl. tank. The
 contents was then pumped into the production tank (100 bbl.)
 on location. No fluid or ~~rock~~ debris was put in pit.

| FORMATION | COLOR | HARD OR SOFT | TOP FEET | BOTTOM FEET | REMARKS Including indication of all fresh and salt water, coal, oil and gas |
|-----------|-------|--------------|----------|-------------|---|
| | | | | | No physical changes made in well depth. All casing left in hole, as originally charged in 1953. No new strings of tubular equipment were installed. |

(Attach separate sheets as necessary)

E.M. & W.E. Smith
 Well Operator
 By: Walter J. Agent
 Date: 11-15-90

Note: Regulation 2.02(i) provides as follows:
 "The term 'log' or 'well log' shall mean a systematic
 detailed geological record of all formations, including
 soil, encountered in the drilling of a well."

10614

WELL RECORD /

Amoldburg
Coal - 1176

SERIAL No. **1100** OPERATING DISTRICT **Grantville** Map Square Lot No. 60-54
 FARM **B. B. SHINER** NO. **1** LEASE NO. **1-683**
 COUNTY **Calhoun** TAX DISTRICT **Shelburne** STATE **N. Va.**
 DRILLING COMMENCED **December 1, 1952** DRILLING COMPLETED **January 2, 1953**

| ROCK PRESSURE RECORD | | | | PRODUCING SAND RECORD | | | |
|----------------------|------|--------|------|-----------------------|------------|------------|--------------|
| Salt | Sand | No. in | Hrs. | Salt | Sand, from | Ink. Prod. | M. C. F. Gas |
| | | | | | | | |
| | | | | | | | |
| | | | | | | | |

| OPEN FLOW | | | | CASING RECORD | | | | |
|--------------------------------------|------------|----------|------|---------------|--------|------------------|--------------|----------------|
| Time | Conditions | 10ths | Feet | SIZE | WEIGHT | DOWN IN DRILLING | LEFT IN WELL | HOW CASING SET |
| Volume | 310 | M. C. F. | | 8 1/2" | 24# | 1000 | 1000 | Shoe. |
| 24 HOUR PRODUCTION TEST AFTER TUBING | | | | 7" | 24# | 1000 | 1000 | Shoe. |
| M. C. F. | | | | 2" | 3.75# | 1687 | 1687 | Packer. |
| Blk. Oil | | | | | | | | |

TUBED AND SHUT IN Date _____
 Packer, Size _____ Kind _____
 Set, Depth _____ Size Anchor _____
 Perf. Top _____ Bottom _____
 Perf. Top _____ Bottom _____

ELEVATION: **907**

SHOOTING RECORD **NOT SHOT.**
 Acid Shot with _____ from _____ to _____ Date _____
 Gauge Before { Acid Shot Gauge Min. Hrs. After { Acid Shot

| FORMATION | COLOR | TOP | BOTTOM | STEEL LINE MEASUREMENTS | HARD OR SOFT | OIL, GAS OR WATER | DEPTH FOUND | REMARKS |
|----------------|-------|------|--------|-------------------------|--------------|-------------------|-------------|--------------------|
| Top Soil | | 0 | 15 | | | | | |
| Sand | | 15 | 25 | | | | | |
| Red Rock | | 25 | 50 | | | | | |
| Shells | | 50 | 75 | | | | | |
| Sand | | 75 | 100 | | | Water | 87' | 2 blrs. per hour. |
| Red Rock | | 100 | 130 | | | | | |
| Sand | | 130 | 135 | | | | | |
| Red Rock | | 135 | 160 | | | | | |
| White Slate | | 160 | 185 | | | | | |
| Lime | | 185 | 205 | | | | | |
| Red Rock | | 205 | 250 | | | | | |
| Slate & Shell | | 250 | 285 | | | | | |
| Lime | Blue | 285 | 315 | | | | | |
| Red Rock | | 315 | 335 | | | | | |
| Lime | | 335 | 365 | | | | | |
| Red Rock | | 365 | 390 | | | | | |
| Lime | Blue | 390 | 460 | | | | | |
| Red Rock | | 460 | 550 | | | | | |
| Sand | | 550 | 565 | | | | | |
| Red Rock | | 565 | 590 | | | | | |
| Lime | Blue | 590 | 680 | | | Water | 637' | One blr. per hour. |
| Red Rock | | 680 | 710 | | | | | |
| Lime | Blue | 710 | 744 | | | | | |
| Red Rock | | 744 | 825 | | | | | |
| Slate | | 825 | 885 | | | | | |
| Lime | | 885 | 905 | | | | | |
| Red Rock | | 905 | 976 | | | | | |
| Sand | | 976 | 1033 | | | | | |
| Slate & Shells | | 1033 | 1065 | | | | | |
| Pink Rock | | 1065 | 1078 | | | | | |
| Sand | | 1078 | 1130 | | | | | |
| Lime | | 1130 | 1265 | | | | | |
| Sand | | 1265 | 1400 | | | Gas | 1349 | Show. |
| Slate | Black | 1400 | 1480 | | | | | |
| Sand | | 1480 | 1510 | | | | | |



| FORMATION | COLOR | TOP | BOTTOM | STEEL LINE MEASUREMENTS | HARD OR SOFT | OIL, GAS OR WATER | DEPTH FOUND | REMARKS |
|----------------|-------|------|--------|-------------------------|--------------|-------------------|------------------|---------|
| Slate & Shells | | 1510 | 1548 | | | | | |
| Edne | | 1548 | 1580 | | | | | |
| Slate & Shells | | 1580 | 1676 | | | | | |
| Salt Sand | | 1676 | | | | Gas | 1676-19, 75 Mof | |
| | | | | | | " | 1690-94, 110 Mof | |
| Total Depth | | | 1694 | | | | | |

THIS WELL ABANDONED

TOTAL DEPTH

DATE

APPROVED

FOREMAN