

WW-7  
8-30-06



West Virginia Department of Environmental Protection  
Office of Oil and Gas  
**WELL LOCATION FORM: GPS**

API: 47-013-00639 WELL NO.: Hardman, A. #11

FARM NAME: Allen Hardman

RESPONSIBLE PARTY NAME: Troy M. Valasek

COUNTY: Calhoun DISTRICT: Center

QUADRANGLE: Arnoldsburg

SURFACE OWNER: Bee Creek Hunting Club, Inc.

ROYALTY OWNER: CGAS Properties, L.P.

UTM GPS NORTHING: 4306900.5

UTM GPS EASTING: 488207.6 GPS ELEVATION: 1007.27'

The Responsible Party named above has chosen to submit GPS coordinates in lieu of preparing a new well location plat for a plugging permit or assigned API number on the above well. The Office of Oil and Gas will not accept GPS coordinates that do not meet the following requirements:

1. Datum: NAD 1983, Zone: 17 North, Coordinate Units: meters, Altitude: height above mean sea level (MSL) – meters.
2. Accuracy to Datum – 3.05 meters
3. Data Collection Method:

Survey grade GPS ; Post Processed Differential

Real-Time Differential

Mapping Grade GPS ; Post Processed Differential

Real-Time Differential

4. **Letter size copy of the topography map showing the well location.**

I the undersigned, hereby certify this data is correct to the best of my knowledge and belief and shows all the information required by law and the regulations issued and prescribed by the Office of Oil and Gas.

  
Signature

Sr. Landman  
Title

10/21/20  
Date

RECEIVED  
Office of Oil and Gas

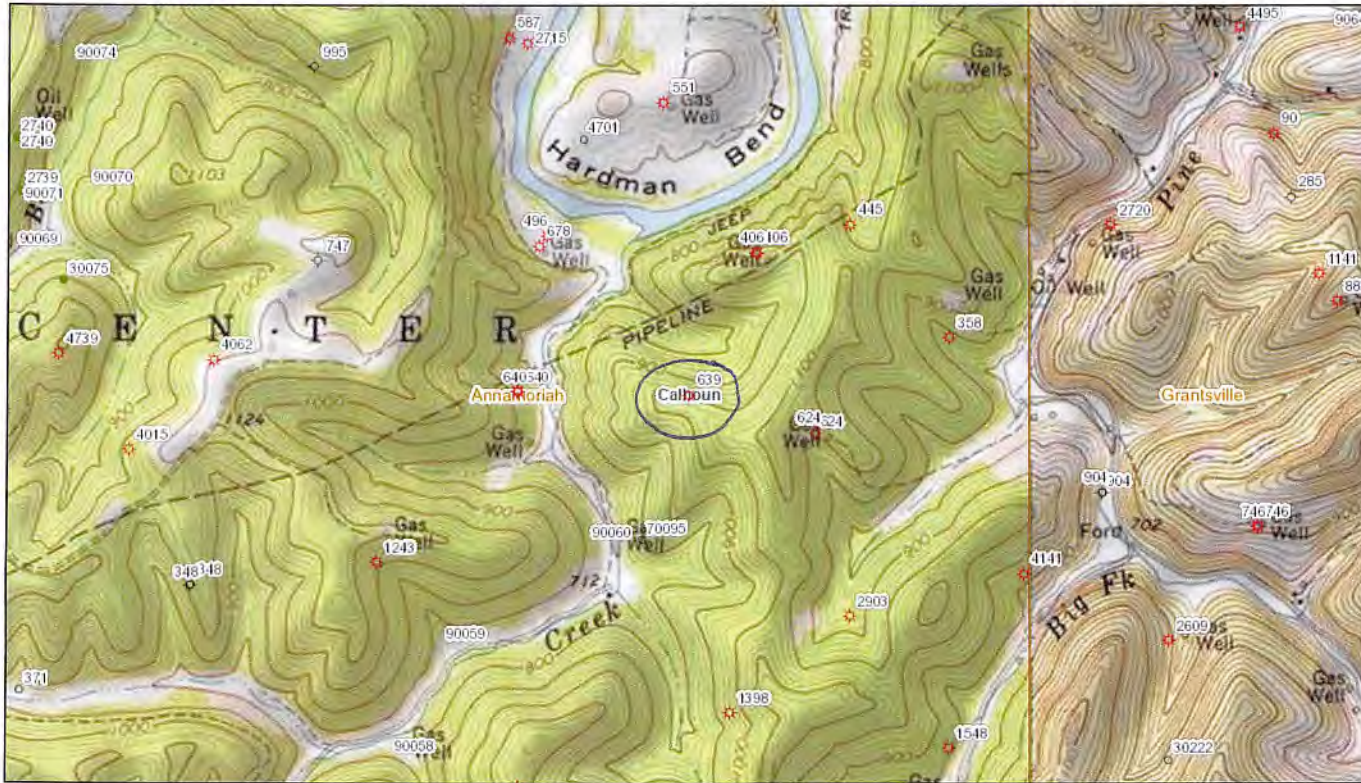
NOV 18 2020

WV Department of  
Environmental Protection



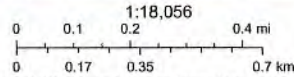
47-013-00639 P

### WV Oil & Gas Wells (WVOG)



6/4/2020, 2:41:08 PM

- Individual Wells
- ★ Oil and Gas Combination
  - ◇ Gas
  - Oil
  - ▲ Service
  - Other (including Permits)
  - ◇ Dry
- State Boundary
- Labels (7.5' Quadrangles)
- 7.5' Quadrangles
- County Labels



Copyright © 2013 National Geographic Society, i-cubed, The West Virginia Geological and Economic Survey (WVGES), West Virginia Geological and Economic Survey (WVGES)

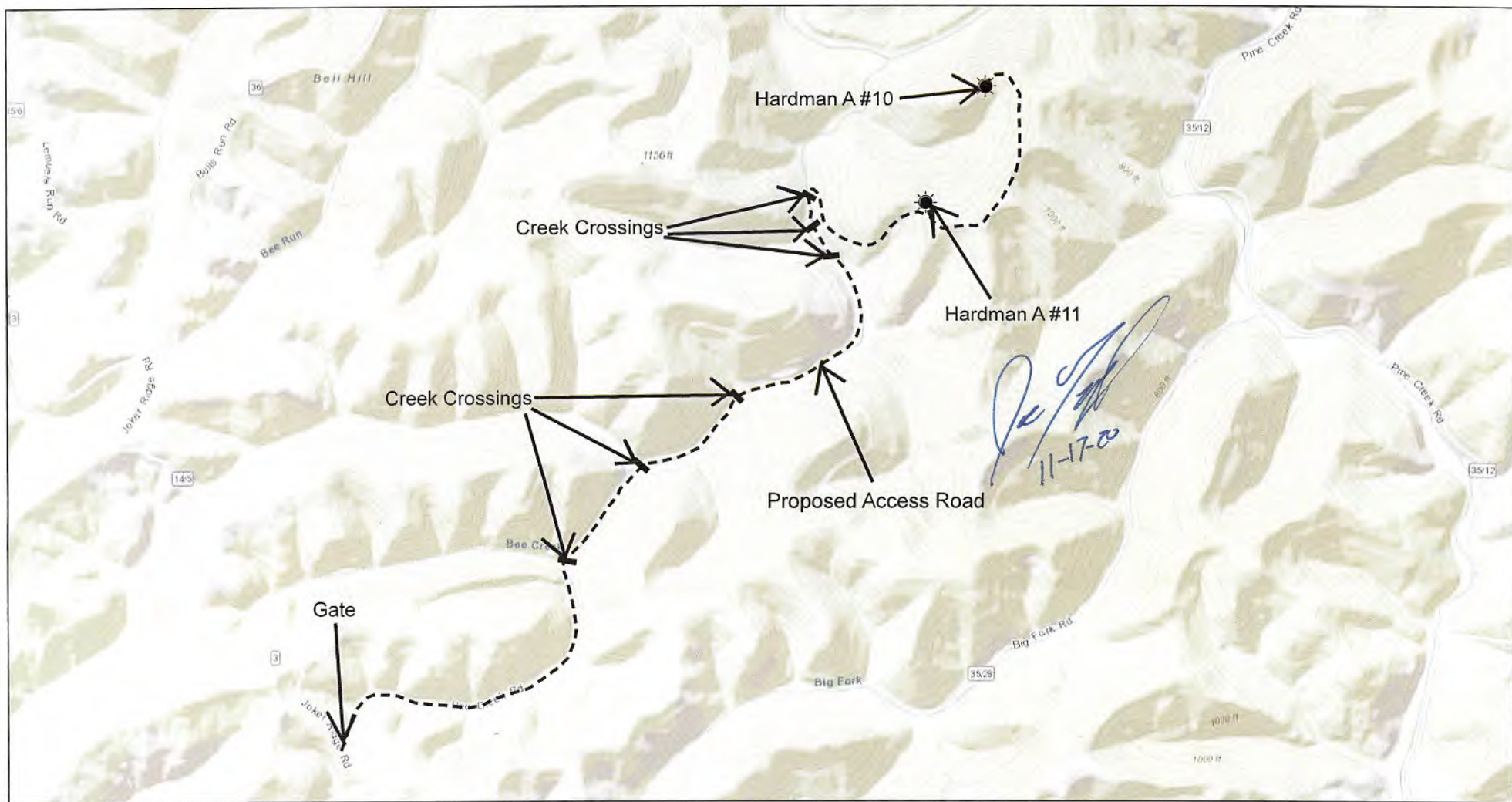
West Virginia Geological and Economic Survey

The West Virginia Geological and Economic Survey (WVGES) | Copyright © 2013 National Geographic Society, i-cubed |

RECEIVED  
Office of Oil and Gas  
NOV 18 2020  
WV Department of  
Environmental Protection

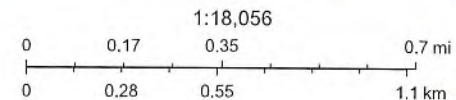


# ArcGIS Web Map



10/21/2020, 3:42:09 PM

**RECEIVED**  
 Office of Oil and Gas  
**NOV 18 2020**  
 WV Department of  
 Environmental Protection

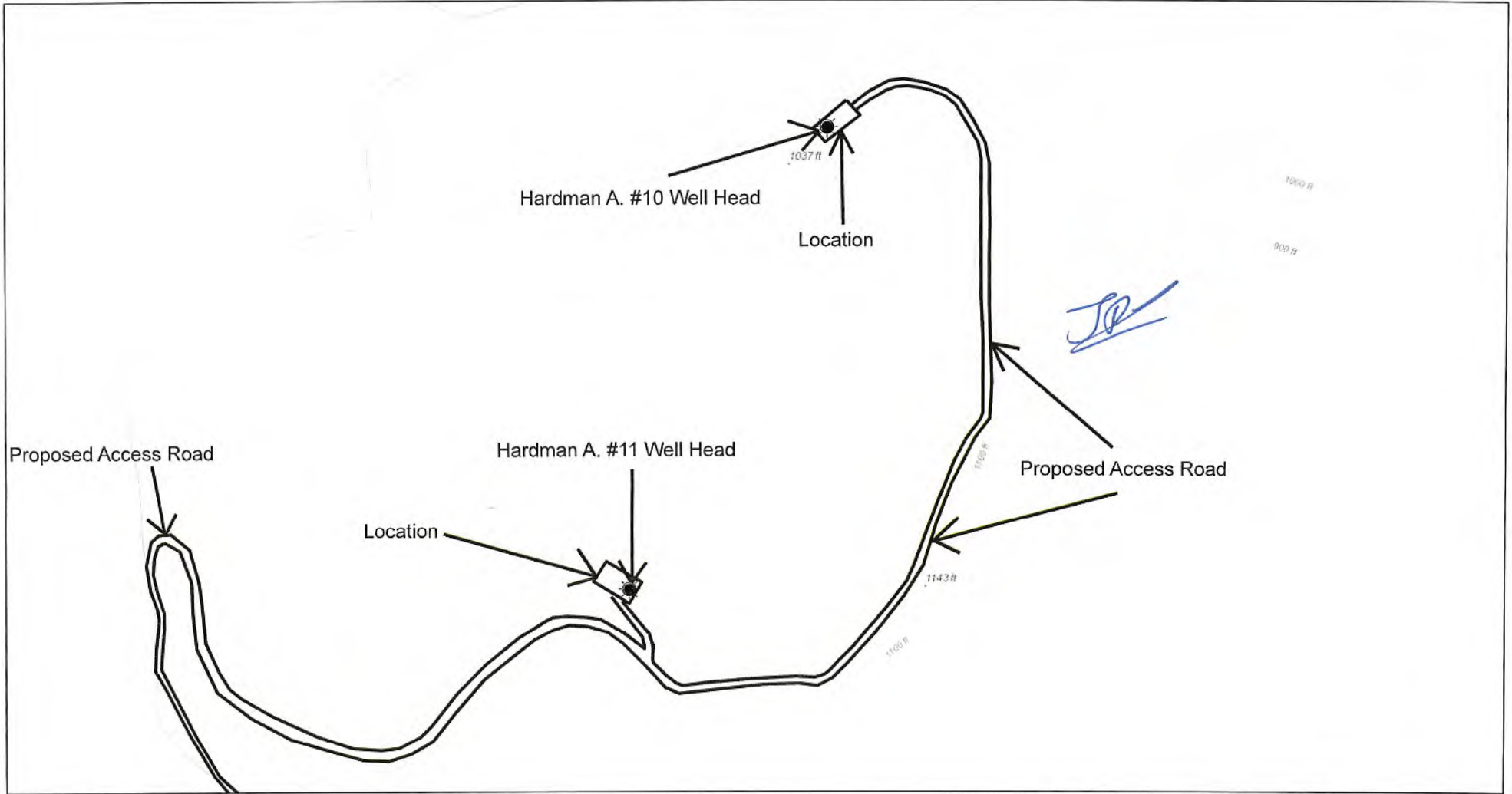


Sources: Esri, HERE, Garmin, Intermap, increment P Corp., GEBCO, USGS, FAO, NPS, NRCAN, GeoBase, IGN, Kadaster NL, Ordnance Survey, Esri Japan, METI, Esri China (Hong Kong), (c) OpenStreetMap contributors, and the GIS User Community

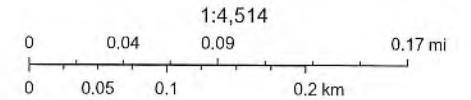
Web AppBuilder for ArcGIS  
 VITA, West Virginia GIS, Esri, HERE, Garmin, INCREMENT P, USGS, METI/NASA, EPA, USDA |

47-013-00639 P

# ArcGIS Web Map



10/21/2020, 3:30:31 PM



Sources: Esri, HERE, Garmin, Intermap, increment P Corp., GEBCO, USGS, FAO, NPS, NRCAN, GeoBase, IGN, Kadaster NL, Ordnance Survey, Esri Japan, METI, Esri China (Hong Kong), (c) OpenStreetMap contributors, and the GIS User Community

Web AppBuilder for ArcGIS  
VITA, West Virginia GIS, Esri, HERE, Garmin, INCREMENT P, USGS, EPA, USDA |

RECEIVED  
Office of Oil and Gas  
NOV 18 2020  
WV Department of  
Environmental Protection

47-013-00639P