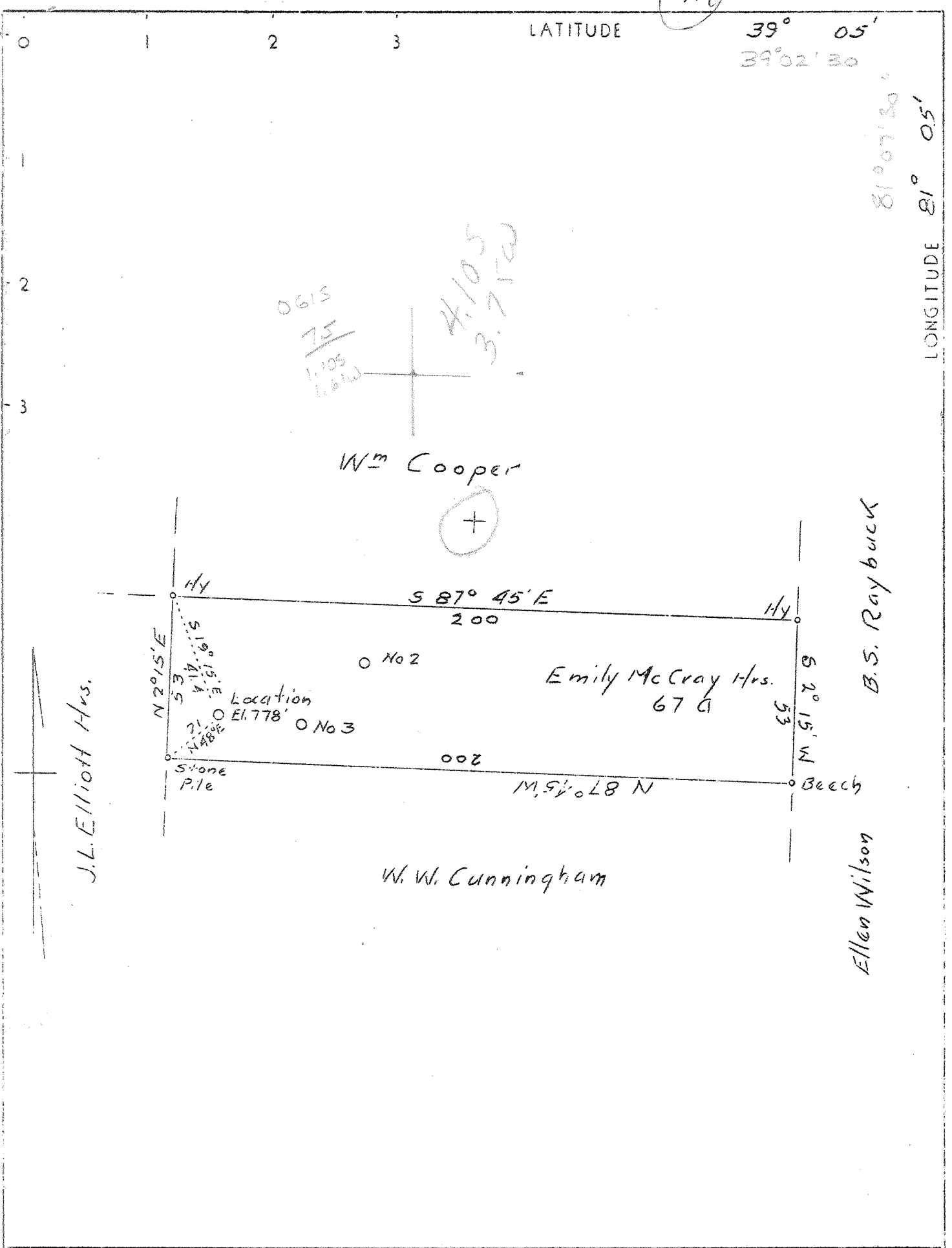


MM



Company <u>Richter Oil Co.</u>	STATE OF WEST VIRGINIA Department of Mines Oil and Gas Division Charleston W E L L L O C A T I O N M A P File No <u>CAL-388</u> +Denotes location of well on U. S. Topographic Maps, scale 1 to 62,500, latitude and longitude lines being represented by border lines as shown. -Denotes one inch spaces on border 1/4 of original tracing.
Address <u>Bronard, W. Va</u>	
Farm <u>Emily McCray, heirs</u>	
Tract <u>One Acres 67</u> Lease No.	
Well (Farm) No. <u>Four</u> Serial No.	
Elevation (Spirit Level) <u>778'</u>	
Quadrangle <u>Harrisville / Macfarlan</u>	
County <u>Calhoun</u> District <u>Sheridan</u>	
Engineer <u>Logan McDonald</u>	
Engineer's Registration No. <u>610</u>	
File No. _____ Drawing No _____	
Date <u>11-23-36</u> Scale <u>1" = 40 Rods</u>	

6-6-120

WEST VIRGINIA DEPARTMENT OF MINES

OIL AND GAS DIVISION

WELL RECORD

Permit No. Cal-388

Oil Well

Harrisville Quad.

Company - Richter Oil Company
 Address - Brohard, W. Va.
 Farm - Emily McCray. Acres 67
 Location - Three Mile Run
 Well No. - Four. Elev. 778
 District - Sheridan. County- Calhoun
 Surface - McCray Heris; A. B. McCray Adm.
 Address - Brohard, W. Va.
 Mineral - Same A. B. McCray Adm for Emily McCray
 Address - Brohard, W. Va.
 Drilling - Commenced- 2-3-37
 Completed- 3-1-37
 Date Shot - 3-4-37. Depth- 1658
 Open Flow - Very Small
 Rock Press.-
 Oil - Ten bbls 1st 24 hrs.
 Fresh Water- 50 feet
 Salt Water - 1660 feet

CASING & TUBING

13	15
10	290
8½	873
6-5/8	1429½
2	1648

Formation Color				Formation Color				
Hor	TOP	Bottom	Result	Hor	TOP	Bottom	Result	
Top Soil	Black	S	1	12	Slate	Black	1506	1540
Rock	Blue	H	12	20	Salt Sand		1540	
Slate	White	H	20	30				
Sand			30	55	Water 50	Oil 1623	1640	1646
Rock	Red	S	55	75				
Slate	White		75	105	Total Depth			1658
Rock	Red		105	130				
Lime		H	130	142				
Slate	White		142	165				
Mud	Blue	S	165	183				
Sand			183	195				
Rock	Red		195	215				
Slate	White		215	240				
Lime			240	265				
White Slate	White		265	295				
Sand			295	325				
Slate	White		325	350				
Lime			350	378				
Slate	White		378	400				
Lime Shell			400	409				
Sand			409	420				
Slate	White		420	465				
Lime Shell			465	476				
Slate	White		476	535				
Sand			535	550				
Little Red	Red		550	580				
Sand			580	600				
Big Red	Red		600	690				
Slate	White		690	750				
Little Duncard			750	763				
Slate	Black		763	785				
Red Rock			785	820				
Slate	White		820	843				
Rock	Pink		843	864				
Slate	White		864	873				
Big Duncard			873	888				
Slate	Black		888	913				
Sand			913	933				
Slate	White		933	970				
Lime Shell			970	983				
Slate	Black		983	1024				
Slate	White		1024	1090				
Shell			1090	1099				
Sand			1099	1120				
Slate	Black		1120	1151				
Long Streak Sand			1151	1242				
Slate	Black		1242	1424				
Gas Sand			1424	1506	Gas 1442			