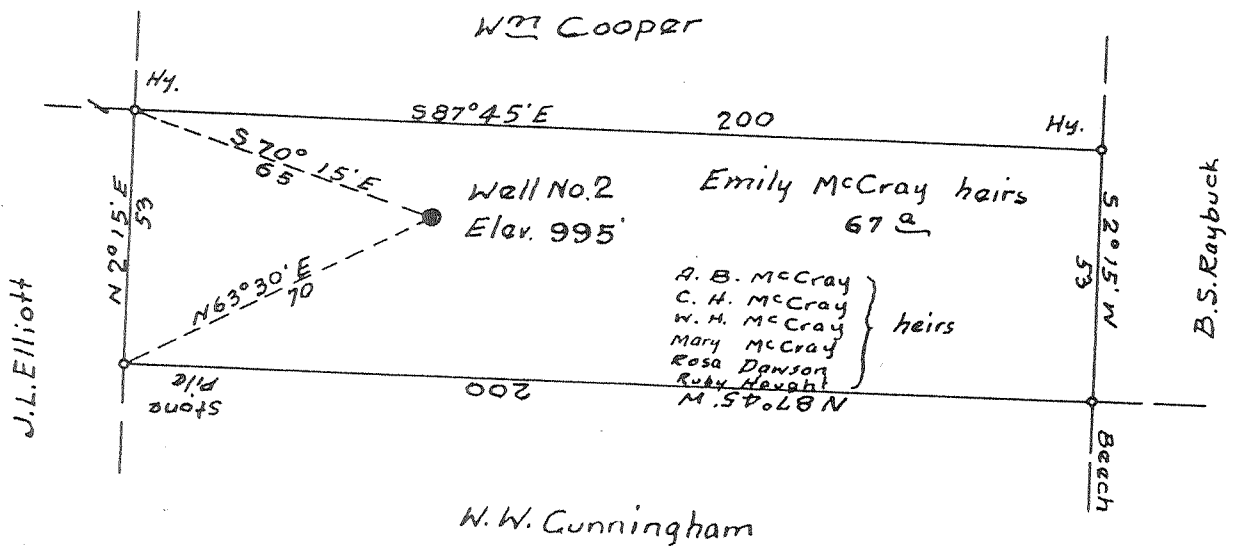




Plat of the proposed location of Well No. 2, of the Richter Oil Co. of Brohard, West Virginia, on the Emily McCray farm, consisting of 67 acres, located in Sheridan district, Calhoun county, West Virginia.

CAL-287



ENGINEER'S CERTIFICATE

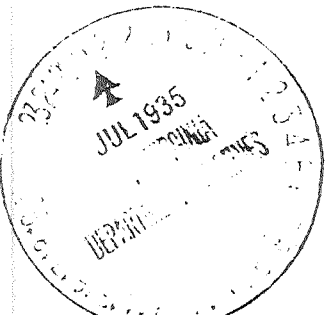
I, the undersigned, hereby certify that this Map is correct, and shows all the information, to the best of my knowledge and belief, required by the Oil and Gas Section of the Mining Laws of West Virginia.

*Logan McDonald*  
 \_\_\_\_\_  
 Engineer

Acknowledged before me, a Notary Public, this the 22nd. day of July, 1935,

*[Signature]*  
 \_\_\_\_\_  
 Notary Public

My commission expires on the 2 day of July, 1940.



WEST VIRGINIA DEPARTMENT OF MINES

OIL AND GAS DIVISION

PRELIMINARY DATA SHEET NO. 1

File No. CAL-287

Well No. 2

Richter Oil Company Company of Brohard, W. Va.

on the Emily McCray Heirs Farm

containing 67 acres. Location

Sheridan District, in Calhoun County, West Virginia

The surface of the above tract is owned in fee by Emily McCray Heirs A. B. McCray Agt. of Brohard, W. Va. address, and the mineral rights are owned by

Emily McCray Heirs of

The oil and gas privileges are held under lease by the above named company, and this well is drilled under permit No. Cal-287 issued by the West Virginia Department of Mines, Oil and Gas Division

August 5, 1935.

Elevation of surface at top of well, 995 Spirit Barometric.

The number of feet of the different sized casings used in the well.

16 feet 13" size. Wood conductor.

433 feet 10" size, csg. 1085 feet 8 1/4" sized csg.

1627 feet 6" size, csg. feet sized csg.

feet size, csg. feet sized csg.

None packer of size, set at

packer of size, set at

None, in casing perforated at feet to feet.

2" Tubing, in casing perforated at 1816 feet to feet.

Coal was encountered at None feet, thick ness inches, and at

feet; thickness inches; and at feet; thickness inches.

Liners were used as follows: (Give details) None

12/3/35

Date.

Approved Richter Oil Company, Owner.

By W. S. Kinney (TITLE) Sup't.



CAL 681

OIL OR GAS WELL McCray #2

Richter Oil Company ..... Company

COMPLETION DATA SHEET

Brohard, W. Va. .... Address

No. 2

WELL No. 2

FARM Emily McCray Heirs

FORMATION RECORD

Name	Color	Character	Oil, Gas or Water	Top	Bottom	Thickness	Total Depth	Remarks
Red Soil	Red	clay		0	12	12	12	
Sand Rock	white	sand		12	30	18		
White Slate	" "			30	75	45		
Sand				75	95	20		
White Slate	"			95	125	30		
Red Rock	Red			125	150	25		
Lime	Gray			150	170	20		
White Slate	White			170	200	30		
Red Rock	Red			200	225	25		
Sand	Gray			225	255	30		
Slate	White			255	280	25		
Rock	Red			280	315	35		
Slate	White			315	370	55		
Sand	"			370	400	30		
Slate	"			400	410	10		
Rock	Red			410	449	39		
Lime	Gray			449	470	21		
Slate	White			470	520	50		
Shell	Gray			520	529	9		
Rock	Red			529	535	6		
Slate	White			525	560	25		
Rock	Red			560	567	7		
Shell	Gray	Lime		567	575	8		
Sand	"			575	605	30		
Slate	White			605	663	58		
Rock	Red			663	670	7		
Slate	White			670	694	24		
Sand	"			694	720	26		
Slate	"			720	733	13		
Sand	"			733	810	83		
Rock	Red			810	900	90		
Slate	White			900	930	30		
Lime	Shell			930	937	7		
Slate	White			937	965	28		
Lime	"			965	985	20		
Sand	"			985	1015	30		
Slate	Black			1015	1035	20		
Rock	Red			1035	1049	14		
Slate	White			1049	1070	21		
Lime	"			1070	1081	11		
Gobel	"	Rock		1081	1105	26		
Slate	Black			1105	1130	25		
Slate	White			1130	1160	30		
Lime	Gray			1160	1178	18		

Continued:

Well was <sup>shot</sup> shot at 1816 to 1839 .....feet; well was shot at.....feet.

Fresh water at 90 feet and 376 feet .....feet; <sup>salt</sup> fresh water at 1850 - 1853 .....feet.

Well was <sup>producing</sup> producing <sup>hole</sup> hole

12/3/35  
Date

Approved Richter Oil Co., BY: W.S. Kinney  
Owner

NOTE: All bottom formations must be noted as indicated above and all key-rocks and oil and gas sands must be recorded under their proper geological names in the district as well as any local names commonly used in the district for such strata.

# CAL- 287

Name	Color	Character	Oil, Gas or Water	Top	Bot.	Thickness
Slate	Black			1178	1200	22
Sand	White			1200	1230	30
Slate	Black			1230	1261	31
Shell	Gray			1261	1268	7
Slate	White			1268	1300	32
Shell	"			1300	1307	7
Slate	Black			1307	1350	43
Sand	White		1410 Gas	1350	1448	98
Slate	black			1448	1530	82
Sand	Gray			1530	1570	40
break	Black			1570	1624	54
Gas Sand	Gray	Sand	1647 Gas	1624	1665	41
break	black	slate		1665	1740	75
Salt Sand	White			1740		
			1816-1820 Oil			
			1825-1832 Oil	Total	1853	