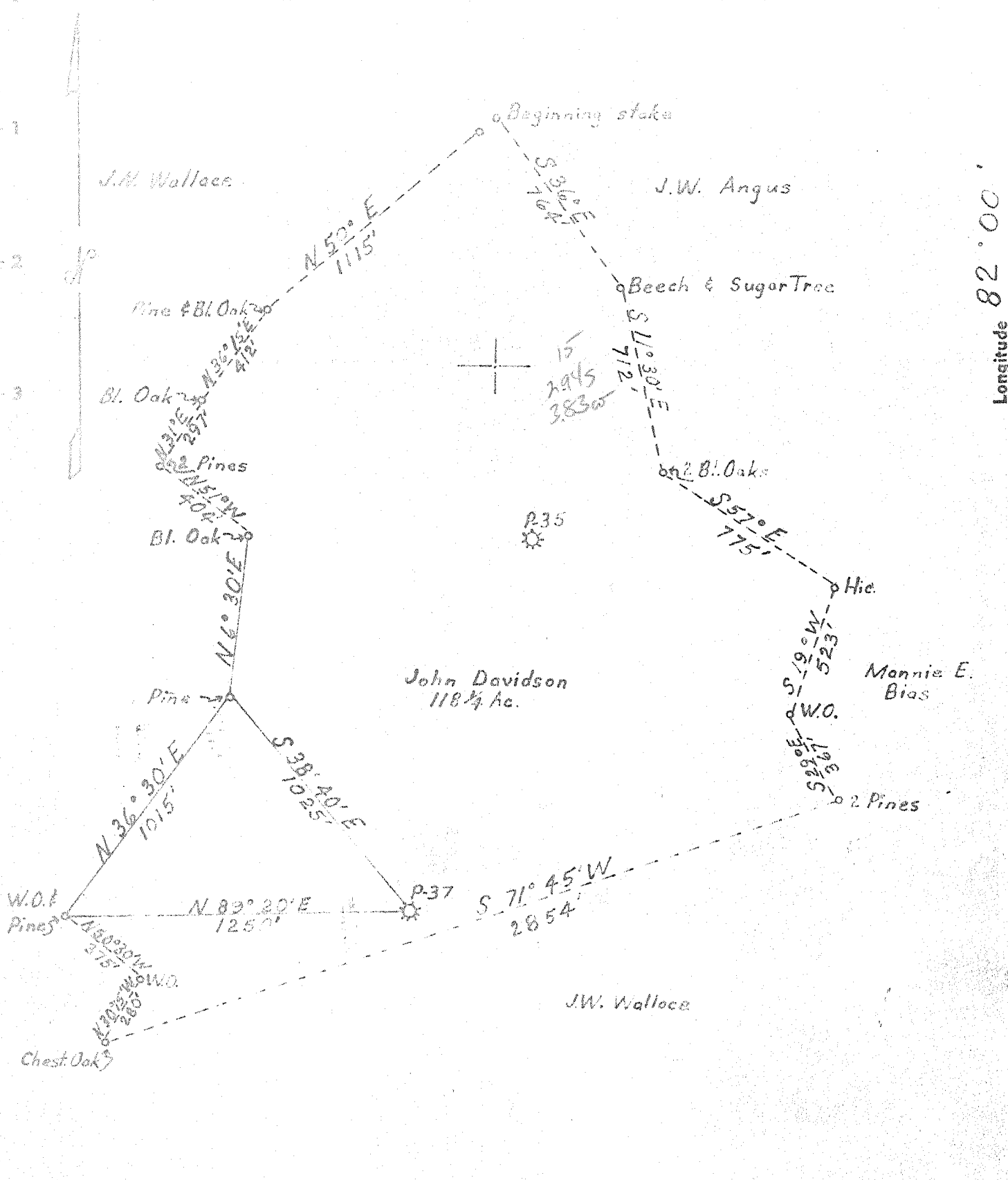


Latitude 38° 25'

Longitude 82° 00'



New Location MINIMUM ERROR OF CLOSURE 1 IN 200
 Drill Deeper SOURCE OF ELEVATION 8M, 628 AT HUDSON CHURCH
 Redrill
 Abandonment "I, the undersigned, hereby certify that this map is correct to the best of my knowledge and belief and shows all the material required by paragraph 6 of the rules and regulations of the oil and gas section of the mining law of West Virginia."
 7-29-68 RDR

Company HAL PACK
 Address HAMLIN, WEST VIRGINIA
 Farm JOHN DAVIDSON
 Tract Acres 118 1/4 Lease No. LWC-40
 Well (Farm) No. Serial No. P-37
 Elevation (Spirit Level) 770 EC
 Quadrangle MILTON
 County CABELL District GRANT
 Engineer J.H. Wall
 Engineer's Registration No. 2602
 File No. Drawing No.
 Date 1-25-68 Scale 1" = 500'

STATE OF WEST VIRGINIA
 DEPARTMENT OF MINES
 OIL AND GAS DIVISION
 CHARLESTON

WELL LOCATION MAP
 FILE NO. CAB-112-A

+ Denotes location of well on United States Topographic Maps, scale 1 to 62,500, latitude and longitude lines being represented by border lines as shown.

-- Denotes one inch spaces on border line of original tracing.