

51° 28' LONGITUDE

LATITUDE 38° 25'

*Handwritten:* W 102 W  
419

**CERTIFICATE**

"I, the undersigned, hereby certify that this map is correct to the best of my knowledge and belief and shows all the information required by paragraph 6 of the rules and regulations of the oil and gas section of the mining laws of West Virginia."  
Minimum degree of accuracy is one part in 200

Signed W. S. Smully  
SURVEYOR

N.B. No. 92 Pg. 58

- NEW LOCATION
- RECONDITION
- DRILL DEEPER
- ABANDONMENT

COMPANY	COMMONWEALTH GAS CORPORATION		
ADDRESS	P.O. BOX 1433 CHARLESTON, W. VA.		
FARM	H.W. WALKER HEIRS		
MAP	W.V. 4	ACRES	120
LEASE NO.	95		
WELL (FARM) NO.	1	SERIAL NO.	C-4
ELEVATION (SPIRIT LEVEL)	571.0		
QUADRANGLE	GUYANDOT S.E.		
COUNTY	CABELL	DISTRICT	McCOMAS
POINT OF PROVEN ELEVATION	WELL No. C-14 (U.S.G.S. Datum)		
FILE NO.	DRAWING NO.		
DATE	JULY 6, 1964.		
	SCALE 1" = 660'		

JUL 18 1964

STATE OF WEST VIRGINIA  
DEPARTMENT OF MINES  
OIL AND GAS DIVISION  
CHARLESTON  
**WELL LOCATION MAP**  
FILE No. CAB-102-A

+ DENOTES LOCATION OF WELL ON UNITED STATES TOPOGRAPHIC MAPS. SCALE 1 TO 62,500. LATITUDE AND LONGITUDE LINES BEING REPRESENTED BY BORDER LINES AS SHOWN.  
- DENOTES ONE INCH SPACES ON BORDER LINE OF ORIGINAL TRACING.

*Handwritten:* H.W. WALKER HEIRS on 1 (C-4) - COMMONWEALTH GAS CORP. - CAB-102-A

Guyandot WV  
= AM

8° 25'

51 • 28  
LONGITUDE

5/14

EDNA E. PINNELL

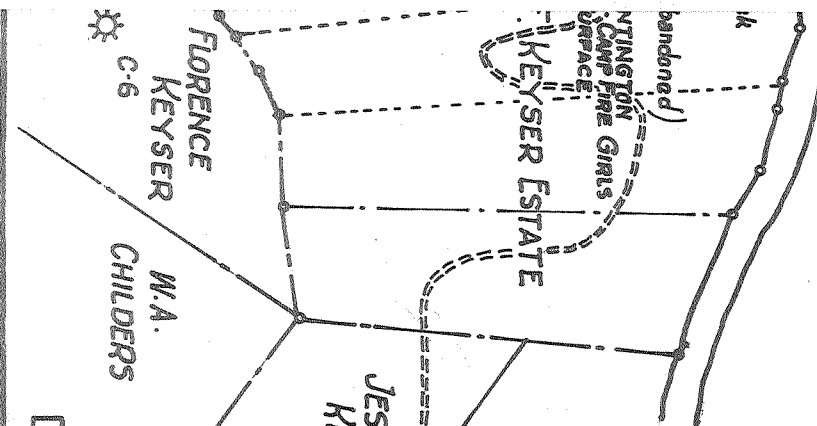
Cabell Co  
102-A

4.773  
100.1

102-A

82° 15'

4190



- NEW LOCATION
- RECONDITION
- DRILL DEEPER
- ABANDONMENT

**CERTIFICATE**

"I, the undersigned, hereby certify that this map is correct to the best of my knowledge and belief and shows all the information required by paragraph 6 of the rules and regulations of the oil and gas section of the mining laws of West Virginia."  
 Minimum degree of accuracy is one part in 200

Signed W. S. Smully  
 1964  
 Surveyor

N.B. No. 92 Ps. 58

COMPANY COMMONWEALTH GAS CORPORATION  
 ADDRESS P.O. BOX 1433 CHARLESTON, W. VA.  
 FARM H.W. WALKER HEIRS  
 MAP W.V. 4 ACRES 120 LEASE NO. 95  
 WELL (FARM) NO. 1 SERIAL NO. C-4  
 ELEVATION (SPIRIT LEVEL) 571.2  
 QUADRANGLE GUYANDOT S.E.  
 COUNTY CABELL DISTRICT M: COMAS  
 POINT OF PROVEN ELEVATION WELL No. C-14 (U.S.G.S. Datum)

FILE NO. \_\_\_\_\_ DRAWING NO. \_\_\_\_\_  
 DATE JULY 6, 1964. SCALE 1" = 660'

JUL 18 1964

STATE OF WEST VIRGINIA  
 DEPARTMENT OF MINES  
 OIL AND GAS DIVISION  
 CHARLESTON  
 WELL LOCATION MAP  
 FILE No. CAB-102-A

† DENOTES LOCATION OF WELL ON UNITED STATES TOPOGRAPHIC MAPS. SCALE 1 TO 62,500. LATITUDE AND LONGITUDE LINES BEING REPRESENTED BY BORDER LINES AS SHOWN.  
 - DENOTES ONE INCH SPACES ON BORDER LINE OF ORIGINAL TRACING.

H.W. WALKER HEIRS ON (C-4) - COMMONWEALTH GAS CORP - CAB-102-A