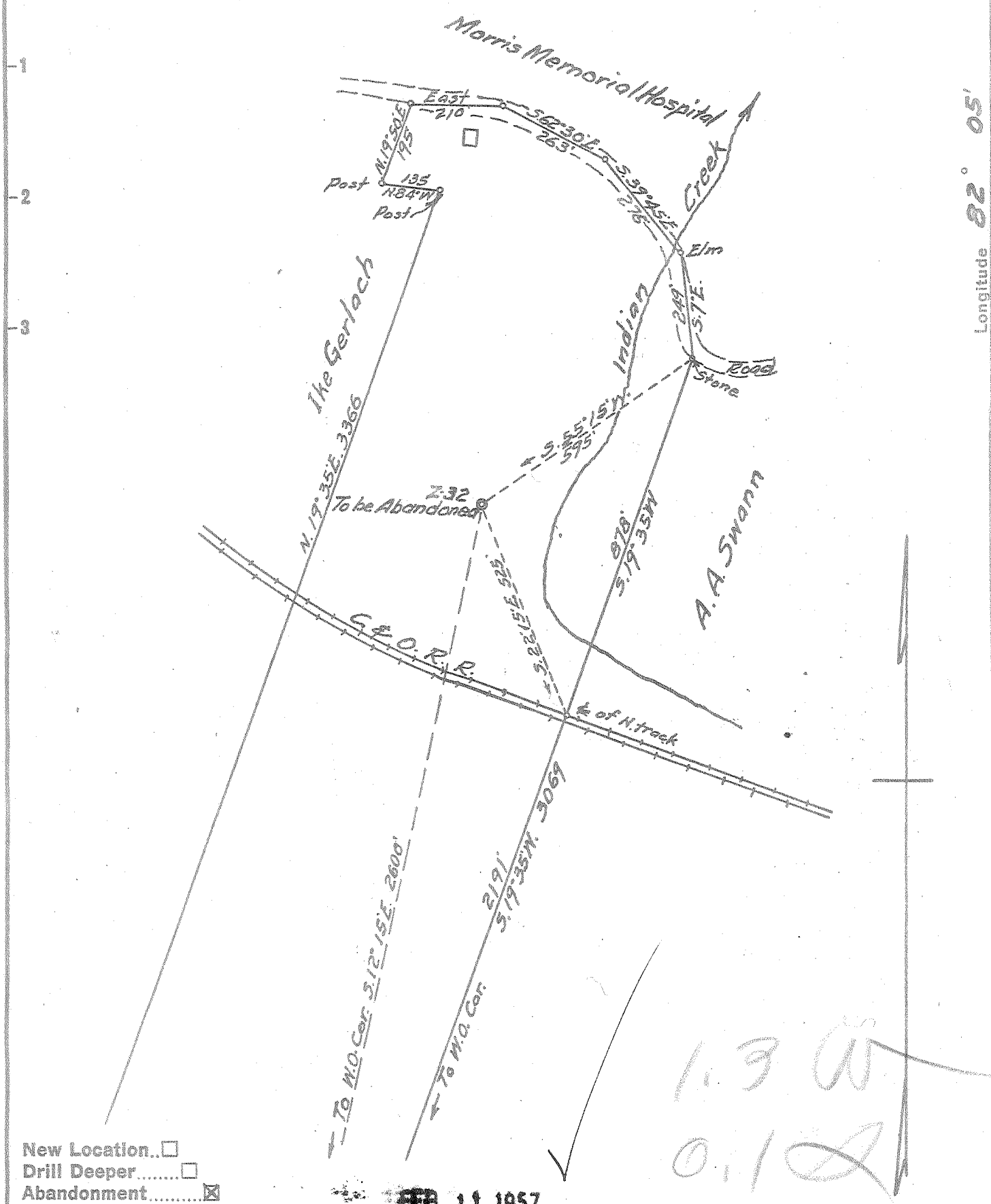


M

Latitude 38° 25'

Longitude 82° 05'



New Location...
 Drill Deeper.....
 Abandonment.....

FEB. 11. 1957

Company SOUTHEASTERN GAS CO.
 Address CHARLESTON, W.VA.
 Farm M. H. JORDAN
 Tract _____ Acres 505 Lease No. HMC-20
 Well (Farm) No. 1 Serial No. Z-32
 Elevation (Spirit Level) 595
 Quadrangle MILTON
 County CABELL District GRANT
 Engineer G. E. Ewing
 Engineer's Registration No. 309
 File No. _____ Drawing No. _____
 Date 11-15-56 Scale 1" = 300'

STATE OF WEST VIRGINIA
 DEPARTMENT OF MINES
 OIL AND GAS DIVISION
 CHARLESTON

WELL LOCATION MAP
 FILE NO. CAB-79-A

+ Denotes location of well on United States Topographic Maps, scale 1 to 62,500, latitude and longitude lines being represented by border lines as shown.

- Denotes one inch spaces on border line of original tracing.

Ball Gap (207)

M. H. JORDAN No. 1 (Z-32) - SOUTHEASTERN GAS CO. - CAB-79-A