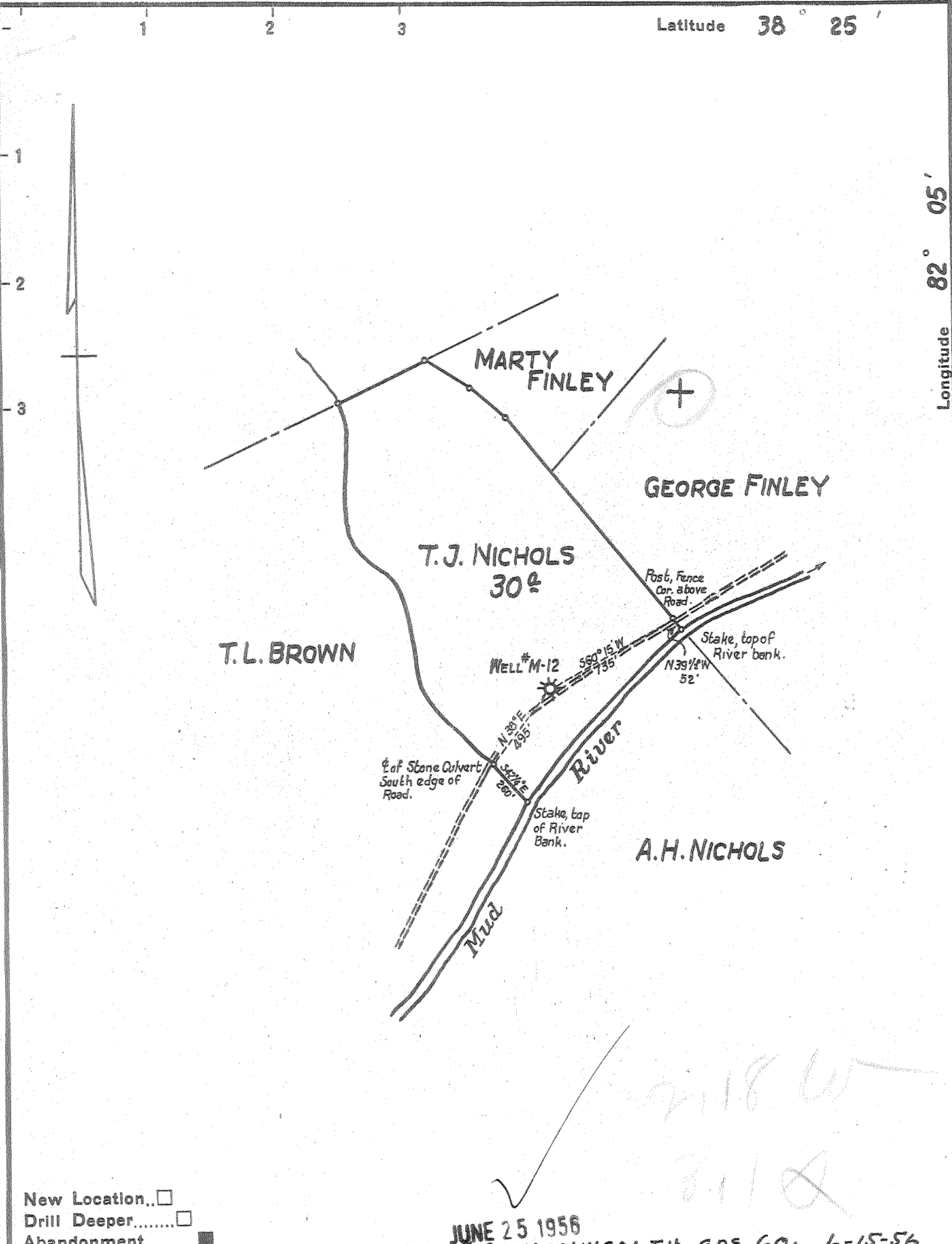


Latitude 38° 25'

Longitude 82° 05'



- New Location...
- Drill Deeper.....
- Abandonment.....

NOV: JUNE 25 1956
 NOW: COMMONWEALTH GAS CO. 6-15-56

Company	MONICKEL GAS COMPANY		
Address	P.O. BOX 1433 CHARLESTON, W.VA.		
Farm	T. J. NICHOLS		
Tract	Acres	30	Lease No.
Well (Farm) No.	Serial No.	M-12	
Elevation (Spirit Level)	639.2'		
Quadrangle	MILTON S.E.		
County	CABELL	District	GRANT
Engineer	J. E. BILLINGSLEY		
Engineer's Registration No.	757		
File No.	Drawing No.		
Date	MAY 10, 1955	Scale	1" = 650'

STATE OF WEST VIRGINIA
 DEPARTMENT OF MINES
 OIL AND GAS DIVISION
 CHARLESTON

WELL LOCATION MAP
 FILE NO. CAB-70-A

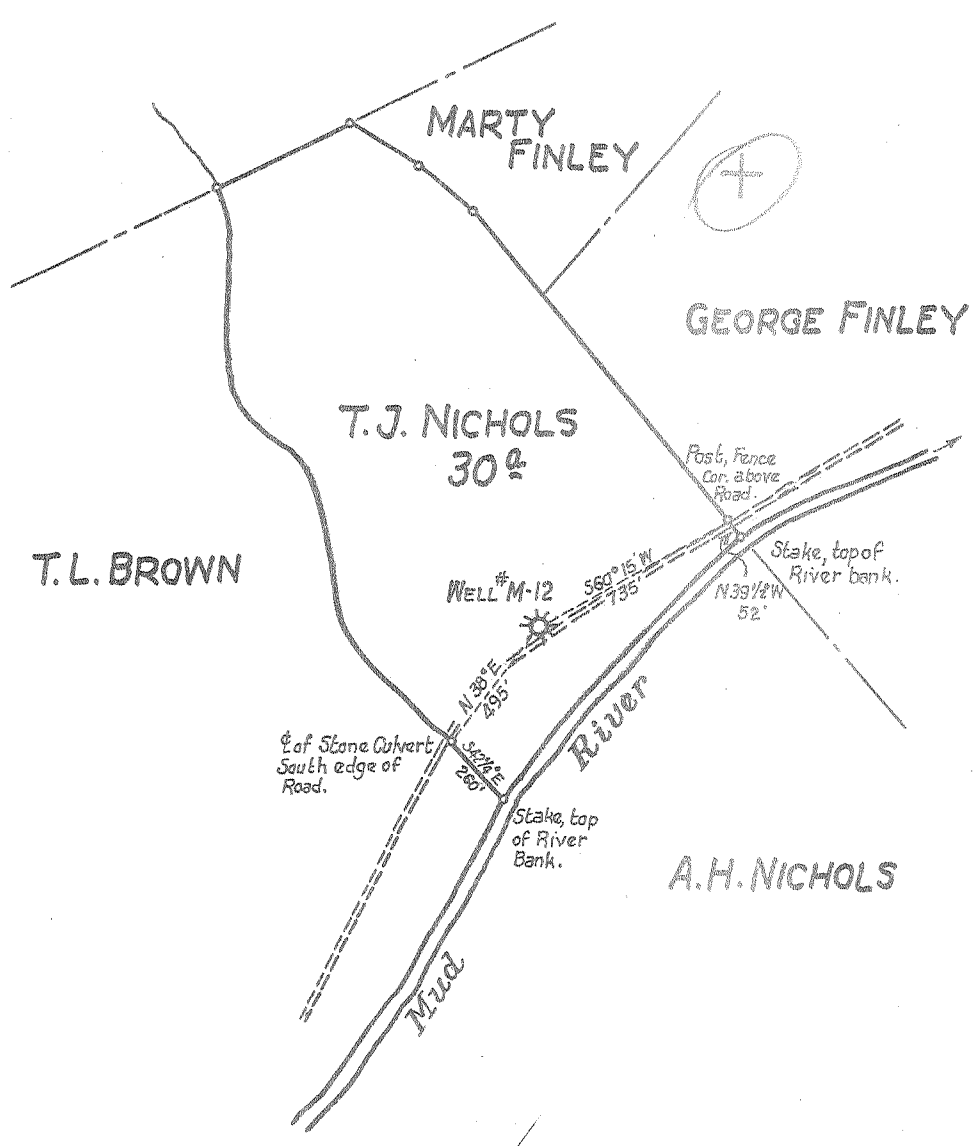
+ Denotes location of well on United States Topographic Maps, scale 1 to 62,500, latitude and longitude lines being represented by border lines as shown.

- Denotes one inch spaces on border line of original tracing.

T. J. NICHOLS No. M-12 - MONICKEL GAS CO. - CAB-70-A

Latitude 38° 25'

Longitude 82° 05'



New Location...
 Drill Deeper.....
 Abandonment.....

MAY 23 1955

218 W
 3.1 A

Company	MONICKEL GAS COMPANY		
Address	P.O. BOX 1433 CHARLESTON, W. VA.		
Farm	T. J. NICHOLS		
Tract	Acres	30	Lease No.
Well (Farm) No.	Serial No.	M-12	
Elevation (Spirit Level)	639.2'		
Quadrangle	MILTON S.E.		
County	District	CABELL GRANT	
Engineer	J. E. BILLINGSLEY		
Engineer's Registration No.	757		
File No.	Drawing No.		
Date	MAY 10, 1955		
Scale	1" = 660'		

STATE OF WEST VIRGINIA
 DEPARTMENT OF MINES
 OIL AND GAS DIVISION
 CHARLESTON

WELL LOCATION MAP
 FILE NO. CAB-70-A

+ Denotes location of well on United States Topographic Maps, scale 1 to 62,500, latitude and longitude lines being represented by border lines as shown.
 --- Denotes one inch spaces on border line of original tracing.

T. J. NICHOLS No. M-12 — 660 Ball Gap (207) — MONICKEL GAS CO. — CAB-70-A



STATE OF WEST VIRGINIA
DEPARTMENT OF MINES
OIL AND GAS DIVISION

222

Ab MILTON QUADRANGLE

WELL RECORD

Permit No. 704 Oil or Gas Well GAS
(KIND)

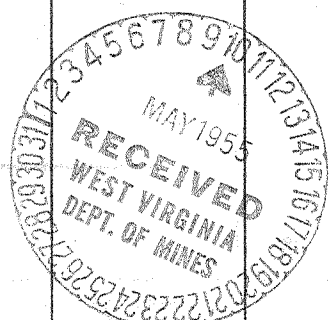
Company Monickel Gas Company
Address P. O. Box 1433, Charleston, W. Va.
Farm T. J. Nichols Acres 30
Location (waters) Mud River
Well No. 11-12 Elev. 639.2
District Grant County Cabell
The surface of tract is owned in fee by T. J. Nichols
Address Route #2 Milton, W. Va.
Mineral rights are owned by Same
Address _____
Drilling commenced March 3, 1924
Drilling completed April 5, 1924
Date Shot Dec. 17, 1935 From 2031 To 2049
With 130#

Casing and Tubing	Used in Drilling	Left in Well	Packers
Size			Kind of Packer
16			
18-12	38	38	Spang
10			Size of <u>6-3/16"</u>
8 1/4	388		2"x16"
6 1/4	1280		Depth set <u>1928-1932</u>
5 3/16	1598	1598	
3			Perf. top <u>2044</u>
2	2069	2069	Perf. bottom <u>2069</u>
Liners Used			Perf. top _____
			Perf. bottom _____

Open Flow /10ths Water in _____ Inch
/10ths Merc. in _____ Inch
Volume 67,392 Cu. Ft.
Rock Pressure 290 lbs. 72 hrs.
Oil _____ bbls., 1st 24 hrs.
Fresh water _____ feet _____ feet
Salt water 990 feet _____ feet

CASING CEMENTED _____ SIZE _____ No. Ft. _____ Date _____
COAL WAS ENCOUNTERED AT _____ FEET _____ INCHES
_____ FEET _____ INCHES _____ FEET _____ INCHES
_____ FEET _____ INCHES _____ FEET _____ INCHES

Formation	Color	Hard or Soft	Top	Bottom	Oil, Gas or Water	Depth Found	Remarks
Surface			0	20			
Red Rock			20	48			
Sand			48	90			
Red Rock			90	130			
Blue Mud			130	150			
Sand			150	200			
Slate			200	290			
Sand			290	350			
Slate			350	385			
Sand			385	560			
Slate			560	600			
Sand			600	670			
Slate			670	825			
Slate			825	910			
SALT SAND			910	1035	Water	990	Hole Full.
Slate & Lime			1035	1194			
MAXTON SAND			1194	1220			
Slate			1220	1236			
LITTLE LIME			1236	1261			
Pencil Cave			1261	1264			
BIG LIME			1264	1444		1280	6-5/8" Csg set
Slate & Shells			1444	1515			
BIG INJUN			1515	1582	Water	1527	
Black Lime			1582	1612			
Slate & Shells			1612	1800			
Shell			1800	1806			
Slate			1806	1814			
Shell			1814	1828			
Slate			1828	1835			
Shell			1835	1848			
Slate			1848	1859			
Shell			1859	1865			
Slate			1865	1870			
Shell			1870	1877			
Slate			1877	1888			
Shell			1888	1901			
Slate			1901	1910			
Shell			1910	1913			



Formation	Color	Hard or Soft	Top	Bottom	Oil, Gas or Water	Depth Found	Remarks
Slate			1913	1920			
Shell for Packer			1920	1929			
Slate			1929	1941			
Shell			1941	1946			
Slate & Shells			1946	2018			
Brown Shale			2018	2029			
BEREA SAND			2029	2049	Gas	2033-2044	240,000 cu.ft.
Black Lime			2049	2071			
<u>TOTAL DEPTH</u>				2071			

NOTE:

This well was drilled in 1924 with an original open flow of 240,000 Cu. Ft. and original Rock Pressure of 435 lbs. in 15 hours.

In 1935 this well was shot from 2032 to 2049 with 130 lbs. of gelatin and tubed in at 67,392 Cu.Ft. with a 72 hour Rock Pressure of 290 lbs.

Date April 26, 1955

APPROVED Monickel Gas Company, Owner

By W. S. Gravelly, Engineer
(Title)