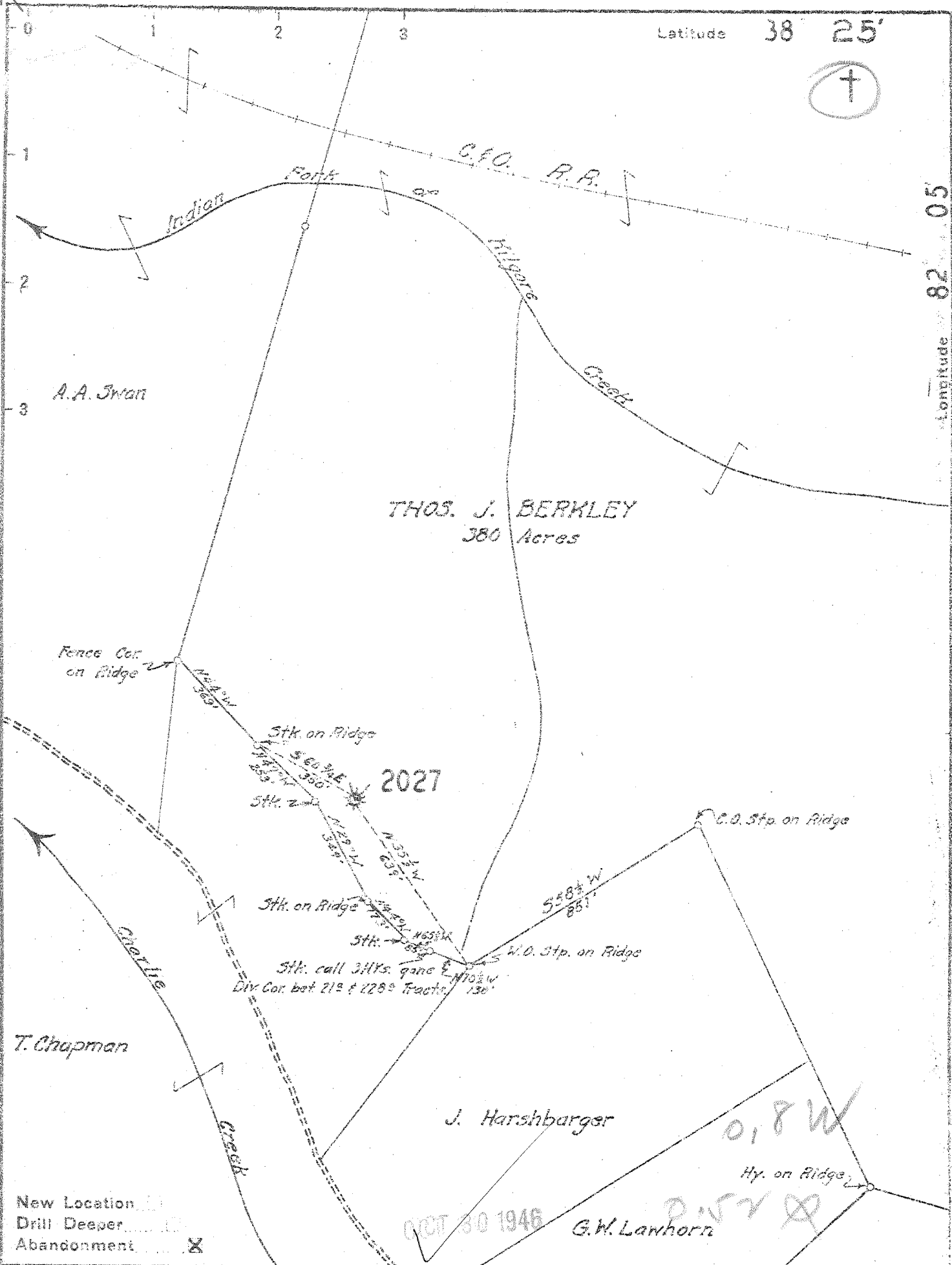


Latitude 38° 25'



Longitude 82° 05'



New Location

Drill Deeper

Abandonment

Company	UNITED FUEL GAS CO.
Address	CHARLESTON, W.VA.
Farm	THOS. J. BERKLEY
Tract	Acres 380
Lease No.	24630
Well (Farm) No.	Serial No. 2027
Elevation (Spirit Level)	881.46
Quadrangle	MILTON
County	CABELL
District	GRANT
Engineer	<i>[Signature]</i>
Engineer's Registration No.	662
File No.	36-63
Drawing No.	
Date	Oct. 1, 1946
Scale	1" = 400'

STATE OF WEST VIRGINIA  
DEPARTMENT OF MINES  
OIL AND GAS DIVISION  
CHARLESTON

WELL LOCATION MAP  
FILE NO. CAB-42-A

+ Denotes location of well on United States Topographic Maps, scale 1 to 62,500, latitude and longitude lines being represented by border lines as shown.

- Denotes one inch spaces on border line of original tracing.

THOS. J. BERKLEY No. 2027 - 6-6 Ball Gap (207) UNITED FUEL GAS CO. - CAB-42-A



