

0 1 2 3

Latitude 38 25

1

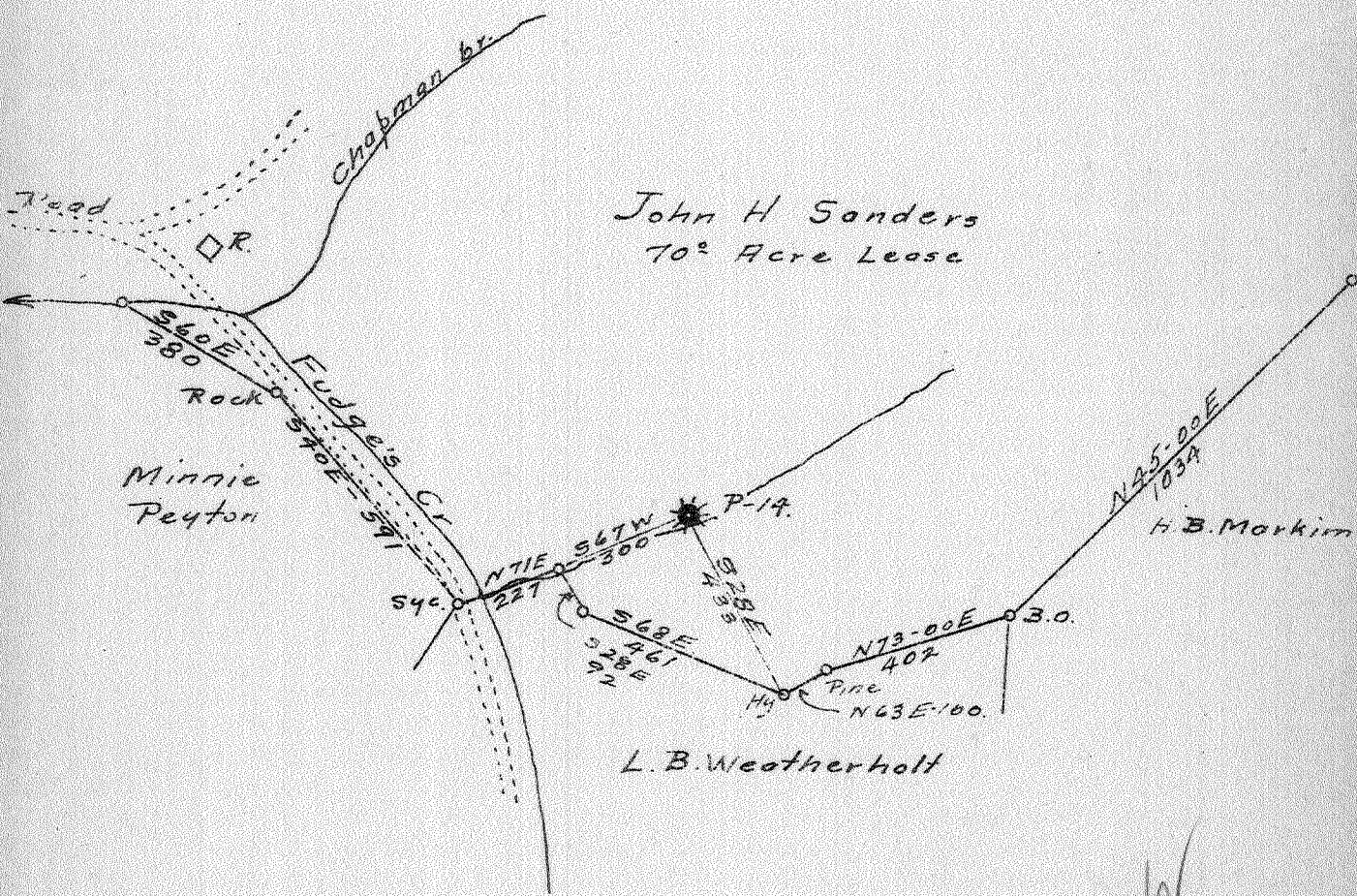
2

3

Longitude 82 10

Ben Chapman

John H Sanders
70[±] Acre Lease



0.37 W
1.45 R

Abandonment Loc.

Company HAMILTON GAS CORP.
 Address CHARLESTON, W.VA.
 Farm John H. Sanders
 Tract 1 Acres 70 Lease No. LWC-25
 Well (Farm) No. 1 Serial No. P-14
 Elevation (Spirit Level) 691.96
 Quadrangle Milton
 County CABELL District Grant
 Engineer Towasel Combs
 Engineer's Registration No. Ky-465
 File No. _____ Drawing No. _____
 Date Sept. 12, 1940 Scale 1 in = 400 ft

STATE OF WEST VIRGINIA
 DEPARTMENT OF MINES
 OIL AND GAS DIVISION
 CHARLESTON

WELL LOCATION MAP
 FILE NO. CAB-27A

+ Denotes location of well on United States Topographic Maps, scale 1 to 62,500, latitude and longitude lines being represented by border lines as shown.

- Denotes one inch spaces on border line of original tracing.