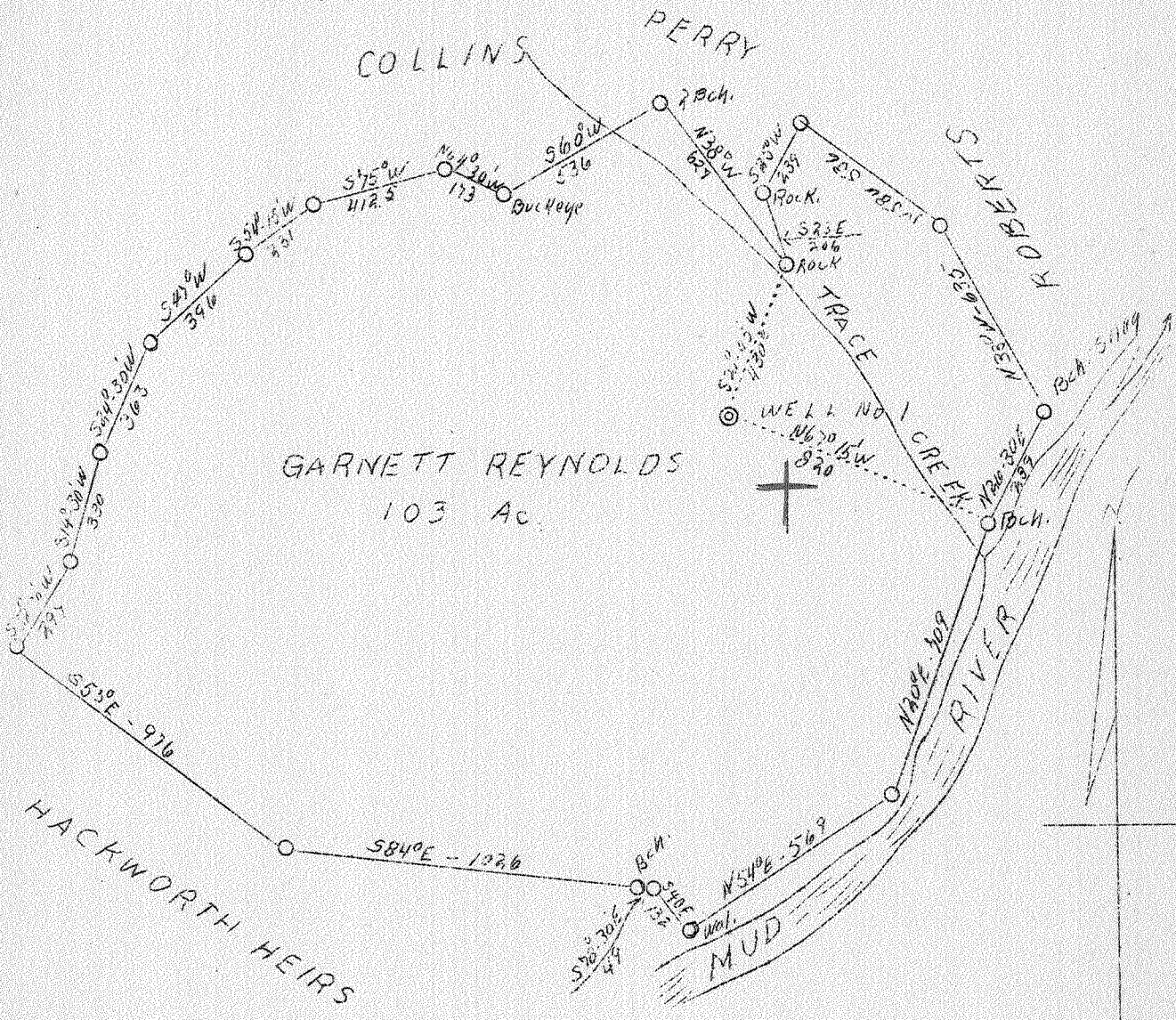


LATITUDE 38° 25'

LONGITUDE 82° 05'



GARNETT REYNOLDS
103 AC.

2.6 W
4.1 Q

ABD

OCT 10 1938

Company	Sweetland Land & Mineral Co.
Address	Hamlin, W. Va.
Farm	Garnett Reynolds
Tract	One
Acres	103
Well (Farm) No.	One
Elevation (SP)	710
Quadrangle	Milton
County	Cabell
District	Grant
Engineer	S. V. Haworth
Eng. Reg. No.	224
Date	Sept. 28, 1938
Scale	1" = 500'

STATE OF WEST VIRGINIA
Department of Mines
OIL & GAS DIVISION
Charleston

WELL LOCATION MAP
File No. Cab-17-A

x Denotes location of well on U. S. Topographic Maps, scale 1 to 62,500, latitude and longitude lines being represented by border lines as shown.

- Denotes one inch spaces on border line of original tracing.