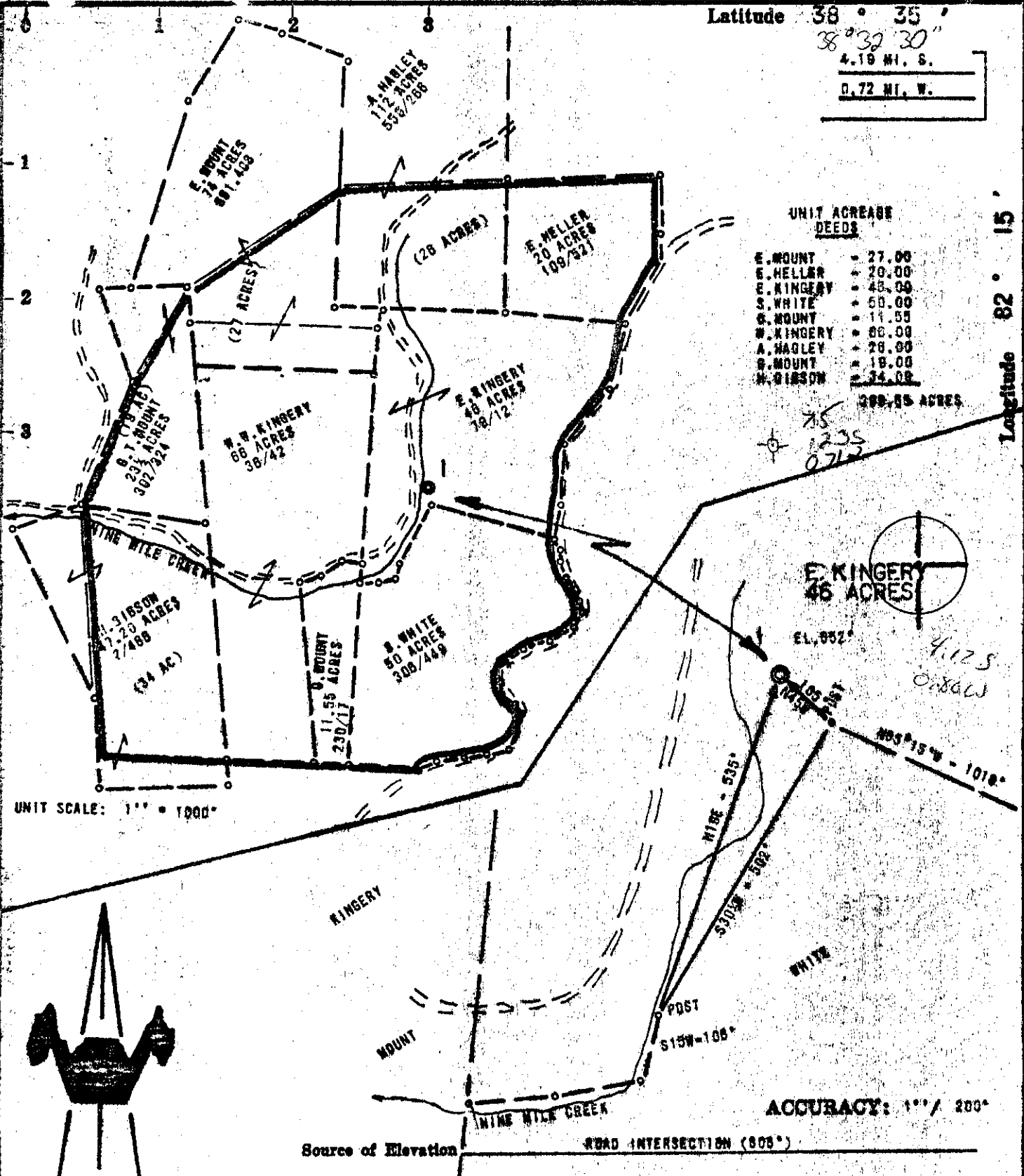


3/1/71 LCN
P.P. 5/14/71 CEN

Latitude 38° 35'
38° 32' 30"
4.18 MI. S.
0.72 MI. W.



UNIT ACREAGE DEEDS

E. MOUNT	74.00
E. HELLER	20.00
E. KINGERY	46.00
S. WHITE	50.00
D. MOUNT	11.55
W. KINGERY	66.00
A. HAGLEY	28.00
S. MOUNT	18.00
W. GIBSON	24.00
TOTAL	299.55 ACRES

I, the undersigned, hereby certify that this map is correct to the best of my knowledge and belief and shows all the information required by paragraph 6 of the rules and regulations of the oil and gas section of the mining laws of West Virginia.

Drill Deeper

Abandonment issued 7-30-71

Fracture

Redrill

Company CYCLOPS CORPORATION

Address PITTSBURGH, PENN.

Farm E. KINGERY UNIT (299.55 AC.)

Tract Acres 46 Lease No. _____

Well (Farm) No. 1 Serial No. _____

Elevation (Spirit Level) 652'

Quadrangle ATHALIA AC SE

County CABELL District UNION

Engineer CHET WATERMAN

Engineer's Registration No. 3788

File No. 71003-51 Drawing No. _____

Date 2/23/71 Scale 1" = 200'

STATE OF WEST VIRGINIA
DEPARTMENT OF MINES
OIL AND GAS DIVISION
CHARLESTON

WELL LOCATION MAP
FILE NO. CAB-537-P

+ Denotes location of well on United States Topographic Maps, scale 1 to 62,500, latitude and longitude lines being represented by border lines as shown.

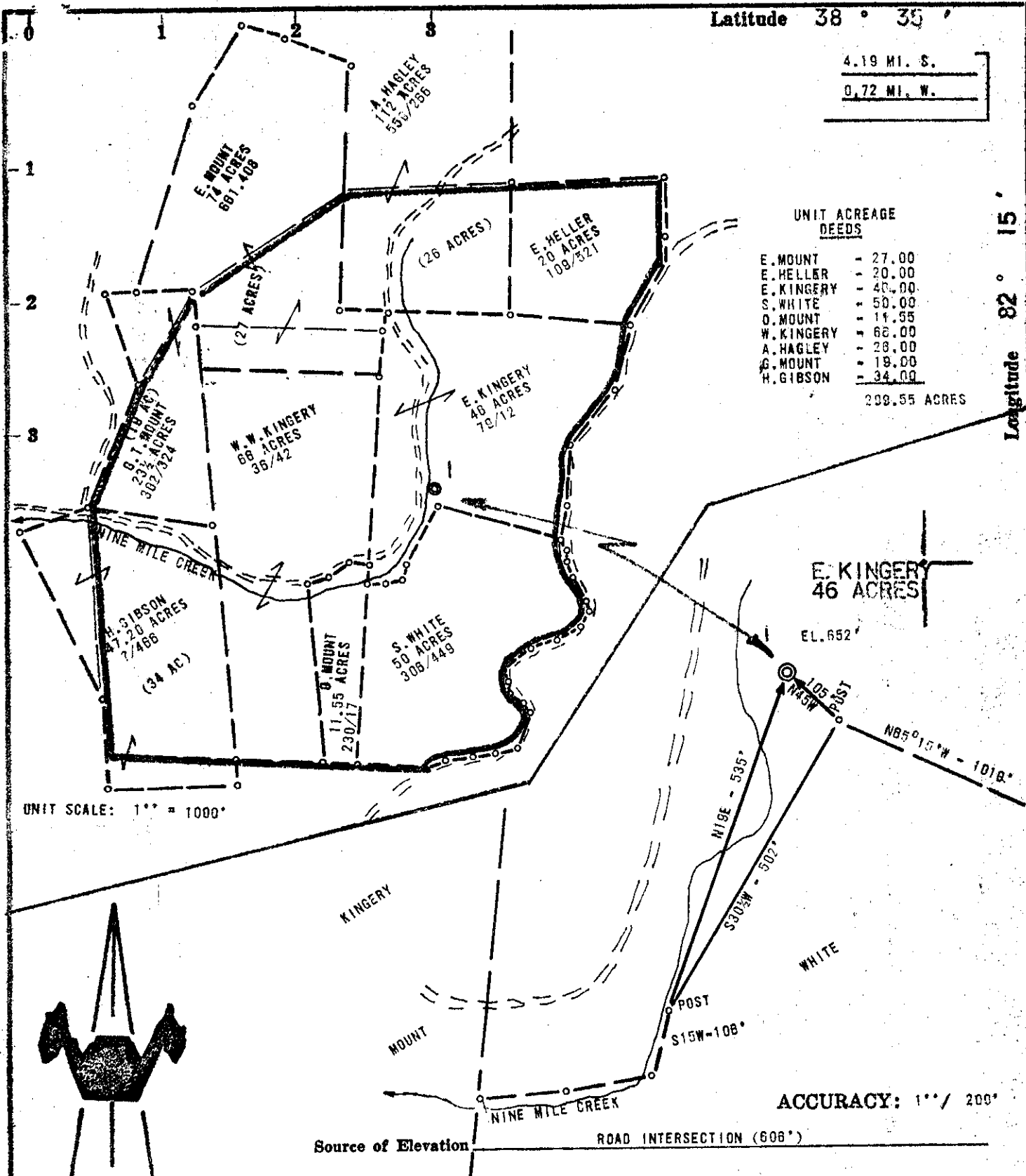
— Denotes one inch spaces on border line of original tracing.

Deep well (Basement)

Latitude 38° 35'

4.19 MI. S.

0.72 MI. W.



UNIT ACREAGE DEEDS

E. MOUNT	- 27.00
E. HELLER	- 20.00
E. KINGERY	- 40.00
S. WHITE	- 50.00
D. MOUNT	- 11.55
W. KINGERY	- 68.00
A. HAGLEY	- 28.00
H. MOUNT	- 19.00
H. GIBSON	- 34.00

299.55 ACRES

UNIT SCALE: 1" = 1000'



Source of Elevation

ROAD INTERSECTION (808')

ACCURACY: 1" / 200'

- New Location
- Drill Deeper
- Abandonment
- Fracture
- Redrill

I, the undersigned, hereby certify that this map is correct to the best of my knowledge and belief and shows all the information required by paragraph 6 of the rules and regulations of the oil and gas section of the mining laws of West Virginia.

Chet Waterman

Company CYCLOPS CORPORATION
 Address PITTSBURGH, PENN.
 Farm E. KINGERY UNIT (299.55 AC.)
 Tract Acres 46 Lease No. _____
 Well (Farm) No. 1 Serial No. _____
 Elevation (Spirit Level) 652'
 Quadrangle ATHALIA SE
 County CABELL District UNION
 Engineer CHET WATERMAN
 Engineer's Registration No. 3788
 File No. 71003-51 Drawing No. _____
 Date 2/23/71 Scale 1" = 200'

STATE OF WEST VIRGINIA
 DEPARTMENT OF MINES
 OIL AND GAS DIVISION
 CHARLESTON

WELL LOCATION MAP
 FILE NO. CAB-537

+ Denotes location of well on United States Topographic Maps, scale 1 to 62,500, latitude and longitude lines being represented by border lines as shown.

- Denotes one inch spaces on border line of original tracing.

WF 1-0

Deep Well (Basement)

MAR 29 1971



MAY 14 1971

STATE OF WEST VIRGINIA
DEPARTMENT OF MINES
OIL AND GAS WELLS DIVISION

- Rotary
- Spudder
- Cable Tools
- Storage

Quadrangle Athalia
Permit No. CAB-537

WELL RECORD

Oil or Gas Well DRY
(KIND)

Company Cyclops Corporation
Address 37 McMurray Rd., Pgh., Pa. 15241
Farm E. Kingery Unit Acres 299.55
Location (waters) Nine Mile Creek
Well No. 1 Elev. 652 Gr.
District Union County Cabell
The surface of tract is owned in fee by E. Kingery
Address Lesage, W. Va.
Mineral rights are owned by E. Kingery
Address Same
Drilling commenced April 2, 1971
Drilling completed May 3, 1971
Date Shot From To
With
Open Flow /10ths Water in Inch
/10ths Merc. in Inch
Volume Cu. Ft.
Rock Pressure lbs. hrs.
Oil bbls., 1st 24 hrs.
WELL ACIDIZED (DETAILS)
WELL FRACTURED (DETAILS)

Casing and Tubing	Used in Drilling	Left in Well	Packers
Size 24"	25'	25'	
16.	162'	162'	Kind of Packer
13.			
11 3/4"	2240'	2240'	Size of
8 5/8"	5770'	2770'	
6 3/4"			Depth set
5 3/16"			
4 1/2"			
3.			Perf. top
2.			Perf. bottom
Liners Used			Perf. top
			Perf. bottom

Attach copy of cementing record. See cementing records
CASING CEMENTED SIZE No. Ft. Date
Amount of cement used (bags) see cementing records
Name of Service Co. Dowell
COAL WAS ENCOUNTERED AT None FEET INCHES
FEET INCHES FEET INCHES
FEET INCHES FEET INCHES

RESULT AFTER TREATMENT (Initial open Flow or bbls.)
ROCK PRESSURE AFTER TREATMENT HOURS
Fresh Water 100 Feet 1270'
Salt Water 6714', 7148', 7572'
Producing Sand Depth

Formation	Color	Hard or Soft	Top	Bottom	Oil, Gas or Water	Depth	Remarks
Clay & Sandstone	Brown to Red	Soft	0	184	Fresh Water	100'	
Shale	Gray to gray green	Soft	184	228			
Sandstone	Gray to ochre	Soft	228	244			
Shale with interbedded Sandstone	Gray to green	Soft	244	470			
Sandstone	White	Medium	470	506			
Shale	Gray	Medium	506	525			
Shale with Sandstone streaks	Gray	Medium	525	570			
Shale, Clayey, Sandstone	Gray to Tan	Medium	570	635			
Sandstone	Gray to graybrown	Medium	635	685			
Shale, silty	Gray	Soft	685	802			
Sandstone, Clayey	White	Medium	802	828			

(over)

AUG 6 1971

R-2220

operator
depth

Formation	Color	Hard or Soft	Top 3	Bottom	Oil, Gas or Water	Depth Found	Remarks	
Shale, Sandstone stringers silty	Gray to tan	Hard	828	1150				
Sandstone	White	Hard	1150	1270	Salt Water	1270'	Maxton	
Shale	Gray	Medium	1270	1292				
Limestone Dolomite	Lt. Brown to white	Hard	1292	1400		1292'	Greenbrier	
Limestone	Lt. brown to white	Medium	1400	1450	SSO	1410'		
Sandstone	Lt. gray	Medium	1450	1596	SSG	1475'	Big Injun	
Shale	Gray	Soft	1596	1630				
Sandstone, shale stringers	White to Gray	Medium	1630	1822				
Shale, Sandstone stringers	Gray	Medium	1822	2026		1822'	Sunbury	
Sandstone	White	Medium	2026	2032	SSG	2026'	Berea	
Shale, Siltstone	Lt. brown to gray	Soft	2032	3332				
Limestone	Gray to lt. buff	Medium	3332	3510		3332'	Onondaga	
Dolomite	Green to Gray	Medium	3510	3857		(Salina)		
Dolomite	Lt. gray buff	Medium	3857	4076	Hard?	3867'	Williamsport	
Shale, silty	Brick red pale gray	Soft	4076	4397		4076'	Rose Hill	
Sandstone	White	Hard	4397	4428	MCC-4337-4428	4396'	Clinton	
Shale	red to black	Medium	4428	4653		4429'	Queenston shale (Junata)	
Shale with limestone stringers	Gray to lt. gray	Medium	4653	4886		4695'	Marathon	
Limestone, Shale	Gray, tan white, green	Medium	4886	5715				
Limestone	Gray, tan buff white	Medium	5715	6552		5714'	Trenton	
Sandstone	White	Medium	6552	6608	SSG	6570'	STONES RIVER (WELLS)	
Dolomite, some sandy	Lt. gray buff, tan	Medium	6608	7141	SSW	6565'	St. Peter	
Sandstone & Dolomite	Gray, White	Hard	7141	7300	SG, SW	6580'	Beekmantown	
Dolomite, Shale	White gray	Hard	7300	8000	SSG, SSO, SW	7136'	7148'	Rose Run
Shale	Gray dk. gray	Hard	8000	8075		7572'	8007'	Copper Ridge
Dolomite, Shale	Gray White	Hard	8075	8410		8077'	8077'	Conasauga
Dolomite, Sandstone	White, gray, buff	Hard	8410	8490		8409'	8410'	Tomstown
Quartz? Quartz *	Gray, buff Gray pinkish	Hard	8490	8516	Basement	8480'	8490'	Mt. Simon
		Hard	8516	8552	BASINENT	8480'	8516'	Granite wash Granite

Final OG-10 will be submitted upon completion Date May 12, 19 71
 APPROVED Cyclops Corporation, Owner

* GRANITE WASH - MATERIAL ERODED FROM OUTCROPS OF GRANITIC ROCKS AND RECONSOLIDATED TO FORM A ROCK HAVING APPROXIMATELY THE SAME MAJOR MINERAL CONSTITUENTS AS THE ORIGINAL ROCK. (Glossary of Geology, 1972)

By Harold and Bertie Agent
 (Title) SL Bartka

