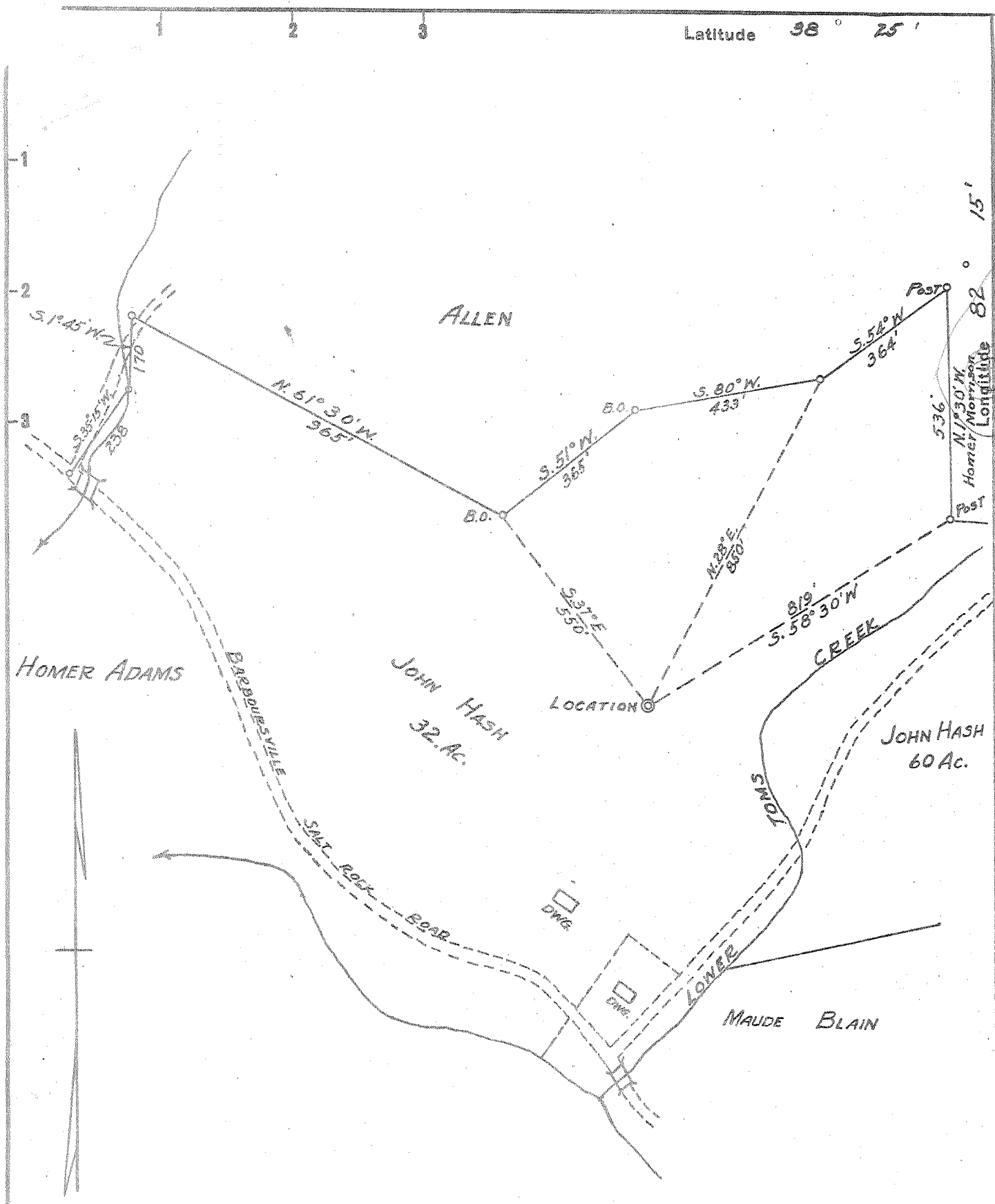


M

Latitude 38° 25'



- New Location...
- Drill Deeper.....
- Abandonment.....

| | | |
|-----------------------------|---------------------------|--------------------------|
| Company | <u>F. M. HICKS</u> | |
| Address | <u>HUNTINGTON, W. VA.</u> | |
| Farm | <u>JOHN HASH</u> | |
| Tract | Acres <u>92</u> | Lease No. _____ |
| Well (Farm) No. | <u>1</u> | Serial No. _____ |
| Elevation (Spirit Level) | <u>585</u> | |
| Quadrangle | <u>GUYANDOT FC</u> | |
| County | <u>CABELL</u> | District <u>Mc COMAS</u> |
| Engineer | <u>G. B. Ewing</u> | |
| Engineer's Registration No. | <u>309</u> | |
| File No. | Drawing No. _____ | |
| Date | <u>12-28-55</u> | Scale <u>1" = 300'</u> |

STATE OF WEST VIRGINIA
DEPARTMENT OF MINES
OIL AND GAS DIVISION
CHARLESTON

WELL LOCATION MAP
FILE NO. CAB-488

+ Denotes location of well on United States Topographic Maps, scale 1 to 62,500, latitude and longitude lines being represented by border lines as shown.

- Denotes one inch spaces on border line of original tracing.

6-46 216

✓



STATE OF WEST VIRGINIA
DEPARTMENT OF MINES
OIL AND GAS DIVISION

WELL RECORD

Quadrangle Guyandot
Permit No. Cab-488

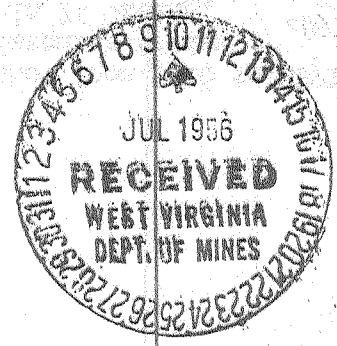
Oil or Gas Well Gas
(KIND)

Company F. M. Hicks & etal. Hash Gas Co.
Address 141 Gallaher St. Huntington, W. Va.
Farm John Hash Acres 92
Location (waters) Toms Creek
Well No. one Elev. 585
District McComas County Cabell
The surface of tract is owned in fee by _____
Address _____
Mineral rights are owned by _____
Address _____
Drilling commenced Feb. 18, 1956
Drilling completed May 26, 1956
Date Shot 5/26/56 From 3,326 To 2,891
With 3,000# Hercules Powder
Open Flow 4 /10ths Water in 2" Inch
1 /10ths Merc. in _____ Inch
Volume 84,000 Cu. Ft.
Rock Pressure 345# lbs. _____ hrs.
Oil _____ bbls., 1st 24 hrs.
Fresh water 90' feet 580' feet
Salt water 580' feet 702' feet

| Casing and Tubing | Used in Drilling | Left in Well | Packers |
|-------------------|----------------------------|-------------------|----------------|
| Size | | | |
| 18 | | | Kind of Packer |
| 13 | | | |
| 10 | | | Size of |
| 8 1/4 | <u>506'</u> | <u>pulled out</u> | |
| 6 3/4 | <u>1,773'</u> | <u>1,773'</u> | Depth set |
| 5 3/16 | <u>114'</u> | <u>used for</u> | |
| 3 | <u>liner in Berea sand</u> | | Perf. top |
| 2 | | | Perf. bottom |
| Liners Used | | | Perf. top |
| | | | Perf. bottom |

CASING CEMENTED _____ SIZE _____ No. Ft. _____ Date _____
COAL WAS ENCOUNTERED AT _____ FEET _____ INCHES
_____ FEET _____ INCHES FEET _____ INCHES
_____ FEET _____ INCHES FEET _____ INCHES

| Formation | Color | Hard or Soft | Top | Bottom | Oil, Gas or Water | Depth Found | Remarks |
|----------------|-------|--------------|------|--------|-------------------|-------------|---------|
| Surface | | | 0 | 25 | | | |
| Grey Mud | | | 25 | 35 | | | |
| Slate | | | 35 | 125 | | | |
| Red Rock | | | 125 | 135 | | | |
| Slate | | | 135 | 325 | | | |
| Sand | | | 325 | 360 | | | |
| Slate | | | 360 | 375 | | | |
| Sand | | | 375 | 400 | | | |
| Slate | | | 400 | 520 | | | |
| Sand | | | 520 | 595 | | | |
| Slate | | | 595 | 642 | | | |
| Slate Sand | | | 642 | 692 | | | |
| Sand Slate | | | 692 | 702 | | | |
| Sand | | | 702 | 752 | | | |
| Slate & Shells | | | 752 | 827 | | | |
| Sand | | | 827 | 890 | | | |
| Slate & Shells | | | 890 | 1025 | | | |
| Sand | | | 1025 | 1040 | | | |
| Slate & Shells | | | 1040 | 1115 | | | |
| Salt Sand | | | 1115 | 1145 | | | |
| Lime Shell | | | 1145 | 1165 | | | |
| Salt Sand | | | 1165 | 1185 | | | |
| Slate & Shells | | | 1185 | 1222 | | | |
| Salt Sand | | | 1222 | 1276 | | | |
| Slate & Shells | | | 1276 | 1310 | | | |
| Sand | | | 1310 | 1335 | | | |
| Slate | | | 1335 | 1365 | | | |
| Sand | | | 1365 | 1380 | | | |
| Slate | | | 1380 | 1385 | | | |
| Little Lime | | | 1385 | 1407 | | | |
| Break | | | 1407 | 1408 | | | |
| Big Lime | | | 1408 | 1580 | | | |



7" Casing set in top of Big Lime and Big Lime drilled dry, hole full water in Injun Sand, Casing pulled hole reamed and 7" Casing set through Injun Sand

| Formation | Color | Hard or Soft | Top / | Bottom | Oil, Gas or Water | Depth Found | Remarks |
|----------------|-------|--------------|-------|---------|---|-------------|---------|
| Slate | | | 1580 | 1585 | | | |
| Sandy Shell | | | 1585 | 1660 | | | |
| Injun Sand | | | 1660 | 1723 | hole full water at 1660 | | |
| Slate | | | 1723 | 1755 | | | |
| Lime Shell | | | 1755 | 1760 | | | |
| Slate & Shells | | | 1760 | 2040 | | | |
| Shell | | | 2040 | 2151 | | | |
| Slate & Shells | | | 2151 | 2205 | | | |
| Coffee Shale | | | 2205 | 2211 | | | |
| Berea Sand | | | 2211 | 2221 | Gas in Berea sand at 2211 to 2220, 4/10 | | |
| White slate | | | 2221 | 2246 | water 1" Sand shot with 400# powder | | |
| Shell | | | 2246 | 2350 | cleaned out and shot with 3,400# | | |
| Slate | | | 2350 | 2370 | powder, cleaned out and 5" liner set | | |
| Shell | | | 2370 | 2390 | from 2246 to 2131 | | |
| Slate | | | 2390 | 2570 | | | |
| Shell | | | 2570 | 2585 | | | |
| White Slate | | | 2585 | 2725 | | | |
| Brown Shale | | | 2725 | 2740 | | | |
| White Slate | | | 2740 | 2970 | | | |
| Brown Shale | | | 2970 | 3030 | | | |
| Shell | | | 3030 | 3038 | | | |
| White Slate | | | 3038 | 3075 | | | |
| Brown Shale | | | 3075 | 3185 | | | |
| White Slate | | | 3185 | 3200 | | | |
| Brown Shale | | | 3200 | 3320 | | | |
| White Slate | | | 3320 | 3326 TD | Brown Shale shot from 3326 to 2891 | | |
| | | | | | with 3,000# Hercules Powder | | |
| | | | | | Well shut in in 7" Casing, | | |
| | | | | | No tubing run, production when | | |
| | | | | | completed 4/10W 2" 84,000 | | |

Date July 5, 1956

APPROVED J. M. Hicks, Owner

By Partner (Title)