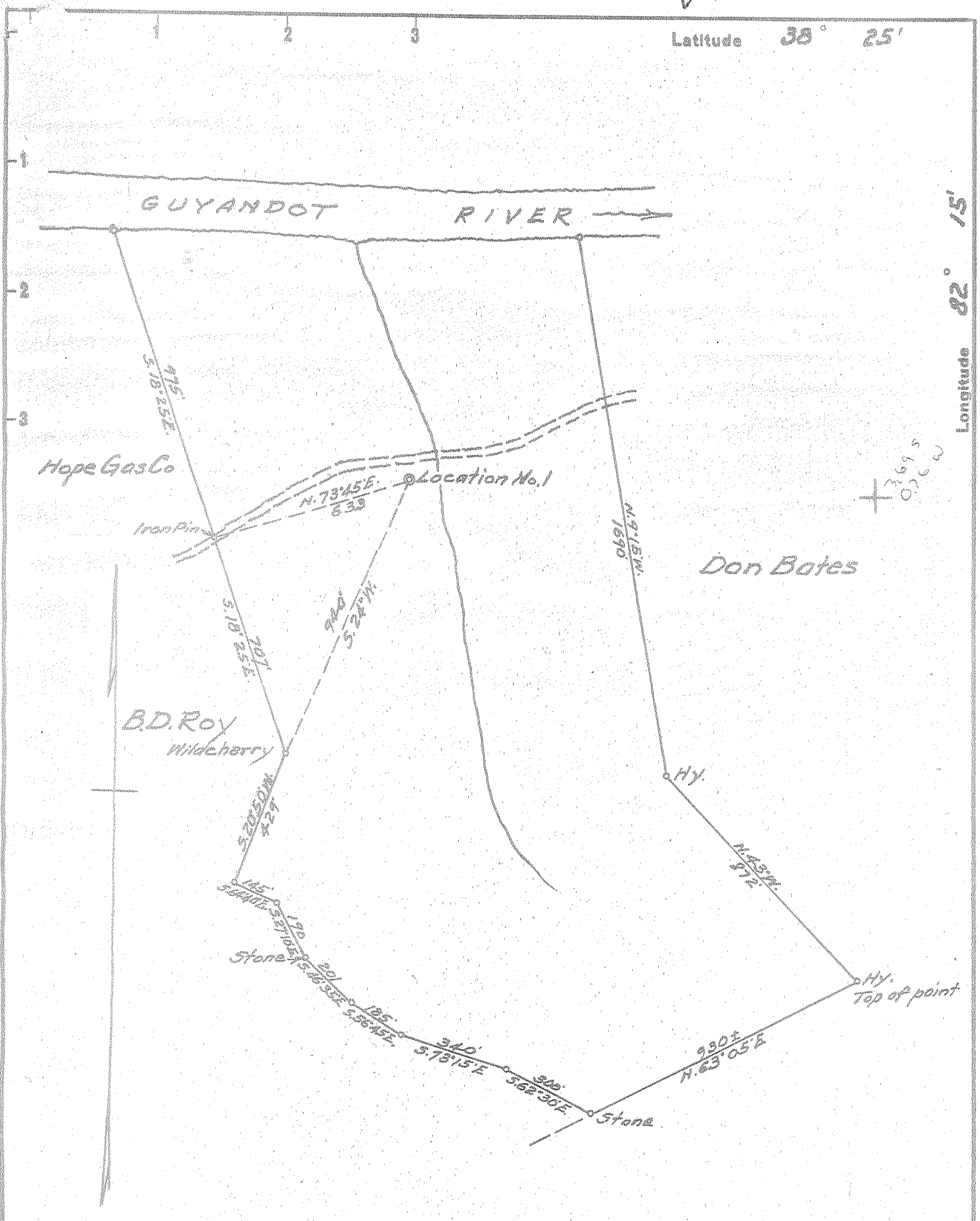


Latitude 38° 25'

Longitude 82° 15'



New Location
 Drill Deeper
 Abandonment

Company DENNIS M. ROY
 Address HUNTINGTON, W. VA.
 Farm LEAH PLYMALE
 Tract _____ Acres 80.45 Lease No. _____
 Well (Farm) No. 1 Serial No. _____
 Elevation (Spirit Level) 575
 Quadrangle GUYANDOT WC
 County CABELL District MCCOMAS
 Engineer H. E. Ewing
 Engineer's Registration No. 309
 File No. _____ Drawing No. _____
 Date 8-19-54 Scale 1" = 400'

STATE OF WEST VIRGINIA
 DEPARTMENT OF MINES
 OIL AND GAS DIVISION
 CHARLESTON

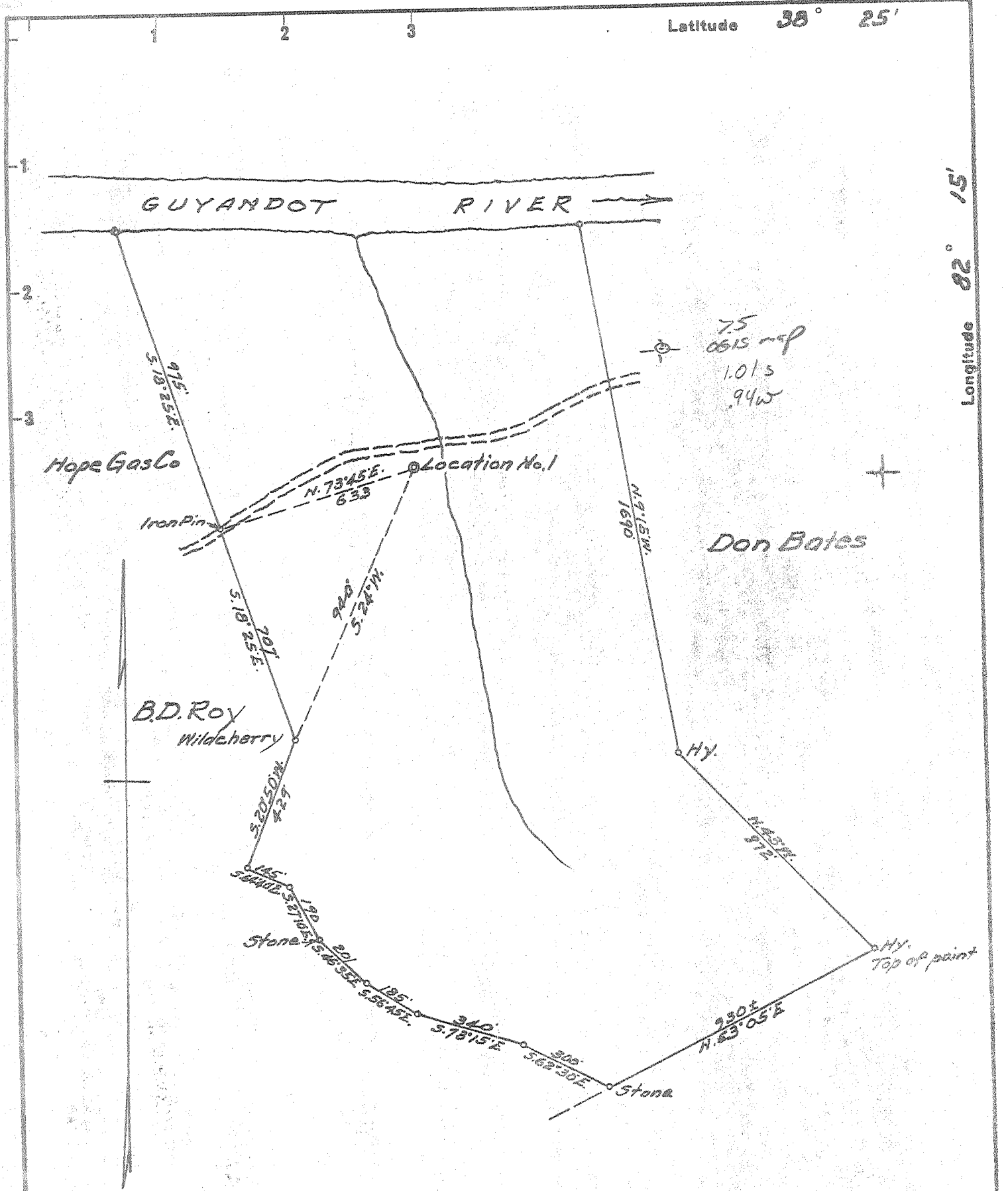
WELL LOCATION MAP
 FILE NO. CAB-480

+ Denotes location of well on United States Topographic Maps, scale 1 to 62,500; latitude and longitude lines being represented by border lines as shown.

- Denotes one inch spaces on border line of original tracing.

5-6-55

✓



New Location
 Drill Deeper
 Abandonment issued 6-8-71

Company Plymale Gas Co. - c/o Webster Myers
 Address 1612 - 7th Ave. HUNTINGTON, W.VA.
 Farm (LEAH) PLYMALE
 Tract _____ Acres 80.45 Lease No. _____
 Well (Farm) No. 1 Serial No. _____
 Elevation (Spirit Level) 575
 Quadrangle GUYANDOT EC
 County CABELL District MSCOMAS
 Engineer A. E. Ewing
 Engineer's Registration No. 309
 File No. _____ Drawing No. _____
 Date 8-19-54 Scale 1" = 400'

STATE OF WEST VIRGINIA
 DEPARTMENT OF MINES
 OIL AND GAS DIVISION
 CHARLESTON

WELL LOCATION MAP
 FILE NO. CAB-480-P

+ Denotes location of well on United States Topographic Maps, scale 1 to 62,500, latitude and longitude lines being represented by border lines as shown.

- Denotes one inch spaces on border line of original tracing.



STATE OF WEST VIRGINIA
DEPARTMENT OF MINES
OIL AND GAS DIVISION

WELL RECORD

Oil or Gas Well Gas
(KIND)

Quadrangle Haymarket
Permit No. CA 4490

Company PLYMOUTH GAS CO.
Address 925 Jefferson Ave. Hays, Mo.
Farm Leak Plymouth Acres 38
Location (waters) Guyana River
Well No. 1 Elev. 575'
District Madison County Cabel
The surface of tract is owned in fee by Glover Plymouth
Address _____
Mineral rights are owned by Glover Plymouth
Address _____
Drilling commenced Aug. 9, 1954
Drilling completed Oct. 31, 1954
Date Shot Oct. 31 From 2171 To 2196
With 3800 lbs Hercules Powder
Open Flow 14/10ths Water in 2' Inch
1/10ths Merc. in Inch
Volume 184-000 Cu. Ft.
Rock Pressure 500 lbs. 3 days hrs.
Oil _____ bbls., 1st 24 hrs.
Fresh water _____ feet _____ feet
Salt water _____ feet _____ feet

Casing and Tubing	Used in Drilling	Left in Well	Packers
Size			
16			Kind of Packer _____
18			
10	<u>32'</u>	<u>32'</u>	Size of _____
8 3/4	<u>374'</u>		
6	<u>1744'</u>	<u>1744'</u>	Depth set _____
5 3/16			
3			Perf. top _____
2			Perf. bottom _____
Liners Used			Perf. top _____
			Perf. bottom _____

CASING CEMENTED	SIZE	No. Ft.	Date
COAL WAS ENCOUNTERED AT _____ FEET _____ INCHES			
	FEET	INCHES	FEET INCHES
	FEET	INCHES	FEET INCHES

Formation	Color	Hard or Soft	Top	Bottom	Oil, Gas or Water	Depth Found	Remarks
Surface			0	15			
slate			15	25			
			25	50			
sand			50	100			
slate			100	125			
sand			125	200			
slate			200	215			
Red rock			215	240			
slate			240	250			
Red rock			250	275			
sand			275	400			
slate			400	450			
lime			450	500			
slate			500	650			
sand			650	700			
slate			700	1000			
slate & shales			1000	1250			
			1250	1390			
salt band			1390	1650			
lime			1650	1700			
lime			1700	1750			
myun. sand			1750	2171			
slate & shales			2171	2193			
slate & shells							
total depth			2196				

