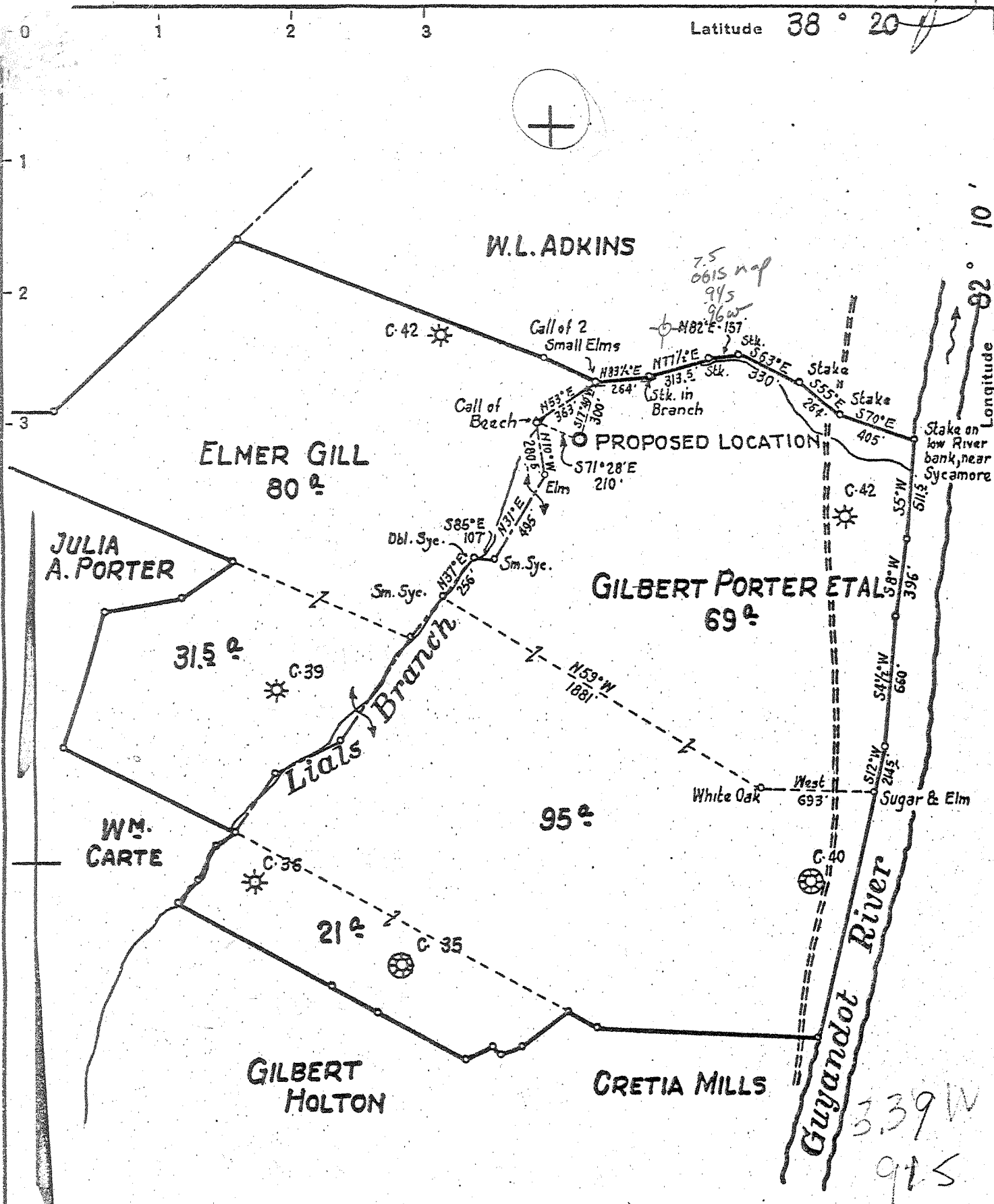


Latitude 38° 20'



New Location...
 Drill Deeper.....
 Abandonment.....

Company	WEST VIRGINIA GAS CORP.	
Address	P.O. BOX 1433 CHARLESTON, W.VA.	
Farm	GILBERT PORTER	
Tract	Acres 296.5	Lease No. 102-103
Well (Farm) No.	5	Serial No. 576
Elevation (Spirit Level)	602.5	
Quadrangle	MILTON - S.W.	
County	CABELL	District M ^o COMAS
Engineer	L.B. DORSEY	
Engineer's Registration No.	402	
File No.	Drawing No.	
Date	JULY 30, 1953 Scale 1" = 660'	

STATE OF WEST VIRGINIA
 DEPARTMENT OF MINES
 OIL AND GAS DIVISION
 CHARLESTON

WELL LOCATION MAP
 FILE NO. CAB-464

+ Denotes location of well on United States Topographic Maps, scale 1 to 62,500, latitude and longitude lines being represented by border lines as shown.

- Denotes one inch spaces on border line of original tracing.

3-0 200

Samples (MI 75-E) (3357-4770) Clinton Deep Well

Little Lime	1075-1095
Big Lime	1095-1262
Br Sh	1865-1870
Berea	1876-1884
Coniferous lime	3357-3482
Ordinary	3482-3542
Big Six	4164-4190
Clinton Sand	4558-4577
Red med. sd	4670-4775

STATE OF WEST VIRGINIA
DEPARTMENT OF MINES
OIL AND GAS DIVISION 5

LILTON QUADRANGLE

WELL RECORD

Oil or Gas Well Dry Hole

Permit No. Cab. LSH

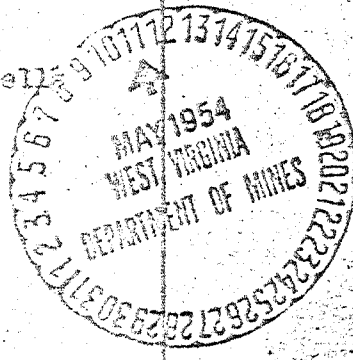
Company WEST VIRGINIA GAS CORPORATION
 Address P. O. Box 1433, Charleston, W. Va.
 Farm 6100-ROCK No. 5 Acres 296.5
 Location (waters) Lials Branch at Guyandot River
 Well No. 575 Elev. 602.6
 District McConnet County Cabell
 The surface of tract is owned in fee by Gilbert Porter, et al
 Address Salt Rock, W. Va.
 Mineral rights are owned by S a m a
 Address _____
 Drilling commenced Sept. 16, 1953
 Drilling completed March 13, 1954
 Date Shot _____ From _____ To _____
 With _____

Casing and Tubing	Used in Drilling	Left in Well	Packers
Size			
18	61'	61'	Kind of Packers
18-3/11"	1099		
10-3/11"	1400	1400	Size of
8 1/2	3320	3320	
4 1/2- 7"	4486	4486	Depth set
5 3/16			
2			Perf. top
2			Perf. bottom
Liners Used			Perf. top
			Perf. bottom

Open Flow _____ /10ths Water in _____ Inch
 _____ /10ths Merc. in _____ Inch
 Volume _____ Cu. Ft.
 Rock Pressure _____ lbs. _____ hrs.
 Oil _____ bbls., 1st 24 hrs.
 Fresh water 65 feet Hole Full feet
 Salt water 745 feet _____ feet

CASING CEMENTED 3-5/8" SIZE 10 Bags No. Ft. _____
7" Casing - 20 Bags
 COAL WAS ENCOUNTERED AT _____ FEET _____ INCHES
 _____ FEET _____ INCHES
 _____ FEET _____ INCHES

Formation	Color	Hard or Soft	Top	Bottom	Oil, Gas or Water	Depth Found	Remarks
Surface			0	5			
Gravel			5	12			
Blue Mud			12	18			
Sand			18	40			
Mud			40	50			
Sand			50	115	Water	61 65	16" Casing Hole Full
Blue Slate			115	120			
Sand			120	125			
White Slate			125	135			
Sand			135	280			
Blue Slate			280	295			
Sand			295	337			
White Slate			337	415			
Sand			415	420			
Slate			420	642			
SAIT SAND			642	960	White Sand	745	
Slate			920	932			
Red Rock			932	945			
Slate & Shells			945	1024			
Black Lime Shells			1024	1050			
Slate			1050	1075			
LITTLE LIME			1075	1095		1099	Run 1 1/2" Cag. - Pul
SILT			1095	1262	Show Oil	1099	Halliburton S.L.M.
Spall-Slate			1262	1317	" "	1215	
BROWN			1317	1390		1316	
Slate			1390	1396		1317	Halliburton S.L.M.
Lime Shells			1396	1424	Gas	1337	3/10 W. -
Blue Slate			1424	1865			
Brown Shale			1865	1870			
SILT			1870	1884		1875	Run Measuring Lin
Slate and S			1884	2765			
BROWN SHALE			2765	2825		2779	Run Measuring Lin
White slate			2825	2835			
Brown Shale			2835	2935			
White Slate			2935	2950			
BROWN SHALE			2950	3018			
White Slate			3018	3260			
BROWN SHALE			3260	3357		3361	Halliburton S.L.M.



6801.06

Formation	Color	Hard or Soft	Top	Bottom	Oil, Gas or Water	Depth Found	Notes
CONIFEROUS LIME			3357	3482		3300	8-3/4" Casing
WISKEY SAND			3482	3542	Pick up	7" Transition	in 6" Csg.
White Lime			3542	3552	Show Gas	3420-3425	
" Sand			3552	3562	" "	3547-3557	
Black Lime			3562	3670			
White Lime			3670	3685			
Black Lime			3685	4164			
NO SIX			4164	4190		4168	Halliburton S.L.M.
Black Slate			4190	4200			
Red Rock			4200	4340			
Blue Slate			4340	4430			
Red Rock			4430	4485			
Lime Shells			4485	4500		4486	7" Casing Hallib. S.L.
Red Rock			4500	4510			
Slate and Shells			4510	4558			
CLINTON SAND			4558	4577		4559	Halliburton S.L.
Slate & Shells			4577	4670	Show Gas	4670-4676	Burn 1" high 1/4" pipe
RED MEDINA			4670	4775			
Red Rock			4775	4790			

Total Depth

4790

3357

Sulphur Gas - 3547-3557 - Test by International Nickel Co. Show - 8 grains sulphur per 100 after treating with lime. Wire line lasted 10 days. New Wire Line treated with a coat of No-Heave every 24 hours, also put in 1 bag of Slack Lime every 4 hours.

Bit stopped at 4155. Started back to drilling after reaming hole to 4176'.

Halliburton Steel Line at Sand Line Measurement
Difference

4168'
4139
29

3482
3357
125

354
3782
60

Geology Depths

Samp. Studies

CONIF - 3492-4150
KEEPER - 4150-4180
SHELL - 4180-4506
TERR - 4556-4670
JUNT - 4670

ONBG - 3357-3410
HDBG - 3410-3510
SALINA - 3510
KEEPER - 4153-4192
RSHL - 4192-4556
TERR - 4556-4592(?)
JUNT - 4592(?)

3357 3482 4558
603 603 603
-2754 -2879 -3955

Date March 18, 1955

APPROVED WEST VIRGINIA GAS CORPORATION

By _____ (Title)