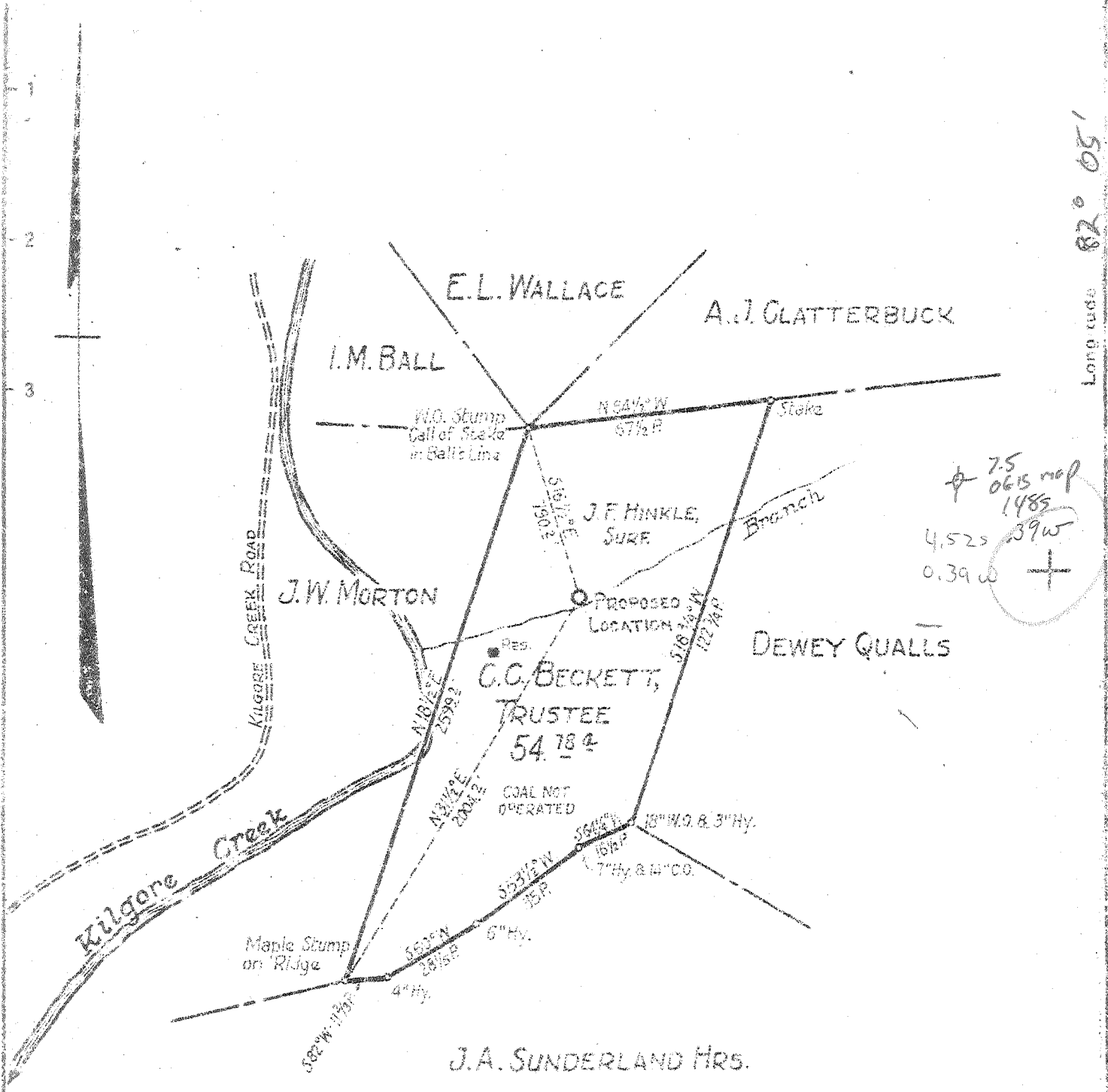


Latitude 38° 27' 30"

Longitude 82° 05'



New Location
 Drill Deeper
 Abandonment

Company WEST VIRGINIA GAS CORPORATION
 Address P.O. Box 1433 CHARLESTON 25, W.VA.
 Farm C.C. BECKETT, TRUSTEE ET AL
 Tract _____ Acres 54.78 Lease No. 960 & 966
 Well (Farm) No. 2 Serial No. 536
 Elevation (Spirit Level) 633.4 (GROUND)
 Quadrangle MILTON N.E. 2 S-4.42 W-0A2
 County CABELL District GRANT
 Engineer W. S. GRAVELY
 Engineer's Registration No. _____
 File No. _____ Drawing No. _____
 Date JAN. 10, 1946. Scale 1" = 660'

STATE OF WEST VIRGINIA
 DEPARTMENT OF MINES
 OIL AND GAS DIVISION
 CHARLESTON

WELL LOCATION MAP
 FILE NO. CAB-436

+ Denotes location of well on United States Topographic Maps, scale 1 to 62,500, latitude and longitude lines being represented by border lines as shown.
 - Denotes one inch spaces on border line of original tracing

WEST VIRGINIA DEPARTMENT OF MINES
OIL & GAS DIVISION
W E L L R E C O R D

Permit No. Cab 436

Gas Well
CASING & TUBING

Milton Quad.

Company

West Virginia Gas Corp.

Address

P.O. Box 1433, Charleston 25, W.Va. 13

24 24

Farm

C. C. Beckett Trustee et al Acres 54 10

377'4 88'4

Location

Kilgore Creek

8½ 1489'2

Well No.

2 -Ser. 536. Elev. 633.4 Gr

7 1824' 1824'

District

Grant Cabell County

Surface

J.F. Hinkle, Milton, W.Va.

Mineral

C. C. Beckett Trustee et al

Milton, W.Va.

Commenced

Feb. 2, 1946

Completed

April 9, 1946

Date shot

4-5-46 Depth 2201 to 2231

4-8-46 1st shot 342# Gelatin

Volume

179,000 C.F.

Rock Pressure

445 lbs. 48 hrs.

Fresh Water

60' 2 bbl. per hr.; 490' 2 blr.

605 H.F.

Salt Water

1725' 5 bbls.

Red Rock	0	20	Brown Shale	2200	2205
Sand	20	25	Berea Grit	2205	2232
Red Rock	25	60	TOTAL DEPTH		2232
Sand	60	70			
Red Rock	70	80	Gas 2208' 10/10 W 1" 33 M		
Sand	80	125			
Slate	125	130	Shot 4-5-46 from 2201 to 2231		
Red Rock	130	155	342# gelatin		
White Mud	155	170	B.S. 27 M 1 hr. A.S. 8/10 W in 2" 119 M		
Red Rock	170	200	Shot 4-8-46 from 2201 to 2231 2000#		
Lime	200	205	gelatin		
White Mud	205	225	B.S. 84 M 30 Min. A.S. 26/10 W in 3"		
Red Rock	225	275	484 MCF 1 hr. A.S. 22/10 W in 3" 445 M		
Sand	275	295	24 hr. A.S. 18/10 W in 2" 179 M		
White Slate	295	300	48 hr. R.P. 445#		
Red Rock	300	310			
White Slate	310	315			
Red Rock	315	340			
Sand	340	345			
Slate	345	350			
Red Rock	350	365			
White Slate	365	380			
Sand	380	400			
Slate	400	450			
Sand	450	480			
Slate	480	485			
Sand	485	520			
Slate	520	570			
Lime Hard	570	580			
Sand	580	630			
Red Rock	630	635			
Lime	635	665			
Slate & Shells	665	860			
Lime	860	890			
Slate	890	945			
Lime Hard	945	965			
Slate & Shells	965	1065			
White Slate	1065	1070			
Lime	1070	1075			
1st Salt Sand	1075	1340			
Blue Mud	1340	1345			
Lime Hard	1345	1370			
2nd Salt Sand	1370	1405			
Slate	1405	1435			
Maxon Sand	1435	1465			
Slate	1465	1470			
Big Lime	1470	1630	Gsg. point 1491' SIM		
Keener Sand	1630	1675			
Slate	1675	1700			
Injun Sand	1700	1785			
Slate Shell	1785	2200			