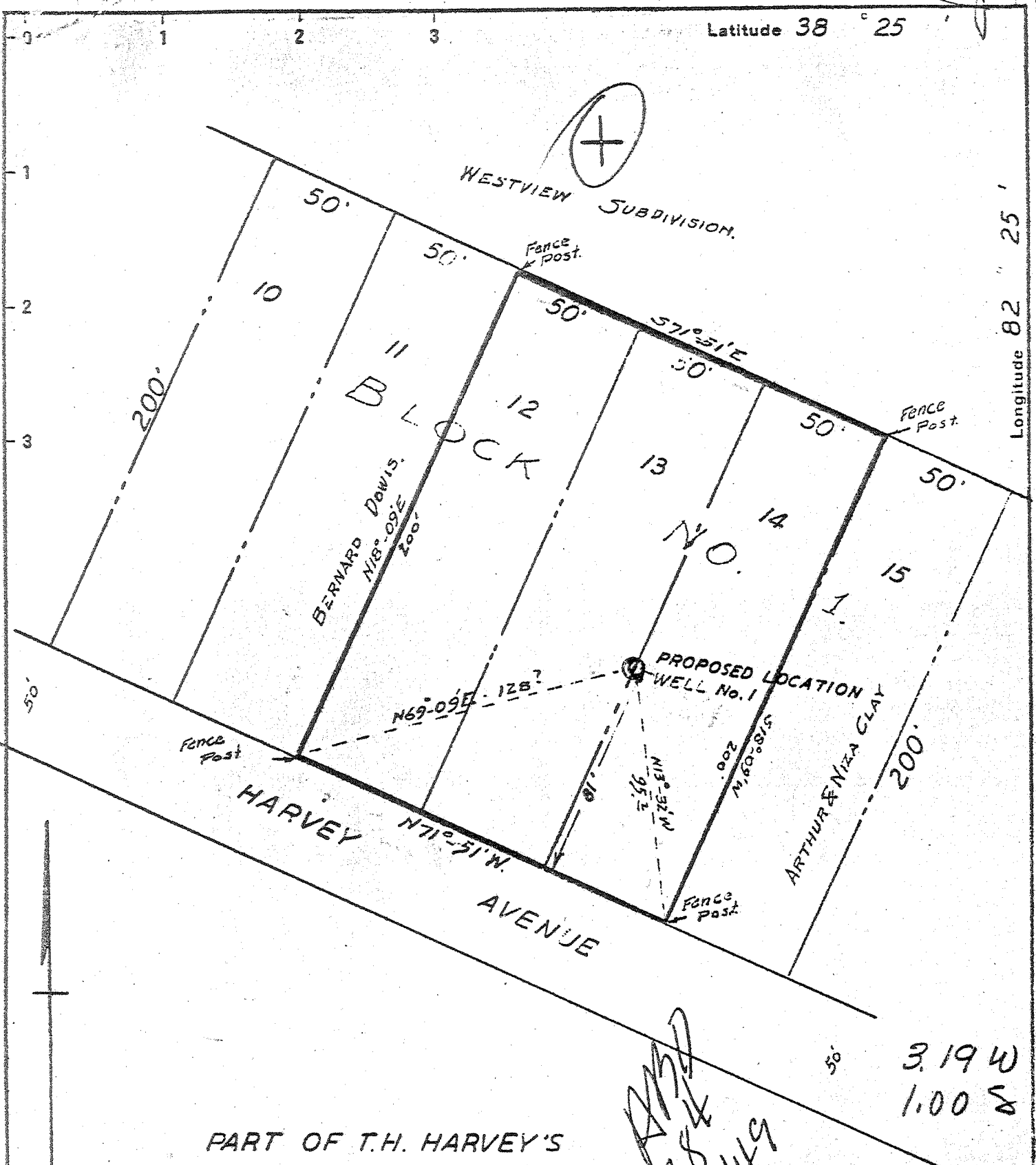


Latitude 38° 25'

Longitude 82° 25'



PART OF T.H. HARVEY'S
FOUR POLE ADDITION No. 1
TO CENTRAL CITY

Handwritten:
384
149

Handwritten:
3.19 W
1.00 S

New Location
Drill Deeper
Abandonment

Handwritten: see Vol 1 of 39

NOTE:

THERE ARE NO PERMANENT LAND MARKS IN THIS SUBDIVISION OTHER THAN THOSE SHOWN.

Company R. J. PETRIE
 Address HUNTINGTON W.VA.
 Farm BENJ. J. PINKERNAN
 Tract 1 Acres 0.68 Lease No. _____
 Well (Farm) No. 1 Serial No. _____
 Elevation (Spirit Level) 555.5
 Quadrangle GUYANDOT *W C Kyle*
 County CABELL District GUYANDOT
 Engineer S. V. HAWORTH
 Engineer's Registration No. 224
 File No. _____ Drawing No. _____
 Date MAY 7-1940 Scale 1" = 50'

STATE OF WEST VIRGINIA
DEPARTMENT OF MINES
OIL AND GAS DIVISION
CHARLESTON

WELL LOCATION MAP
FILE NO. CAB-384

+ Denotes location of well on United States Topographic Maps, scale 1 to 62,500, latitude and longitude lines being represented by border lines as shown.

- Denotes one inch spaces on border line of original tracing.

Handwritten: No Sample 36 205 Deep Well

WEST VIRGINIA DEPARTMENT OF MINES
OIL & GAS DIVISION
WELL RECORD

Permit No. Cab-384
Guyandot Quad.

Gas Well

Company R. J. Petrie
Address Huntington, W. Va.
Farm Ben Pinkerman ACRES .68
Well No. 1 ELEV. 555.5
District *Kyle* ~~Guyandot~~ - Cabell County
Surface & Mineral Benj. J. Pinkerman, Huntington, W.Va.
Commenced -
Completed 1940
Open Flow -
Volume - *1,031 m cfs*
Rock Pressure -
Water -

CASING & TUBING
5-3/16 1344 1344
2 2600 2600

Packer -
Depth set - 1830

Surface	0	25
Sand	25	40
Slate	40	110
Sand	110	130
Slate	130	165
Sand	165	185
Slate	185	235
Sand	235	250
Slate	250	310
Sand	310	335
Black Slate	335	360
Coal	360	365
Slate	365	379
Sand	379	475
Slate	475	660
Sand	660	675
Slate	675	715
Sand	715	740
Slate	740	760
Sand	760	790
Slate	790	860
Sand	860	890
Slate	890	920
<u>Sand Lime</u>	920	940
Slate	940	955
<u>Big Lime</u>	955	1090
Blue Slate	1090	1300
Big Injun Shell	1300	1344
Slate	1344	1740
Dark Shale	1740	1755
Berea Sand	1755	1780
White Slate	1780	1828
Brown Shale	1828	1930
Light Slate	1930	2125
Brown Shale	2125	2360
Light Slate	2360	2375
Brown Shale	2375	2450
White Slate	2450	2470
Brown Shale	2470	2544
White Slate	2544	2564
Gray Shale	2564	2715
Brown Shale	2715	2774
<u>Corniferous</u>	2774	2803 bottom

(461)

20.5
7-15
555.5
1344.0
555.5
789.5