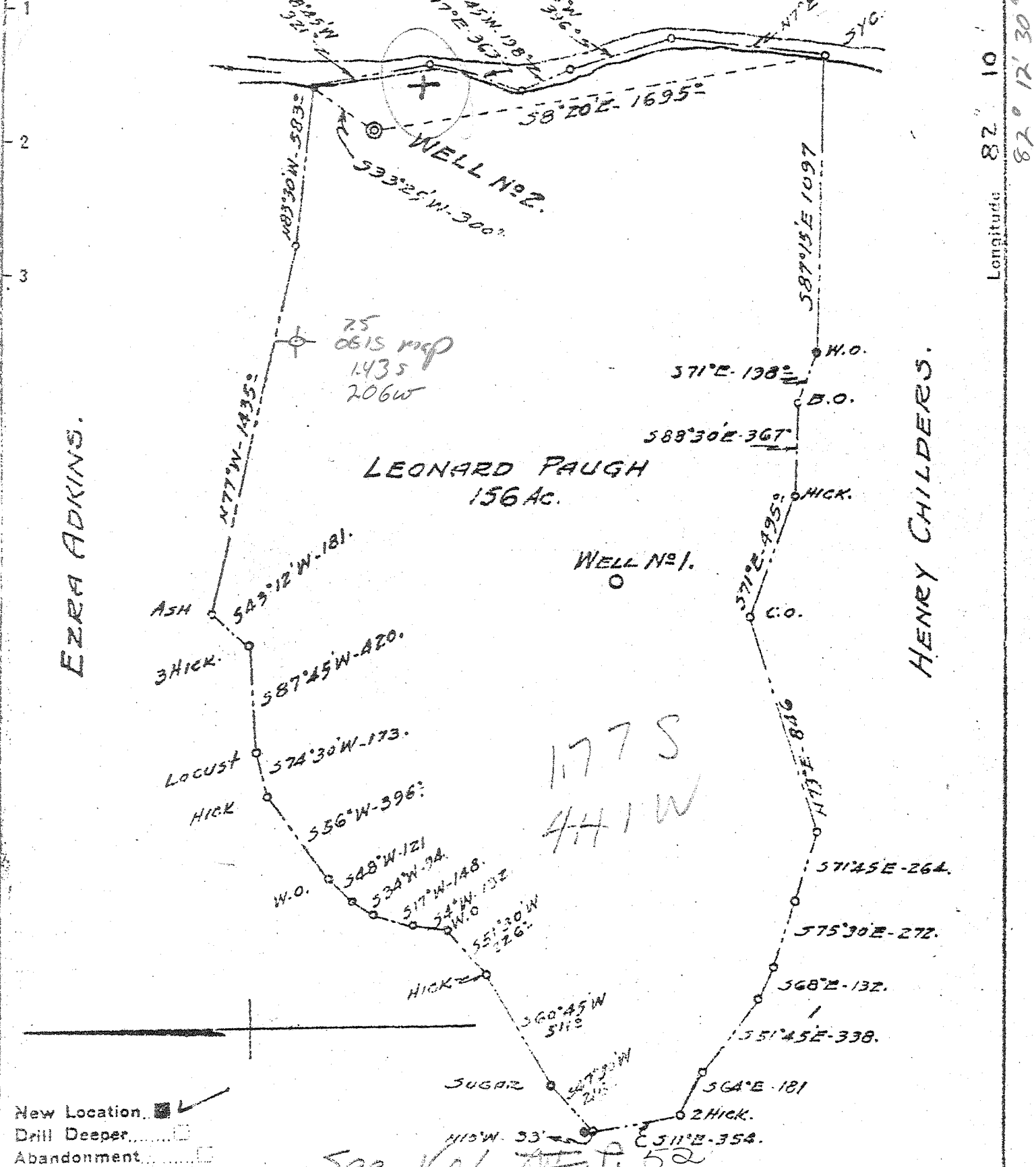


LEONARD PAUGH.



EZRA ADKINS.

HENRY CHILDERS.

LEONARD PAUGH
156 AC.

75
0815 map
1435
206W

177S
441W

500 Vol 10 p. 52

- New Location
- Drill Deeper
- Abandonment

Company ELKINS GAS CO.
 Address HAMLIN, W.VA.
 Farm LEONARD PAUGH.
 Tract 1 Acres 756 Lease No. _____
 Well (Farm) No. 2 Serial No. _____
 Elevation (Spirit Level) 668
 Quadrangle MILTON SW
 County CABELL District MC. COMAS
 Engineer J.V. HAWORTH
 Engineer's Registration No. 224
 File No. _____ Drawing No. _____
 Date 3-16-39 Scale 1" = 500'

STATE OF WEST VIRGINIA
 DEPARTMENT OF MINES
 OIL AND GAS DIVISION
 CHARLESTON

WELL LOCATION MAP
 FILE NO. CAB-345
 COBBLES PERMIE

+ Denotes location of well on United States Topographic Maps, scale 1 to 62,500, latitude and longitude lines being represented by border lines as shown.
 - Denotes one inch spaces on border line of original tracing.

500 Vol 10 p. 52 ✓ Deep Well

WEST VIRGINIA DEPARTMENT OF MINES
OIL & GAS DIVISION
W E L L R E C O R D

Permit No. Cab-345
Milton Quad.

Gas Well

Company H. A. Waggoner
Address Hamlin, W. Va.
Farm Leonard Paugh ACRES 156
Location Smith Creek
Well No. 2 ELEV. 668
District McComas - Cabell County
Surface & Mineral Leonard Paugh, Huntington, W. Va.
Commenced March 8, 1939
Completed May 9, 1939
Shot 5/6/40 - Depth bottom 3437 - top 2763
Open Flow 16/10ths Water in 2 inch
Volume 200,000 c.f.
Rock Pressure 425 lbs. 72 hrs.
Salt Water 740

CASING & TUBING

10	13	13
8-1/4	216	216
6-5/8	1494	1494
2		3437

Packer - Comb. Wall &
Anchor
Size - 6-5/8 x 2
Depth set - 3132
Perf. bot. - 305

Surface	s	0	13	
Slate	s	13	50	
Sand	h	50	55	
Slate	s	55	125	
Sand	h	125	130	
Slate	s	130	150	
Sand	h	150	400	
Slate	s	400	575	
Sand	h	575	600	
Slate	s	600	740	
Salt Sand	h	740	1075	
Red Rock	s	1075	1085	
Slate&Shells	s	1085	1175	
Little Lime	h	1175	1195	
Pencil Cave	s	1195	1200	
Big Lime	h	1200	1365	
Keener Sand	h	1365	1385	
Slate&Shells	h	1385	1425	
Big Injun	h	1425	1480	
Slate&Shells	h	1480	1494	
Slate&Shells	s	1494	1964	
Brown Shale	s	1964	1974	
Berea	h	1974	1980	
Slate&Shells	h	1980	2100	
Hard Shell	h	2100	2200	
Slate&Shells	s	2200	2400	
Brown Slate	s	2400	2475	
Slate&Shells	h	2475	2750	
Brown Shale	h	2750	2780	
White Slate	s	2780	2825	
Brown Shale	s	2825	3080	Gas 2990 10/10ths in 1"
White Slate	s	3080	3325	
Brown Shale	s	3325	3437	To corniferous

Corniferous 3437

T.D. 3437 (461)