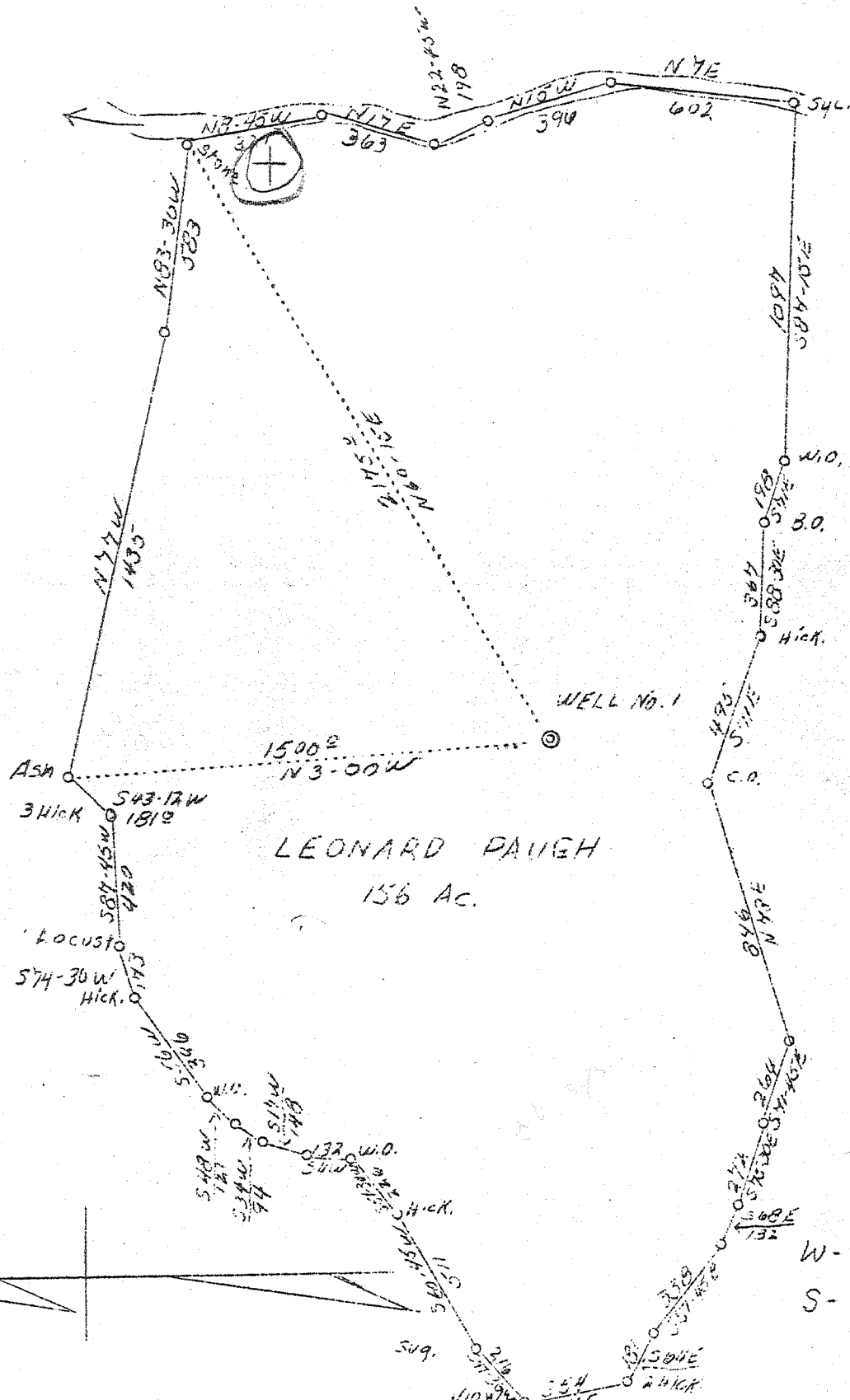


LATITUDE 38° 20'

LONGITUDE 82° 19'



75
0615
map
1645
.1305

W - 4.6
S - 1.86

New location See Vol. 1 of P 52

Company	Elkins Gas Co.
Address	Hamlin, W. Va.
Farm	Leonard Paugh
Tract	1
Acres	156
Well (Farm) No.	1
W.L. (Spirit Level)	720
Quadrangle	Windslow
County	Hilton Cabell
District	McComas
Eng.	S.V. Harworth
Eng. Reg. No.	284
Drawing No.	
Date	12/21/38
Scale	1" = 500'

STATE OF WEST VIRGINIA
Department of Mines
OIL AND GAS DIVISION
Charleston

WELL LOCATION MAP

File No. CAB-339

x Denotes location of well on U.S. Topographic Maps, scale 1 to 62,500, latitude and longitude lines being represented by border lines as shown.

- Denotes one inch spaces on border line of original tracing.

No samples 306 206 ✓ Done

WEST VIRGINIA DEPARTMENT OF MINES
OIL & GAS DIVISION
W E L L R E C O R D

Permit No. Cab-339
Milton Quad.

Gas Well

CASING & TUBING

Company	Elkins Gas Company	10	23-8	23-8
Address	Hamlin, W. Va.	8-1/4	219	None
Farm	Leonard Paugh ACRE 156	6-5/8	1593-6	1593-6
Location	Smith Creek	2		3539
Well No.	1 ELEV. 720			
District	McComas - Cabell County			
Surface & Mineral	Leonard Paugh, Huntington, W. Va.			
Commenced	Dec. 15, 1938			
Completed	Feb. 20, 1939			
Shot	2/21/39 - Depth 2830-3539			
Open Flow	38/10ths Water in 2 inch			
Volume	300,000 c.f.			
Rock Pressure	550 lbs. 72 hrs.			
Fresh Water	485			
Salt Water	875			

Packer - Hookwall &
Anchor
Size - 6-5/8 x 2
Depth set - 1324 from
bottom
Perf. bot.- 200
No coal

Surface	s	0	25	
Sand	h	25	50	
Slate	s	50	75	
Sand	h	75	125	
Slate	s	125	200	
Sand	h	200	290	
Slate	s	290	310	
Sand	h	310	575	W 485
Slate- white	s	575	655	
Sand	h	655	695	
Slate	s	695	875	
Salt Sand	h	875	1125	
Slate	s	1125	1155	
Sand	h	1155	1165	
Slate	s	1165	1175	
Lime	h	1175	1185	
Red Rock - red	s	1185	1200	
Slate	s	1200	1225	
Little Lime	h	1250	1275	
Big Lime	h	1275	1450	
Keener Sand	h	1450	1475	
Big Injun	h	1475	1585	
Slate Shells	s	1585	2062	
Brown Shale	s	2062	2077	
Berea	h	2077	2087	
Slate	s	2087	2090	
Shells	h	2090	2135	
Slate & Shells	s	2135	2145	
Shale	h	2145	2200	
Slate Shells	h	2200	2510	
Brown Shale	h	2510	2600	
White Slate	s	2600	2625	
Brown Shale	s	2625	2650	
White Slate	s	2650	2720	
Brown Shale	s	2720	2775	
White Slate	s	2775	2830	
Brown Shale	s	2830	2880	
White Slate	s	2880	2925	
Brown Shale	s	2925	3180	
White Slate	s	3180	3410	
Brown Shale	s	3410	3539	Top of Corniferous Lime - 3539

25
10

85
25
11

875
720
155

1075
920
155

A61