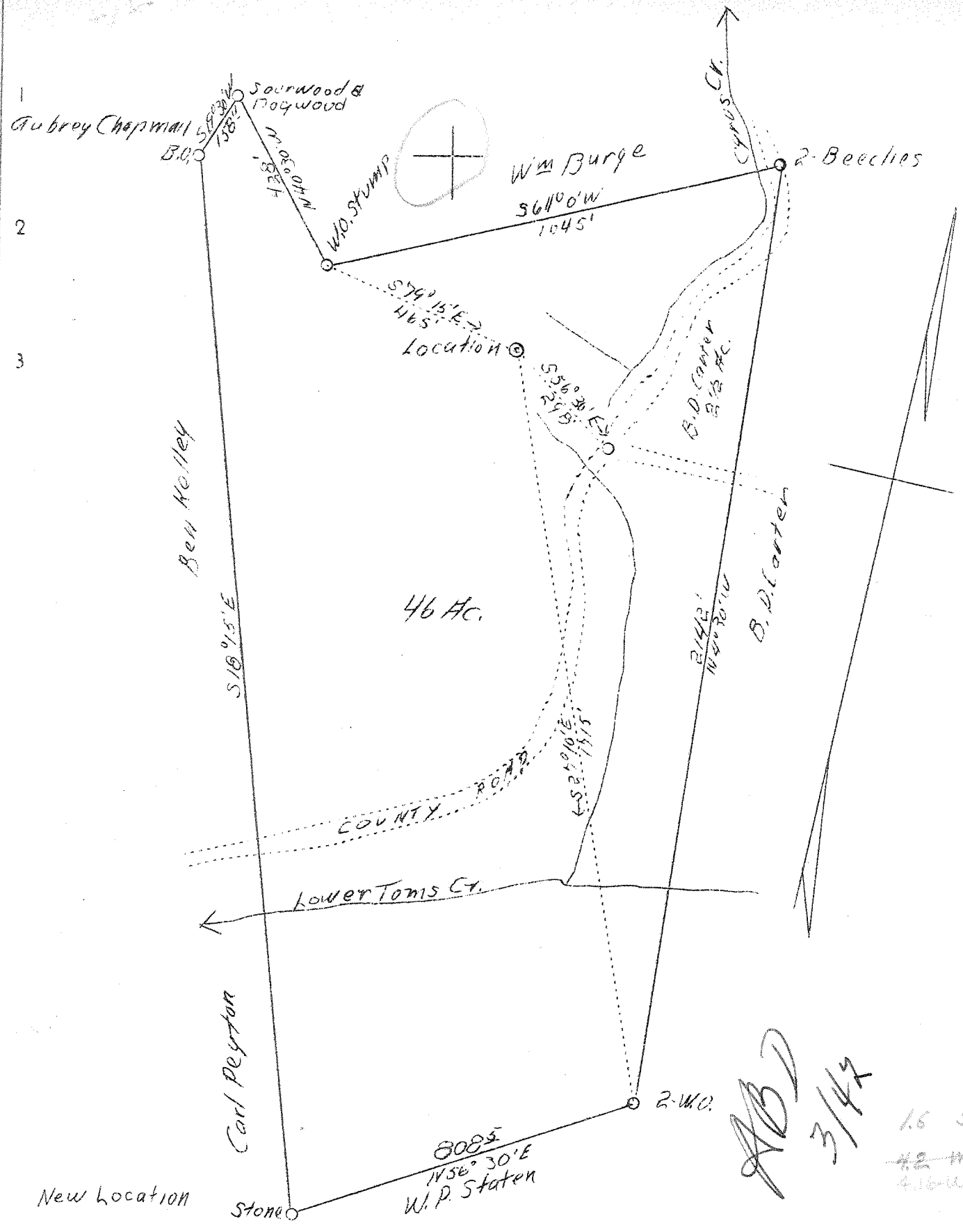


21

LATITUDE 38° 25'

LONGITUDE 82° 10'



A.B.D.
 3/42
 1.6 S
~~42 W~~
 4.16 W

Company Lower Toms Creek G.L.S Co.
 Address 2244 Wash. Ave. Huntington, W. Va.
 Farm Ida Ramsey
 Tract 1
 Acres 46
 Well (Farm) No. 1
 Serial No. 4
 Elevation 875 (Spirit Level)
 Quadrangle Milton W.C.
 County Cabell
 District McComas
 Engineer G. C. Ewing
 Eng. Reg. No. 309
 Date June 15, 1938
 Scale 1" = 300'

STATE OF WEST VIRGINIA
 Department of Mines
 OIL & GAS DIVISION
 Charleston

WELL LOCATION MAP
 File No. Cab-317

X denotes location of well on U. S. Topographic Maps, scale 1 to 62,500, latitude and longitude lines being represented by border lines as shown.
 - Denotes one inch spaces on border line of original tracing.

2-10-200

V

WEST VIRGINIA DEPARTMENT OF MINES

OIL & GAS DIVISION

WELL RECORD

Permit No. Cab-317

Gas Well

Milton Quad.

CASING & TUBING

Company	Harrison Deve. Company	10	25	25
Address	2839-4th Ave., Huntington, W.Va.	8-1/4	500	
Farm	Ida Ramsey ACRES 47-3/4	6-5/8	1990	1990
Location	Lower Toms Creek			
Well No.	One ELEV. 875			Packer - Shoe
District	McComas - Cabell County			Size -
Surface & Mineral	Ida Ramsey, Barboursville, W.Va.			Depth set -
Drilling commenced	June 6, 1938			
Drilling completed	November 5, 1938			
Date shot	11/5/38 - Depth 3670-3293			
Open Flow	18/10ths Water in 2inch			
Volume	175,000 2 hrs. after shot			
Rock pressure	500# - hrs.			
Fresh Water	375			
Salt Water	1050			

Formation Color ^{Har} 5 Top Base Result Formation Color ^{Har} 5 Top Base Result

Formation	Color	^{Har} 5	Top	Base	Result	Formation	Color	^{Har} 5	Top	Base	Result
Salt Sand			689	1420	731						
Big Lime			1650	1830							
Injun			1860	1875							
Berea			2460	2473	Shot in Berea with 60 qts. Gas before shot 16/10 W 1" or about 35,000 no increase from shot.						
Brown Shale			3265	3670							
Total Depth				3683							

575
250
1225

1560
1875
3435