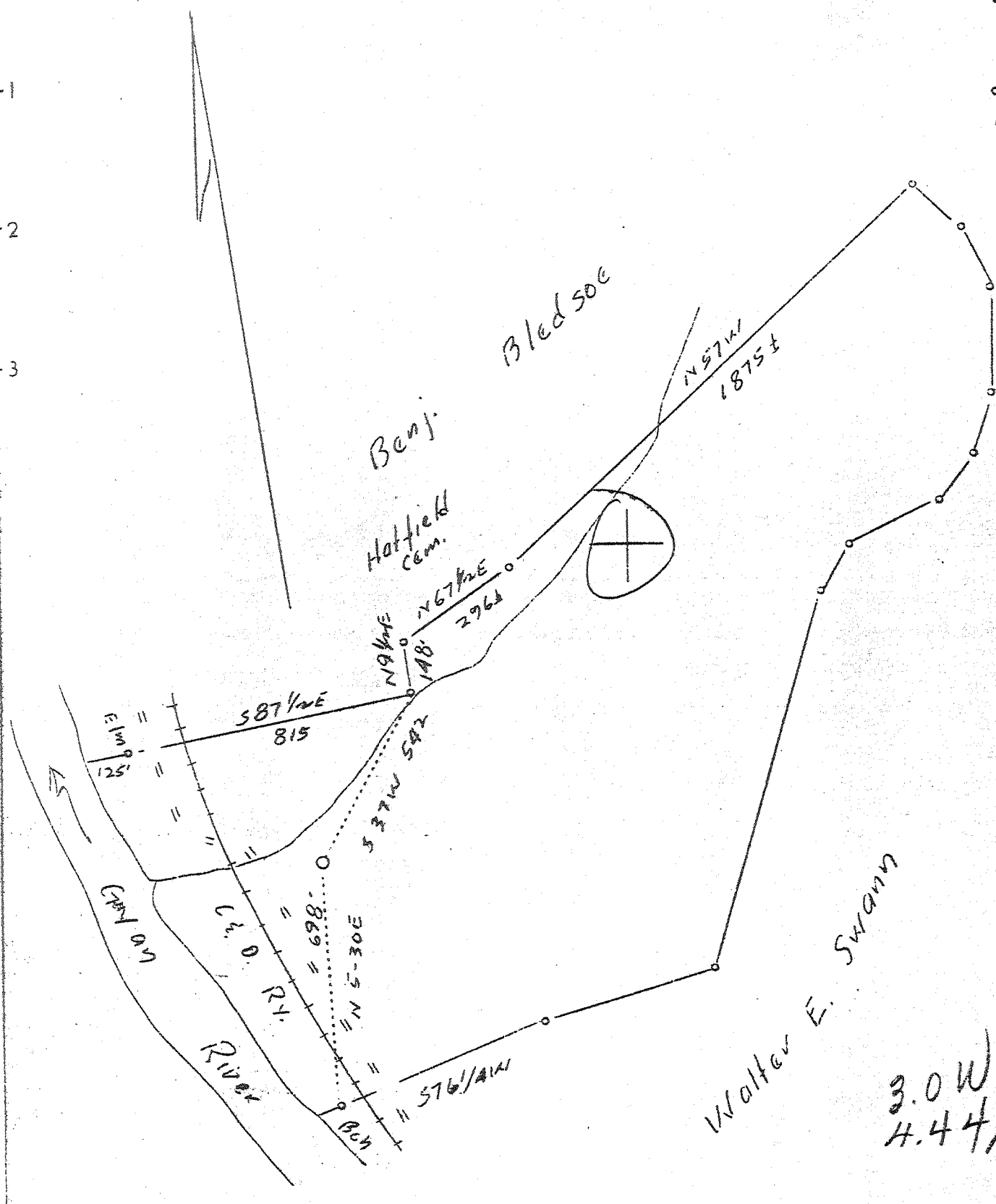


M

LATITUDE 38° 25'

LONGITUDE 82° 10'



Company Toms Creek Gas Co.
 Address Hamlin, W.Va.
 Farm Lee Davis
 Tract Acres 60 Lease No.
 Well (Farm) No. 1 Serial No.
 Elevation (Spirit Level) 590
 Quadrangle Milton W.C.
 County Cabell District McComas
 Engineer Breece & Carper, by H.W. Carper, Jr.
 Engineer's Registration No. 738
 File No. Drawing No.
 Date Mch. 30, 1938 Scale 1"=400'

STATE OF WEST VIRGINIA
 Department of Mines
 OIL AND GAS DIVISION
 CHARLESTON

WELL LOCATION MAP
 File No. CAB-313

Denotes location of well on United States Topographic Maps, scale 1 to 62,500, latitude and longitude lines being represented by border lines as shown.

Denotes one inch spaces on border line of original tracing.

3.0 W
 H.44

