

40°22'30"

Latitude

80°35'00"

Longitude

2.335
.63w

Topo Location

7.5' Loc. _____ 15' Loc. _____
 _____ (calc.) _____

Company Brook-Mas Oil Corp

Farm Wheeling Steel Corp #21

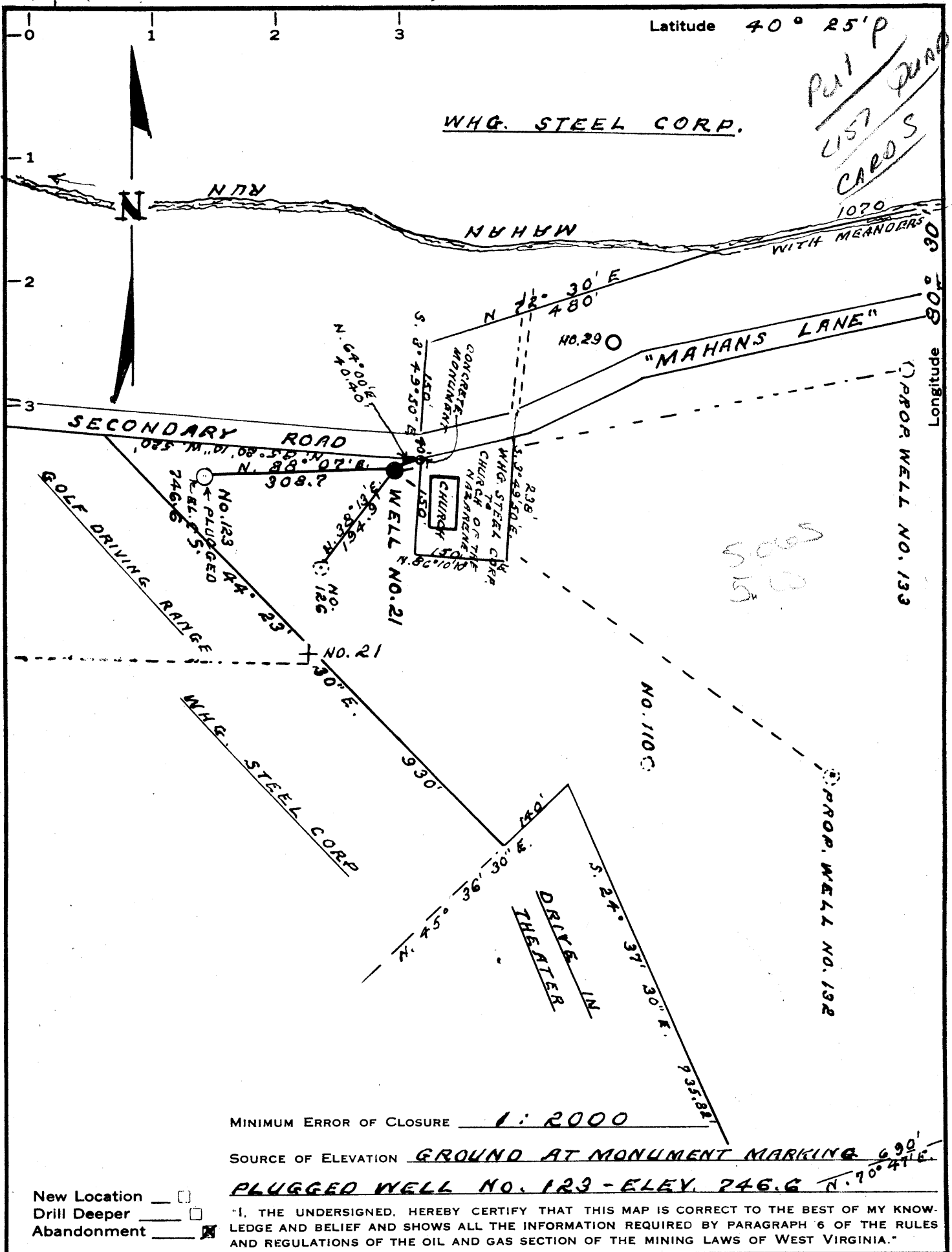
15' Quad _____
(sec.)

7.5' Quad Statenville East

District Cross Creek

WELL LOCATION PLAT

County 009 Permit 30067



MINIMUM ERROR OF CLOSURE 1:2000

SOURCE OF ELEVATION GROUND AT MONUMENT MARKING 690'

PLUGGED WELL NO. 123 - ELEV. 746.6

New Location
 Drill Deeper
 Abandonment

"I, THE UNDERSIGNED, HEREBY CERTIFY THAT THIS MAP IS CORRECT TO THE BEST OF MY KNOWLEDGE AND BELIEF AND SHOWS ALL THE INFORMATION REQUIRED BY PARAGRAPH 6 OF THE RULES AND REGULATIONS OF THE OIL AND GAS SECTION OF THE MINING LAWS OF WEST VIRGINIA."

Company BROOK-MAR OIL CORP.
 Address P.O. BOX 185 - GLENDALE, W. VA.
 Farm WHEELING STEEL CORP.
 Tract 1 Acres 52.5 Lease No. _____
 Well (Farm) No. 21 Serial No. _____
 Elevation (Spirit Level) 742.2
 Quadrangle STEBENVILLE EC
 County BROOKE District CROSS CREEK
 Engineer Gordon W. Sammons
GORDON W. SAMMONS
 Engineer's Registration No. 509
 File No. _____ Drawing No. _____
 Date FEB-17-1967 Scale 1" = 200'

STATE OF WEST VIRGINIA
 DEPARTMENT OF MINES
 OIL AND GAS DIVISION
 CHARLESTON

WELL LOCATION MAP

FILE NO. ORO-679
 PERMIT TO PLUG ISSUED 4/10/67
 + Denotes location of well on United States Topographic Maps, scale 1 to 62,500, latitude and longitude lines being represented by border lines as shown. *oil*

— Denotes one inch spaces on border line of original tracing.