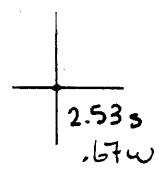


40°22'30"

Latitude

80°35'00"

Longitude



**Topo Location**

7.5' Loc. \_\_\_\_\_ 15' Loc. \_\_\_\_\_  
 \_\_\_\_\_ (calc.) \_\_\_\_\_

Company Wheeling Steel Corp

Farm Wheeling Steel Corp # 44

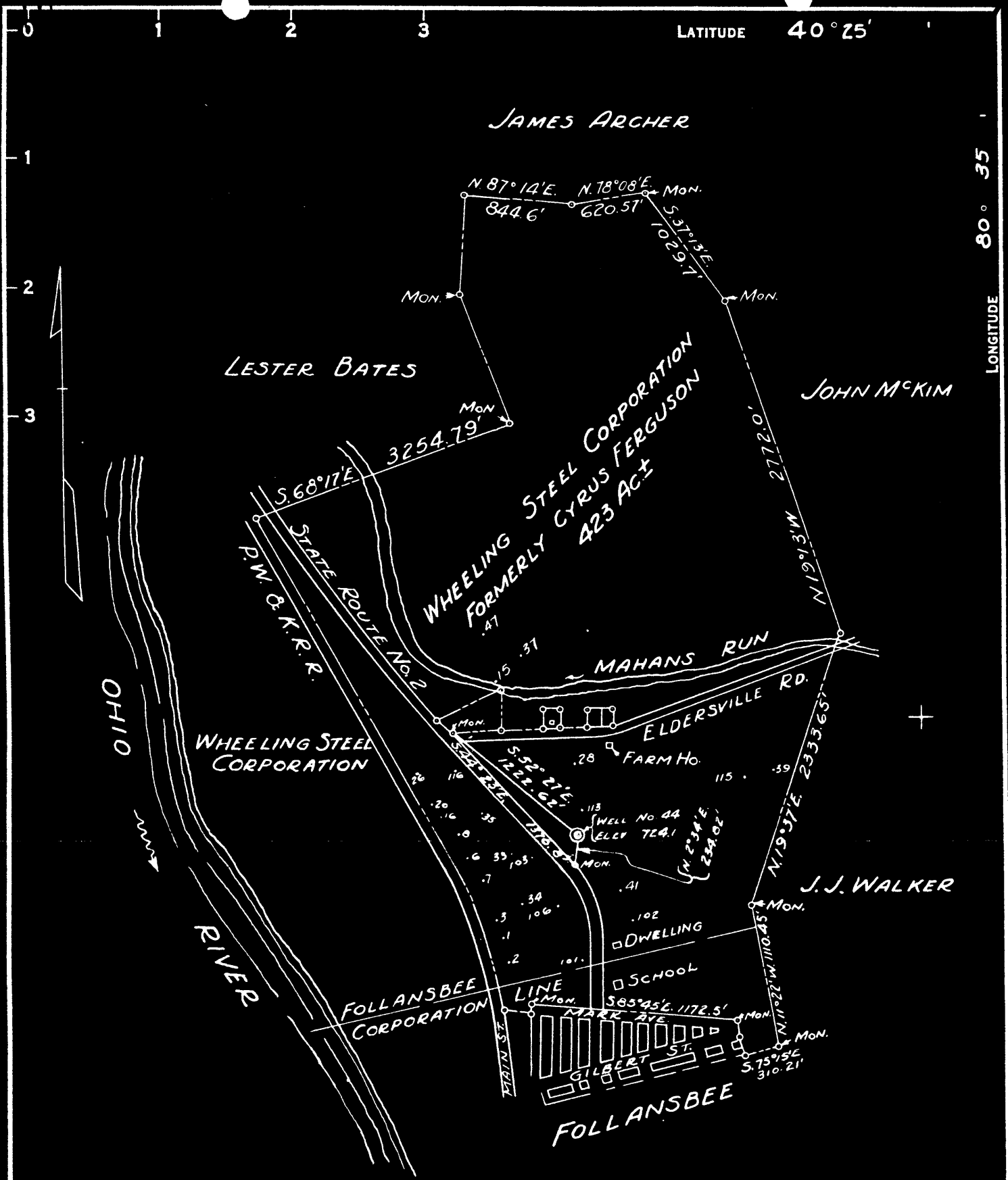
15' Quad \_\_\_\_\_  
(sec.)

7.5' Quad Steubenville East

District Cross Creek

**WELL LOCATION PLAT**

County 009 Permit 30059



NEW LOCATION.....   
 DRILL DEEPER.....   
 ABANDONMENT.....

COMPANY WHEELING STEEL CORPORATION  
 ADDRESS (GENERAL OFFICE) WHEELING, W. VA.  
 FARM WHEELING STEEL CORPORATION FORMERLY CYRUS FERGUSON  
 TRACT \_\_\_\_\_ ACRES 423<sup>±</sup> LEASE No. \_\_\_\_\_  
 WELL (FARM) No. 44 SERIAL No. \_\_\_\_\_  
 ELEVATION (SPIRIT LEVEL) 724.1  
 QUADRANGLE STEBENVILLE  
 COUNTY BROOKE DISTRICT CROSS CREEK  
 ENGINEER SIDNEY C. SMITH - C.C. SMITH'S SONS  
 ENGINEER'S REGISTRATION No. 240  
 FILE No. \_\_\_\_\_ DRAWING No. \_\_\_\_\_  
 DATE JULY 28, 1948 SCALE 1" = 1000'

STATE OF WEST VIRGINIA  
 DEPARTMENT OF MINES  
 OIL AND GAS DIVISION  
 CHARLESTON  
**WELL LOCATION MAP**  
 FILE No. BRO-59-A

+ DENOTES LOCATION OF WELL ON UNITED STATES TOPOGRAPHIC MAPS. SCALE 1 TO 62,500, LATITUDE AND LONGITUDE LINES BEING REPRESENTED BY BORDER LINES AS SHOWN.  
 - DENOTES ONE INCH SPACES ON BORDER LINE OF ORIGINAL TRACING.