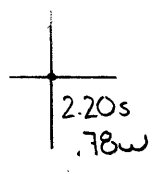


Latitude

Longitude



Topo Location

7.5' Loc. _____ 15' Loc. _____
 _____ (calc.) _____

Company Wheeling Steel Corp

Farm Wheeling Steel Corp #37

15' Quad _____
(sec.)

7.5' Quad Stuebenville East

District Cross Creek

WELL LOCATION PLAT

County 009 Permit 30033

LATITUDE 40° 25'

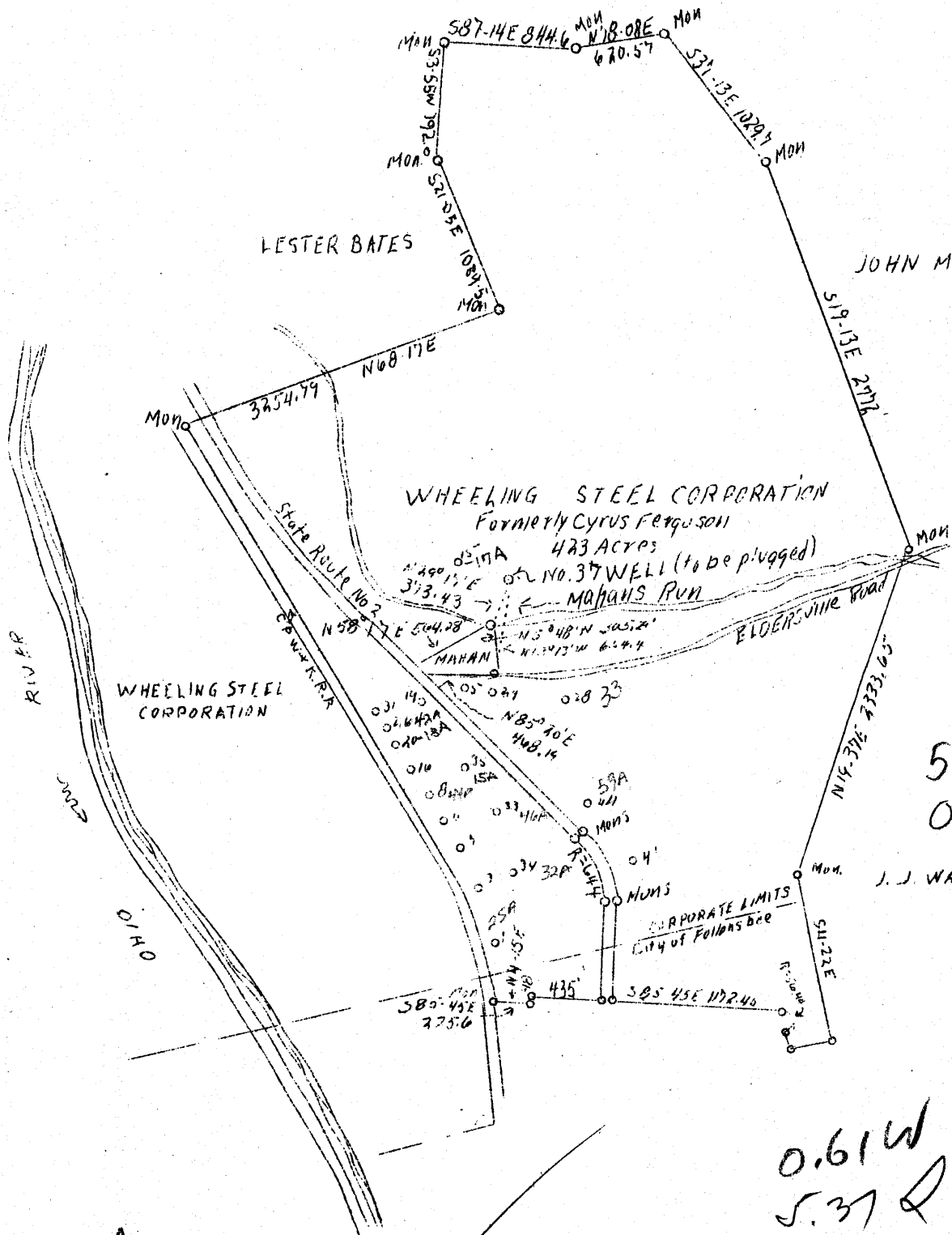
LONGITUDE 80° 35'

JAMES ARCHER

LESTER BATES

JOHN McKIM

J. J. WALKER



M.H.

NOV 28 1938

0.61 W
5.37 R

| | | |
|-----------------|---------------------------------------|---|
| Company | Wheeling Steel Corporation | STATE OF WEST VIRGINIA |
| Address | (Gen'l Office) Wheeling, W. Va. | Department of Mines |
| Farm | Wheeling Steel Corp. (Cyrus Ferguson) | OIL AND GAS DIVISION |
| Acres | 423 | Charleston |
| Well (Farm) No. | 37 | WELL LOCATION MAP |
| Quadrangle | Staubenville | File No. <u>B40-33</u> (A) |
| County | Brooke | |
| District | Cross Creek | |
| Eng. | Eugene M. Smith | |
| Eng. Reg. No. | 390 | x Denotes location of well on U.S. Topo- graphic Maps, scale 1 to 62,500, latitude and longitude lines being represented by border lines as shown. |
| Date | 11/24/38 | - Denotes one inch spaces on border line of original tracing. |
| Scale | 1" = 1000' | |

6-6

(011)