

40°22'30"

Latitude

80°35'00"

Longitude

	2.615
	.81w

Topo Location

7.5' Loc. _____ 15' Loc. _____
 _____ (calc.) _____

Company Wheeling Steel Corp

Farm Wheeling Steel Corp #34

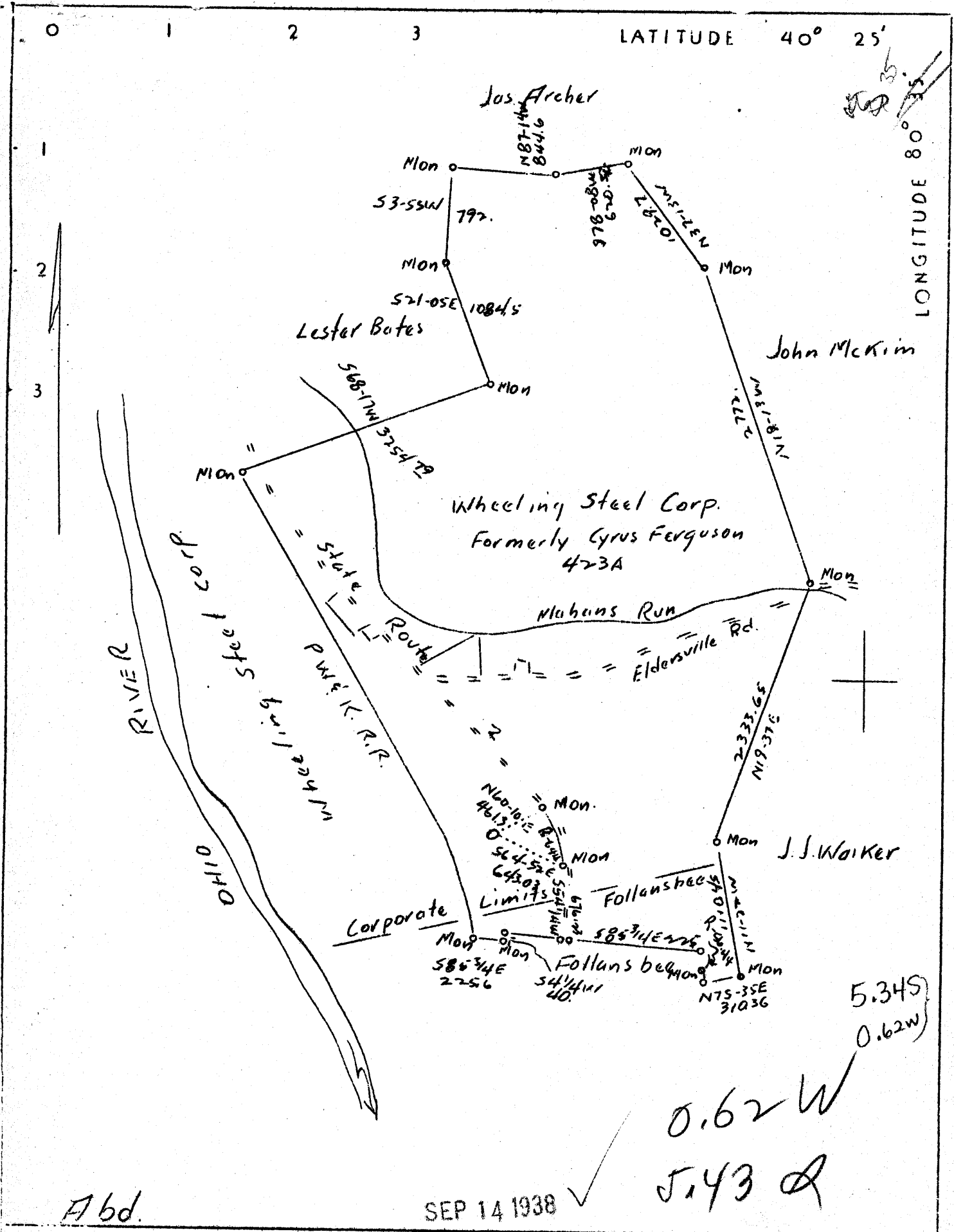
15' Quad _____
(sec.)

7.5' Quad Stuebenville East

District Cross Creek

WELL LOCATION PLAT

County 009 Permit 30032



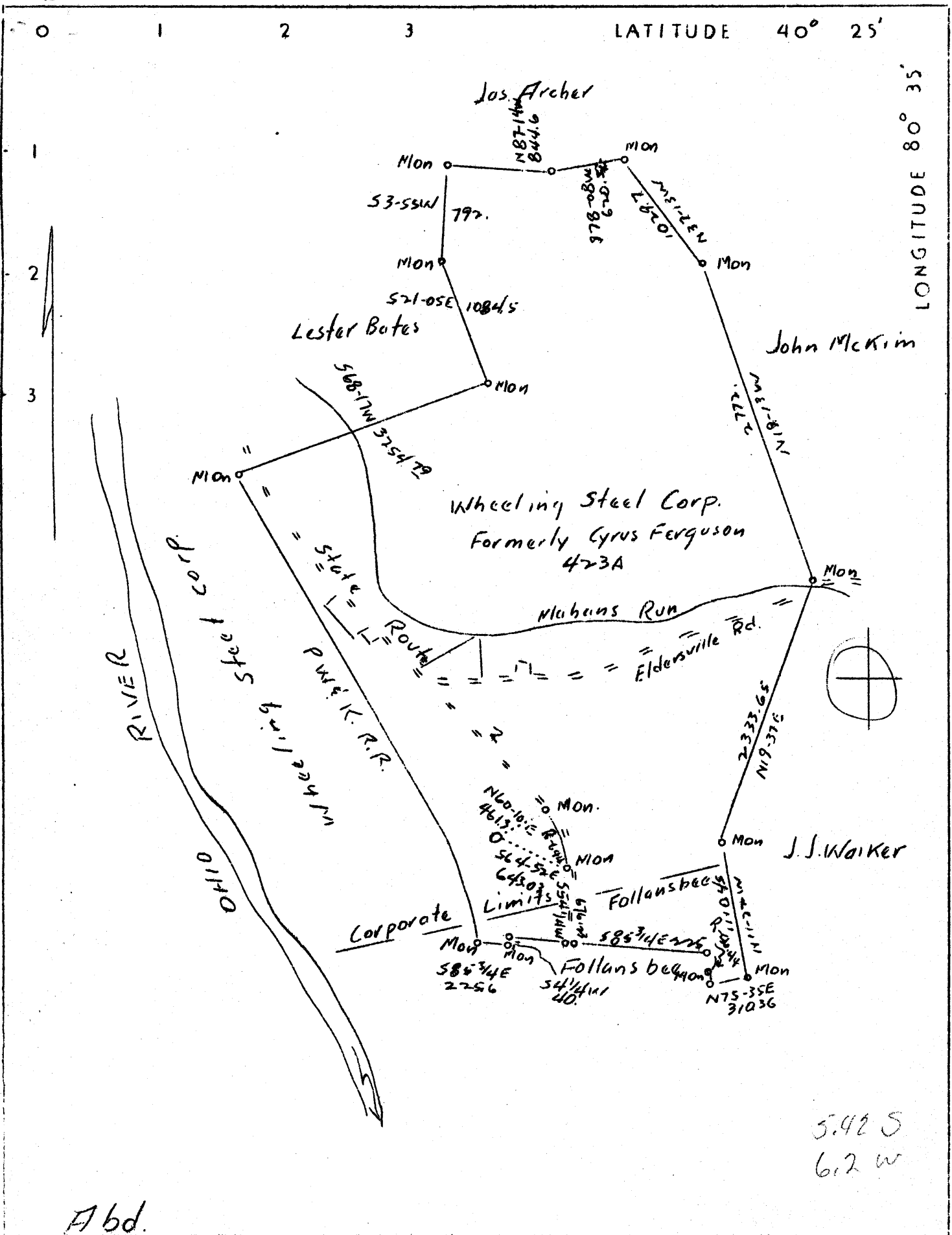
Company	Wheeling Steel Corp.
Address	Wheeling, W. Va.
Farm	Wheeling Steel Corp. Formerly Cyrus Ferguson
Acres	423
Well (Farm) No.	34
Quadrangle	Steubenville
County	Brooke
District	Cross Creek
Engineer	Eugene M. Smith
722 L'	C. C. Smith Sons
Eng. Reg. No.	390
Date	-
Scale	1" = 1000'

STATE OF WEST VIRGINIA
 Department of Mines
 OIL & GAS DIVISION
 Charleston

WELL LOCATION MAP
 File No. BRO-32A

x Denotes location of well on U. S. Topographic Maps, scale 1 to 62,500, latitude and longitude lines being represented by border lines as shown.

- Denotes one inch spaces on border line of original tracing.



Company	Wheeling Steel Corp.	STATE OF WEST VIRGINIA
Address	Wheeling, W. Va.	Department of Mines
Farm	Wheeling Steel Corp. Formerly Cyrus Ferguson	OID & GAS DIVISION
		Charleston
Acres	423	
Well (Farm) No.	34	
Quadrangle	Steubenville C	
County	Brooke	
District	Cross Creek	
Engineer	Eugene M. Smith C. C. Smith Sons	
Eng. Reg. No.	390	
Date	-	
Scale	1" = 1000'	

WELL LOCATION MAP

File No. BRO-32A

x Denotes location of well on U. S. Topographic Maps, scale 1 to 62,500, latitude and longitude lines being represented by border lines as shown.

- Denotes one inch spaces on border line of original tracing.

WEST VIRGINIA DEPARTMENT OF MINES
OIL AND GAS DIVISION

23

WELL RECORD

Permit No. BR0-32-A

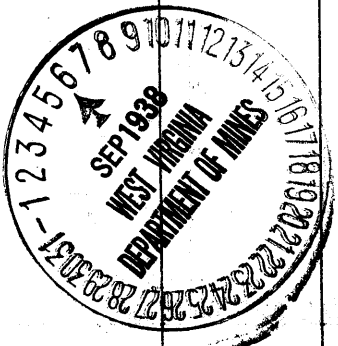
Oil or Gas Well Oil
(Kind)

Company Wheeling Steel Corporation
 Address Wheeling, West Virginia
 Farm Corporation Acres 433
 Location (waters) 1/2 mile east of Ohio River
 Well No. 24 Elev. 722
 District Cross Creek County Brooks
 The surface of tract is owned in fee by Wkg. Steel Corp.
 Address Wheeling
 Mineral rights are owned by Wkg. Steel Corp.
 Address Wheeling
 Drilling commenced Not known
 Drilling completed "
 Date shot " Depth of shot Not known
 Open Flow /10ths Water in " Inch
 /10ths Merc. in " Inch
 Volume Not known Cu. Ft.
 Rock Pressure " lbs. hrs.
 Oil " bbls., 1st 24 hrs.
 Fresh water " feet feet
 Salt water " feet feet

Casing and Tubing	Used in Drilling	Left in Well	Packers
Size			
16	2 1/2"		Kind of Packer <u>Wall</u>
13	<u>4 1/2"</u>	<u>4 1/2"</u>	
10	<u>1 1/2"</u>	<u>1 1/2"</u>	Size of <u>2 1/2"</u>
8 1/4	<u>6 9/16"</u>	<u>6 9/16"</u>	
6 5/8	<u>9 7/8"</u>	<u>9 7/8"</u>	Depth set <u>2 1/2"</u>
5 3/16	<u>10 5/8"</u>	<u>10 5/8"</u>	<u>5-5/16" packer</u>
3			5-5/16" set at
2			Bottom 10 5/8"
Liners Used			Perf. top
			Perf. bottom

No record
 CASING CEMENTED " SIZE " No. FT. " Date "
 COAL WAS ENCOUNTERED AT 227 FEET 6 INCHES
226 FEET " INCHES FEET INCHES
" FEET INCHES FEET INCHES

Formation	Color	Hard or Soft	Top	Bottom	Oil Gas or Water	Depth Found	Remarks
							<p>This well was drilled about thirty (30) years ago and no log of drilling record is available. The following information has been secured from sources, considered reliable;</p> <p>Depth of hole is 1331 ft; casing used as per Data Sheet No. 1; three oil sands penetrated vis. Salt, Big Injun and Berea. Oil is found in Berea. Salt sand is about 50 ft. in thickness; Big Injun about 200 ft. and Berea averages 25 ft. Berea sand light brown, soft and friable - other sands are darker in color and harder.</p> <p>Upper and lower Freeport coal measures are penetrated at depth points from surface of about 227 ft. and 226 ft. respectively.</p> <p>This coal is not being mined.</p> <p>Field is pressured with air - 35# to 40# and producing wells are vacuum pumped with gauge registering about 25 in.</p>



Formation	Color	Hard or Soft	Top	Bottom	Oil, Gas or Water	Depth Found	Remarks
WHEELING STEEL CORPORATION							

Date..... 9-3-38, 19.....

APPROVED Wheeling Steel Corp, Owner

By..... J. W. H. G. S.,
(Title) SUPV

Cross Creek District, Brooke County, W. Va.

By Wheeling Steel Corporation, Wheeling, W. Va.

On 423 acres, along State Highway No. 2 and Ohio River.

Surface and minerals owned by Wheeling Steel Corp., Wheeling, W. Va.

Elevation, 722' L.

12 $\frac{1}{2}$ " steel pipe, 48'; 10" casing, 111'; 8 $\frac{1}{4}$ " , 890'; 6 $\frac{5}{8}$ " , 975'; 5 $\frac{3}{8}$ " , 1050'.

Wall packer, 5 $\frac{3}{8}$ " , set ~~at~~ bottom of 5 $\frac{3}{8}$ " pipe, set at 1050'.

Casing not perforated. No liners used.

Coal was encountered at 227 $\frac{1}{2}$ -231 and 266-271'.

Abandonment reported to Dept. of Mines Sept. 3, 1938.

$\frac{1}{2}$ mile east of Ohio River.

Oil well.

This well was drilled about thirty (30) years ago and no long or drilling record is available. The following information has been secured from sources, considered reliable:

Depth of hole is 1331 ft.; casing used as per data sheet No. 1; three oil sands penetrated, viz, Salt, Big Injun, and Berea. Oil is found in Berea. Salt Sand is about 50 ft. in thickness; Big Injun about 300 ft. and Berea averages 25 ft. Berea Sand light brown, soft and friable - other sands are darker in color and harder.

Upper and Lower Freeport Coal measures are penetrated at depth points from surface of about 227 ft. and 266 ft., respectively.

This coal is not being mined.

Field is pressured with air - 35# to 40# and producing wells are vacuum pumped with gauge registering about 25 in.