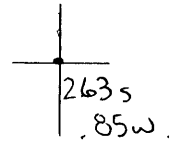


40°22'30"

Latitude

80°35'00"

Longitude



Top Location

7.5' Loc. _____ 15' Loc. _____
 _____ (calc.) _____

Company Wheeling Steel Corp

Farm Wheeling Steel Corp #1

15' Quad _____
(sec.)

7.5' Quad Steubenville East

District Cross Creek

WELL LOCATION PLAT

County 009 Permit 30025

LATITUDE 40° 25'

LONGITUDE 80° 35'

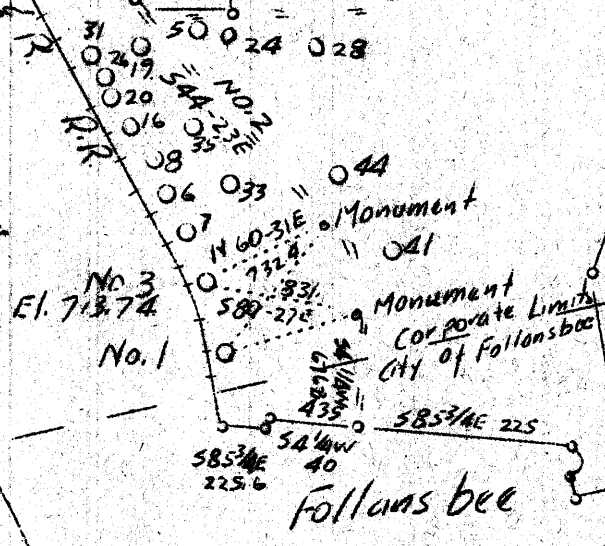
Jas Archer

John McKim

Wheeling Steel Corp
423 A.

Mahans Run

RIVER
DHIO
Steel Corp
C.R.M.F. 12046



J.J. Walker

#1	0.58 W 5.548
#3	0.63 W 5.498

Bearing & distance for No 1 not given.

Company Wheeling Steel Corp.
 Address (General Office) Wheeling, W.Va.
 Farm Wheeling Steel Corp. (Formerly Cyrus Ferguson)
 Tract Acres 423 Lease No.
 Well (Farm) No. 1 & 3 Serial No. (3)
 Quadrangle Steubenville
 County Brooke
 District Cross Cr.
 Engineer Eugene M. Smith - C.C. Smiths Sons
 Engineer's Registration No. 390
 File No. Drawing No.
 Date Not given Scale 1"=1000'

STATE OF WEST VIRGINIA
 Department of Mines
 OIL AND GAS DIVISION
 CHARLESTON

WELL LOCATION MAP

File No. BRO-25A & 26A

+ Denotes location of well on United States Topographic Maps, scale 1 to 62,500, latitude and longitude lines being represented by border lines as shown.

- Denotes one inch spaces on border line of original map.