

Latitude 40° 25'

Longitude 80° 35'

JAMES ARCHER

LESTER BATES

JOHN MCKIM

WHEELING STEEL CORPORATION
Formerly
Cyprus Ferguson 423 A.C.S.

WHEELING STEEL CORPORATION

J. J. WALKER

RIVER

OHIO

STATE ROUTE No. 2

R.W. BK. RD.

ELDERSVILLE ROAD

Follansbee Corporation Line

MAHANS RUN

Well No. 17
Elev 746'

School

Dwelling

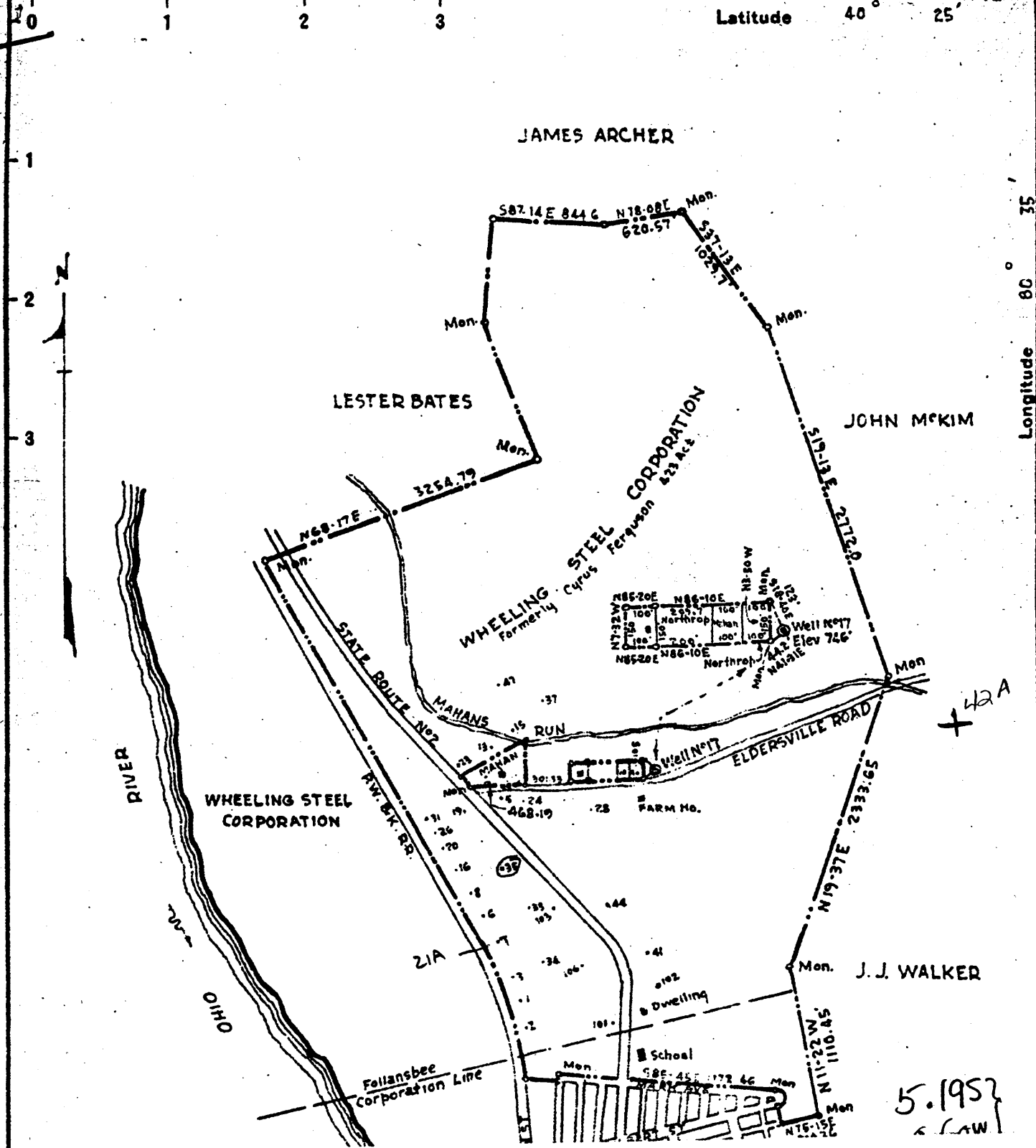
42A

5.1952
S. LAW

Wheeling Steel # 35

009-16A

42A)



Wheeling St Cup #18

#

30016

~~EA~~