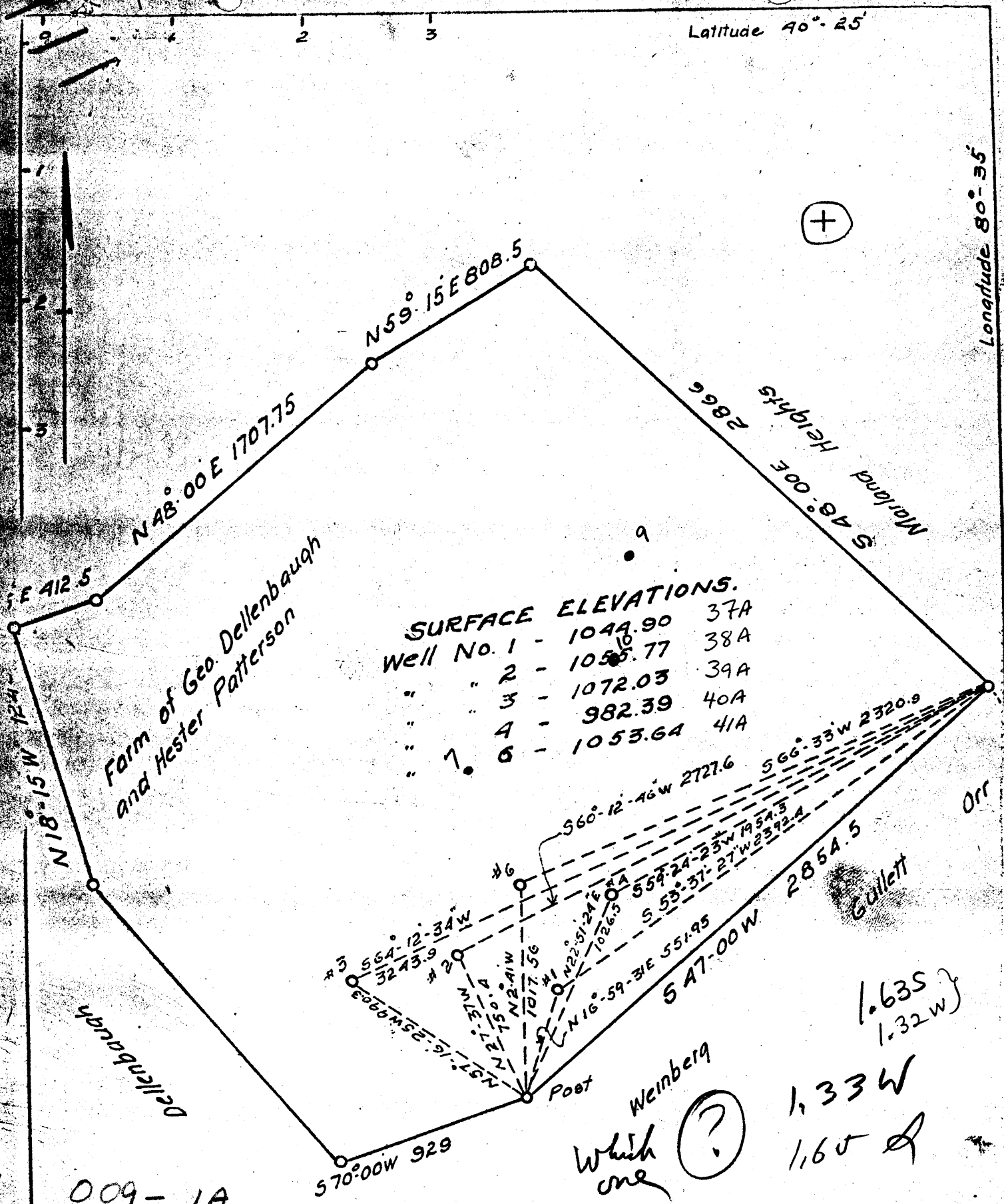


Latitude 40°-25'

Longitude 80°-35'



SURFACE ELEVATIONS.

Well No. 1	-	1044.90	37A
"	"	1055.77	38A
"	"	1072.03	39A
"	"	982.39	40A
"	"	1053.64	41A

Farm of Geo. Dellenbaugh
and Hester Patterson

Dellenbaugh

Wemberg

Gullett

Which one ?

1.635
1.32 W }
1.33 W
1.65

009-1A

JAN 16 1940

1" = 600'

M 15



Morland Heights
S 48° 00' E 2866

S 412.5

N 48° 00' E 1707.75

N 59° 15' E 808.5

N 18° 15' W 1224

#3 S 64° 12' 34" W 3243.9

#2 N 17° 31' W 150.4

N 21° 15' W 150.4

N 22° 51' 24" E 1026.5

N 16° 59' 31" E 551.95

S 47° 00' W 2854.5

S 66° 33' W 2320.9

S 53° 37' 27" W 2392.4

S 54° 24' 23" W 1954.3

S 60° 12' 46" W 2727.6

S 70° 00' W 929

Post

Orr

BPO-1-A

Cross Creek District, Brooke County, W. Va.
 Unity Oil Co. and G. C. Dellenbach, Pittsburgh, Pa. (Drilled by).
 Now owned by Wasmuth and Delong, Jas. P. Wasmuth, Supt., Glendale, W. Va.
 On 236.5 acres, surface owned by The Half Moon Company, 319 Washing-
 ton St., Steubenville, Ohio, and mineral rights by Wasmuth &
 Delong, Glendale, W. Va.

Elevation, 1066'.

13" conductor, 16'; 8 1/4" casing, 810'; 6 1/2", 1041'; 4-7/8", 1065'.

No packer. Casing not perforated. No liners used.

Coal was encountered at 480-485, and 580-585'.

Completed Nov. 30, 1909.

Well was shot at 1467 to 1473'.

Abandonment reported to Dept. of Mines July 3, 1930.

	Top.	Bottom.
Sand	50	75
Slate	75	125
Sand	125	135
Slate	135	160
Red rock	160	173
Slate	173	265
Sand	265	318
Slate	318	353
Sand	353	373
Slate	373	480
Coal	480	485
Lime	485	495
Slate	495	518
Sand	518	580
Coal	580	585
Slate	585	595
Sand	595	675
Slate	675	715
Sand	715	740
Slate	740	755
Sand	755	810
Slate	810	871
Big Injun Sand	871	1106
Slate	1106	1325
Stray sand	1325	1414
Slate	1414	1447
Shell	1447	1450
Berea Grit Sand, to bottom	1450	1482