

# SWN PRODUCTION COMPANY, LLC

Location: Brooke County, WV

Slot: Slot #201H

Field: Brooke

Well: John Good Jr BRK 201H

Facility: John Good Jr BRK Pad

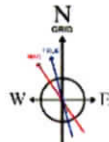
Wellbore: John Good Jr BRK 201H PWB

Plot reference wellpath is John Good Jr BRK 201H PWP Rev-A.D	Grid System: NAD83 / UTM Zone 17 North, US feet
True vertical depths are referenced to SDC 40 (KB)	North Reference: Grid north
Reference wellpath measured depths are referenced to SDC 40 (KB)	Scale: True distance
SDC 40 (KB) to Mean Sea Level: 1179.4 feet	Coordinates are in feet referenced to Slot
Mean Sea Level to Ground level (At Slot: Slot #201H): -1153.4 feet	Depths are in feet
Offset wellpath MDs are referenced to each path's default MD datum	Created by: alegen on 2021-05-14; Database: WA_MPL_EASTERNUS_Deln

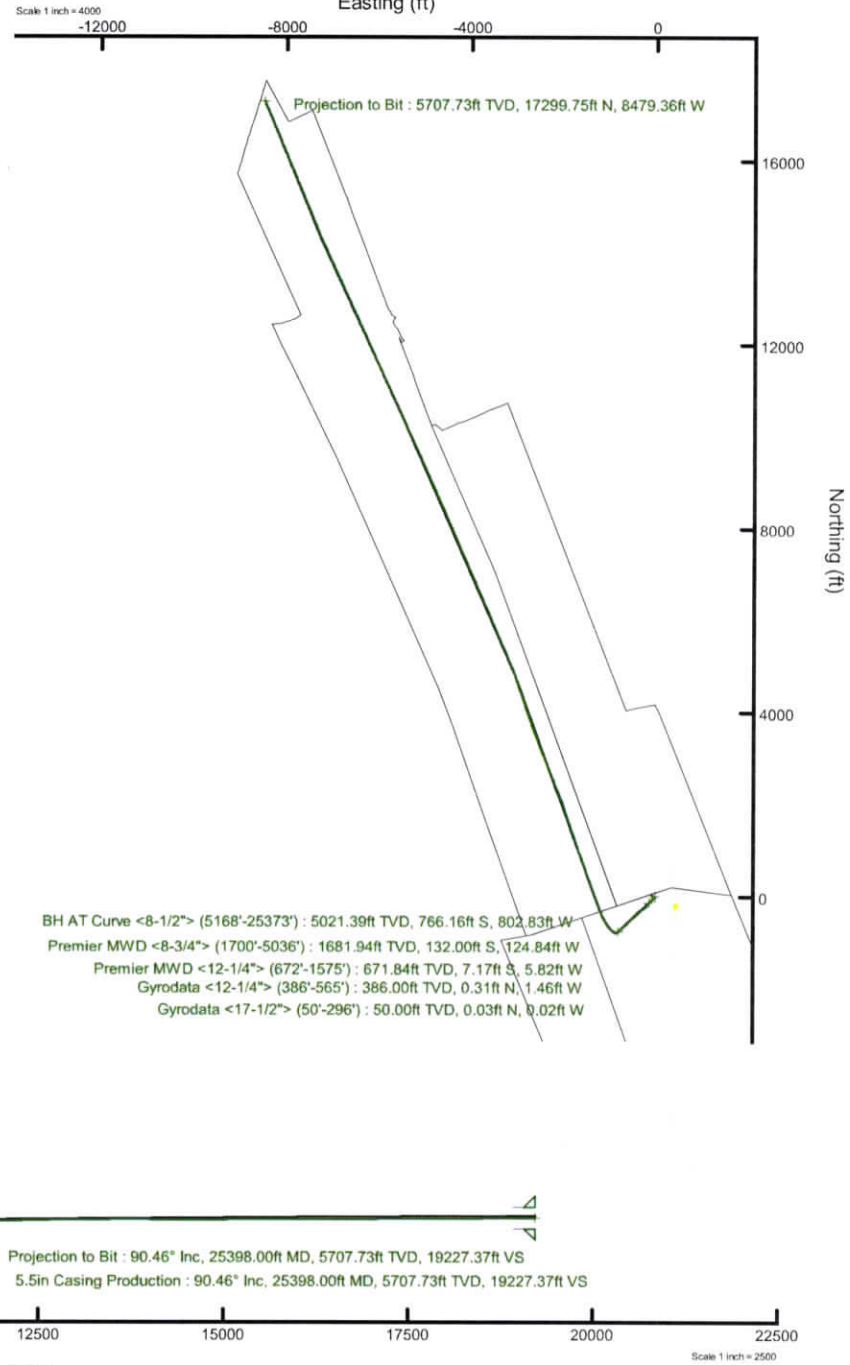
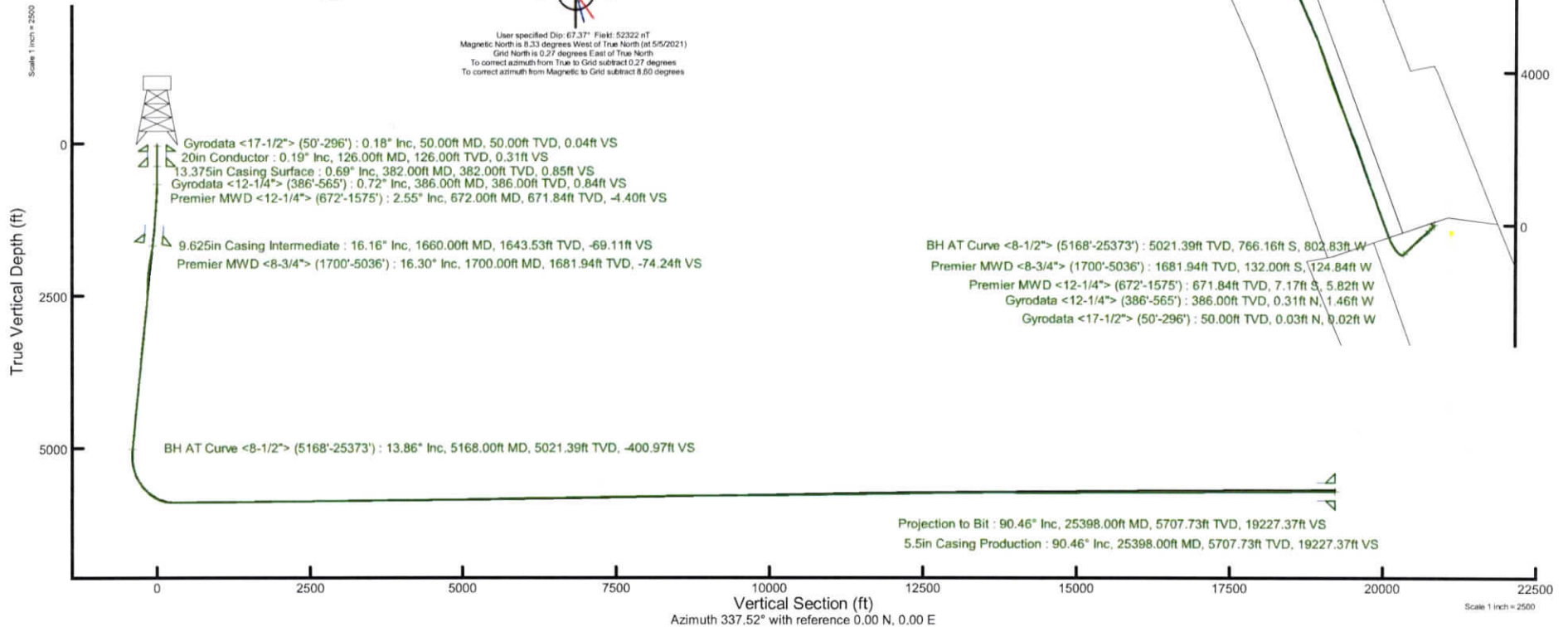
## Location Information

Facility Name		Grid East (US ft)	Grid North (US ft)	Latitude	Longitude	
John Good Jr BRK Pad		1757463.232	14608504.851	40°13'25.6660"N	80°34'50.4520"W	
Slot	Local N (ft)	Local E (ft)	Grid East (US ft)	Grid North (US ft)	Latitude	Longitude
Slot #201H	-16.42	67.25	1757530.460	14608488.440	40°13'25.5006"N	80°34'49.5860"W
SDC 40 (KB) to Ground level (At Slot: Slot #201H)				26ft		
Mean Sea Level to Ground level (At Slot: Slot #201H)				-1153.4ft		
SDC 40 (KB) to Mean Sea Level				1179.4ft		

API: 47-009-00322-0000  
 BH Job #: 110819292  
 Rig: SDC 40  
 Duration: 05/07/2021 - 05/12/2021



User specified Dip: 67.37° Field: 52322 nT  
 Magnetic North is 8.33 degrees West of True North (at 5/5/2021)  
 Grid North is 0.27 degrees East of True North  
 To correct azimuth from True to Grid subtract 0.27 degrees  
 To correct azimuth from Magnetic to Grid subtract 8.60 degrees





# Actual Wellpath Report

John Good Jr BRK 201H AWP Proj: 25398'  
Page 1 of 13



## REFERENCE WELLPATH IDENTIFICATION

Operator	SWN PRODUCTION COMPANY, LLC	Well	John Good Jr BRK 201H
Field	Brooke	API/Legal	
Facility	John Good Jr BRK Pad	Wellbore	John Good Jr BRK 201H AWB
Slot	Slot #201H		

## REPORT SETUP INFORMATION

Projection System	NAD83 / UTM Zone 17 North, US feet	Software System	WellArchitect® 6.0
North Reference	Grid	User	Atenjen
Scale	0.999616	Report Generated	5/13/2021 at 5:50:19 PM
Convergence at slot	0.27° East	Database	WA_MPL_EASTERNUS_Defn

## WELLPATH LOCATION

	Local coordinates		Grid coordinates		Geographic coordinates	
	North[ft]	East[ft]	Easting[US ft]	Northing[US ft]	Latitude	Longitude
Slot Location	-16.42	67.25	1757530.46	14608488.44	40°13'25.5006"N	80°34'49.5860"W
Facility Reference Pt			1757463.23	14608504.85	40°13'25.6660"N	80°34'50.4520"W
Field Reference Pt			0.00	0.00	0°00'0.0000"	85°29'19.4780"W

## WELLPATH DATUM

Calculation method	Minimum curvature	SDC 40 (KB) to Facility Vertical Datum	1179.40ft
Horizontal Reference Pt	Slot	SDC 40 (KB) to Mean Sea Level	1179.40ft
Vertical Reference Pt	SDC 40 (KB)	SDC 40 (KB) to Ground Level at Slot (Slot #201H)	26.00ft
MD Reference Pt	SDC 40 (KB)	Section Origin	N 0.00, E 0.00 ft
Field Vertical Reference	Mean Sea Level	Section Azimuth	337.52°



# Actual Wellpath Report

John Good Jr BRK 201H AWP Proj: 25398'  
Page 2 of 13



REFERENCE WELLPATH IDENTIFICATION			
Operator	SWN PRODUCTION COMPANY, LLC	Well	John Good Jr BRK 201H
Field	Brooke	API/Legal	
Facility	John Good Jr BRK Pad	Wellbore	John Good Jr BRK 201H AWB
Slot	Slot #201H		

WELLPATH DATA (286 stations) † = interpolated, ‡ = extrapolated station															
MD [ft]	Inclination [°]	Azimuth [°]	TVD [ft]	Vert Sect [ft]	North [ft]	East [ft]	Grid East [US ft]	Grid North [US ft]	Latitude	Longitude	Closure Dist [ft]	Closure Dir [°]	DLS [°/100ft]	Build Rate [°/100ft]	Turn Rate [°/100ft]
0.00†	0.000	330.950	0.00	0.00	0.00	0.00	1757530.46	14608488.44	40°13'25.5006"N	80°34'49.5860"W	0.00	0.000	0.00	0.00	0.00
26.00	0.000	330.950	26.00	0.00	0.00	0.00	1757530.46	14608488.44	40°13'25.5006"N	80°34'49.5860"W	0.00	0.000	0.00	0.00	0.00
50.00	0.180	330.950	50.00	0.04	0.03	-0.02	1757530.44	14608488.47	40°13'25.5010"N	80°34'49.5862"W	0.04	330.950	0.75	0.75	0.00
100.00	0.250	313.280	100.00	0.21	0.18	-0.14	1757530.32	14608488.62	40°13'25.5024"N	80°34'49.5877"W	0.22	322.398	0.19	0.14	-35.34
150.00	0.140	304.350	150.00	0.37	0.29	-0.27	1757530.19	14608488.73	40°13'25.5035"N	80°34'49.5894"W	0.39	317.072	0.23	-0.22	-17.86
200.00	0.270	303.290	200.00	0.51	0.38	-0.41	1757530.05	14608488.82	40°13'25.5044"N	80°34'49.5913"W	0.57	312.863	0.26	0.26	-2.12
250.00	0.280	286.520	250.00	0.69	0.48	-0.63	1757529.83	14608488.92	40°13'25.5054"N	80°34'49.5941"W	0.79	307.534	0.16	0.02	-33.54
296.00	0.190	283.020	296.00	0.80	0.53	-0.81	1757529.65	14608488.97	40°13'25.5059"N	80°34'49.5964"W	0.97	303.288	0.20	-0.20	-7.61
386.00	0.720	242.800	386.00	0.84	0.31	-1.46	1757529.00	14608488.75	40°13'25.5037"N	80°34'49.6048"W	1.49	281.925	0.65	0.59	-44.69
449.00	1.060	235.650	448.99	0.69	-0.20	-2.29	1757528.17	14608488.24	40°13'25.4987"N	80°34'49.6156"W	2.30	264.985	0.57	0.54	-11.35
500.00	1.430	215.250	499.98	0.25	-0.99	-3.05	1757527.41	14608487.45	40°13'25.4910"N	80°34'49.6254"W	3.21	252.069	1.12	0.73	-40.00
550.00	2.150	205.560	549.95	-0.71	-2.34	-3.82	1757526.65	14608486.10	40°13'25.4777"N	80°34'49.6353"W	4.48	238.448	1.56	1.44	-19.38
565.00	2.410	203.300	564.94	-1.11	-2.89	-4.06	1757526.40	14608485.55	40°13'25.4723"N	80°34'49.6385"W	4.98	234.601	1.83	1.73	-15.07
672.00	2.550	201.320	671.84	-4.40	-7.17	-5.82	1757524.65	14608481.27	40°13'25.4300"N	80°34'49.6614"W	9.23	219.051	0.15	0.13	-1.85
760.00	3.400	212.170	759.72	-7.32	-11.20	-7.92	1757522.55	14608477.24	40°13'25.3903"N	80°34'49.6887"W	13.72	215.253	1.15	0.97	12.33
852.00	4.700	214.190	851.49	-10.97	-16.63	-11.49	1757518.98	14608471.82	40°13'25.3368"N	80°34'49.7351"W	20.21	214.639	1.42	1.41	2.20
943.00	5.790	219.400	942.11	-15.19	-23.26	-16.50	1757513.97	14608465.19	40°13'25.2715"N	80°34'49.8001"W	28.52	215.345	1.31	1.20	5.73
1031.00	7.020	218.820	1029.56	-19.86	-30.88	-22.69	1757507.78	14608457.57	40°13'25.1965"N	80°34'49.8803"W	38.32	216.302	1.40	1.40	-0.66
1119.00	8.580	222.480	1116.74	-25.22	-39.91	-30.49	1757499.98	14608448.54	40°13'25.1076"N	80°34'49.9815"W	50.23	217.378	1.86	1.77	4.16
1210.00	9.820	226.070	1206.57	-30.93	-50.30	-40.66	1757489.81	14608438.16	40°13'25.0054"N	80°34'50.1133"W	64.68	218.952	1.50	1.36	3.95
1301.00	11.010	227.220	1296.07	-36.79	-61.59	-52.63	1757477.85	14608426.87	40°13'24.8945"N	80°34'50.2682"W	81.01	220.516	1.33	1.31	1.26
1393.00	13.500	227.420	1385.96	-43.52	-74.82	-66.99	1757463.50	14608413.64	40°13'24.7644"N	80°34'50.4541"W	100.43	221.838	2.71	2.71	0.22
1484.00	15.050	227.460	1474.15	-51.23	-90.00	-83.52	1757446.98	14608398.48	40°13'24.6152"N	80°34'50.6681"W	122.78	222.860	1.70	1.70	0.04
1575.00	15.950	226.640	1561.84	-59.74	-106.57	-101.31	1757429.19	14608381.91	40°13'24.4522"N	80°34'50.8986"W	147.04	223.550	1.02	0.99	-0.90
1700.00	16.300	218.990	1681.94	-74.24	-132.00	-124.84	1757405.67	14608356.49	40°13'24.2020"N	80°34'51.2034"W	181.68	223.403	1.72	0.28	-6.12
1789.00	18.180	216.640	1766.93	-87.33	-152.85	-140.98	1757389.53	14608335.65	40°13'23.9968"N	80°34'51.4128"W	207.94	222.687	2.25	2.11	-2.64
1881.00	17.740	214.220	1854.45	-102.39	-175.96	-157.43	1757373.09	14608312.55	40°13'23.7692"N	80°34'51.6263"W	236.11	221.819	0.94	-0.48	-2.63
1973.00	17.600	216.540	1942.11	-117.25	-198.72	-173.60	1757356.93	14608289.79	40°13'23.5450"N	80°34'51.8360"W	263.87	221.139	0.78	-0.15	2.52
2062.00	17.250	221.560	2027.03	-129.95	-219.41	-190.36	1757340.17	14608269.12	40°13'23.3413"N	80°34'52.0534"W	290.48	220.945	1.73	-0.39	5.64
2153.00	16.000	226.460	2114.23	-140.36	-238.15	-208.41	1757322.13	14608250.39	40°13'23.1570"N	80°34'52.2872"W	316.46	221.190	2.06	-1.37	5.38



# Actual Wellpath Report

John Good Jr BRK 201H AWP Proj: 25398'  
Page 3 of 13



REFERENCE WELLPATH IDENTIFICATION			
Operator	SWN PRODUCTION COMPANY, LLC	Well	John Good Jr BRK 201H
Field	Brooke	API/Legal	
Facility	John Good Jr BRK Pad	Wellbore	John Good Jr BRK 201H AWB
Slot	Slot #201H		

WELLPATH DATA (286 stations)																
MD [ft]	Inclination [°]	Azimuth [°]	TVD [ft]	Vert Sect [ft]	North [ft]	East [ft]	Grid East [US ft]	Grid North [US ft]	Latitude	Longitude	Closure Dist [ft]	Closure Dir [°]	DLS [°/100ft]	Build Rate [°/100ft]	Turn Rate [°/100ft]	
2244.00	14.660	232.290	2202.00	-147.90	-253.83	-226.61	1757303.94	14608234.71	40°13'23.0029"N	80°34'52.5228"W	340.27	221.757	2.24	-1.47	6.41	
2335.00	15.150	239.330	2289.94	-152.62	-266.94	-245.95	1757284.61	14608221.60	40°13'22.8742"N	80°34'52.7729"W	362.97	222.656	2.06	0.54	7.74	
2425.00	16.380	242.280	2376.56	-155.45	-278.84	-267.30	1757263.26	14608209.70	40°13'22.7576"N	80°34'53.0489"W	386.27	223.789	1.63	1.37	3.28	
2514.00	17.990	240.390	2461.58	-158.30	-291.47	-290.36	1757240.21	14608197.08	40°13'22.6339"N	80°34'53.3469"W	411.42	224.890	1.91	1.81	-2.12	
2603.00	16.800	236.070	2546.51	-162.56	-305.44	-312.98	1757217.60	14608183.11	40°13'22.4969"N	80°34'53.6394"W	437.33	225.698	1.97	-1.34	-4.85	
2693.00	15.680	232.080	2632.92	-168.38	-320.18	-333.37	1757197.22	14608168.38	40°13'22.3522"N	80°34'53.9031"W	462.22	226.156	1.76	-1.24	-4.43	
2784.00	15.130	230.020	2720.65	-175.23	-335.37	-352.17	1757178.43	14608153.20	40°13'22.2030"N	80°34'54.1464"W	486.31	226.400	0.85	-0.60	-2.26	
2875.00	14.640	226.420	2808.60	-182.94	-350.93	-369.60	1757161.00	14608137.65	40°13'22.0501"N	80°34'54.3721"W	509.66	226.485	1.15	-0.54	-3.96	
2966.00	15.680	222.950	2896.44	-192.19	-367.86	-386.31	1757144.30	14608120.73	40°13'21.8836"N	80°34'54.5885"W	533.44	226.402	1.52	1.14	-3.81	
3057.00	15.900	225.740	2984.00	-201.93	-385.56	-403.62	1757127.00	14608103.03	40°13'21.7095"N	80°34'54.8127"W	558.18	226.311	0.87	0.24	3.07	
3147.00	15.620	230.810	3070.62	-209.99	-401.82	-421.84	1757108.78	14608086.78	40°13'21.5496"N	80°34'55.0486"W	582.59	226.393	1.56	-0.31	5.63	
3239.00	14.400	230.390	3159.48	-216.92	-416.94	-440.25	1757090.38	14608071.66	40°13'21.4011"N	80°34'55.2869"W	606.35	226.558	1.33	-1.33	-0.46	
3330.00	15.170	227.230	3247.47	-224.38	-432.24	-457.71	1757072.93	14608056.37	40°13'21.2507"N	80°34'55.5129"W	629.55	226.640	1.22	0.85	-3.47	
3420.00	14.600	224.470	3334.45	-232.91	-448.33	-474.30	1757056.34	14608040.28	40°13'21.0924"N	80°34'55.7278"W	652.66	226.613	1.01	-0.63	-3.07	
3512.00	15.070	221.440	3423.39	-242.71	-465.57	-490.34	1757040.31	14608023.05	40°13'20.9228"N	80°34'55.9356"W	676.16	226.484	0.99	0.51	-3.29	
3603.00	15.360	223.060	3511.20	-252.90	-483.24	-506.40	1757024.26	14608005.38	40°13'20.7489"N	80°34'56.1437"W	699.97	226.340	0.57	0.32	1.78	
3694.00	15.170	227.800	3598.99	-261.90	-500.05	-523.45	1757007.21	14607988.58	40°13'20.5836"N	80°34'56.3645"W	723.91	226.310	1.39	-0.21	5.21	
3785.00	15.530	225.780	3686.74	-270.43	-516.54	-541.00	1756989.67	14607972.10	40°13'20.4215"N	80°34'56.5917"W	748.00	226.325	0.71	0.40	-2.22	
3876.00	15.830	221.870	3774.36	-280.32	-534.28	-558.02	1756972.66	14607954.36	40°13'20.2470"N	80°34'56.8122"W	772.55	226.245	1.21	0.33	-4.30	
3967.00	14.790	223.950	3862.13	-290.34	-551.89	-574.36	1756956.32	14607936.77	40°13'20.0737"N	80°34'57.0239"W	796.54	226.143	1.29	-1.14	2.29	
4057.00	14.640	230.980	3949.19	-298.17	-567.32	-591.17	1756939.52	14607921.34	40°13'19.9220"N	80°34'57.2416"W	819.35	226.180	1.99	-0.17	7.81	
4148.00	14.890	230.270	4037.18	-304.91	-582.03	-609.10	1756921.60	14607906.63	40°13'19.7775"N	80°34'57.4736"W	842.47	226.302	0.34	0.27	-0.78	
4238.00	15.030	226.270	4124.13	-312.57	-597.49	-626.42	1756904.28	14607891.18	40°13'19.6255"N	80°34'57.6979"W	865.68	226.354	1.16	0.16	-4.44	
4330.00	14.780	221.430	4213.04	-322.05	-614.54	-642.81	1756887.90	14607874.14	40°13'19.4578"N	80°34'57.9101"W	889.30	226.288	1.38	-0.27	-5.26	
4422.00	14.480	224.260	4302.06	-331.76	-631.57	-658.60	1756872.11	14607857.11	40°13'19.2902"N	80°34'58.1148"W	912.49	226.200	0.84	-0.33	3.08	
4512.00	14.970	227.170	4389.10	-340.24	-647.53	-674.98	1756855.74	14607841.16	40°13'19.1333"N	80°34'58.3269"W	935.36	226.189	0.99	0.54	3.23	
4604.00	15.710	227.780	4477.83	-348.58	-663.98	-692.92	1756837.81	14607824.72	40°13'18.9716"N	80°34'58.5591"W	959.69	226.222	0.82	0.80	0.66	
4695.00	16.130	225.280	4565.34	-357.53	-681.15	-711.03	1756819.71	14607807.55	40°13'18.8027"N	80°34'58.7936"W	984.65	226.229	0.88	0.46	-2.75	
4785.00	16.170	221.800	4651.79	-367.70	-699.29	-728.26	1756802.48	14607789.42	40°13'18.6242"N	80°34'59.0169"W	1009.64	226.162	1.08	0.04	-3.87	
4877.00	15.290	224.920	4740.34	-377.92	-717.43	-745.37	1756785.38	14607771.28	40°13'18.4458"N	80°34'59.2385"W	1034.55	226.094	1.33	-0.96	3.39	

REFERENCE WELLPATH IDENTIFICATION			
Operator	SWN PRODUCTION COMPANY, LLC	Well	John Good Jr BRK 201H
Field	Brooke	API/Legal	
Facility	John Good Jr BRK Pad	Wellbore	John Good Jr BRK 201H AWB
Slot	Slot #201H		

WELLPATH DATA (286 stations)															
MD [ft]	Inclination [°]	Azimuth [°]	TVD [ft]	Vert Sect [ft]	North [ft]	East [ft]	Grid East [US ft]	Grid North [US ft]	Latitude	Longitude	Closure Dist [ft]	Closure Dir [°]	DLS [°/100ft]	Build Rate [°/100ft]	Turn Rate [°/100ft]
4968.00	15.340	229.720	4828.11	-386.21	-733.71	-763.02	1756767.73	14607755.01	40°13'18.2857"N	80°34'59.4671"W	1058.56	226.122	1.39	0.05	5.27
5036.00	15.440	228.420	4893.68	-391.92	-745.54	-776.66	1756754.10	14607743.19	40°13'18.1695"N	80°34'59.6435"W	1076.58	226.171	0.53	0.15	-1.91
5168.00	13.860	235.500	5021.39	-400.97	-766.16	-802.83	1756727.94	14607722.58	40°13'17.9670"N	80°34'59.9822"W	1109.75	226.339	1.81	-1.20	5.36
5259.00	13.620	242.660	5109.79	-404.14	-777.25	-821.33	1756709.44	14607711.49	40°13'17.8582"N	80°35'0.2214"W	1130.80	226.580	1.89	-0.26	7.87
5350.00	12.690	266.960	5198.47	-401.72	-782.71	-840.85	1756689.94	14607706.04	40°13'17.8052"N	80°35'0.4733"W	1148.76	227.051	6.12	-1.02	26.70
5440.00	15.790	287.300	5285.75	-390.59	-779.59	-862.43	1756668.36	14607709.16	40°13'17.8370"N	80°35'0.7513"W	1162.56	227.888	6.49	3.44	22.60
5532.00	20.520	300.280	5373.18	-369.72	-767.72	-888.33	1756642.47	14607721.02	40°13'17.9555"N	80°35'1.0845"W	1174.11	229.165	6.74	5.14	14.11
5622.00	26.440	304.980	5455.70	-340.24	-748.26	-918.40	1756612.42	14607740.47	40°13'18.1492"N	80°35'1.4709"W	1184.63	230.829	6.89	6.58	5.22
5715.00	32.120	309.170	5536.79	-300.99	-720.75	-954.56	1756576.26	14607767.97	40°13'18.4227"N	80°35'1.9355"W	1196.11	232.945	6.49	6.11	4.51
5806.00	38.810	315.480	5610.89	-253.20	-685.09	-993.37	1756537.47	14607803.62	40°13'18.7770"N	80°35'2.4336"W	1206.70	235.408	8.37	7.35	6.93
5898.00	44.960	325.290	5679.43	-194.59	-637.71	-1032.17	1756498.68	14607850.97	40°13'19.2469"N	80°35'2.9310"W	1213.29	238.291	9.75	6.68	10.66
5989.00	48.480	330.580	5741.83	-129.31	-581.57	-1067.24	1756463.63	14607907.09	40°13'19.8033"N	80°35'3.3796"W	1215.41	241.413	5.73	3.87	5.81
6081.00	54.590	333.060	5799.03	-57.67	-518.08	-1101.18	1756429.71	14607970.56	40°13'20.4322"N	80°35'3.8133"W	1216.97	244.804	6.97	6.64	2.70
6172.00	65.490	335.310	5844.41	20.92	-447.19	-1135.38	1756395.52	14608041.43	40°13'21.1344"N	80°35'4.2499"W	1220.27	248.502	12.17	11.98	2.47
6264.00	74.900	338.120	5875.56	107.36	-367.75	-1169.50	1756361.42	14608120.83	40°13'21.9209"N	80°35'4.6849"W	1225.95	252.544	10.62	10.23	3.05
6356.00	84.550	342.240	5891.95	197.66	-282.69	-1200.10	1756330.82	14608205.86	40°13'22.7629"N	80°35'5.0743"W	1232.95	256.745	11.37	10.49	4.48
6446.00	90.860	339.910	5895.56	287.36	-197.68	-1229.25	1756301.68	14608290.84	40°13'23.6044"N	80°35'5.4450"W	1245.05	260.864	7.47	7.01	-2.59
6537.00	90.460	338.870	5894.51	378.31	-112.51	-1261.28	1756269.66	14608375.98	40°13'24.4475"N	80°35'5.8528"W	1266.29	264.903	1.22	-0.44	-1.14
6627.00	90.310	338.810	5893.90	468.28	-28.58	-1293.77	1756237.19	14608459.87	40°13'25.2783"N	80°35'6.2666"W	1294.09	268.735	0.18	-0.17	-0.07
6718.00	90.860	338.570	5892.97	559.26	56.20	-1326.84	1756204.13	14608544.61	40°13'26.1176"N	80°35'6.6878"W	1328.03	272.425	0.66	0.60	-0.26
6809.00	90.580	341.310	5891.83	650.16	141.66	-1358.05	1756172.94	14608630.04	40°13'26.9636"N	80°35'7.0849"W	1365.42	275.955	3.03	-0.31	3.01
6901.00	89.420	340.100	5891.83	742.01	228.49	-1388.45	1756142.55	14608716.84	40°13'27.8230"N	80°35'7.4716"W	1407.12	279.345	1.82	-1.26	-1.32
6992.00	89.820	340.040	5892.43	832.92	314.04	-1419.46	1756111.54	14608802.36	40°13'28.6698"N	80°35'7.8663"W	1453.79	282.475	0.44	0.44	-0.07
7083.00	89.630	339.920	5892.87	923.84	399.54	-1450.62	1756080.40	14608887.82	40°13'29.5162"N	80°35'8.2628"W	1504.63	285.399	0.25	-0.21	-0.13
7173.00	90.340	340.420	5892.89	1013.74	484.20	-1481.15	1756049.88	14608972.45	40°13'30.3542"N	80°35'8.6513"W	1558.28	288.103	0.96	0.79	0.56
7264.00	91.050	340.210	5891.79	1104.62	569.87	-1511.80	1756019.25	14609058.09	40°13'31.2022"N	80°35'9.0413"W	1615.64	290.654	0.81	0.78	-0.23
7355.00	90.680	340.020	5890.42	1195.52	655.44	-1542.75	1755988.31	14609143.63	40°13'32.0492"N	80°35'9.4352"W	1676.21	293.018	0.46	-0.41	-0.21
7446.00	90.920	340.330	5889.15	1286.41	741.04	-1573.61	1755957.46	14609229.19	40°13'32.8965"N	80°35'9.8278"W	1739.36	295.217	0.43	0.26	0.34
7537.00	90.890	341.680	5887.71	1377.23	827.07	-1603.22	1755927.86	14609315.19	40°13'33.7480"N	80°35'10.2045"W	1803.99	297.288	1.48	-0.03	1.48
7629.00	90.650	338.580	5886.47	1469.12	913.57	-1634.48	1755896.61	14609401.66	40°13'34.6043"N	80°35'10.6023"W	1872.47	299.202	3.38	-0.26	-3.37

REFERENCE WELLPATH IDENTIFICATION			
Operator	SWN PRODUCTION COMPANY, LLC	Well	John Good Jr BRK 201H
Field	Brooke	API/Legal	
Facility	John Good Jr BRK Pad	Wellbore	John Good Jr BRK 201H AWB
Slot	Slot #201H		

WELLPATH DATA (286 stations)															
MD [ft]	Inclination [°]	Azimuth [°]	TVD [ft]	Vert Sect [ft]	North [ft]	East [ft]	Grid East [US ft]	Grid North [US ft]	Latitude	Longitude	Closure Dist [ft]	Closure Dir [°]	DLS [°/100ft]	Build Rate [°/100ft]	Turn Rate [°/100ft]
7720.00	91.020	340.350	5885.15	1560.05	998.78	-1666.40	1755864.70	14609486.83	40°13'35.4477"N	80°35'11.0087"W	1942.79	300.937	1.99	0.41	1.95
7812.00	90.650	341.560	5883.80	1651.87	1085.73	-1696.42	1755834.70	14609573.75	40°13'36.3083"N	80°35'11.3904"W	2014.11	302.620	1.38	-0.40	1.32
7903.00	90.490	339.720	5882.90	1742.73	1171.58	-1726.58	1755804.55	14609659.57	40°13'37.1581"N	80°35'11.7741"W	2086.55	304.159	2.03	-0.18	-2.02
7994.00	91.260	342.260	5881.51	1833.55	1257.60	-1756.22	1755774.92	14609745.55	40°13'38.0094"N	80°35'12.1510"W	2160.06	305.606	2.92	0.85	2.79
8085.00	90.770	341.050	5879.90	1924.29	1343.96	-1784.85	1755746.30	14609831.88	40°13'38.8642"N	80°35'12.5150"W	2234.26	306.979	1.43	-0.54	-1.33
8175.00	90.430	340.570	5878.95	2014.14	1428.95	-1814.43	1755716.73	14609916.84	40°13'39.7054"N	80°35'12.8913"W	2309.56	308.222	0.65	-0.38	-0.53
8267.00	90.460	340.340	5878.24	2106.01	1515.65	-1845.21	1755685.96	14610003.50	40°13'40.5635"N	80°35'13.2829"W	2387.88	309.399	0.25	0.03	-0.25
8358.00	90.580	340.830	5877.41	2196.88	1601.47	-1875.46	1755655.72	14610089.29	40°13'41.4130"N	80°35'13.6677"W	2466.18	310.494	0.55	0.13	0.54
8449.00	91.020	341.360	5876.14	2287.69	1687.55	-1904.94	1755626.25	14610175.34	40°13'42.2650"N	80°35'14.0427"W	2544.92	311.537	0.76	0.48	0.58
8539.00	90.220	342.000	5875.17	2377.45	1772.98	-1933.23	1755597.98	14610260.74	40°13'43.1105"N	80°35'14.4022"W	2623.14	312.524	1.14	-0.89	0.71
8630.00	91.050	341.750	5874.16	2468.18	1859.46	-1961.54	1755569.68	14610347.18	40°13'43.9664"N	80°35'14.7620"W	2702.82	313.470	0.95	0.91	-0.27
8721.00	91.170	341.530	5872.40	2558.93	1945.81	-1990.19	1755541.04	14610433.50	40°13'44.8210"N	80°35'15.1263"W	2783.35	314.354	0.28	0.13	-0.24
8811.00	90.830	340.580	5870.83	2648.74	2030.92	-2019.41	1755511.83	14610518.58	40°13'45.6634"N	80°35'15.4979"W	2864.03	315.163	1.12	-0.38	-1.06
8902.00	90.680	337.920	5869.63	2739.69	2116.01	-2051.64	1755479.61	14610603.63	40°13'46.5057"N	80°35'15.9084"W	2947.32	315.885	2.93	-0.16	-2.92
8993.00	90.890	338.970	5868.38	2830.66	2200.63	-2085.07	1755446.19	14610688.22	40°13'47.3435"N	80°35'16.3343"W	3031.55	316.545	1.18	0.23	1.15
9084.00	90.860	339.710	5866.99	2921.61	2285.77	-2117.18	1755414.10	14610773.33	40°13'48.1863"N	80°35'16.7431"W	3115.63	317.193	0.81	-0.03	0.81
9175.00	90.680	338.810	5865.77	3012.56	2370.86	-2149.40	1755381.89	14610858.39	40°13'49.0286"N	80°35'17.1534"W	3200.14	317.805	1.01	-0.20	-0.99
9267.00	90.890	338.370	5864.51	3104.53	2456.51	-2182.98	1755348.33	14610944.00	40°13'49.8765"N	80°35'17.5812"W	3286.31	318.374	0.53	0.23	-0.48
9357.00	90.520	337.900	5863.40	3194.52	2540.03	-2216.49	1755314.82	14611027.49	40°13'50.7033"N	80°35'18.0084"W	3371.14	318.891	0.66	-0.41	-0.52
9448.00	90.710	339.150	5862.42	3285.50	2624.70	-2249.81	1755281.52	14611112.13	40°13'51.5416"N	80°35'18.4328"W	3456.98	319.398	1.39	0.21	1.37
9539.00	90.920	338.720	5861.13	3376.46	2709.61	-2282.51	1755248.83	14611197.01	40°13'52.3822"N	80°35'18.8494"W	3542.86	319.890	0.53	0.23	-0.47
9630.00	90.620	338.210	5859.91	3467.44	2794.25	-2315.91	1755215.44	14611281.61	40°13'53.2201"N	80°35'19.2749"W	3629.23	320.348	0.65	-0.33	-0.56
9720.00	90.680	338.380	5858.89	3557.42	2877.87	-2349.19	1755182.18	14611365.19	40°13'54.0479"N	80°35'19.6991"W	3714.94	320.775	0.20	0.07	0.19
9811.00	90.980	337.600	5857.57	3648.41	2962.22	-2383.29	1755148.09	14611449.52	40°13'54.8831"N	80°35'20.1337"W	3801.95	321.181	0.92	0.33	-0.86
9902.00	90.710	338.330	5856.23	3739.40	3046.57	-2417.43	1755113.96	14611533.83	40°13'55.7181"N	80°35'20.5688"W	3889.16	321.568	0.86	-0.30	0.80
9993.00	90.950	339.320	5854.91	3830.36	3131.41	-2450.30	1755081.11	14611618.64	40°13'56.5580"N	80°35'20.9875"W	3976.14	321.957	1.12	0.26	1.09
10082.00	90.710	339.740	5853.62	3919.30	3214.78	-2481.42	1755050.00	14611701.98	40°13'57.3833"N	80°35'21.3837"W	4061.07	322.336	0.54	-0.27	0.47
10173.00	90.580	339.140	5852.59	4010.24	3299.98	-2513.37	1755018.06	14611787.15	40°13'58.2267"N	80°35'21.7907"W	4148.12	322.706	0.67	-0.14	-0.66
10263.00	90.650	338.700	5851.63	4100.21	3383.95	-2545.74	1754985.70	14611871.09	40°13'59.0580"N	80°35'22.2030"W	4234.61	323.046	0.50	0.08	-0.49
10356.00	90.520	338.030	5850.68	4193.19	3470.40	-2580.03	1754951.43	14611957.50	40°13'59.9137"N	80°35'22.6399"W	4324.37	323.371	0.73	-0.14	-0.72



# Actual Wellpath Report

John Good Jr BRK 201H AWP Proj: 25398'  
Page 6 of 13



REFERENCE WELLPATH IDENTIFICATION			
Operator	SWN PRODUCTION COMPANY, LLC	Well	John Good Jr BRK 201H
Field	Brooke	API/Legal	
Facility	John Good Jr BRK Pad	Wellbore	John Good Jr BRK 201H AWB
Slot	Slot #201H		

WELLPATH DATA (286 stations)															
MD [ft]	Inclination [°]	Azimuth [°]	TVD [ft]	Vert Sect [ft]	North [ft]	East [ft]	Grid East [US ft]	Grid North [US ft]	Latitude	Longitude	Closure Dist [ft]	Closure Dir [°]	DLS [°/100ft]	Build Rate [°/100ft]	Turn Rate [°/100ft]
10447.00	90.770	339.310	5849.65	4284.17	3555.16	-2613.13	1754918.34	14612042.22	40°14'0.7528"N	80°35'23.0616"W	4412.21	323.683	1.43	0.27	1.41
10538.00	90.680	338.870	5848.50	4375.13	3640.16	-2645.60	1754885.88	14612127.19	40°14'1.5943"N	80°35'23.4753"W	4499.99	323.991	0.49	-0.10	-0.48
10629.00	90.740	341.260	5847.38	4466.02	3725.69	-2676.62	1754854.87	14612212.69	40°14'2.4409"N	80°35'23.8702"W	4587.49	324.306	2.63	0.07	2.63
10720.00	90.340	339.950	5846.52	4556.88	3811.52	-2706.84	1754824.67	14612298.49	40°14'3.2905"N	80°35'24.2547"W	4674.90	324.619	1.51	-0.44	-1.44
10811.00	90.580	341.250	5845.79	4647.75	3897.35	-2737.07	1754794.45	14612384.28	40°14'4.1400"N	80°35'24.6393"W	4762.44	324.920	1.45	0.26	1.43
10901.00	90.490	341.050	5844.95	4737.56	3982.52	-2766.14	1754765.39	14612469.42	40°14'4.9829"N	80°35'25.0091"W	4848.92	325.217	0.24	-0.10	-0.22
10992.00	91.750	341.940	5843.17	4828.33	4068.79	-2795.02	1754736.52	14612555.66	40°14'5.8368"N	80°35'25.3763"W	4936.32	325.513	1.70	1.38	0.98
11083.00	90.980	341.510	5841.00	4919.05	4155.18	-2823.55	1754708.01	14612642.01	40°14'6.6918"N	80°35'25.7390"W	5023.74	325.803	0.97	-0.85	-0.47
11174.00	90.620	341.810	5839.73	5009.81	4241.55	-2852.18	1754679.39	14612728.35	40°14'7.5466"N	80°35'26.1030"W	5111.32	326.082	0.51	-0.40	0.33
11265.00	90.250	340.220	5839.04	5100.63	4327.59	-2881.78	1754649.79	14612814.36	40°14'8.3982"N	80°35'26.4795"W	5199.30	326.340	1.79	-0.41	-1.75
11355.00	90.620	340.910	5838.36	5190.50	4412.46	-2911.72	1754619.86	14612899.20	40°14'9.2382"N	80°35'26.8606"W	5286.58	326.580	0.87	0.41	0.77
11446.00	91.140	341.780	5836.96	5281.29	4498.67	-2940.83	1754590.77	14612985.37	40°14'10.0914"N	80°35'27.2308"W	5374.62	326.827	1.11	0.57	0.96
11537.00	91.200	341.650	5835.10	5372.02	4585.06	-2969.37	1754562.23	14613071.73	40°14'10.9464"N	80°35'27.5937"W	5462.59	327.072	0.16	0.07	-0.14
11627.00	91.320	341.610	5833.12	5461.77	4670.45	-2997.73	1754533.89	14613157.09	40°14'11.7915"N	80°35'27.9542"W	5549.73	327.306	0.14	0.13	-0.04
11718.00	90.920	341.800	5831.34	5552.51	4756.83	-3026.29	1754505.34	14613243.44	40°14'12.6464"N	80°35'28.3174"W	5637.90	327.536	0.49	-0.44	0.21
11810.00	90.830	341.070	5829.94	5644.28	4844.03	-3055.58	1754476.06	14613330.60	40°14'13.5095"N	80°35'28.6898"W	5727.24	327.757	0.80	-0.10	-0.79
11900.00	91.940	339.150	5827.76	5734.16	4928.64	-3086.19	1754445.47	14613415.17	40°14'14.3469"N	80°35'29.0795"W	5815.15	327.946	2.46	1.23	-2.13
11991.00	90.770	336.960	5825.61	5825.12	5013.01	-3120.18	1754411.48	14613499.52	40°14'15.1822"N	80°35'29.5128"W	5904.73	328.101	2.73	-1.29	-2.41
12082.00	91.020	336.950	5824.19	5916.11	5096.74	-3155.80	1754375.88	14613583.21	40°14'16.0112"N	80°35'29.9671"W	5994.65	328.235	0.27	0.27	-0.01
12172.00	90.740	336.930	5822.81	6006.09	5179.54	-3191.05	1754340.64	14613665.98	40°14'16.8310"N	80°35'30.4167"W	6083.62	328.363	0.31	-0.31	-0.02
12263.00	90.770	336.360	5821.61	6097.07	5263.08	-3227.12	1754304.59	14613749.48	40°14'17.6582"N	80°35'30.8769"W	6173.67	328.485	0.63	0.03	-0.63
12354.00	90.250	336.360	5820.80	6188.05	5346.44	-3263.61	1754268.11	14613832.81	40°14'18.4836"N	80°35'31.3424"W	6263.83	328.599	0.57	-0.57	0.00
12444.00	90.800	335.480	5819.97	6278.01	5428.60	-3300.33	1754231.41	14613914.94	40°14'19.2972"N	80°35'31.8110"W	6353.10	328.702	1.15	0.61	-0.98
12535.00	90.770	336.460	5818.72	6368.97	5511.70	-3337.38	1754194.37	14613998.01	40°14'20.1201"N	80°35'32.2839"W	6443.37	328.805	1.08	-0.03	1.08
12626.00	90.550	336.000	5817.68	6459.94	5594.98	-3374.06	1754157.71	14614081.26	40°14'20.9446"N	80°35'32.7519"W	6533.61	328.908	0.56	-0.24	-0.51
12716.00	90.950	337.450	5816.50	6549.92	5677.64	-3409.62	1754122.16	14614163.89	40°14'21.7632"N	80°35'33.2055"W	6622.77	329.014	1.67	0.44	1.61
12807.00	91.020	337.920	5814.93	6640.91	5761.82	-3444.16	1754087.63	14614248.03	40°14'22.5965"N	80°35'33.6460"W	6712.73	329.131	0.52	0.08	0.52
12898.00	90.620	337.100	5813.63	6731.90	5845.89	-3478.97	1754052.84	14614332.07	40°14'23.4288"N	80°35'34.0898"W	6802.76	329.243	1.00	-0.44	-0.90
12988.00	90.740	337.030	5812.56	6821.89	5928.77	-3514.04	1754017.78	14614414.91	40°14'24.2494"N	80°35'34.5371"W	6891.93	329.344	0.15	0.13	-0.08
13079.00	91.200	338.000	5811.02	6912.87	6012.83	-3548.83	1753983.00	14614498.95	40°14'25.0818"N	80°35'34.9808"W	6982.01	329.450	1.18	0.51	1.07



# Actual Wellpath Report

John Good Jr BRK 201H AWP Proj: 25398'  
Page 7 of 13



REFERENCE WELLPATH IDENTIFICATION			
Operator	SWN PRODUCTION COMPANY, LLC	Well	John Good Jr BRK 201H
Field	Brooke	API/Legal	
Facility	John Good Jr BRK Pad	Wellbore	John Good Jr BRK 201H AWB
Slot	Slot #201H		

WELLPATH DATA (286 stations)															
MD [ft]	Inclination [°]	Azimuth [°]	TVD [ft]	Vert Sect [ft]	North [ft]	East [ft]	Grid East [US ft]	Grid North [US ft]	Latitude	Longitude	Closure Dist [ft]	Closure Dir [°]	DLS [°/100ft]	Build Rate [°/100ft]	Turn Rate [°/100ft]
13170.00	91.230	337.780	5809.09	7003.85	6097.12	-3583.08	1753948.77	14614583.21	40°14'25.9162"N	80°35'35.4174"W	7072.01	329.559	0.24	0.03	-0.24
13260.00	90.490	337.380	5807.74	7093.84	6180.31	-3617.40	1753914.46	14614666.36	40°14'26.7398"N	80°35'35.8551"W	7161.13	329.659	0.93	-0.82	-0.44
13351.00	91.020	335.830	5806.54	7184.82	6263.82	-3653.53	1753878.34	14614749.84	40°14'27.5667"N	80°35'36.3160"W	7251.46	329.746	1.80	0.58	-1.70
13441.00	90.150	335.320	5805.62	7274.76	6345.76	-3690.74	1753841.15	14614831.75	40°14'28.3781"N	80°35'36.7910"W	7341.00	329.817	1.12	-0.97	-0.57
13532.00	91.200	336.610	5804.55	7365.72	6428.86	-3727.80	1753804.10	14614914.82	40°14'29.2010"N	80°35'37.2640"W	7431.47	329.893	1.83	1.15	1.42
13623.00	90.860	337.160	5802.92	7456.70	6512.54	-3763.52	1753768.39	14614998.46	40°14'30.0295"N	80°35'37.7196"W	7521.79	329.977	0.71	-0.37	0.60
13714.00	90.860	335.680	5801.55	7547.67	6595.93	-3799.92	1753732.01	14615081.82	40°14'30.8552"N	80°35'38.1841"W	7612.21	330.054	1.63	0.00	-1.63
13807.00	90.890	337.560	5800.13	7640.64	6681.28	-3836.82	1753695.13	14615167.14	40°14'31.7003"N	80°35'38.6548"W	7704.59	330.133	2.02	0.03	2.02
13900.00	90.770	336.230	5798.78	7733.62	6766.81	-3873.31	1753658.65	14615252.64	40°14'32.5471"N	80°35'39.1203"W	7796.94	330.213	1.44	-0.13	-1.43
13991.00	90.890	336.510	5797.47	7824.59	6850.17	-3909.78	1753622.19	14615335.97	40°14'33.3725"N	80°35'39.5857"W	7887.41	330.284	0.33	0.13	0.31
14082.00	90.950	336.770	5796.00	7915.57	6933.70	-3945.85	1753586.13	14615419.46	40°14'34.1996"N	80°35'40.0460"W	7977.84	330.357	0.29	0.07	0.29
14173.00	91.260	337.220	5794.25	8006.55	7017.45	-3981.41	1753550.59	14615503.18	40°14'35.0287"N	80°35'40.4996"W	8068.22	330.431	0.60	0.34	0.49
14264.00	90.920	336.670	5792.52	8097.53	7101.16	-4017.04	1753514.97	14615586.86	40°14'35.8576"N	80°35'40.9542"W	8158.63	330.504	0.71	-0.37	-0.60
14355.00	91.020	336.980	5790.98	8188.51	7184.81	-4052.85	1753479.18	14615670.47	40°14'36.6858"N	80°35'41.4110"W	8249.06	330.573	0.36	0.11	0.34
14448.00	90.680	335.820	5789.60	8281.48	7270.02	-4090.08	1753441.96	14615755.65	40°14'37.5295"N	80°35'41.8860"W	8341.58	330.638	1.30	-0.37	-1.25
14540.00	90.250	336.860	5788.85	8373.46	7354.28	-4127.00	1753405.06	14615839.88	40°14'38.3639"N	80°35'42.3571"W	8433.12	330.700	1.22	-0.47	1.13
14633.00	90.250	336.620	5788.45	8466.45	7439.72	-4163.72	1753368.35	14615925.29	40°14'39.2098"N	80°35'42.8257"W	8525.61	330.766	0.26	0.00	-0.26
14726.00	90.090	335.930	5788.17	8559.42	7524.86	-4201.14	1753330.94	14616010.40	40°14'40.0528"N	80°35'43.3032"W	8618.19	330.825	0.76	-0.17	-0.74
14818.00	90.090	336.430	5788.02	8651.40	7609.03	-4238.29	1753293.80	14616094.53	40°14'40.8862"N	80°35'43.7774"W	8709.79	330.882	0.54	0.00	0.54
14911.00	90.430	336.700	5787.60	8744.38	7694.35	-4275.28	1753256.83	14616179.82	40°14'41.7310"N	80°35'44.2494"W	8802.33	330.942	0.47	0.37	0.29
15004.00	90.280	337.020	5787.03	8837.37	7779.87	-4311.83	1753220.30	14616265.30	40°14'42.5777"N	80°35'44.7156"W	8894.84	331.004	0.38	-0.16	0.34
15096.00	90.430	336.750	5786.46	8929.37	7864.48	-4347.94	1753184.20	14616349.88	40°14'43.4155"N	80°35'45.1764"W	8986.36	331.064	0.34	0.16	-0.29
15188.00	90.280	336.780	5785.89	9021.36	7949.02	-4384.24	1753147.92	14616434.39	40°14'44.2525"N	80°35'45.6395"W	9077.91	331.121	0.17	-0.16	0.03
15281.00	90.550	336.900	5785.21	9114.35	8034.52	-4420.81	1753111.35	14616519.86	40°14'45.0991"N	80°35'46.1061"W	9170.45	331.179	0.32	0.29	0.13
15371.00	90.830	336.450	5784.13	9204.33	8117.16	-4456.45	1753075.74	14616602.46	40°14'45.9173"N	80°35'46.5608"W	9260.03	331.233	0.59	0.31	-0.50
15462.00	90.740	336.760	5782.88	9295.31	8200.67	-4492.58	1753039.62	14616685.94	40°14'46.7442"N	80°35'47.0218"W	9350.63	331.285	0.35	-0.10	0.34
15555.00	90.550	336.770	5781.84	9388.30	8286.12	-4529.26	1753002.95	14616771.36	40°14'47.5902"N	80°35'47.4899"W	9443.20	331.339	0.20	-0.20	0.01
15647.00	90.650	337.200	5780.87	9480.29	8370.79	-4565.23	1752966.99	14616856.00	40°14'48.4286"N	80°35'47.9488"W	9534.75	331.393	0.48	0.11	0.47
15739.00	90.830	335.850	5779.68	9572.26	8455.17	-4601.87	1752930.36	14616940.34	40°14'49.2640"N	80°35'48.4164"W	9626.38	331.442	1.48	0.20	-1.47
15830.00	90.710	335.610	5778.46	9663.21	8538.12	-4639.27	1752892.98	14617023.26	40°14'50.0854"N	80°35'48.8939"W	9717.12	331.482	0.29	-0.13	-0.26





# Actual Wellpath Report

John Good Jr BRK 201H AWP Proj: 25398'  
Page 8 of 13



REFERENCE WELLPATH IDENTIFICATION			
Operator	SWN PRODUCTION COMPANY, LLC	Well	John Good Jr BRK 201H
Field	Brooke	API/Legal	
Facility	John Good Jr BRK Pad	Wellbore	John Good Jr BRK 201H AWB
Slot	Slot #201H		

WELLPATH DATA (286 stations)															
MD [ft]	Inclination [°]	Azimuth [°]	TVD [ft]	Vert Sect [ft]	North [ft]	East [ft]	Grid East [US ft]	Grid North [US ft]	Latitude	Longitude	Closure Dist [ft]	Closure Dir [°]	DLS [°/100ft]	Build Rate [°/100ft]	Turn Rate [°/100ft]
15922.00	90.770	335.610	5777.27	9755.15	8621.90	-4677.26	1752855.00	14617107.01	40°14'50.9150"N	80°35'49.3789"W	9808.87	331.521	0.07	0.07	0.00
16014.00	90.770	335.870	5776.04	9847.10	8705.77	-4715.06	1752817.22	14617190.85	40°14'51.7455"N	80°35'49.8614"W	9900.62	331.560	0.28	0.00	0.28
16106.00	90.490	336.120	5775.02	9939.06	8789.81	-4752.48	1752779.81	14617274.85	40°14'52.5776"N	80°35'50.3391"W	9992.34	331.601	0.41	-0.30	0.27
16197.00	90.000	335.760	5774.64	10030.03	8872.90	-4789.58	1752742.73	14617357.91	40°14'53.4004"N	80°35'50.8127"W	10083.08	331.640	0.67	-0.54	-0.40
16290.00	90.030	335.530	5774.61	10122.98	8957.62	-4827.94	1752704.39	14617442.60	40°14'54.2393"N	80°35'51.3023"W	10175.85	331.676	0.25	0.03	-0.25
16383.00	90.680	336.190	5774.04	10215.93	9042.49	-4865.97	1752666.37	14617527.44	40°14'55.0796"N	80°35'51.7878"W	10268.61	331.714	1.00	0.70	0.71
16475.00	91.290	337.020	5772.45	10307.91	9126.91	-4902.49	1752629.86	14617611.83	40°14'55.9155"N	80°35'52.2539"W	10360.26	331.758	1.12	0.66	0.90
16566.00	90.890	336.050	5770.72	10398.88	9210.37	-4938.72	1752593.65	14617695.25	40°14'56.7419"N	80°35'52.7163"W	10450.93	331.799	1.15	-0.44	-1.07
16657.00	90.740	335.840	5769.43	10489.83	9293.46	-4975.81	1752556.57	14617778.31	40°14'57.5646"N	80°35'53.1897"W	10541.68	331.835	0.28	-0.16	-0.23
16747.00	90.650	335.830	5768.34	10579.79	9375.57	-5012.65	1752519.75	14617860.38	40°14'58.3776"N	80°35'53.6601"W	10631.46	331.869	0.10	-0.10	-0.01
16838.00	90.770	335.660	5767.21	10670.74	9458.53	-5050.03	1752482.38	14617943.31	40°14'59.1991"N	80°35'54.1373"W	10722.25	331.902	0.23	0.13	-0.19
16929.00	90.770	335.750	5765.99	10761.68	9541.46	-5087.47	1752444.96	14618026.21	40°15'0.0203"N	80°35'54.6153"W	10813.04	331.934	0.10	0.00	0.10
17019.00	90.710	335.610	5764.82	10851.63	9623.47	-5124.53	1752407.91	14618108.19	40°15'0.8323"N	80°35'55.0884"W	10902.84	331.965	0.17	-0.07	-0.16
17111.00	90.680	335.460	5763.71	10943.57	9707.20	-5162.63	1752369.83	14618191.89	40°15'1.6615"N	80°35'55.5749"W	10994.66	331.994	0.17	-0.03	-0.16
17202.00	90.620	335.840	5762.68	11034.51	9790.10	-5200.14	1752332.32	14618274.76	40°15'2.4823"N	80°35'56.0539"W	11085.47	332.024	0.42	-0.07	0.42
17292.00	90.710	335.640	5761.63	11124.46	9872.15	-5237.12	1752295.36	14618356.77	40°15'3.2947"N	80°35'56.5260"W	11175.27	332.054	0.24	0.10	-0.22
17384.00	90.680	335.530	5760.51	11216.40	9955.91	-5275.15	1752257.35	14618440.51	40°15'4.1242"N	80°35'57.0115"W	11267.09	332.083	0.12	-0.03	-0.12
17474.00	90.740	335.420	5759.40	11306.34	10037.79	-5312.50	1752220.01	14618522.35	40°15'4.9349"N	80°35'57.4885"W	11356.93	332.110	0.14	0.07	-0.12
17567.00	90.740	335.620	5758.20	11399.27	10122.42	-5351.04	1752181.49	14618606.95	40°15'5.7730"N	80°35'57.9806"W	11449.76	332.138	0.22	0.00	0.22
17657.00	90.830	335.350	5756.97	11489.21	10204.30	-5388.38	1752144.17	14618688.80	40°15'6.5838"N	80°35'58.4574"W	11539.60	332.164	0.32	0.10	-0.30
17749.00	90.620	335.460	5755.80	11581.14	10287.95	-5426.66	1752105.89	14618772.41	40°15'7.4121"N	80°35'58.9463"W	11631.44	332.189	0.26	-0.23	0.12
17839.00	90.370	335.490	5755.02	11671.08	10369.82	-5464.02	1752068.55	14618854.26	40°15'8.2228"N	80°35'59.4233"W	11721.29	332.215	0.28	-0.28	0.03
17931.00	90.490	336.350	5754.33	11763.04	10453.81	-5501.56	1752031.03	14618938.21	40°15'9.0545"N	80°35'59.9025"W	11813.10	332.243	0.94	0.13	0.93
18022.00	90.800	336.080	5753.31	11854.01	10537.08	-5538.25	1751994.35	14619021.45	40°15'9.8789"N	80°36'0.3710"W	11903.88	332.274	0.45	0.34	-0.30
18114.00	90.580	336.050	5752.20	11945.97	10621.16	-5575.58	1751957.04	14619105.50	40°15'10.7115"N	80°36'0.8474"W	11995.67	332.303	0.24	-0.24	-0.03
18204.00	90.950	336.090	5751.00	12035.94	10703.42	-5612.08	1751920.55	14619187.72	40°15'11.5259"N	80°36'1.3134"W	12085.47	332.331	0.41	0.41	0.04
18296.00	90.860	335.880	5749.55	12127.89	10787.44	-5649.51	1751883.13	14619271.72	40°15'12.3579"N	80°36'1.7914"W	12177.27	332.358	0.25	-0.10	-0.23
18389.00	90.860	336.380	5748.15	12220.85	10872.48	-5687.14	1751845.51	14619356.72	40°15'13.1999"N	80°36'2.2718"W	12270.06	332.387	0.54	0.00	0.54
18481.00	90.550	335.370	5747.02	12312.81	10956.44	-5724.74	1751807.93	14619440.64	40°15'14.0312"N	80°36'2.7518"W	12361.88	332.413	1.15	-0.34	-1.10
18573.00	91.750	335.020	5745.17	12404.71	11039.93	-5763.33	1751769.35	14619524.10	40°15'14.8580"N	80°36'3.2447"W	12453.76	332.433	1.36	1.30	-0.38



# Actual Wellpath Report

John Good Jr BRK 201H AWP Proj: 25398'  
Page 9 of 13



REFERENCE WELLPATH IDENTIFICATION			
Operator	SWN PRODUCTION COMPANY, LLC	Well	John Good Jr BRK 201H
Field	Brooke	API/Legal	
Facility	John Good Jr BRK Pad	Wellbore	John Good Jr BRK 201H AWP
Slot	Slot #201H		

WELLPATH DATA (286 stations)															
MD [ft]	Inclination [°]	Azimuth [°]	TVD [ft]	Vert Sect [ft]	North [ft]	East [ft]	Grid East [US ft]	Grid North [US ft]	Latitude	Longitude	Closure Dist [ft]	Closure Dir [°]	DLS [°/100ft]	Build Rate [°/100ft]	Turn Rate [°/100ft]
18664.00	91.290	335.420	5742.76	12495.61	11122.52	-5801.46	1751731.24	14619606.66	40°15'15.6759"N	80°36'3.7316"W	12544.62	332.454	0.67	-0.51	0.44
18756.00	91.380	335.710	5740.61	12587.53	11206.26	-5839.51	1751693.21	14619690.37	40°15'16.5050"N	80°36'4.2175"W	12636.46	332.476	0.33	0.10	0.32
18848.00	90.950	336.010	5738.74	12679.47	11290.19	-5877.12	1751655.61	14619774.27	40°15'17.3361"N	80°36'4.6978"W	12728.28	332.501	0.57	-0.47	0.33
18938.00	90.950	335.600	5737.25	12769.42	11372.28	-5914.00	1751618.74	14619856.32	40°15'18.1489"N	80°36'5.1687"W	12818.12	332.524	0.46	0.00	-0.46
19029.00	90.890	335.540	5735.79	12860.35	11455.12	-5951.64	1751581.12	14619939.13	40°15'18.9692"N	80°36'5.6492"W	12908.98	332.545	0.09	-0.07	-0.07
19119.00	90.460	335.580	5734.73	12950.29	11537.05	-5988.87	1751543.90	14620021.03	40°15'19.7805"N	80°36'6.1247"W	12998.85	332.566	0.48	-0.48	0.04
19210.00	90.860	335.990	5733.68	13041.24	11620.04	-6026.19	1751506.60	14620103.99	40°15'20.6022"N	80°36'6.6013"W	13089.70	332.589	0.63	0.44	0.45
19301.00	90.370	336.020	5732.71	13132.21	11703.17	-6063.19	1751469.61	14620187.09	40°15'21.4253"N	80°36'7.0737"W	13180.53	332.612	0.54	-0.54	0.03
19391.00	90.310	335.580	5732.17	13222.17	11785.26	-6100.09	1751432.73	14620269.14	40°15'22.2381"N	80°36'7.5448"W	13270.39	332.634	0.49	-0.07	-0.49
19483.00	90.310	335.810	5731.67	13314.12	11869.10	-6137.95	1751394.88	14620352.96	40°15'23.0683"N	80°36'8.0284"W	13362.26	332.655	0.25	0.00	0.25
19574.00	90.340	336.150	5731.16	13405.08	11952.22	-6174.99	1751357.85	14620436.04	40°15'23.8913"N	80°36'8.5013"W	13453.11	332.677	0.38	0.03	0.37
19664.00	90.310	335.390	5730.65	13495.04	12034.29	-6211.93	1751320.93	14620518.08	40°15'24.7040"N	80°36'8.9730"W	13542.97	332.698	0.85	-0.03	-0.84
19756.00	90.150	335.380	5730.28	13586.97	12117.93	-6250.25	1751282.63	14620601.69	40°15'25.5322"N	80°36'9.4624"W	13634.87	332.716	0.17	-0.17	-0.01
19847.00	90.150	335.850	5730.04	13677.92	12200.81	-6287.82	1751245.07	14620684.54	40°15'26.3529"N	80°36'9.9422"W	13725.76	332.735	0.52	0.00	0.52
19938.00	90.180	335.270	5729.78	13768.87	12283.65	-6325.47	1751207.43	14620767.35	40°15'27.1732"N	80°36'10.4230"W	13816.65	332.754	0.64	0.03	-0.64
20030.00	89.850	335.840	5729.75	13860.81	12367.41	-6363.54	1751169.38	14620851.07	40°15'28.0025"N	80°36'10.9092"W	13908.54	332.772	0.72	-0.36	0.62
20121.00	89.570	335.620	5730.21	13951.77	12450.36	-6400.94	1751131.99	14620933.99	40°15'28.8239"N	80°36'11.3868"W	13999.41	332.792	0.39	-0.31	-0.24
20211.00	89.570	335.830	5730.89	14041.72	12532.40	-6437.94	1751095.00	14621016.00	40°15'29.6362"N	80°36'11.8593"W	14089.30	332.810	0.23	0.00	0.23
20302.00	89.690	335.600	5731.48	14132.67	12615.35	-6475.37	1751057.59	14621098.91	40°15'30.4576"N	80°36'12.3373"W	14180.18	332.829	0.29	0.13	-0.25
20393.00	89.420	335.450	5732.18	14223.62	12698.17	-6513.07	1751019.91	14621181.70	40°15'31.2776"N	80°36'12.8188"W	14271.07	332.846	0.34	-0.30	-0.16
20484.00	89.660	335.340	5732.91	14314.55	12780.90	-6550.96	1750982.03	14621264.41	40°15'32.0969"N	80°36'13.3027"W	14361.98	332.862	0.29	0.26	-0.12
20575.00	89.600	335.880	5733.50	14405.50	12863.78	-6588.53	1750944.47	14621347.25	40°15'32.9175"N	80°36'13.7826"W	14452.88	332.880	0.60	-0.07	0.59
20666.00	91.200	335.320	5732.87	14496.44	12946.65	-6626.12	1750906.90	14621430.09	40°15'33.7380"N	80°36'14.2627"W	14543.77	332.897	1.86	1.76	-0.62
20758.00	90.520	335.600	5731.49	14588.37	13030.33	-6664.33	1750868.70	14621513.73	40°15'34.5666"N	80°36'14.7506"W	14635.67	332.913	0.80	-0.74	0.30
20849.00	89.880	335.530	5731.17	14679.32	13113.18	-6701.97	1750831.08	14621596.55	40°15'35.3870"N	80°36'15.2314"W	14726.57	332.929	0.71	-0.70	-0.08
20940.00	89.820	335.550	5731.41	14770.26	13196.01	-6739.65	1750793.41	14621679.35	40°15'36.2072"N	80°36'15.7126"W	14817.47	332.945	0.07	-0.07	0.02
21030.00	89.910	335.240	5731.62	14860.20	13277.84	-6777.12	1750755.95	14621761.15	40°15'37.0174"N	80°36'16.1913"W	14907.39	332.960	0.36	0.10	-0.34
21121.00	89.820	336.150	5731.83	14951.15	13360.77	-6814.58	1750718.51	14621844.05	40°15'37.8386"N	80°36'16.6696"W	14998.29	332.976	1.00	-0.10	1.00
21211.00	90.920	335.450	5731.25	15041.11	13442.86	-6851.47	1750681.64	14621926.10	40°15'38.6514"N	80°36'17.1407"W	15088.17	332.993	1.45	1.22	-0.78
21302.00	90.890	335.770	5729.81	15132.05	13525.72	-6889.04	1750644.08	14622008.94	40°15'39.4720"N	80°36'17.6206"W	15179.07	333.009	0.35	-0.03	0.35



**Actual Wellpath Report**  
John Good Jr BRK 201H AWP Proj: 25398'  
Page 10 of 13



REFERENCE WELLPATH IDENTIFICATION			
Operator	SWN PRODUCTION COMPANY, LLC	Well	John Good Jr BRK 201H
Field	Brooke	API/Legal	
Facility	John Good Jr BRK Pad	Wellbore	John Good Jr BRK 201H AWB
Slot	Slot #201H		

**WELLPATH DATA (286 stations)**

MD [ft]	Inclination [°]	Azimuth [°]	TVD [ft]	Vert Sect [ft]	North [ft]	East [ft]	Grid East [US ft]	Grid North [US ft]	Latitude	Longitude	Closure Dist [ft]	Closure Dir [°]	DLS [°/100ft]	Build Rate [°/100ft]	Turn Rate [°/100ft]
21393.00	90.090	335.450	5729.04	15222.99	13608.60	-6926.62	1750606.52	14622091.78	40°15'40.2926"N	80°36'18.1006"W	15269.97	333.024	0.95	-0.88	-0.35
21484.00	90.090	335.330	5728.89	15313.93	13691.33	-6964.52	1750568.64	14622174.48	40°15'41.1118"N	80°36'18.5846"W	15360.89	333.038	0.13	0.00	-0.13
21574.00	90.280	335.860	5728.60	15403.88	13773.29	-7001.70	1750531.46	14622256.41	40°15'41.9233"N	80°36'19.0596"W	15450.80	333.053	0.63	0.21	0.59
21665.00	90.250	335.280	5728.18	15494.82	13856.14	-7039.34	1750493.84	14622339.23	40°15'42.7437"N	80°36'19.5403"W	15541.72	333.068	0.64	-0.03	-0.64
21756.00	90.180	335.630	5727.84	15585.76	13938.92	-7077.14	1750456.06	14622421.97	40°15'43.5633"N	80°36'20.0231"W	15632.64	333.082	0.39	-0.08	0.38
21846.00	89.690	335.760	5727.94	15675.72	14020.94	-7114.18	1750419.03	14622503.96	40°15'44.3755"N	80°36'20.4962"W	15722.54	333.097	0.56	-0.54	0.14
21936.00	89.750	335.670	5728.38	15765.67	14102.98	-7151.20	1750382.03	14622585.97	40°15'45.1878"N	80°36'20.9690"W	15812.45	333.112	0.12	0.07	-0.10
22027.00	89.690	335.660	5728.83	15856.62	14185.89	-7188.69	1750344.54	14622668.85	40°15'46.0087"N	80°36'21.4479"W	15903.36	333.126	0.07	-0.07	-0.01
22118.00	89.940	335.750	5729.12	15947.58	14268.83	-7226.13	1750307.12	14622751.76	40°15'46.8300"N	80°36'21.9261"W	15994.27	333.141	0.29	0.27	0.10
22209.00	89.570	335.390	5729.51	16038.52	14351.68	-7263.77	1750269.50	14622834.58	40°15'47.6504"N	80°36'22.4068"W	16085.18	333.155	0.57	-0.41	-0.40
22300.00	90.090	338.080	5729.78	16129.51	14435.27	-7299.71	1750233.57	14622918.14	40°15'48.4780"N	80°36'22.8656"W	16176.00	333.175	3.01	0.57	2.96
22391.00	90.060	337.450	5729.66	16220.50	14519.51	-7334.14	1750199.15	14623002.34	40°15'49.3119"N	80°36'23.3050"W	16266.71	333.201	0.69	-0.03	-0.69
22483.00	90.580	337.230	5729.15	16312.50	14604.40	-7369.59	1750163.72	14623087.20	40°15'50.1524"N	80°36'23.7573"W	16358.47	333.224	0.61	0.57	-0.24
22575.00	90.430	337.860	5728.34	16404.50	14689.42	-7404.73	1750128.59	14623172.19	40°15'50.9941"N	80°36'24.2057"W	16450.20	333.248	0.70	-0.16	0.68
22665.00	90.490	337.570	5727.61	16494.49	14772.70	-7438.85	1750094.48	14623255.43	40°15'51.8185"N	80°36'24.6412"W	16539.93	333.272	0.33	0.07	-0.32
22756.00	90.520	337.810	5726.81	16585.49	14856.88	-7473.40	1750059.95	14623339.58	40°15'52.6519"N	80°36'25.0820"W	16630.65	333.296	0.27	0.03	0.26
22847.00	90.490	337.760	5726.01	16676.49	14941.13	-7507.80	1750025.56	14623423.79	40°15'53.4858"N	80°36'25.5210"W	16721.37	333.321	0.06	-0.03	-0.05
22938.00	90.430	337.380	5725.28	16767.48	15025.24	-7542.52	1749990.85	14623507.87	40°15'54.3185"N	80°36'25.9640"W	16812.12	333.344	0.42	-0.07	-0.42
23030.00	90.340	337.220	5724.66	16859.48	15110.11	-7578.03	1749955.36	14623592.71	40°15'55.1588"N	80°36'26.4171"W	16903.90	333.365	0.20	-0.10	-0.17
23121.00	90.580	338.240	5723.93	16950.47	15194.32	-7612.51	1749920.89	14623676.89	40°15'55.9924"N	80°36'26.8572"W	16994.63	333.389	1.15	0.26	1.12
23212.00	90.490	337.430	5723.08	17041.47	15278.59	-7646.84	1749886.57	14623761.13	40°15'56.8267"N	80°36'27.2952"W	17085.36	333.412	0.90	-0.10	-0.89
23303.00	90.710	337.640	5722.13	17132.46	15362.68	-7681.61	1749851.82	14623845.18	40°15'57.6591"N	80°36'27.7389"W	17176.12	333.434	0.33	0.24	0.23
23395.00	90.520	337.680	5721.14	17224.46	15447.77	-7716.58	1749816.86	14623930.24	40°15'58.5015"N	80°36'28.1852"W	17267.86	333.457	0.21	-0.21	0.04
23486.00	90.430	337.980	5720.39	17315.45	15532.04	-7750.92	1749782.54	14624014.48	40°15'59.3357"N	80°36'28.6233"W	17358.60	333.480	0.34	-0.10	0.33
23576.00	90.490	337.110	5719.66	17405.45	15615.21	-7785.29	1749748.18	14624097.62	40°16'0.1591"N	80°36'29.0620"W	17448.37	333.500	0.97	0.07	-0.97
23667.00	90.490	337.200	5718.88	17496.44	15699.07	-7820.62	1749712.86	14624181.44	40°16'0.9894"N	80°36'29.5129"W	17539.18	333.519	0.10	0.00	0.10
23758.00	90.490	337.980	5718.11	17587.44	15783.19	-7855.31	1749678.18	14624265.54	40°16'1.8222"N	80°36'29.9556"W	17629.95	333.540	0.86	0.00	0.86
23848.00	90.460	337.720	5717.36	17677.44	15866.55	-7889.24	1749644.26	14624348.86	40°16'2.6473"N	80°36'30.3886"W	17719.69	333.562	0.29	-0.03	-0.29
23939.00	90.430	337.390	5716.65	17768.43	15950.65	-7923.99	1749609.54	14624432.93	40°16'3.4800"N	80°36'30.8320"W	17810.47	333.583	0.36	-0.03	-0.36
24030.00	90.430	337.340	5715.97	17859.43	16034.64	-7959.01	1749574.53	14624516.89	40°16'4.3114"N	80°36'31.2790"W	17901.27	333.602	0.05	0.00	-0.05

### REFERENCE WELLPATH IDENTIFICATION

Operator	SWN PRODUCTION COMPANY, LLC	Well	John Good Jr BRK 201H
Field	Brooke	API/Legal	
Facility	John Good Jr BRK Pad	Wellbore	John Good Jr BRK 201H AWB
Slot	Slot #201H		

### WELLPATH DATA (286 stations) † = interpolated, ‡ = extrapolated station

MD [ft]	Inclination [°]	Azimuth [°]	TVD [ft]	Vert Sect [ft]	North [ft]	East [ft]	Grid East [US ft]	Grid North [US ft]	Latitude	Longitude	Closure Dist [ft]	Closure Dir [°]	DLS [°/100ft]	Build Rate [°/100ft]	Turn Rate [°/100ft]
24121.00	89.750	337.940	5715.83	17950.43	16118.80	-7993.62	1749539.92	14624601.01	40°16'5.1446"N	80°36'31.7208"W	17992.04	333.622	1.00	-0.75	0.66
24214.00	89.910	338.110	5716.10	18043.42	16205.04	-8028.43	1749505.14	14624687.22	40°16'5.9983"N	80°36'32.1648"W	18084.77	333.645	0.25	0.17	0.18
24305.00	89.630	337.540	5716.47	18134.42	16289.31	-8062.77	1749470.80	14624771.46	40°16'6.8325"N	80°36'32.6031"W	18175.53	333.666	0.70	-0.31	-0.63
24395.00	90.460	337.450	5716.40	18224.42	16372.45	-8097.22	1749436.37	14624854.57	40°16'7.6557"N	80°36'33.0427"W	18265.33	333.685	0.93	0.92	-0.10
24486.00	90.580	337.690	5715.57	18315.42	16456.57	-8131.94	1749401.66	14624938.65	40°16'8.4883"N	80°36'33.4859"W	18356.12	333.704	0.29	0.13	0.26
24577.00	90.430	337.770	5714.77	18406.41	16540.77	-8166.43	1749367.19	14625022.82	40°16'9.3220"N	80°36'33.9259"W	18446.89	333.724	0.19	-0.16	0.09
24668.00	90.430	337.640	5714.09	18497.41	16624.97	-8200.95	1749332.68	14625106.99	40°16'10.1555"N	80°36'34.3665"W	18537.67	333.743	0.14	0.00	-0.14
24759.00	90.430	337.380	5713.40	18588.41	16709.05	-8235.76	1749297.89	14625191.03	40°16'10.9878"N	80°36'34.8108"W	18628.47	333.762	0.29	0.00	-0.29
24850.00	90.400	337.800	5712.75	18679.40	16793.17	-8270.45	1749263.21	14625275.12	40°16'11.8206"N	80°36'35.2535"W	18719.26	333.780	0.46	-0.03	0.46
24941.00	90.490	337.730	5712.04	18770.40	16877.40	-8304.88	1749228.79	14625359.32	40°16'12.6545"N	80°36'35.6930"W	18810.04	333.800	0.13	0.10	-0.08
25034.00	90.550	337.040	5711.19	18863.40	16963.25	-8340.64	1749193.04	14625445.13	40°16'13.5043"N	80°36'36.1494"W	18902.86	333.817	0.74	0.06	-0.74
25125.00	90.460	337.250	5710.39	18954.39	17047.10	-8375.98	1749157.71	14625528.95	40°16'14.3345"N	80°36'36.6006"W	18993.70	333.833	0.25	-0.10	0.23
25216.00	90.650	337.880	5709.51	19045.39	17131.21	-8410.71	1749123.00	14625613.03	40°16'15.1671"N	80°36'37.0438"W	19084.50	333.851	0.72	0.21	0.69
25307.00	90.580	338.060	5708.53	19136.38	17215.56	-8444.84	1749088.88	14625697.35	40°16'16.0022"N	80°36'37.4794"W	19175.27	333.870	0.21	-0.08	0.20
25373.00	90.460	337.510	5707.94	19202.37	17276.66	-8469.79	1749063.94	14625758.42	40°16'16.6070"N	80°36'37.7978"W	19241.11	333.884	0.85	-0.18	-0.83
25398.00†	90.460	337.510	5707.73	19227.37	17299.75	-8479.36	1749054.38	14625781.51	40°16'16.8357"N	80°36'37.9199"W	19266.06	333.889	0.00	0.00	0.00

### REFERENCE WELLPATH IDENTIFICATION

Operator	SWN PRODUCTION COMPANY, LLC	Well	John Good Jr BRK 201H
Field	Brooke	API/Legal	
Facility	John Good Jr BRK Pad	Wellbore	John Good Jr BRK 201H AWB
Slot	Slot #201H		

### HOLE & CASING SECTIONS - Ref Wellbore: John Good Jr BRK 201H AWB Ref Wellpath: John Good Jr BRK 201H AWP Proj: 25398'

String/Diameter	Start MD [ft]	End MD [ft]	Interval [ft]	Start TVD [ft]	End TVD [ft]	Start N/S [ft]	Start E/W [ft]	End N/S [ft]	End E/W [ft]
20in Conductor	26.00	126.00	100.00	26.00	126.00	0.00	0.00	0.24	-0.21
17.5in Open Hole	126.00	382.00	256.00	126.00	382.00	0.24	-0.21	0.33	-1.42
13.375in Casing Surface	26.00	382.00	356.00	26.00	382.00	0.00	0.00	0.33	-1.42
12.25in Open Hole	382.00	1660.00	1278.00	382.00	1643.53	0.33	-1.42	-123.46	-117.63
9.625in Casing Intermediate	26.00	1660.00	1634.00	26.00	1643.53	0.00	0.00	-123.46	-117.63
8.75in Open Hole	1660.00	5100.00	3440.00	1643.53	4955.48	-123.46	-117.63	-756.21	-789.38
8.5in Open Hole	5100.00	25398.00	20298.00	4955.48	5707.73	-756.21	-789.38	17299.75	-8479.36
5.5in Casing Production	26.00	25398.00	25372.00	26.00	5707.73	0.00	0.00	17299.75	-8479.36

### TARGETS

Name	TVD [ft]	North [ft]	East [ft]	Grid East [US ft]	Grid North [US ft]	Latitude	Longitude	Shape
John Good BRK 201H BHL Rev-8	5678.47	17300.87	-8479.26	1749054.48	14625782.63	40°16'16.8467"N	80°36'37.9185"W	point
John Good BRK 201H LP Rev-5	5892.00	-188.72	-1241.95	1756288.99	14608299.79	40°13'23.6934"N	80°35'5.6082"W	point

REFERENCE WELLPATH IDENTIFICATION			
Operator	SWN PRODUCTION COMPANY, LLC	Well	John Good Jr BRK 201H
Field	Brooke	API/Legal	
Facility	John Good Jr BRK Pad	Wellbore	John Good Jr BRK 201H AWB
Slot	Slot #201H		

WELLPATH COMPOSITION - Ref Wellbore: John Good Jr BRK 201H AWB Ref Wellpath: John Good Jr BRK 201H AWP Proj: 25398'					
Start MD [ft]	End MD [ft]	Positional Uncertainty Model	Log Name/Comment	Wellbore	Survey Date
26.00	296.00	Gyrodata 2015 - GC+WIR+DPIPE	01 Gyrodata <17-1/2"> (50'-296')	John Good Jr BRK 201H AWB	5/6/2021
296.00	565.00	Gyrodata 2015 - GC+WIR+DPIPE	02 Gyrodata <12-1/4"> (386'-565')	John Good Jr BRK 201H AWB	5/6/2021
565.00	1575.00	OWSG MWD rev2 + HRGM	03 Premier MWD <12-1/4"> (672'-1575')	John Good Jr BRK 201H AWB	5/6/2021
1575.00	5036.00	OWSG MWD rev2 + HRGM	04 Premier MWD <8-3/4"> (1700'-5036')	John Good Jr BRK 201H AWB	5/6/2021
5036.00	25398.00	BH AutoTrak Curve/eXpress (2019) (HRGM, Short spacing)	05 BH AT Curve <8-1/2"> (5168'-25373')	John Good Jr BRK 201H AWB	5/6/2021