

# SWN PRODUCTION COMPANY, LLC

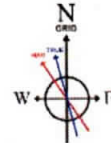
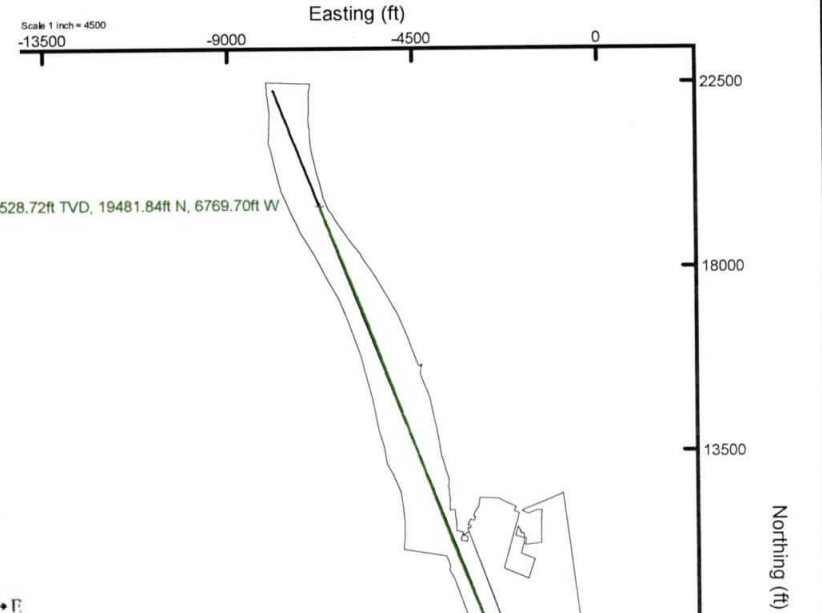
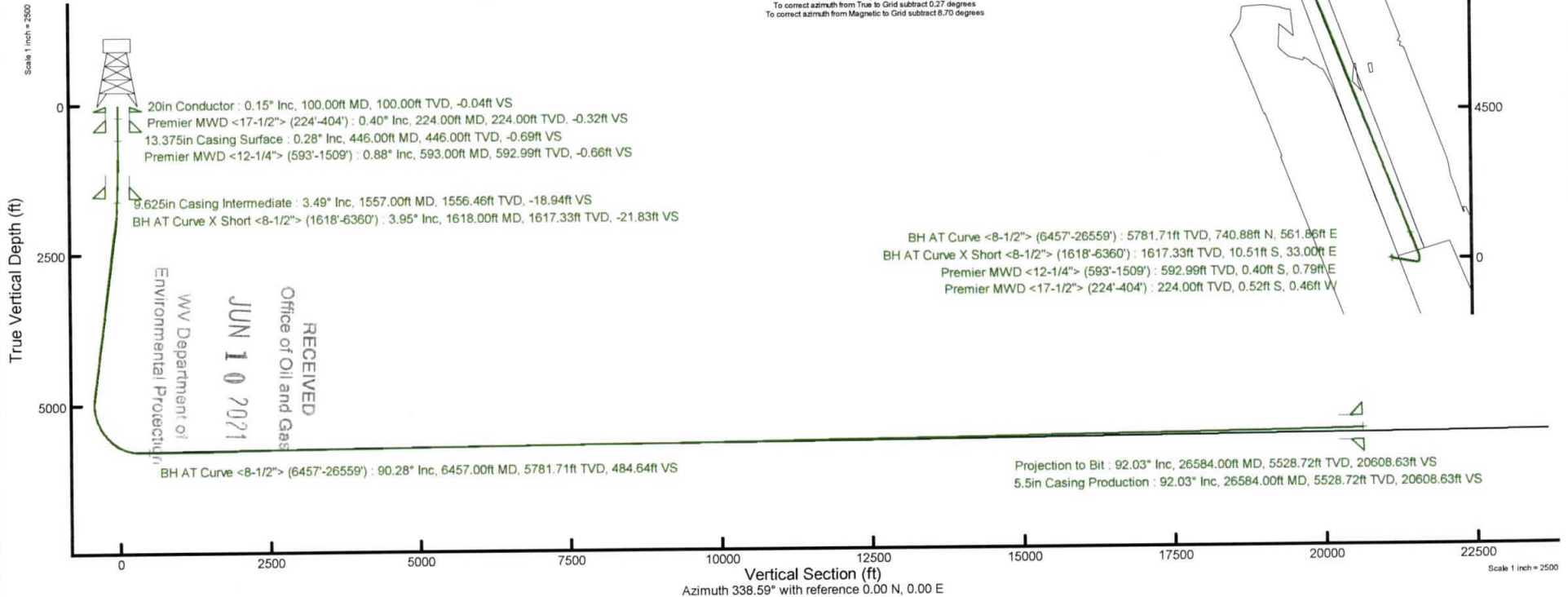
Location: Brooke County, WV Slot: Slot #05  
 Field: Brooke Well: OV Royalty Trust LLC BRK 5H  
 Facility: OV Royalty Trust LLC Pad Wellbore: OV Royalty Trust LLC BRK 5H PWB

Plot reference wellpath is OV Royalty Trust LLC BRK 5H PWB Rev-B.0	Grid System: NAD83 / UTM Zone 17 North, US feet
True vertical depths are referenced to SDC 41 (RKB)	North Reference: Grid north
Reference wellpath measured depths are referenced to SDC 41 (RKB)	Scale: True distance
SDC 41 (RKB) to Mean Sea Level: 1206.7 feet	Coordinates are in feet referenced to Slot
Mean Sea Level to Ground level (At Slot: Slot #05): -1180.7 feet	Depths are in feet
Offset wellpath MDs are referenced to each path's default MD datum	Created by: aterjen on 2021-02-06; Database: WA_MPL_EASTERNUS_Defn

## Location Information

Facility Name		Grid East (US ft)	Grid North (US ft)	Latitude	Longitude	
OV Royalty Trust LLC Pad		1756330.520	14631069.400	40°17'8.7828"N	80°35'3.6961"W	
Slot	Local N (ft)	Local E (ft)	Grid East (US ft)	Grid North (US ft)	Latitude	Longitude
Slot #05	-24.97	33.26	1756363.770	14631044.440	40°17'8.5345"N	80°35'3.2684"W
SDC 41 (RKB) to Ground level (At Slot: Slot #05)					26ft	
Mean Sea Level to Ground level (At Slot: Slot #05)					-1180.7ft	
SDC 41 (RKB) to Mean Sea Level					1206.7ft	

API: 47-009-00318-0000  
 BH Job #: 110732177  
 Rig: SDC 41  
 Duration: 01/28/2021 - 01/31/2021



User specified Dip: 67.43° Field: 52301 nT  
 Magnetic North is 8.43 degrees West of True North (at 1/20/2021)  
 Grid North is 0.27 degrees East of True North  
 To correct azimuth from True to Grid subtract 0.27 degrees  
 To correct azimuth from Magnetic to Grid subtract 8.70 degrees

RECEIVED  
 Office of Oil and Gas  
 JUN 10 2021  
 WV Department of Environmental Protection

### REFERENCE WELLPATH IDENTIFICATION

Operator	SWN PRODUCTION COMPANY, LLC	Well	OV Royalty Trust LLC BRK 5H
Field	Brooke	API	47-009-00318-00-00
Facility	OV Royalty Trust LLC Pad	Wellbore	OV Royalty Trust LLC BRK 5H AWB
Slot	Slot #05		

### REPORT SETUP INFORMATION

Projection System	NAD83 / UTM Zone 17 North, US feet	Software System	WellArchitect® 6.0
North Reference	Grid	User	Atenjen
Scale	0.999615	Report Generated	2/5/2021 at 8:31:45 AM
Convergence at slot	0.27° East	Database	WA_MPL_EASTERNUS_Defn

### WELLPATH LOCATION

	Local coordinates		Grid coordinates		Geographic coordinates	
	North[ft]	East[ft]	Easting[US ft]	Northing[US ft]	Latitude	Longitude
Slot Location	-24.97	33.26	1756363.77	14631044.44	40°17'8.5345"N	80°35'3.2684"W
Facility Reference Pt			1756330.52	14631069.40	40°17'8.7828"N	80°35'3.6961"W
Field Reference Pt			0.00	0.00	0°00'0.0000"	85°29'19.4780"W

### WELLPATH DATUM

Calculation method	Minimum curvature	SDC 41 (RKB) to Facility Vertical Datum	1206.70ft
Horizontal Reference Pt	Slot	SDC 41 (RKB) to Mean Sea Level	1206.70ft
Vertical Reference Pt	SDC 41 (RKB)	SDC 41 (RKB) to Ground Level at Slot (Slot #05)	26.00ft
MD Reference Pt	SDC 41 (RKB)	Section Origin	N 0.00, E 0.00 ft
Field Vertical Reference	Mean Sea Level	Section Azimuth	338.59°

RECEIVED  
 Office of Oil and Gas  
 JUN 10 2021  
 WV Department of  
 Environmental Protection





# Actual Wellpath Report

OV Royalty Trust LLC BRK 5H AWP Proj: 26584'  
Page 2 of 13



## REFERENCE WELLPATH IDENTIFICATION

Operator	SWN PRODUCTION COMPANY, LLC	Well	OV Royalty Trust LLC BRK 5H
Field	Brooke	API	47-009-00318-00-00
Facility	OV Royalty Trust LLC Pad	Wellbore	OV Royalty Trust LLC BRK 5H AWB
Slot	Slot #05		

## WELLPATH DATA (279 stations) † = interpolated, ‡ = extrapolated station

MD [ft]	Inclination [°]	Azimuth [°]	TVD [ft]	Vert Sect [ft]	North [ft]	East [ft]	Grid East [US ft]	Grid North [US ft]	Latitude	Longitude	Closure Dist [ft]	Closure Dir [°]	DLS [°/100ft]	Build Rate [°/100ft]	Turn Rate [°/100ft]
0.00†	0.000	221.470	0.00	0.00	0.00	0.00	1756363.77	14631044.44	40°17'8.5345"N	80°35'3.2684"W	0.00	0.000	0.00	0.00	0.00
26.00	0.000	221.470	26.00	0.00	0.00	0.00	1756363.77	14631044.44	40°17'8.5345"N	80°35'3.2684"W	0.00	0.000	0.00	0.00	0.00
224.00	0.400	221.470	224.00	-0.32	-0.52	-0.46	1756363.31	14631043.92	40°17'8.5294"N	80°35'3.2743"W	0.69	221.470	0.20	0.20	0.00
314.00	0.130	226.890	314.00	-0.50	-0.82	-0.74	1756363.03	14631043.62	40°17'8.5264"N	80°35'3.2780"W	1.11	221.969	0.30	-0.30	6.02
404.00	0.150	119.220	404.00	-0.62	-0.95	-0.71	1756363.06	14631043.49	40°17'8.5251"N	80°35'3.2776"W	1.19	216.841	0.25	0.02	-119.63
593.00	0.880	62.420	592.99	-0.66	-0.40	0.79	1756364.56	14631044.04	40°17'8.5305"N	80°35'3.2582"W	0.89	116.794	0.43	0.39	-30.05
685.00	1.090	95.200	684.98	-0.98	-0.15	2.29	1756366.06	14631044.29	40°17'8.5329"N	80°35'3.2388"W	2.29	93.785	0.64	0.23	35.63
777.00	1.430	106.680	776.95	-2.08	-0.56	4.26	1756368.03	14631043.88	40°17'8.5287"N	80°35'3.2134"W	4.30	97.493	0.46	0.37	12.48
870.00	1.360	109.110	869.93	-3.51	-1.25	6.41	1756370.18	14631043.19	40°17'8.5218"N	80°35'3.1857"W	6.54	101.068	0.10	-0.08	2.61
962.00	1.420	105.710	961.90	-4.91	-1.92	8.54	1756372.31	14631042.52	40°17'8.5151"N	80°35'3.1582"W	8.76	102.671	0.11	0.07	-3.70
1055.00	1.540	106.790	1054.87	-6.37	-2.59	10.85	1756374.61	14631041.85	40°17'8.5083"N	80°35'3.1285"W	11.15	103.446	0.13	0.13	1.16
1146.00	1.780	109.720	1145.83	-8.06	-3.42	13.35	1756377.11	14631041.02	40°17'8.5000"N	80°35'3.0963"W	13.78	104.385	0.28	0.26	3.22
1236.00	1.980	109.860	1235.78	-10.01	-4.42	16.13	1756379.89	14631040.02	40°17'8.4900"N	80°35'3.0605"W	16.72	105.338	0.22	0.22	0.16
1329.00	1.880	109.870	1328.73	-12.07	-5.49	19.07	1756382.84	14631038.95	40°17'8.4794"N	80°35'3.0226"W	19.85	106.052	0.11	-0.11	0.01
1421.00	2.640	108.310	1420.66	-14.42	-6.67	22.50	1756386.27	14631037.78	40°17'8.4676"N	80°35'2.9784"W	23.47	106.501	0.83	0.83	-1.70
1509.00	3.180	104.790	1508.54	-17.16	-7.93	26.79	1756390.55	14631036.52	40°17'8.4549"N	80°35'2.9232"W	27.94	106.483	0.65	0.61	-4.00
1618.00	3.950	118.890	1617.33	-21.83	-10.51	33.00	1756396.76	14631033.93	40°17'8.4291"N	80°35'2.8432"W	34.63	107.670	1.07	0.71	12.94
1713.00	5.890	104.590	1711.98	-27.22	-13.32	40.58	1756404.34	14631031.12	40°17'8.4010"N	80°35'2.7455"W	42.71	108.173	2.40	2.04	-15.05
1807.00	6.960	108.450	1805.39	-33.70	-16.34	50.65	1756414.40	14631028.11	40°17'8.3707"N	80°35'2.6158"W	53.22	107.878	1.23	1.14	4.11
1902.00	9.300	107.490	1899.43	-42.21	-20.47	63.44	1756427.18	14631023.98	40°17'8.3293"N	80°35'2.4511"W	66.66	107.883	2.47	2.46	-1.01
1998.00	11.280	107.140	1993.88	-52.93	-25.57	79.81	1756443.55	14631018.88	40°17'8.2781"N	80°35'2.2401"W	83.80	107.763	2.06	2.06	-0.36
2093.00	13.720	107.150	2086.62	-65.75	-31.63	99.45	1756463.19	14631012.82	40°17'8.2173"N	80°35'1.9870"W	104.36	107.641	2.57	2.57	0.01
2187.00	13.740	99.350	2177.94	-78.41	-36.73	121.12	1756484.85	14631007.73	40°17'8.1659"N	80°35'1.7077"W	126.57	106.869	1.97	0.02	-8.30
2281.00	13.880	99.200	2269.23	-89.86	-40.34	143.27	1756506.98	14631004.11	40°17'8.1292"N	80°35'1.4222"W	148.84	105.728	0.15	0.15	-0.16
2378.00	13.900	99.320	2363.39	-101.74	-44.09	166.25	1756529.95	14631000.37	40°17'8.0911"N	80°35'1.1258"W	172.00	104.854	0.04	0.02	0.12
2473.00	13.450	99.570	2455.70	-113.25	-47.78	188.40	1756552.10	14630996.68	40°17'8.0536"N	80°35'0.8402"W	194.37	104.230	0.48	-0.47	0.26
2568.00	13.740	99.620	2548.03	-124.76	-51.50	210.42	1756574.11	14630992.96	40°17'8.0158"N	80°35'0.5563"W	216.63	103.752	0.31	0.31	0.05
2662.00	13.780	99.510	2639.34	-136.26	-55.21	232.47	1756596.15	14630989.25	40°17'7.9781"N	80°35'0.2721"W	238.94	103.361	0.05	0.04	-0.12
2758.00	13.860	99.160	2732.56	-147.99	-58.93	255.10	1756618.77	14630985.53	40°17'7.9403"N	80°34'59.9803"W	261.82	103.008	0.12	0.08	-0.36
2853.00	13.860	99.400	2824.79	-159.60	-62.60	277.56	1756641.22	14630981.86	40°17'7.9030"N	80°34'59.6907"W	284.53	102.710	0.06	0.00	0.25

RECEIVED  
 Department of  
 Environmental Protection  
 10 2021  
 of Oil and Gas





# Actual Wellpath Report

OV Royalty Trust LLC BRK 5H AWP Proj: 26584'  
Page 3 of 13



## REFERENCE WELLPATH IDENTIFICATION

Operator	SWN PRODUCTION COMPANY, LLC	Well	OV Royalty Trust LLC BRK 5H
Field	Brooke	API	47-009-00318-00-00
Facility	OV Royalty Trust LLC Pad	Wellbore	OV Royalty Trust LLC BRK 5H AWB
Slot	Slot #05		

## WELLPATH DATA (279 stations)

MD [ft]	Inclination [°]	Azimuth [°]	TVD [ft]	Vert Sect [ft]	North [ft]	East [ft]	Grid East [US ft]	Grid North [US ft]	Latitude	Longitude	Closure Dist [ft]	Closure Dir [°]	DLS [°/100ft]	Build Rate [°/100ft]	Turn Rate [°/100ft]
2948.00	13.700	99.820	2917.06	-171.26	-66.38	299.87	1756663.52	14630978.09	40°17'7.8646"N	80°34'59.4031"W	307.13	102.482	0.20	-0.17	0.44
3042.00	13.620	99.510	3008.40	-182.72	-70.11	321.75	1756685.40	14630974.36	40°17'7.8268"N	80°34'59.1209"W	329.30	102.292	0.12	-0.09	-0.33
3138.00	13.690	99.360	3101.69	-194.34	-73.82	344.11	1756707.75	14630970.65	40°17'7.7890"N	80°34'58.8327"W	351.94	102.108	0.08	0.07	-0.16
3233.00	12.570	99.190	3194.20	-205.36	-77.30	365.41	1756729.03	14630967.17	40°17'7.7536"N	80°34'58.5581"W	373.49	101.945	1.18	-1.18	-0.18
3329.00	13.550	99.400	3287.72	-216.43	-80.81	386.81	1756750.43	14630963.66	40°17'7.7180"N	80°34'58.2820"W	395.16	101.800	1.02	1.02	0.22
3423.00	13.190	99.490	3379.17	-227.58	-84.37	408.26	1756771.87	14630960.10	40°17'7.6818"N	80°34'58.0056"W	416.88	101.677	0.38	-0.38	0.10
3518.00	11.900	99.440	3471.90	-238.17	-87.77	428.61	1756792.21	14630956.71	40°17'7.6473"N	80°34'57.7432"W	437.50	101.573	1.36	-1.36	-0.05
3614.00	14.530	99.370	3565.35	-249.41	-91.35	450.26	1756813.85	14630953.12	40°17'7.6108"N	80°34'57.4640"W	459.43	101.469	2.74	2.74	-0.07
3708.00	13.970	99.490	3656.45	-261.27	-95.14	473.08	1756836.67	14630949.33	40°17'7.5723"N	80°34'57.1697"W	482.56	101.371	0.60	-0.60	0.13
3802.00	14.760	98.770	3747.52	-273.12	-98.84	496.11	1756859.69	14630945.64	40°17'7.5347"N	80°34'56.8729"W	505.86	101.267	0.86	0.84	-0.77
3898.00	14.660	99.560	3840.37	-285.52	-102.72	520.17	1756883.74	14630941.76	40°17'7.4952"N	80°34'56.5626"W	530.22	101.171	0.23	-0.10	0.82
3992.00	14.770	99.590	3931.29	-297.81	-106.69	543.72	1756907.28	14630937.79	40°17'7.4549"N	80°34'56.2590"W	554.09	101.102	0.12	0.12	0.03
4086.00	13.910	99.310	4022.36	-309.75	-110.52	566.68	1756930.24	14630933.97	40°17'7.4160"N	80°34'55.9629"W	577.36	101.036	0.92	-0.91	-0.30
4181.00	13.260	99.760	4114.70	-321.23	-114.21	588.69	1756952.23	14630930.27	40°17'7.3785"N	80°34'55.6792"W	599.67	100.980	0.69	-0.68	0.47
4277.00	13.360	99.590	4208.12	-332.64	-117.93	610.48	1756974.01	14630926.56	40°17'7.3408"N	80°34'55.3983"W	621.76	100.933	0.11	0.10	-0.18
4371.00	13.510	99.720	4299.55	-343.91	-121.59	632.01	1756995.53	14630922.90	40°17'7.3036"N	80°34'55.1207"W	643.60	100.890	0.16	0.16	0.14
4465.00	14.020	99.620	4390.85	-355.45	-125.35	654.06	1757017.57	14630919.14	40°17'7.2654"N	80°34'54.8364"W	665.96	100.849	0.54	0.54	-0.11
4560.00	14.600	99.210	4482.90	-367.48	-129.18	677.22	1757040.73	14630915.31	40°17'7.2264"N	80°34'54.5377"W	689.43	100.800	0.62	0.61	-0.43
4655.00	14.900	99.520	4574.77	-379.86	-133.12	701.09	1757064.58	14630911.37	40°17'7.1864"N	80°34'54.2301"W	713.61	100.751	0.33	0.32	0.33
4749.00	14.900	99.700	4665.61	-392.31	-137.16	724.92	1757088.41	14630907.34	40°17'7.1454"N	80°34'53.9228"W	737.78	100.714	0.05	0.00	0.19
4845.00	14.780	99.100	4758.41	-404.91	-141.17	749.17	1757112.65	14630903.32	40°17'7.1046"N	80°34'53.6100"W	762.36	100.672	0.20	-0.12	-0.62
4939.00	14.780	97.200	4849.30	-416.74	-144.57	772.91	1757136.38	14630899.92	40°17'7.0699"N	80°34'53.3040"W	786.31	100.595	0.52	0.00	-2.02
5034.00	13.430	78.910	4941.48	-424.52	-143.97	795.77	1757159.23	14630900.53	40°17'7.0748"N	80°34'53.0090"W	808.69	100.255	4.88	-1.42	-19.25
5128.00	13.850	54.230	5032.90	-423.68	-135.28	815.63	1757179.08	14630909.21	40°17'7.1597"N	80°34'52.7522"W	826.77	99.418	6.16	0.45	-26.26
5223.00	16.290	26.890	5124.74	-411.99	-116.73	830.90	1757194.35	14630927.76	40°17'7.3423"N	80°34'52.5540"W	839.06	97.997	7.83	2.57	-28.78
5319.00	20.660	15.760	5215.80	-389.52	-88.40	841.60	1757205.04	14630956.07	40°17'7.6218"N	80°34'52.4142"W	846.23	95.996	5.83	4.55	-11.59
5413.00	25.840	7.680	5302.16	-358.37	-52.10	848.85	1757212.29	14630992.36	40°17'7.9801"N	80°34'52.3185"W	850.44	93.513	6.46	5.51	-8.60
5507.00	31.060	352.660	5384.89	-316.87	-7.66	848.49	1757211.93	14631036.78	40°17'8.4193"N	80°34'52.3204"W	848.52	90.518	9.38	5.55	-15.98
5602.00	36.880	343.780	5463.69	-264.63	44.09	837.38	1757200.82	14631088.51	40°17'8.9312"N	80°34'52.4606"W	838.54	86.986	8.04	6.13	-9.35
5697.00	43.620	339.720	5536.17	-203.39	102.28	818.03	1757181.48	14631146.68	40°17'9.5071"N	80°34'52.7067"W	824.40	82.873	7.61	7.09	-4.27

RECEIVED  
 Department of  
 Oil and Gas  
 January 10 2021  
 Environmental Protection





# Actual Wellpath Report

OV Royalty Trust LLC BRK 5H AWP Proj: 26584'  
Page 4 of 13



### REFERENCE WELLPATH IDENTIFICATION

Operator	SWN PRODUCTION COMPANY, LLC	Well	OV Royalty Trust LLC BRK 5H
Field	Brooke	API	47-009-00318-00-00
Facility	OV Royalty Trust LLC Pad	Wellbore	OV Royalty Trust LLC BRK 5H AWB
Slot	Slot #05		

### WELLPATH DATA (279 stations)

MD [ft]	Inclination [°]	Azimuth [°]	TVD [ft]	Vert Sect [ft]	North [ft]	East [ft]	Grid East [US ft]	Grid North [US ft]	Latitude	Longitude	Closure Dist [ft]	Closure Dir [°]	DLS [°/100ft]	Build Rate [°/100ft]	Turn Rate [°/100ft]
5793.00	48.080	336.940	5603.02	-134.54	166.24	792.55	1757156.01	14631210.61	40°17'10.1403"N	80°34'53.0317"W	809.79	78.154	5.09	4.65	-2.90
5888.00	55.460	337.330	5661.77	-59.99	234.96	763.58	1757127.06	14631279.31	40°17'10.8207"N	80°34'53.4012"W	798.91	72.897	7.78	7.77	0.41
5982.00	63.660	336.940	5709.35	20.95	309.56	732.11	1757095.60	14631353.88	40°17'11.5595"N	80°34'53.8028"W	794.87	67.079	8.73	8.72	-0.41
6076.00	70.800	337.830	5745.71	107.55	389.53	698.82	1757062.32	14631433.82	40°17'12.3512"N	80°34'54.2275"W	800.05	60.864	7.65	7.60	0.95
6171.00	79.730	338.200	5769.85	199.33	474.64	664.46	1757027.98	14631518.89	40°17'13.1938"N	80°34'54.6656"W	816.57	54.461	9.41	9.40	0.39
6266.00	87.750	338.850	5780.20	293.69	562.45	629.92	1756993.45	14631606.67	40°17'14.0631"N	80°34'55.1059"W	844.48	48.239	8.47	8.44	0.68
6360.00	90.060	339.110	5782.00	387.66	650.17	596.21	1756959.75	14631694.36	40°17'14.9315"N	80°34'55.5356"W	882.15	42.521	2.47	2.46	0.28
6457.00	90.280	339.400	5781.71	484.65	740.88	561.86	1756925.41	14631785.03	40°17'15.8295"N	80°34'55.9734"W	929.83	37.175	0.38	0.23	0.30
6551.00	90.520	339.990	5781.05	578.63	829.03	529.24	1756892.80	14631873.15	40°17'16.7022"N	80°34'56.3889"W	983.56	32.553	0.68	0.26	0.63
6646.00	90.030	339.240	5780.60	673.62	918.08	496.15	1756859.73	14631962.17	40°17'17.5837"N	80°34'56.8105"W	1043.57	28.388	0.94	-0.52	-0.79
6740.00	90.220	339.450	5780.39	767.61	1006.04	462.99	1756826.58	14632050.09	40°17'18.4544"N	80°34'57.2330"W	1107.46	24.712	0.30	0.20	0.22
6835.00	90.250	339.680	5780.00	862.59	1095.06	429.82	1756793.43	14632139.08	40°17'19.3356"N	80°34'57.6556"W	1176.40	21.430	0.24	0.03	0.24
6930.00	90.150	339.320	5779.67	957.58	1184.04	396.55	1756760.17	14632228.03	40°17'20.2165"N	80°34'58.0795"W	1248.69	18.516	0.39	-0.11	-0.38
7025.00	90.370	339.290	5779.24	1052.57	1272.91	362.98	1756726.61	14632316.86	40°17'21.0962"N	80°34'58.5074"W	1323.66	15.916	0.23	0.23	-0.03
7119.00	90.370	339.700	5778.63	1146.56	1360.96	330.05	1756693.70	14632404.87	40°17'21.9677"N	80°34'58.9269"W	1400.41	13.632	0.44	0.00	0.44
7214.00	90.180	339.620	5778.18	1241.54	1450.03	297.03	1756660.69	14632493.91	40°17'22.8495"N	80°34'59.3476"W	1480.14	11.577	0.22	-0.20	-0.08
7309.00	90.000	339.320	5778.03	1336.53	1539.00	263.72	1756627.38	14632582.84	40°17'23.7302"N	80°34'59.7721"W	1561.43	9.724	0.37	-0.19	-0.32
7404.00	90.400	339.810	5777.70	1431.51	1628.02	230.55	1756594.23	14632671.83	40°17'24.6114"N	80°35'0.1947"W	1644.26	8.060	0.67	0.42	0.52
7498.00	90.460	339.810	5776.99	1525.49	1716.24	198.11	1756561.80	14632760.02	40°17'25.4847"N	80°35'0.6080"W	1727.64	6.585	0.06	0.06	0.00
7593.00	90.950	340.020	5775.82	1620.46	1805.46	165.49	1756529.19	14632849.20	40°17'26.3678"N	80°35'1.0236"W	1813.02	5.237	0.56	0.52	0.22
7687.00	91.020	339.890	5774.21	1714.42	1893.75	133.27	1756496.99	14632937.46	40°17'27.2418"N	80°35'1.4339"W	1898.43	4.025	0.16	0.07	-0.14
7782.00	92.030	338.600	5771.68	1809.37	1982.55	99.62	1756463.35	14633026.22	40°17'28.1208"N	80°35'1.8628"W	1985.05	2.877	1.72	1.06	-1.36
7878.00	91.020	337.760	5769.12	1905.33	2071.64	63.95	1756427.69	14633115.28	40°17'29.0028"N	80°35'2.3177"W	2072.62	1.768	1.37	-1.05	-0.88
7974.00	91.260	337.680	5767.21	2001.30	2160.45	27.56	1756391.32	14633204.06	40°17'29.8822"N	80°35'2.7819"W	2160.63	0.731	0.26	0.25	-0.08
8070.00	90.920	337.550	5765.39	2097.27	2249.20	-8.99	1756354.78	14633292.77	40°17'30.7609"N	80°35'3.2482"W	2249.22	359.771	0.38	-0.35	-0.14
8165.00	90.830	337.930	5763.94	2192.25	2337.11	-44.98	1756318.81	14633380.65	40°17'31.6312"N	80°35'3.7072"W	2337.54	358.898	0.41	-0.09	0.40
8261.00	90.740	337.580	5762.62	2288.23	2425.96	-81.31	1756282.49	14633469.46	40°17'32.5109"N	80°35'4.1708"W	2427.32	358.080	0.38	-0.09	-0.36
8355.00	90.710	337.460	5761.43	2382.21	2512.81	-117.25	1756246.56	14633556.28	40°17'33.3708"N	80°35'4.6293"W	2515.54	357.328	0.13	-0.03	-0.13
8452.00	90.370	338.250	5760.52	2479.19	2602.65	-153.82	1756210.01	14633646.08	40°17'34.2602"N	80°35'5.0957"W	2607.19	356.618	0.89	-0.35	0.81
8547.00	91.140	339.030	5759.26	2574.18	2691.11	-188.41	1756175.43	14633734.51	40°17'35.1360"N	80°35'5.5369"W	2697.70	355.995	1.15	0.81	0.82

RECEIVED  
 Office of Oil and Gas  
 JUN 10 2021  
 Department of Environmental Protection



REFERENCE WELLPATH IDENTIFICATION			
Operator	SWN PRODUCTION COMPANY, LLC	Well	OV Royalty Trust LLC BRK 5H
Field	Brooke	API	47-009-00318-00-00
Facility	OV Royalty Trust LLC Pad	Wellbore	OV Royalty Trust LLC BRK 5H AWB
Slot	Slot #05		

WELLPATH DATA (279 stations)																
MD [ft]	Inclination [°]	Azimuth [°]	TVD [ft]	Vert Sect [ft]	North [ft]	East [ft]	Grid East [US ft]	Grid North [US ft]	Latitude	Longitude	Closure Dist [ft]	Closure Dir [°]	DLS [°/100ft]	Build Rate [°/100ft]	Turn Rate [°/100ft]	
8642.00	90.490	338.370	5757.91	2669.17	2779.61	-222.92	1756140.94	14633822.98	40°17'36.0122"N	80°35'5.9768"W	2788.54	355.415	0.98	-0.68	-0.69	
8738.00	90.680	338.460	5756.93	2765.17	2868.88	-258.23	1756105.64	14633912.21	40°17'36.8959"N	80°35'6.4271"W	2880.48	354.857	0.22	0.20	0.09	
8832.00	91.140	339.220	5755.44	2859.15	2956.53	-292.16	1756071.72	14633999.82	40°17'37.7636"N	80°35'6.8597"W	2970.93	354.356	0.94	0.49	0.81	
8927.00	90.120	338.660	5754.40	2954.15	3045.18	-326.30	1756037.60	14634088.44	40°17'38.6412"N	80°35'7.2948"W	3062.61	353.884	1.22	-1.07	-0.59	
9021.00	90.250	338.690	5754.09	3048.14	3132.74	-360.48	1756003.43	14634175.97	40°17'39.5080"N	80°35'7.7307"W	3153.41	353.436	0.14	0.14	0.03	
9117.00	89.910	339.090	5753.96	3144.14	3222.30	-395.06	1755968.87	14634265.49	40°17'40.3946"N	80°35'8.1715"W	3246.42	353.010	0.55	-0.35	0.42	
9212.00	90.180	338.790	5753.88	3239.14	3310.95	-429.19	1755934.74	14634354.11	40°17'41.2722"N	80°35'8.6067"W	3338.65	352.614	0.42	0.28	-0.32	
9307.00	90.580	339.040	5753.25	3334.14	3399.59	-463.37	1755900.58	14634442.71	40°17'42.1497"N	80°35'9.0424"W	3431.02	352.238	0.50	0.42	0.26	
9403.00	90.860	338.900	5752.05	3430.13	3489.19	-497.82	1755866.15	14634532.28	40°17'43.0367"N	80°35'9.4815"W	3524.52	351.880	0.33	0.29	-0.15	
9498.00	90.460	338.960	5750.95	3525.12	3577.83	-531.97	1755832.01	14634620.89	40°17'43.9142"N	80°35'9.9169"W	3617.16	351.543	0.43	-0.42	0.06	
9592.00	90.370	338.930	5750.27	3619.11	3665.55	-565.74	1755798.25	14634708.57	40°17'44.7826"N	80°35'10.3474"W	3708.95	351.226	0.10	-0.10	-0.03	
9687.00	90.430	338.890	5749.61	3714.11	3754.18	-599.92	1755764.08	14634797.17	40°17'45.6600"N	80°35'10.7832"W	3801.82	350.921	0.08	0.06	-0.04	
9782.00	90.340	338.850	5748.97	3809.11	3842.80	-634.17	1755729.85	14634885.75	40°17'46.5372"N	80°35'11.2198"W	3894.77	350.629	0.10	-0.09	-0.04	
9877.00	90.620	339.030	5748.17	3904.10	3931.45	-668.30	1755695.73	14634974.37	40°17'47.4148"N	80°35'11.6550"W	3987.84	350.353	0.35	0.29	0.19	
9971.00	90.180	338.380	5747.52	3998.10	4019.03	-702.44	1755661.60	14635061.91	40°17'48.2818"N	80°35'12.0903"W	4079.95	350.086	0.84	-0.47	-0.69	
10067.00	90.860	339.360	5746.65	4094.09	4108.57	-737.04	1755627.01	14635151.42	40°17'49.1682"N	80°35'12.5315"W	4174.15	349.830	1.24	0.71	1.02	
10161.00	90.310	338.430	5745.69	4188.08	4196.25	-770.89	1755593.18	14635239.07	40°17'50.0363"N	80°35'12.9630"W	4266.48	349.590	1.15	-0.59	-0.99	
10257.00	90.740	338.900	5744.81	4284.08	4285.67	-805.81	1755558.27	14635328.45	40°17'50.9215"N	80°35'13.4084"W	4360.77	349.351	0.66	0.45	0.49	
10351.00	90.740	338.810	5743.59	4378.07	4373.34	-839.72	1755524.38	14635416.08	40°17'51.7893"N	80°35'13.8407"W	4453.22	349.131	0.10	0.00	-0.10	
10446.00	90.460	338.810	5742.60	4473.07	4461.91	-874.06	1755490.05	14635504.62	40°17'52.6662"N	80°35'14.2785"W	4546.71	348.917	0.29	-0.29	0.00	
10542.00	90.340	339.200	5741.93	4569.06	4551.53	-908.45	1755455.67	14635594.21	40°17'53.5534"N	80°35'14.7170"W	4641.31	348.713	0.43	-0.13	0.41	
10636.00	90.680	338.870	5741.09	4663.05	4639.30	-942.08	1755422.05	14635681.95	40°17'54.4223"N	80°35'15.1458"W	4733.99	348.521	0.50	0.36	-0.35	
10731.00	90.340	339.100	5740.25	4758.05	4727.98	-976.15	1755388.00	14635770.59	40°17'55.3001"N	80°35'15.5801"W	4827.70	348.335	0.43	-0.36	0.24	
10825.00	90.090	338.890	5739.89	4852.04	4815.74	-1009.84	1755354.32	14635858.31	40°17'56.1688"N	80°35'16.0097"W	4920.48	348.157	0.35	-0.27	-0.22	
10920.00	90.680	337.870	5739.26	4947.04	4904.05	-1044.84	1755319.33	14635946.59	40°17'57.0431"N	80°35'16.4561"W	5014.12	347.973	1.24	0.62	-1.07	
11015.00	90.950	339.130	5737.90	5042.03	4992.43	-1079.66	1755284.53	14636034.94	40°17'57.9181"N	80°35'16.9001"W	5107.84	347.797	1.36	0.28	1.33	
11110.00	91.480	340.090	5735.89	5136.99	5081.45	-1112.75	1755251.45	14636123.93	40°17'58.7993"N	80°35'17.3218"W	5201.86	347.648	1.15	0.56	1.01	
11205.00	90.520	339.290	5734.23	5231.96	5170.53	-1145.72	1755218.50	14636212.97	40°17'59.6811"N	80°35'17.7420"W	5295.95	347.506	1.32	-1.01	-0.84	
11301.00	90.220	338.750	5733.61	5327.95	5260.16	-1180.09	1755184.14	14636302.57	40°18'0.5684"N	80°35'18.1802"W	5390.91	347.355	0.64	-0.31	-0.56	
11395.00	90.400	338.660	5733.10	5421.95	5347.75	-1214.23	1755150.01	14636390.12	40°18'1.4354"N	80°35'18.6156"W	5483.86	347.208	0.21	0.19	-0.10	

RECEIVED  
 Department of  
 Oil and Gas  
 Environmental Protection  
 10 2021





# Actual Wellpath Report

OV Royalty Trust LLC BRK 5H AWP Proj: 26584'  
Page 6 of 13



### REFERENCE WELLPATH IDENTIFICATION

Operator	SWN PRODUCTION COMPANY, LLC	Well	OV Royalty Trust LLC BRK 5H
Field	Brooke	API	47-009-00318-00-00
Facility	OV Royalty Trust LLC Pad	Wellbore	OV Royalty Trust LLC BRK 5H AWB
Slot	Slot #05		

### WELLPATH DATA (279 stations)

MD [ft]	Inclination [°]	Azimuth [°]	TVD [ft]	Vert Sect [ft]	North [ft]	East [ft]	Grid East [US ft]	Grid North [US ft]	Latitude	Longitude	Closure Dist [ft]	Closure Dir [°]	DLS [°/100ft]	Build Rate [°/100ft]	Turn Rate [°/100ft]
11491.00	90.680	339.260	5732.20	5517.94	5437.34	-1248.69	1755115.56	14636479.68	40°18'2.3223"N	80°35'19.0550"W	5578.88	347.066	0.69	0.29	0.62
11586.00	90.460	338.460	5731.25	5612.94	5525.94	-1282.95	1755081.32	14636568.25	40°18'3.1994"N	80°35'19.4918"W	5672.92	346.929	0.87	-0.23	-0.84
11681.00	90.950	338.820	5730.08	5707.93	5614.41	-1317.55	1755046.73	14636656.68	40°18'4.0752"N	80°35'19.9331"W	5766.93	346.793	0.64	0.52	0.38
11776.00	90.460	338.990	5728.92	5802.92	5703.04	-1351.74	1755012.55	14636745.27	40°18'4.9526"N	80°35'20.3690"W	5861.04	346.666	0.55	-0.52	0.18
11872.00	90.860	338.900	5727.81	5898.91	5792.62	-1386.23	1754978.08	14636834.82	40°18'5.8394"N	80°35'20.8088"W	5956.18	346.542	0.43	0.42	-0.09
11968.00	90.370	338.930	5726.78	5994.90	5882.19	-1420.76	1754943.56	14636924.35	40°18'6.7261"N	80°35'21.2491"W	6051.34	346.421	0.51	-0.51	0.03
12065.00	90.580	339.120	5725.97	6091.90	5972.76	-1455.48	1754908.85	14637014.89	40°18'7.6226"N	80°35'21.6918"W	6147.54	346.305	0.29	0.22	0.20
12161.00	90.650	339.190	5724.94	6187.89	6062.47	-1489.64	1754874.71	14637104.56	40°18'8.5107"N	80°35'22.1273"W	6242.80	346.195	0.10	0.07	0.07
12257.00	90.580	338.980	5723.91	6283.88	6152.14	-1523.91	1754840.45	14637194.20	40°18'9.3984"N	80°35'22.5643"W	6338.07	346.088	0.23	-0.07	-0.22
12353.00	90.400	339.030	5723.09	6379.87	6241.76	-1558.30	1754806.07	14637283.79	40°18'10.2856"N	80°35'23.0028"W	6433.34	345.982	0.19	-0.19	0.05
12450.00	90.650	339.330	5722.20	6476.86	6332.42	-1592.78	1754771.61	14637374.42	40°18'11.1830"N	80°35'23.4424"W	6529.66	345.881	0.40	0.26	0.31
12547.00	90.680	338.560	5721.08	6573.85	6422.94	-1627.62	1754736.78	14637464.90	40°18'12.0791"N	80°35'23.8867"W	6625.96	345.780	0.79	0.03	-0.79
12644.00	90.490	338.120	5720.09	6670.85	6513.09	-1663.42	1754700.99	14637555.01	40°18'12.9715"N	80°35'24.3434"W	6722.15	345.673	0.49	-0.20	-0.45
12741.00	90.580	338.070	5719.18	6767.84	6603.08	-1699.61	1754664.82	14637644.97	40°18'13.8625"N	80°35'24.8051"W	6818.31	345.566	0.11	0.09	-0.05
12837.00	90.550	338.150	5718.24	6863.83	6692.15	-1735.40	1754629.04	14637734.01	40°18'14.7443"N	80°35'25.2617"W	6913.50	345.462	0.09	-0.03	0.08
12932.00	90.520	337.950	5717.35	6958.82	6780.26	-1770.91	1754593.55	14637822.08	40°18'15.6166"N	80°35'25.7147"W	7007.72	345.362	0.21	-0.03	-0.21
13025.00	90.550	338.050	5716.48	7051.81	6866.49	-1805.75	1754558.72	14637908.27	40°18'16.4702"N	80°35'26.1592"W	7099.96	345.266	0.11	0.03	0.11
13121.00	90.650	338.180	5715.48	7147.81	6955.56	-1841.53	1754522.96	14637997.32	40°18'17.3521"N	80°35'26.6158"W	7195.21	345.171	0.17	0.10	0.14
13218.00	90.550	338.190	5714.46	7244.80	7045.61	-1877.57	1754486.92	14638087.33	40°18'18.2436"N	80°35'27.0756"W	7291.50	345.078	0.10	-0.10	0.01
13315.00	90.740	337.820	5713.37	7341.79	7135.55	-1913.90	1754450.61	14638177.23	40°18'19.1339"N	80°35'27.5391"W	7387.76	344.986	0.43	0.20	-0.38
13411.00	90.590	337.970	5712.25	7437.77	7224.48	-1950.02	1754414.50	14638266.13	40°18'20.0144"N	80°35'28.0001"W	7483.03	344.895	0.22	-0.16	0.16
13506.00	90.520	337.900	5711.33	7532.76	7312.52	-1985.71	1754378.83	14638354.14	40°18'20.8860"N	80°35'28.4554"W	7577.34	344.808	0.10	-0.07	-0.07
13602.00	90.460	338.400	5710.51	7628.76	7401.62	-2021.43	1754343.12	14638443.20	40°18'21.7681"N	80°35'28.9113"W	7672.69	344.725	0.52	-0.06	0.52
13697.00	90.430	338.080	5709.77	7723.75	7489.85	-2056.65	1754307.91	14638531.39	40°18'22.6416"N	80°35'29.3606"W	7767.09	344.645	0.34	-0.03	-0.34
13791.00	90.490	338.210	5709.02	7817.74	7577.09	-2091.64	1754272.94	14638618.60	40°18'23.5053"N	80°35'29.8070"W	7860.49	344.568	0.15	0.06	0.14
13887.00	90.520	338.220	5708.17	7913.74	7666.23	-2127.27	1754237.32	14638707.71	40°18'24.3877"N	80°35'30.2616"W	7955.90	344.491	0.03	0.03	0.01
13981.00	90.650	338.330	5707.21	8007.73	7753.55	-2162.06	1754202.54	14638794.99	40°18'25.2522"N	80°35'30.7055"W	8049.35	344.419	0.18	0.14	0.12
14078.00	90.550	338.200	5706.20	8104.73	7843.65	-2197.98	1754166.64	14638885.06	40°18'26.1441"N	80°35'31.1637"W	8145.79	344.346	0.17	-0.10	-0.13
14175.00	90.460	337.930	5705.34	8201.72	7933.62	-2234.21	1754130.42	14638975.00	40°18'27.0349"N	80°35'31.6261"W	8242.21	344.272	0.29	-0.09	-0.28
14272.00	90.650	338.060	5704.40	8298.71	8023.55	-2270.56	1754094.09	14639064.89	40°18'27.9252"N	80°35'32.0898"W	8338.64	344.199	0.24	0.20	0.13

RECEIVED  
 Department of  
 Oil and Gas  
 10/2021





# Actual Wellpath Report

OV Royalty Trust LLC BRK 5H AWP Proj: 26584'  
Page 7 of 13



REFERENCE WELLPATH IDENTIFICATION			
Operator	SWN PRODUCTION COMPANY, LLC	Well	OV Royalty Trust LLC BRK 5H
Field	Brooke	API	47-009-00318-00-00
Facility	OV Royalty Trust LLC Pad	Wellbore	OV Royalty Trust LLC BRK 5H AWB
Slot	Slot #05		

WELLPATH DATA (279 stations)																
MD [ft]	Inclination [°]	Azimuth [°]	TVD [ft]	Vert Sect [ft]	North [ft]	East [ft]	Grid East [US ft]	Grid North [US ft]	Latitude	Longitude	Closure Dist [ft]	Closure Dir [°]	DLS [°/100ft]	Build Rate [°/100ft]	Turn Rate [°/100ft]	
14367.00	90.710	337.950	5703.28	8393.70	8111.63	-2306.13	1754058.53	14639152.94	40°18'28.7972"N	80°35'32.5438"W	8433.08	344.130	0.13	0.06	-0.12	
14464.00	90.740	338.140	5702.05	8490.68	8201.59	-2342.40	1754022.28	14639242.86	40°18'29.6878"N	80°35'33.0065"W	8529.53	344.061	0.20	0.03	0.20	
14561.00	90.520	338.000	5700.98	8587.67	8291.57	-2378.62	1753986.07	14639332.80	40°18'30.5785"N	80°35'33.4688"W	8626.00	343.993	0.27	-0.23	-0.14	
14657.00	90.800	338.180	5699.88	8683.66	8380.63	-2414.44	1753950.26	14639421.83	40°18'31.4602"N	80°35'33.9258"W	8721.49	343.928	0.35	0.29	0.19	
14753.00	90.580	338.360	5698.72	8779.66	8469.80	-2449.98	1753914.74	14639510.96	40°18'32.3430"N	80°35'34.3793"W	8817.02	343.867	0.30	-0.23	0.19	
14850.00	90.710	338.150	5697.63	8876.65	8559.89	-2485.92	1753878.82	14639601.02	40°18'33.2349"N	80°35'34.8378"W	8913.56	343.806	0.25	0.13	-0.22	
14946.00	90.520	338.000	5696.60	8972.64	8648.94	-2521.76	1753842.99	14639690.04	40°18'34.1165"N	80°35'35.2952"W	9009.08	343.745	0.25	-0.20	-0.16	
15041.00	90.430	338.100	5695.81	9067.63	8737.05	-2557.27	1753807.49	14639778.11	40°18'34.9888"N	80°35'35.7483"W	9103.61	343.686	0.14	-0.09	0.11	
15138.00	90.550	337.850	5694.98	9164.62	8826.97	-2593.64	1753771.13	14639868.00	40°18'35.8790"N	80°35'36.2125"W	9200.13	343.626	0.29	0.12	-0.26	
15235.00	90.490	338.400	5694.10	9261.61	8916.98	-2629.78	1753735.00	14639957.97	40°18'36.7701"N	80°35'36.6737"W	9296.68	343.568	0.57	-0.06	0.57	
15331.00	90.830	338.280	5692.99	9357.61	9006.20	-2665.21	1753699.59	14640047.16	40°18'37.6533"N	80°35'37.1257"W	9392.28	343.515	0.38	0.35	-0.13	
15427.00	90.650	338.050	5691.75	9453.60	9095.30	-2700.92	1753663.90	14640136.23	40°18'38.5354"N	80°35'37.5813"W	9487.86	343.461	0.30	-0.19	-0.24	
15525.00	90.580	338.020	5690.70	9551.58	9186.18	-2737.57	1753627.26	14640227.07	40°18'39.4352"N	80°35'38.0491"W	9585.42	343.405	0.08	-0.07	-0.03	
15621.00	90.520	338.060	5689.78	9647.58	9275.21	-2773.47	1753591.37	14640316.07	40°18'40.3166"N	80°35'38.5072"W	9681.00	343.352	0.08	-0.06	0.04	
15717.00	90.490	337.650	5688.93	9743.56	9364.13	-2809.65	1753555.20	14640404.95	40°18'41.1968"N	80°35'38.9690"W	9776.56	343.298	0.43	-0.03	-0.43	
15813.00	90.740	338.330	5687.90	9839.55	9453.13	-2845.63	1753519.24	14640493.91	40°18'42.0779"N	80°35'39.4281"W	9872.14	343.247	0.75	0.26	0.71	
15910.00	90.650	338.300	5686.73	9936.54	9543.26	-2881.47	1753483.42	14640584.01	40°18'42.9701"N	80°35'39.8854"W	9968.78	343.199	0.10	-0.09	-0.03	
16004.00	90.860	338.170	5685.49	10030.53	9630.55	-2916.32	1753448.58	14640671.26	40°18'43.8343"N	80°35'40.3302"W	10062.42	343.153	0.26	0.22	-0.14	
16098.00	90.680	337.790	5684.23	10124.52	9717.68	-2951.56	1753413.35	14640758.36	40°18'44.6969"N	80°35'40.7799"W	10156.03	343.105	0.45	-0.19	-0.40	
16192.00	90.740	337.950	5683.06	10218.51	9804.75	-2986.97	1753377.96	14640845.40	40°18'45.5589"N	80°35'41.2318"W	10249.64	343.057	0.18	0.06	0.17	
16289.00	90.680	337.810	5681.86	10315.49	9894.60	-3023.49	1753341.45	14640935.22	40°18'46.4485"N	80°35'41.6980"W	10346.24	343.008	0.16	-0.06	-0.14	
16386.00	90.710	337.870	5680.68	10412.48	9984.43	-3060.08	1753304.88	14641025.01	40°18'47.3378"N	80°35'42.1649"W	10442.84	342.960	0.07	0.03	0.06	
16483.00	90.680	338.250	5679.51	10509.46	10074.40	-3096.32	1753268.65	14641114.94	40°18'48.2285"N	80°35'42.6274"W	10539.48	342.915	0.39	-0.03	0.39	
16579.00	90.860	337.990	5678.22	10605.45	10163.48	-3132.09	1753232.89	14641203.99	40°18'49.1103"N	80°35'43.0840"W	10635.14	342.872	0.33	0.19	-0.27	
16675.00	90.770	338.140	5676.85	10701.44	10252.52	-3167.95	1753197.05	14641292.99	40°18'49.9918"N	80°35'43.5416"W	10730.80	342.829	0.18	-0.09	0.16	
16771.00	90.520	337.720	5675.77	10797.43	10341.48	-3204.01	1753160.99	14641381.92	40°18'50.8725"N	80°35'44.0019"W	10826.44	342.786	0.51	-0.26	-0.44	
16868.00	90.950	338.180	5674.53	10894.41	10431.37	-3240.43	1753124.60	14641471.78	40°18'51.7625"N	80°35'44.4667"W	10923.09	342.743	0.65	0.44	0.47	
16964.00	90.800	337.980	5673.06	10990.40	10520.42	-3276.26	1753088.78	14641560.80	40°18'52.6441"N	80°35'44.9240"W	11018.77	342.702	0.26	-0.16	-0.21	
17059.00	90.980	337.390	5671.58	11085.37	10608.30	-3312.33	1753052.72	14641648.64	40°18'53.5140"N	80°35'45.3844"W	11113.39	342.660	0.65	0.19	-0.62	
17155.00	91.780	338.660	5669.27	11181.34	10697.30	-3348.24	1753016.82	14641737.60	40°18'54.3951"N	80°35'45.8428"W	11209.05	342.620	1.56	0.83	1.32	

RECEIVED  
 Department of Oil and Gas  
 Mineral Protection  
 JUN 10 2021





# Actual Wellpath Report

OV Royalty Trust LLC BRK 5H AWP Proj: 26584'  
Page 8 of 13



## REFERENCE WELLPATH IDENTIFICATION

Operator	SWN PRODUCTION COMPANY, LLC	Well	OV Royalty Trust LLC BRK 5H
Field	Brooke	API	47-009-00318-00-00
Facility	OV Royalty Trust LLC Pad	Wellbore	OV Royalty Trust LLC BRK 5H AWB
Slot	Slot #05		

## WELLPATH DATA (279 stations)

MD [ft]	Inclination [°]	Azimuth [°]	TVD [ft]	Vert Sect [ft]	North [ft]	East [ft]	Grid East [US ft]	Grid North [US ft]	Latitude	Longitude	Closure Dist [ft]	Closure Dir [°]	DLS [°/100ft]	Build Rate [°/100ft]	Turn Rate [°/100ft]
17251.00	90.580	337.930	5667.29	11277.31	10786.47	-3383.73	1752981.34	14641826.74	40°18'55.2779"N	80°35'46.2957"W	11304.76	342.583	1.46	-1.25	-0.76
17348.00	90.860	337.800	5666.08	11374.30	10876.31	-3420.28	1752944.81	14641916.55	40°18'56.1673"N	80°35'46.7622"W	11401.42	342.543	0.32	0.29	-0.13
17444.00	90.980	338.240	5664.53	11470.28	10965.32	-3456.21	1752908.90	14642005.52	40°18'57.0485"N	80°35'47.2208"W	11497.12	342.505	0.48	0.12	0.46
17540.00	90.800	337.790	5663.04	11566.26	11054.33	-3492.14	1752872.98	14642094.50	40°18'57.9297"N	80°35'47.6794"W	11592.81	342.468	0.50	-0.19	-0.47
17636.00	90.950	338.200	5661.58	11662.25	11143.33	-3528.11	1752837.03	14642183.46	40°18'58.8107"N	80°35'48.1385"W	11688.51	342.432	0.45	0.16	0.43
17732.00	90.460	338.200	5660.40	11758.24	11232.45	-3563.76	1752801.39	14642272.55	40°18'59.6931"N	80°35'48.5934"W	11784.24	342.397	0.51	-0.51	0.00
17828.00	90.550	339.400	5659.55	11854.23	11321.95	-3598.47	1752766.69	14642362.01	40°19'0.5790"N	80°35'49.0363"W	11880.05	342.368	1.25	0.09	1.25
17924.00	90.370	339.920	5658.78	11950.21	11411.96	-3631.84	1752733.34	14642451.99	40°19'1.4700"N	80°35'49.4618"W	11975.94	342.346	0.57	-0.19	0.54
18020.00	90.400	339.020	5658.13	12046.20	11501.86	-3665.50	1752699.68	14642541.86	40°19'2.3599"N	80°35'49.8911"W	12071.82	342.324	0.94	0.03	-0.94
18115.00	90.550	339.140	5657.35	12141.19	11590.60	-3699.42	1752665.78	14642630.56	40°19'3.2382"N	80°35'50.3238"W	12166.66	342.298	0.20	0.16	0.13
18211.00	90.770	338.880	5656.24	12237.18	11680.22	-3733.81	1752631.41	14642720.14	40°19'4.1254"N	80°35'50.7624"W	12262.50	342.273	0.35	0.23	-0.27
18308.00	90.580	339.350	5655.10	12334.17	11770.84	-3768.39	1752596.84	14642810.73	40°19'5.0224"N	80°35'51.2035"W	12359.35	342.248	0.52	-0.20	0.48
18404.00	90.520	339.160	5654.18	12430.16	11860.61	-3802.39	1752562.85	14642900.47	40°19'5.9111"N	80°35'51.6372"W	12455.21	342.225	0.21	-0.06	-0.20
18501.00	90.920	339.190	5652.96	12527.15	11951.27	-3836.87	1752528.38	14642991.09	40°19'6.8084"N	80°35'52.0770"W	12552.07	342.201	0.41	0.41	0.03
18598.00	90.520	338.860	5651.74	12624.13	12041.83	-3871.59	1752493.68	14643081.62	40°19'7.7049"N	80°35'52.5199"W	12648.91	342.177	0.53	-0.41	-0.34
18695.00	90.830	339.080	5650.50	12721.13	12132.37	-3906.40	1752458.88	14643172.12	40°19'8.6011"N	80°35'52.9640"W	12745.75	342.152	0.39	0.32	0.23
18791.00	90.860	339.150	5649.18	12817.11	12222.05	-3940.62	1752424.68	14643261.76	40°19'9.4889"N	80°35'53.4005"W	12841.61	342.130	0.08	0.03	0.07
18888.00	90.710	339.050	5647.85	12914.10	12312.66	-3975.22	1752390.09	14643352.34	40°19'10.3858"N	80°35'53.8418"W	12938.47	342.107	0.19	-0.15	-0.10
18984.00	90.830	339.170	5646.56	13010.09	12402.34	-4009.44	1752355.88	14643441.98	40°19'11.2735"N	80°35'54.2785"W	13034.33	342.085	0.18	0.12	0.12
19081.00	90.800	339.320	5645.18	13107.07	12493.04	-4043.82	1752321.52	14643532.65	40°19'12.1713"N	80°35'54.7169"W	13131.20	342.064	0.16	-0.03	0.15
19178.00	90.710	338.970	5643.90	13204.06	12583.67	-4078.34	1752287.00	14643623.25	40°19'13.0685"N	80°35'55.1574"W	13228.07	342.043	0.37	-0.09	-0.36
19275.00	90.860	339.260	5642.57	13301.04	12674.29	-4112.92	1752252.44	14643713.83	40°19'13.9655"N	80°35'55.5984"W	13324.93	342.021	0.34	0.15	0.30
19371.00	90.800	339.050	5641.18	13397.03	12764.00	-4147.08	1752218.30	14643803.50	40°19'14.8535"N	80°35'56.0342"W	13420.80	342.001	0.23	-0.06	-0.22
19467.00	90.550	338.610	5640.05	13493.02	12853.51	-4181.74	1752183.64	14643892.98	40°19'15.7396"N	80°35'56.4765"W	13516.65	341.978	0.53	-0.26	-0.46
19564.00	90.740	339.130	5638.96	13590.01	12943.98	-4216.71	1752148.69	14643983.42	40°19'16.6352"N	80°35'56.9226"W	13613.50	341.956	0.57	0.20	0.54
19659.00	90.550	339.000	5637.89	13685.00	13032.71	-4250.65	1752114.76	14644072.11	40°19'17.5134"N	80°35'57.3556"W	13708.37	341.936	0.24	-0.20	-0.14
19755.00	90.920	338.850	5636.66	13780.99	13122.28	-4285.17	1752080.26	14644161.65	40°19'18.4001"N	80°35'57.7960"W	13804.23	341.915	0.42	0.39	-0.16
19851.00	90.460	338.790	5635.50	13876.99	13211.79	-4319.85	1752045.59	14644251.12	40°19'19.2861"N	80°35'58.2385"W	13900.09	341.894	0.48	-0.48	-0.06
19948.00	90.740	338.680	5634.49	13973.98	13302.18	-4355.03	1752010.42	14644341.47	40°19'20.1809"N	80°35'58.6874"W	13996.94	341.872	0.31	0.29	-0.11
20044.00	91.080	339.350	5632.96	14069.96	13391.80	-4389.40	1751976.06	14644431.06	40°19'21.0680"N	80°35'59.1260"W	14092.80	341.853	0.78	0.35	0.70

RECEIVED  
 Department of  
 Oil and Gas  
 Environmental Protection  
 10 2021



### REFERENCE WELLPATH IDENTIFICATION

Operator	SWN PRODUCTION COMPANY, LLC	Well	OV Royalty Trust LLC BRK 5H
Field	Brooke	API	47-009-00318-00-00
Facility	OV Royalty Trust LLC Pad	Wellbore	OV Royalty Trust LLC BRK 5H AWB
Slot	Slot #05		

### WELLPATH DATA (279 stations)

MD [ft]	Inclination [°]	Azimuth [°]	TVD [ft]	Vert Sect [ft]	North [ft]	East [ft]	Grid East [US ft]	Grid North [US ft]	Latitude	Longitude	Closure Dist [ft]	Closure Dir [°]	DLS [°/100ft]	Build Rate [°/100ft]	Turn Rate [°/100ft]
20141.00	90.740	339.140	5631.42	14166.95	13482.49	-4423.77	1751941.71	14644521.72	40°19'21.9658"N	80°35'59.5644"W	14189.69	341.835	0.41	-0.35	-0.22
20237.00	90.800	339.320	5630.13	14262.93	13572.24	-4457.81	1751907.68	14644611.44	40°19'22.8542"N	80°35'59.9987"W	14285.59	341.817	0.20	0.06	0.19
20333.00	90.520	338.890	5629.03	14358.92	13661.93	-4492.05	1751873.46	14644701.08	40°19'23.7419"N	80°36'0.4355"W	14381.47	341.799	0.53	-0.29	-0.45
20430.00	90.620	339.520	5628.06	14455.91	13752.60	-4526.49	1751839.03	14644791.72	40°19'24.6395"N	80°36'0.8748"W	14478.37	341.782	0.66	0.10	0.65
20526.00	90.890	339.240	5626.80	14551.89	13842.44	-4560.29	1751805.24	14644881.53	40°19'25.5288"N	80°36'1.3060"W	14574.28	341.766	0.41	0.28	-0.29
20623.00	90.980	339.120	5625.21	14648.87	13933.10	-4594.76	1751770.78	14644972.15	40°19'26.4261"N	80°36'1.7458"W	14671.16	341.749	0.15	0.09	-0.12
20720.00	90.860	338.870	5623.66	14745.86	14023.64	-4629.53	1751736.03	14645062.66	40°19'27.3224"N	80°36'2.1893"W	14768.04	341.731	0.29	-0.12	-0.26
20817.00	90.950	339.010	5622.12	14842.84	14114.15	-4664.38	1751701.19	14645153.13	40°19'28.2183"N	80°36'2.6340"W	14864.91	341.713	0.17	0.09	0.14
20914.00	90.860	339.390	5620.59	14939.83	14204.82	-4698.82	1751666.76	14645243.76	40°19'29.1158"N	80°36'3.0734"W	14961.81	341.696	0.40	-0.09	0.39
21011.00	90.890	339.280	5619.11	15036.81	14295.56	-4733.05	1751632.55	14645334.48	40°19'30.0141"N	80°36'3.5100"W	15058.72	341.681	0.12	0.03	-0.11
21106.00	90.980	339.080	5617.56	15131.79	14384.35	-4766.81	1751598.80	14645423.23	40°19'30.8929"N	80°36'3.9408"W	15153.61	341.665	0.23	0.09	-0.21
21202.00	90.980	339.070	5615.92	15227.77	14474.00	-4801.09	1751564.53	14645512.85	40°19'31.7804"N	80°36'4.3782"W	15249.50	341.649	0.01	0.00	-0.01
21299.00	91.510	339.490	5613.81	15324.74	14564.71	-4835.40	1751530.24	14645603.52	40°19'32.6782"N	80°36'4.8159"W	15346.40	341.634	0.70	0.55	0.43
21396.00	91.420	339.300	5611.33	15421.70	14655.47	-4869.53	1751496.12	14645694.25	40°19'33.5767"N	80°36'5.2512"W	15443.29	341.620	0.22	-0.09	-0.20
21491.00	91.540	338.990	5608.88	15516.66	14744.22	-4903.34	1751462.33	14645782.96	40°19'34.4551"N	80°36'5.6825"W	15538.17	341.605	0.35	0.13	-0.33
21587.00	90.860	338.820	5606.87	15612.64	14833.77	-4937.88	1751427.80	14645872.47	40°19'35.3415"N	80°36'6.1234"W	15634.04	341.588	0.73	-0.71	-0.18
21685.00	90.550	338.840	5605.66	15710.63	14925.15	-4973.27	1751392.42	14645963.82	40°19'36.2461"N	80°36'6.5750"W	15731.92	341.571	0.32	-0.32	0.02
21782.00	90.650	339.380	5604.65	15807.62	15015.76	-5007.86	1751357.85	14646054.40	40°19'37.1431"N	80°36'7.0162"W	15828.83	341.556	0.57	0.10	0.56
21878.00	90.770	339.130	5603.46	15903.61	15105.53	-5041.86	1751323.86	14646144.13	40°19'38.0317"N	80°36'7.4500"W	15924.74	341.542	0.29	0.12	-0.26
21974.00	90.950	339.050	5602.02	15999.59	15195.20	-5076.12	1751289.62	14646233.77	40°19'38.9193"N	80°36'7.8872"W	16020.65	341.528	0.21	0.19	-0.08
22070.00	90.800	338.980	5600.55	16095.58	15284.82	-5110.49	1751255.25	14646323.35	40°19'39.8064"N	80°36'8.3258"W	16116.54	341.513	0.17	-0.16	-0.07
22166.00	90.770	338.940	5599.23	16191.57	15374.41	-5144.95	1751220.80	14646412.91	40°19'40.6932"N	80°36'8.7656"W	16212.44	341.497	0.05	-0.03	-0.04
22262.00	90.950	338.980	5597.79	16287.56	15464.00	-5179.42	1751186.36	14646502.47	40°19'41.5801"N	80°36'9.2053"W	16308.33	341.483	0.19	0.19	0.04
22359.00	90.830	339.260	5596.29	16384.54	15554.62	-5213.98	1751151.80	14646593.05	40°19'42.4771"N	80°36'9.6464"W	16405.24	341.469	0.31	-0.12	0.29
22456.00	90.770	338.980	5594.93	16481.53	15645.24	-5248.55	1751117.25	14646683.63	40°19'43.3741"N	80°36'10.0875"W	16502.15	341.455	0.30	-0.06	-0.29
22552.00	90.740	339.000	5593.67	16577.52	15734.85	-5282.97	1751082.84	14646773.21	40°19'44.2611"N	80°36'10.5267"W	16598.05	341.441	0.04	-0.03	0.02
22648.00	90.860	338.910	5592.33	16673.50	15824.44	-5317.44	1751048.39	14646862.76	40°19'45.1479"N	80°36'10.9666"W	16693.95	341.426	0.16	0.13	-0.09
22744.00	90.680	338.950	5591.04	16769.49	15914.02	-5351.95	1751013.89	14646952.30	40°19'46.0346"N	80°36'11.4069"W	16789.86	341.412	0.19	-0.19	0.04
22841.00	90.460	339.230	5590.07	16866.49	16004.62	-5386.57	1750979.29	14647042.87	40°19'46.9315"N	80°36'11.8487"W	16886.77	341.399	0.37	-0.23	0.29
22938.00	91.140	339.320	5588.72	16963.47	16095.34	-5420.89	1750944.98	14647133.55	40°19'47.8294"N	80°36'12.2866"W	16983.69	341.387	0.71	0.70	0.09

RECEIVED  
 Department of  
 Oil and Gas  
 10/2021  
 Division of  
 Geographical  
 Protection





# Actual Wellpath Report

OV Royalty Trust LLC BRK 5H AWP Proj: 26584'  
Page 10 of 13



### REFERENCE WELLPATH IDENTIFICATION

Operator	SWN PRODUCTION COMPANY, LLC	Well	OV Royalty Trust LLC BRK 5H
Field	Brooke	API	47-009-00318-00-00
Facility	OV Royalty Trust LLC Pad	Wellbore	OV Royalty Trust LLC BRK 5H AWB
Slot	Slot #05		

### WELLPATH DATA (279 stations)

MD [ft]	Inclination [°]	Azimuth [°]	TVD [ft]	Vert Sect [ft]	North [ft]	East [ft]	Grid East [US ft]	Grid North [US ft]	Latitude	Longitude	Closure Dist [ft]	Closure Dir [°]	DLS [°/100ft]	Build Rate [°/100ft]	Turn Rate [°/100ft]
23034.00	90.680	338.830	5587.19	17059.45	16184.99	-5455.17	1750910.71	14647223.18	40°19'48.7169"N	80°36'12.7241"W	17079.60	341.374	0.70	-0.48	-0.51
23130.00	90.460	339.090	5586.24	17155.45	16274.59	-5489.64	1750876.26	14647312.74	40°19'49.6037"N	80°36'13.1639"W	17175.51	341.360	0.35	-0.23	0.27
23225.00	90.430	338.440	5585.50	17250.44	16363.13	-5524.04	1750841.86	14647401.25	40°19'50.4803"N	80°36'13.6030"W	17270.41	341.346	0.68	-0.03	-0.68
23321.00	91.140	339.880	5584.18	17346.42	16452.84	-5558.19	1750807.73	14647490.92	40°19'51.3682"N	80°36'14.0388"W	17366.33	341.334	1.67	0.74	1.50
23416.00	90.620	339.120	5582.73	17441.40	16541.81	-5591.46	1750774.47	14647579.86	40°19'52.2489"N	80°36'14.4632"W	17461.27	341.324	0.97	-0.55	-0.80
23511.00	90.890	339.200	5581.47	17536.39	16630.59	-5625.25	1750740.69	14647668.60	40°19'53.1277"N	80°36'14.8944"W	17556.20	341.312	0.30	0.28	0.08
23605.00	90.520	338.690	5580.32	17630.38	16718.31	-5659.02	1750706.94	14647756.29	40°19'53.9959"N	80°36'15.3253"W	17650.11	341.299	0.67	-0.39	-0.54
23700.00	90.710	339.470	5579.30	17725.37	16807.04	-5692.94	1750673.03	14647844.98	40°19'54.8743"N	80°36'15.7582"W	17745.03	341.288	0.85	0.20	0.82
23796.00	90.770	339.340	5578.06	17821.35	16896.90	-5726.70	1750639.28	14647934.81	40°19'55.7637"N	80°36'16.1890"W	17840.97	341.277	0.15	0.06	-0.14
23890.00	90.710	337.000	5576.84	17915.33	16984.14	-5761.65	1750604.34	14648022.02	40°19'56.6274"N	80°36'16.6353"W	17934.82	341.261	2.49	-0.06	-2.49
23985.00	90.650	337.740	5575.72	18010.31	17071.82	-5798.20	1750567.81	14648109.66	40°19'57.4954"N	80°36'17.1022"W	18029.60	341.241	0.78	-0.06	0.78
24080.00	91.050	337.970	5574.31	18105.29	17159.81	-5834.01	1750532.01	14648197.61	40°19'58.3664"N	80°36'17.5594"W	18124.42	341.223	0.49	0.42	0.24
24177.00	91.230	338.170	5572.38	18202.26	17249.77	-5870.23	1750495.81	14648287.54	40°19'59.2570"N	80°36'18.0219"W	18221.25	341.206	0.28	0.19	0.21
24273.00	91.260	337.970	5570.29	18298.24	17338.80	-5906.08	1750459.98	14648376.54	40°20'0.1383"N	80°36'18.4797"W	18317.09	341.190	0.21	0.03	-0.21
24369.00	90.710	337.960	5568.64	18394.22	17427.78	-5942.09	1750423.98	14648465.48	40°20'1.0191"N	80°36'18.9395"W	18412.92	341.173	0.57	-0.57	-0.01
24466.00	90.620	338.070	5567.51	18491.20	17517.72	-5978.40	1750387.68	14648555.38	40°20'1.9095"N	80°36'19.4032"W	18509.77	341.156	0.15	-0.09	0.11
24563.00	90.680	338.120	5566.41	18588.19	17607.71	-6014.58	1750351.51	14648645.34	40°20'2.8003"N	80°36'19.8653"W	18606.63	341.140	0.08	0.06	0.05
24657.00	90.680	338.090	5565.30	18682.19	17694.92	-6049.63	1750316.48	14648732.52	40°20'3.6637"N	80°36'20.3129"W	18700.49	341.125	0.03	0.00	-0.03
24752.00	90.650	338.100	5564.20	18777.18	17783.06	-6085.07	1750281.05	14648820.62	40°20'4.5362"N	80°36'20.7654"W	18795.35	341.110	0.03	-0.03	0.01
24847.00	90.740	337.940	5563.04	18872.16	17871.14	-6120.63	1750245.51	14648908.67	40°20'5.4082"N	80°36'21.2195"W	18890.21	341.094	0.19	0.09	-0.17
24942.00	90.770	338.010	5561.79	18967.15	17959.20	-6156.25	1750209.90	14648996.70	40°20'6.2800"N	80°36'21.6744"W	18985.06	341.079	0.08	0.03	0.07
25037.00	90.580	337.890	5560.67	19062.14	18047.25	-6191.91	1750174.25	14649084.71	40°20'7.1516"N	80°36'22.1298"W	19079.91	341.063	0.24	-0.20	-0.13
25132.00	90.830	338.110	5559.50	19157.12	18135.32	-6227.50	1750138.68	14649172.75	40°20'8.0235"N	80°36'22.5843"W	19174.77	341.048	0.35	0.26	0.23
25226.00	91.200	337.600	5557.84	19251.10	18222.38	-6262.92	1750103.27	14649259.77	40°20'8.8852"N	80°36'23.0368"W	19268.61	341.032	0.67	0.39	-0.54
25322.00	90.920	337.590	5556.06	19347.07	18311.11	-6299.51	1750066.70	14649348.47	40°20'9.7637"N	80°36'23.5041"W	19364.42	341.015	0.29	-0.29	-0.01
25417.00	91.080	337.860	5554.41	19442.05	18399.01	-6335.51	1750030.71	14649436.34	40°20'10.6339"N	80°36'23.9640"W	19459.25	340.999	0.33	0.17	0.28
25512.00	90.830	338.210	5552.82	19537.03	18487.10	-6371.04	1749995.19	14649524.40	40°20'11.5059"N	80°36'24.4177"W	19554.11	340.985	0.45	-0.26	0.37
25607.00	90.830	337.980	5551.45	19632.01	18575.23	-6406.48	1749959.77	14649612.49	40°20'12.3784"N	80°36'24.8702"W	19648.98	340.971	0.24	0.00	-0.24
25704.00	90.860	338.260	5550.01	19729.00	18665.24	-6442.62	1749923.64	14649702.46	40°20'13.2693"N	80°36'25.3318"W	19745.85	340.957	0.29	0.03	0.29
25799.00	90.740	338.460	5548.69	19823.99	18753.53	-6477.65	1749888.62	14649790.72	40°20'14.1434"N	80°36'25.7791"W	19840.74	340.945	0.25	-0.13	0.21

RECEIVED  
 Department of  
 Oil and Gas  
 10/2021  
 Title Protection



REFERENCE WELLPATH IDENTIFICATION			
Operator	SWN PRODUCTION COMPANY, LLC	Well	OV Royalty Trust LLC BRK 5H
Field	Brooke	API	47-009-00318-00-00
Facility	OV Royalty Trust LLC Pad	Wellbore	OV Royalty Trust LLC BRK 5H AWB
Slot	Slot #05		

WELLPATH DATA (279 stations) † = interpolated, ‡ = extrapolated station																
MD [ft]	Inclination [°]	Azimuth [°]	TVD [ft]	Vert Sect [ft]	North [ft]	East [ft]	Grid East [US ft]	Grid North [US ft]	Latitude	Longitude	Closure Dist [ft]	Closure Dir [°]	DLS [°/100ft]	Build Rate [°/100ft]	Turn Rate [°/100ft]	
25894.00	91.200	338.420	5547.08	19918.98	18841.87	-6512.56	1749853.73	14649879.03	40°20'15.0179"N	80°36'26.2248"W	19935.64	340.933	0.49	0.48	-0.04	
25989.00	90.920	337.610	5545.32	20013.95	18929.95	-6548.12	1749818.18	14649967.07	40°20'15.8897"N	80°36'26.6789"W	20030.50	340.919	0.90	-0.29	-0.85	
26085.00	91.420	338.310	5543.36	20109.93	19018.91	-6584.13	1749782.18	14650056.00	40°20'16.7705"N	80°36'27.1389"W	20126.35	340.905	0.90	0.52	0.73	
26181.00	91.290	338.160	5541.09	20205.90	19108.05	-6619.72	1749746.61	14650145.10	40°20'17.6528"N	80°36'27.5934"W	20222.22	340.892	0.21	-0.14	-0.16	
26275.00	90.680	337.740	5539.48	20299.88	19195.16	-6655.00	1749711.34	14650232.18	40°20'18.5151"N	80°36'28.0440"W	20316.08	340.878	0.79	-0.65	-0.45	
26371.00	91.260	337.660	5537.85	20395.85	19283.96	-6691.43	1749674.93	14650320.95	40°20'19.3943"N	80°36'28.5093"W	20411.92	340.864	0.61	0.60	-0.08	
26465.00	93.380	339.110	5534.05	20489.77	19371.27	-6726.02	1749640.35	14650408.23	40°20'20.2586"N	80°36'28.9511"W	20505.75	340.852	2.73	2.26	1.54	
26559.00	92.030	338.010	5529.61	20583.66	19458.67	-6760.34	1749606.04	14650495.59	40°20'21.1237"N	80°36'29.3893"W	20599.56	340.842	1.85	-1.44	-1.17	
26584.00‡	92.030	338.010	5528.72	20608.64	19481.84	-6769.70	1749596.69	14650518.74	40°20'21.3530"N	80°36'29.5087"W	20624.52	340.838	0.00	0.00	0.00	

HOLE & CASING SECTIONS - Ref Wellbore: OV Royalty Trust LLC BRK 5H AWB    Ref Wellpath: OV Royalty Trust LLC BRK 5H AWP Proj: 26584'									
String/Diameter	Start MD [ft]	End MD [ft]	Interval [ft]	Start TVD [ft]	End TVD [ft]	Start N/S [ft]	Start E/W [ft]	End N/S [ft]	End E/W [ft]
20in Conductor	26.00	100.00	74.00	26.00	100.00	0.00	0.00	-0.07	-0.06
17.5in Open Hole	100.00	446.00	346.00	100.00	446.00	-0.07	-0.06	-0.96	-0.56
13.375in Casing Surface	26.00	446.00	420.00	26.00	446.00	0.00	0.00	-0.96	-0.56
12.25in Open Hole	446.00	1591.00	1145.00	446.00	1590.39	-0.96	-0.56	-9.68	31.39
9.625in Casing Intermediate	26.00	1557.00	1531.00	26.00	1556.46	0.00	0.00	-8.81	29.43
8.5in Open Hole	1591.00	26584.00	24993.00	1590.39	5528.72	-9.68	31.39	19481.84	-6769.70
5.5in Casing Production	26.00	26584.00	26558.00	26.00	5528.72	0.00	0.00	19481.84	-6769.70

RECEIVED  
Office of Oil and Gas  
JUN 10 2021  
WV Department of  
Environmental Protection



### REFERENCE WELLPATH IDENTIFICATION

Operator	SWN PRODUCTION COMPANY, LLC	Well	OV Royalty Trust LLC BRK 5H
Field	Brooke	API	47-009-00318-00-00
Facility	OV Royalty Trust LLC Pad	Wellbore	OV Royalty Trust LLC BRK 5H AWB
Slot	Slot #05		

### TARGETS

Name	TVD [ft]	North [ft]	East [ft]	Grid East [US ft]	Grid North [US ft]	Latitude	Longitude	Shape
OV Royalty Trust LLC BRK 5H BHL Rev-5	5571.26	22307.61	-7881.53	1748485.29	14653343.43	40°20'49.3248"N	80°36'43.7067"W	point
OV Royalty Trust LLC BRK 5H LP Rev-8	5775.00	575.17	640.14	1757003.66	14631619.39	40°17'14.1884"N	80°34'54.9733"W	point

### WELLPATH COMPOSITION - Ref Wellbore: OV Royalty Trust LLC BRK 5H AWB Ref Wellpath: OV Royalty Trust LLC BRK 5H AWP Proj: 26584'

Start MD [ft]	End MD [ft]	Positional Uncertainty Model	Log Name/Comment	Wellbore	Survey Date
26.00	404.00	OWSG MWD rev2 + HRGM	01_Premier MWD <17-1/2"> (224'-404')	OV Royalty Trust LLC BRK 5H AWB	1/27/2021
404.00	1509.00	OWSG MWD rev2 + HRGM	02_Premier MWD <12-1/4"> (593'-1509')	OV Royalty Trust LLC BRK 5H AWB	1/27/2021
1509.00	6360.00	BH AutoTrak Curve (2019) (X Short spacing)	03_BH AT Curve X Short <8-1/2"> (1618'-6360')	OV Royalty Trust LLC BRK 5H AWB	1/27/2021
6360.00	26584.00	BH AutoTrak Curve/eXpress (2019) (HRGM, Short spacing)	04_BH AT Curve <8-1/2"> (6457'-26559')	OV Royalty Trust LLC BRK 5H AWB	1/27/2021

RECEIVED  
 Office of Oil and Gas  
 JUN 10 2021  
 WV Department of  
 Environmental Protection

RE  
 Office



REFERENCE WELLPATH IDENTIFICATION			
Operator	SWN PRODUCTION COMPANY, LLC	Well	OV Royalty Trust LLC BRK 5H
Field	Brooke	API	47-009-00318-00-00
Facility	OV Royalty Trust LLC Pad	Wellbore	OV Royalty Trust LLC BRK 5H AWB
Slot	Slot #05		

COMMENTS
<p><b>Wellpath general comments</b>            API: 47-009-00318-0000            BH Job #: 110732177            Rig: SDC 41            Duration: 01/28/2021 - 01/31/2021</p>