

Location: Brooke County, WV
Field: Brooke
Facility: Brian Teslovich BRK Pad

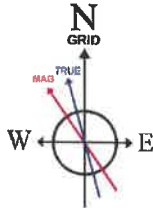
Slot: Slot 405H
Well: Brian Teslovich BRK 405H
Wellbore: Brian Teslovich BRK 405H PWB

Plot reference well/path is Brian Teslovich BRK 405H Rev A.0	Grid System: NAD83 / UTM Zone 17 North, US feet
True vertical depths are referenced to Rig on Slot 405H (KB)	North Reference: Grid north
Reference well/path measured depths are referenced to Rig on Slot 405H (KB)	Scale: True distance
Rig on Slot 405H (KB) to Mean Sea Level: 1175.6 feet	Coordinates are in feet referenced to Slot
Mean Sea Level to Ground level (At Slot: Slot 405H): -1149.6 feet	Depths are in feet
Offset well/path MDs are referenced to each path's default MD datum	Created by: tranlam on 2021-10-03; Database: WA_MPL_EASTERNUS_Defn

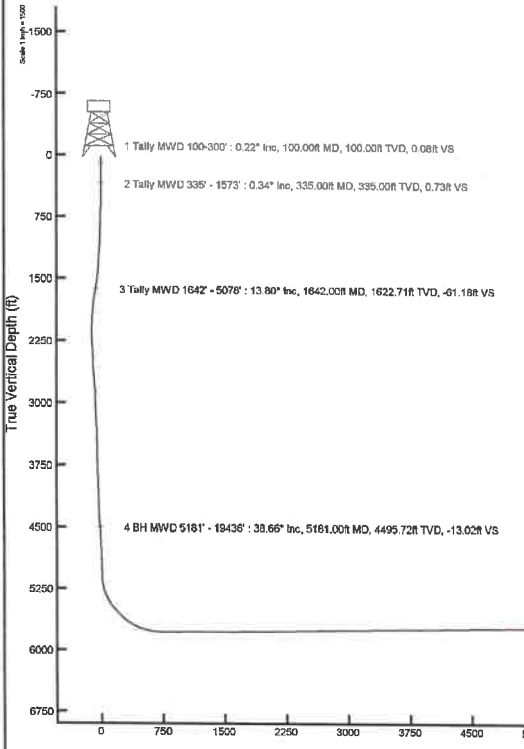
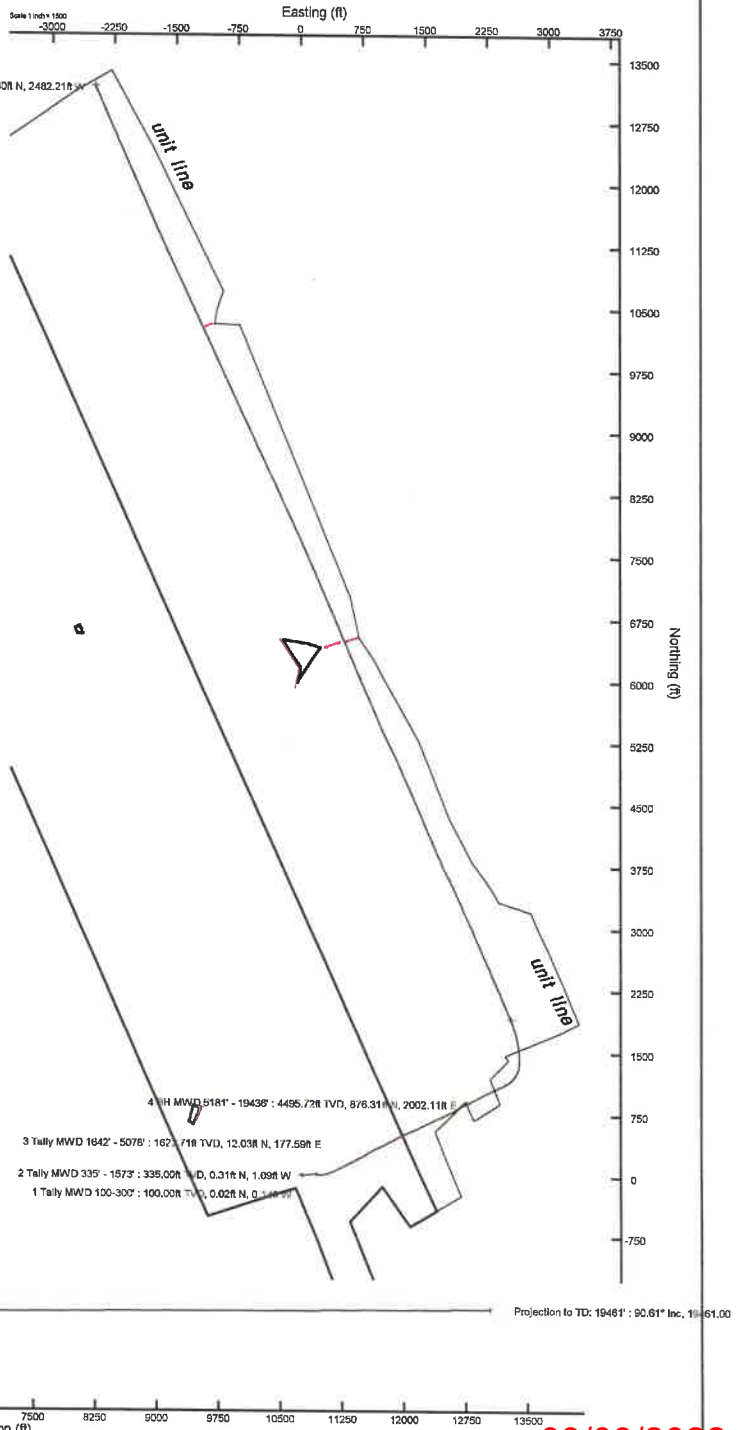
Location Information

Facility Name			Grid East (US ft)	Grid North (US ft)	Latitude	Longitude
Brian Teslovich BRK Pad			1742753.670	14605851.360	40°13'0.0784"N	80°38'0.2985"W
Slot	Local N (ft)	Local E (ft)	Grid East (US ft)	Grid North (US ft)	Latitude	Longitude
Slot 405H	-23.32	32.97	1742786.630	14605828.050	40°12'59.8468"N	80°37'59.8747"W
Rig on Slot 405H (KB) to Ground level (At Slot: Slot 405H)					26ft	
Mean Sea Level to Ground level (At Slot: Slot 405H)					-1149.6ft	
Rig on Slot 405H (KB) to Mean Sea Level					1175.6ft	

API: 47009003130000
BH JOB: 111083167
Duration 10.09.2021- 10.13.2021
Rig: SDC 40



HDGM2021v11.0 (1900.0 to 2022.0) Dip: 67.26° Field: 52168 nT
Magnetic North is 8.20 degrees West of True North (at 10/9/2021)
Grid North is 0.24 degrees East of True North
To correct azimuth from True to Grid subtract 0.24 degrees
To correct azimuth from Magnetic to Grid subtract 8.44 degrees



REFERENCE WELLPATH IDENTIFICATION			
Operator	SWN PRODUCTION COMPANY, LLC	Well	Brian Teslovich BRK 405H
Field	Brooke	API	47009003130000
Facility	Brian Teslovich BRK Pad	Wellbore	Brian Teslovich BRK 405H AWB
Slot	Slot 405H		

REPORT SETUP INFORMATION			
Projection System	NAD83 / UTM Zone 17 North, US feet	Software System	WellArchitect® 6.0
North Reference	Grid	User	Tranlam
Scale	0.999612	Report Generated	10/14/2021 at 12:17:21 PM
Convergence at slot	0.24° East	Database	WA_MPL_EASTERNUS_Defn

WELLPATH LOCATION						
	Local coordinates		Grid coordinates		Geographic coordinates	
	North[ft]	East[ft]	Easting[US ft]	Northing[US ft]	Latitude	Longitude
Slot Location	-23.32	32.97	1742786.63	14605828.05	40°12'59.8466"N	80°37'59.8747"W
Facility Reference Pt			1742753.67	14605851.36	40°13'0.0784"N	80°38'0.2985"W
Field Reference Pt			0.00	0.00	0°00'0.0000"	85°29'19.4780"W

WELLPATH DATUM			
Calculation method	Minimum curvature	SDC 40 (KB) to Facility Vertical Datum	1175.60ft
Horizontal Reference Pt	Slot	SDC 40 (KB) to Mean Sea Level	1175.60ft
Vertical Reference Pt	SDC 40 (KB)	SDC 40 (KB) to Ground Level at Slot (Slot 405H)	26.00ft
MD Reference Pt	SDC 40 (KB)	Section Origin	N 0.00, E 0.00 ft
Field Vertical Reference	Mean Sea Level	Section Azimuth	336.02°



Actual Wellpath Report

Brian Teslovich BRK 405H awp 100' - 19436' Proj: 19461'
Page 2 of 10



REFERENCE WELLPATH IDENTIFICATION			
Operator	SWN PRODUCTION COMPANY, LLC	Well	Brian Teslovich BRK 405H
Field	Brooke	API	47009003130000
Facility	Brian Teslovich BRK Pad	Wellbore	Brian Teslovich BRK 405H AWB
Slot	Slot 405H		

WELLPATH DATA (218 stations) † = interpolated, ‡ = extrapolated station														
MD [ft]	Course Length [ft]	Inclination [°]	Azimuth [°]	TVD [ft]	Vert Sect [ft]	North [ft]	East [ft]	Grid East [US ft]	Grid North [US ft]	Latitude	Longitude	Closure Dist [ft]	Closure Dir [°]	DLS [°/100ft]
0.00†	0.00	0.000	277.990	0.00	0.00	0.00	0.00	1742786.63	14605828.05	40°12'59.8466"N	80°37'59.8747"W	0.00	0.000	0.00
26.00	26.00	0.000	277.990	26.00	0.00	0.00	0.00	1742786.63	14605828.05	40°12'59.8466"N	80°37'59.8747"W	0.00	0.000	0.00
100.00	74.00	0.220	277.990	100.00	0.08	0.02	-0.14	1742786.49	14605828.07	40°12'59.8468"N	80°37'59.8765"W	0.14	277.990	0.30
200.00	100.00	0.250	307.550	200.00	0.37	0.18	-0.50	1742786.13	14605828.23	40°12'59.8484"N	80°37'59.8812"W	0.53	289.601	0.12
300.00	100.00	0.260	270.230	300.00	0.65	0.31	-0.90	1742785.73	14605828.36	40°12'59.8498"N	80°37'59.8863"W	0.96	289.120	0.16
335.00	35.00	0.340	269.720	335.00	0.73	0.31	-1.09	1742785.54	14605828.36	40°12'59.8498"N	80°37'59.8887"W	1.13	286.069	0.23
446.00	111.00	0.260	217.570	446.00	0.74	0.11	-1.57	1742785.06	14605828.16	40°12'59.8478"N	80°37'59.8949"W	1.57	274.076	0.25
537.00	91.00	0.500	134.990	536.99	0.27	-0.33	-1.41	1742785.22	14605827.72	40°12'59.8434"N	80°37'59.8929"W	1.45	256.775	0.59
628.00	91.00	1.480	95.430	627.98	-0.68	-0.72	0.04	1742786.67	14605827.33	40°12'59.8395"N	80°37'59.8743"W	0.73	177.164	1.25
719.00	91.00	2.830	87.110	718.91	-2.06	-0.72	3.45	1742790.08	14605827.33	40°12'59.8394"N	80°37'59.8303"W	3.52	101.828	1.52
810.00	91.00	4.490	85.870	809.73	-4.08	-0.35	9.25	1742795.87	14605827.70	40°12'59.8428"N	80°37'59.7555"W	9.25	92.184	1.83
902.00	92.00	6.450	81.970	901.30	-6.72	0.63	17.96	1742804.58	14605828.68	40°12'59.8521"N	80°37'59.6432"W	17.97	87.995	2.17
994.00	92.00	8.690	80.980	992.50	-9.94	2.44	29.94	1742816.56	14605830.49	40°12'59.8695"N	80°37'59.4886"W	30.04	85.340	2.44
1084.00	90.00	11.540	80.480	1081.09	-13.94	5.00	45.53	1742832.15	14605833.04	40°12'59.8941"N	80°37'59.2875"W	45.81	83.739	3.17
1175.00	91.00	13.440	81.520	1169.93	-19.04	8.06	64.97	1742851.58	14605836.11	40°12'59.9236"N	80°37'59.0367"W	65.47	82.928	2.10
1266.00	91.00	15.180	78.620	1258.10	-24.47	11.97	87.12	1742873.71	14605840.02	40°12'59.9614"N	80°37'58.7511"W	87.93	82.175	2.07
1356.00	90.00	14.960	80.570	1345.01	-29.96	16.20	110.13	1742896.71	14605844.24	40°13'0.0022"N	80°37'58.4543"W	111.31	81.632	0.61
1449.00	93.00	13.790	87.650	1435.10	-37.06	18.62	133.05	1742919.62	14605846.66	40°13'0.0252"N	80°37'58.1587"W	134.34	82.032	2.27
1540.00	91.00	13.500	97.160	1523.55	-46.55	17.74	154.42	1742940.99	14605845.79	40°13'0.0156"N	80°37'57.8832"W	155.44	83.446	2.48
1573.00	33.00	13.410	102.970	1555.64	-50.84	16.40	161.97	1742948.54	14605844.45	40°13'0.0021"N	80°37'57.7859"W	162.80	84.217	4.10
1642.00	69.00	13.800	108.250	1622.71	-61.18	12.03	177.59	1742964.15	14605840.08	40°12'59.9583"N	80°37'57.5849"W	177.99	86.125	1.89
1714.00	72.00	15.140	106.070	1692.42	-73.01	6.74	194.78	1742981.33	14605834.79	40°12'59.9053"N	80°37'57.3636"W	194.90	88.019	2.01
1805.00	91.00	18.240	90.120	1779.62	-86.48	3.42	220.46	1743007.00	14605831.46	40°12'59.8714"N	80°37'57.0327"W	220.49	89.112	6.05
1896.00	91.00	21.650	77.200	1865.20	-95.55	7.11	251.09	1743037.63	14605835.16	40°12'59.9066"N	80°37'56.6376"W	251.19	88.378	6.10
1987.00	91.00	25.460	73.380	1948.60	-101.32	16.43	286.22	1743072.74	14605844.47	40°12'59.9972"N	80°37'56.1843"W	286.69	86.716	4.51
2078.00	91.00	28.700	70.680	2029.62	-105.60	29.25	325.60	1743112.10	14605857.29	40°13'0.1224"N	80°37'55.6761"W	326.91	84.866	3.81
2170.00	92.00	31.540	67.180	2109.19	-107.88	45.90	368.63	1743155.12	14605873.93	40°13'0.2851"N	80°37'55.1204"W	371.48	82.903	3.63
2258.00	88.00	33.790	64.770	2183.27	-107.81	65.26	411.99	1743198.46	14605893.28	40°13'0.4747"N	80°37'54.5605"W	417.13	80.999	2.95
2348.00	90.00	34.390	61.390	2257.82	-105.22	88.10	456.95	1743243.40	14605916.12	40°13'0.6985"N	80°37'53.9798"W	465.36	79.087	2.21
2439.00	91.00	34.340	61.270	2332.93	-101.02	112.74	502.02	1743288.45	14605940.75	40°13'0.9402"N	80°37'53.3975"W	514.52	77.342	0.09



Actual Wellpath Report

Brian Teslovich BRK 405H awp 100' - 19436' Proj: 19461'
Page 3 of 10



REFERENCE WELLPATH IDENTIFICATION			
Operator	SWN PRODUCTION COMPANY, LLC	Well	Brian Teslovich BRK 405H
Field	Brooke	API	47009003130000
Facility	Brian Teslovich BRK Pad	Wellbore	Brian Teslovich BRK 405H AWB
Slot	Slot 405H		

WELLPATH DATA (218 stations)														
MD [ft]	Course Length [ft]	Inclination [°]	Azimuth [°]	TVD [ft]	Vert Sect [ft]	North [ft]	East [ft]	Grid East [US ft]	Grid North [US ft]	Latitude	Longitude	Closure Dist [ft]	Closure Dir [°]	DLS [°/100ft]
2530.00	91.00	35.460	61.950	2407.57	-97.02	137.49	547.82	1743334.24	14605965.49	40°13'1.1829"N	80°37'52.8057"W	564.81	75.911	1.30
2621.00	91.00	36.140	63.810	2481.37	-94.11	161.75	595.20	1743381.60	14605989.74	40°13'1.4207"N	80°37'52.1937"W	616.78	74.796	1.41
2713.00	92.00	36.380	62.990	2555.56	-91.62	186.12	643.85	1743430.23	14606014.09	40°13'1.6594"N	80°37'51.5653"W	670.21	73.877	0.59
2804.00	91.00	37.750	60.950	2628.17	-87.73	211.90	692.25	1743478.61	14606039.87	40°13'1.9122"N	80°37'50.9400"W	723.96	72.980	2.02
2895.00	91.00	39.180	59.320	2699.42	-81.92	240.10	741.33	1743527.67	14606068.05	40°13'2.1888"N	80°37'50.3058"W	779.24	72.054	1.93
2986.00	91.00	39.330	59.350	2769.89	-75.21	269.46	790.86	1743577.18	14606097.41	40°13'2.4770"N	80°37'49.6658"W	835.50	71.185	0.17
3076.00	90.00	38.630	62.210	2839.86	-70.03	297.10	840.25	1743626.55	14606125.04	40°13'2.7481"N	80°37'49.0276"W	891.23	70.527	2.14
3167.00	91.00	37.080	65.660	2911.71	-67.97	321.66	890.38	1743676.67	14606149.58	40°13'2.9887"N	80°37'48.3801"W	946.70	70.137	2.88
3258.00	91.00	35.960	64.090	2984.85	-66.90	344.64	939.41	1743725.68	14606172.56	40°13'3.2138"N	80°37'47.7468"W	1000.64	69.854	1.60
3348.00	90.00	36.360	61.660	3057.51	-63.98	368.85	986.67	1743772.91	14606196.76	40°13'3.4511"N	80°37'47.1364"W	1053.36	69.502	1.65
3439.00	91.00	36.210	61.750	3130.87	-59.93	394.38	1034.09	1743820.31	14606222.28	40°13'3.7014"N	80°37'46.5237"W	1106.74	69.124	0.17
3529.00	90.00	35.570	61.730	3203.78	-55.99	419.36	1080.56	1743866.77	14606247.25	40°13'3.9463"N	80°37'45.9234"W	1159.08	68.789	0.71
3620.00	91.00	35.770	61.520	3277.71	-51.93	444.58	1127.25	1743913.44	14606272.46	40°13'4.1936"N	80°37'45.3202"W	1211.75	68.476	0.26
3711.00	91.00	36.750	64.330	3351.09	-49.04	469.06	1175.16	1743961.34	14606296.92	40°13'4.4335"N	80°37'44.7011"W	1265.32	68.241	2.12
3801.00	90.00	37.560	63.780	3422.82	-47.17	492.84	1224.04	1744010.19	14606320.70	40°13'4.6665"N	80°37'44.0698"W	1319.53	68.069	0.97
3892.00	91.00	37.120	64.040	3495.17	-45.14	517.12	1273.61	1744059.75	14606344.96	40°13'4.9044"N	80°37'43.4295"W	1374.59	67.902	0.51
3983.00	91.00	37.940	65.560	3567.33	-43.96	540.71	1323.77	1744109.88	14606368.55	40°13'5.1354"N	80°37'42.7816"W	1429.94	67.782	1.36
4073.00	90.00	40.000	65.090	3637.30	-43.27	564.34	1375.20	1744161.29	14606392.17	40°13'5.3669"N	80°37'42.1174"W	1486.49	67.688	2.31
4165.00	92.00	40.680	63.260	3707.43	-41.35	590.29	1428.80	1744214.87	14606418.11	40°13'5.6210"N	80°37'41.4251"W	1545.93	67.553	1.48
4256.00	91.00	39.820	63.220	3776.88	-38.50	616.76	1481.30	1744267.35	14606444.57	40°13'5.8805"N	80°37'40.7469"W	1604.57	67.395	0.95
4348.00	92.00	40.270	64.860	3847.31	-36.46	642.67	1534.51	1744320.55	14606470.47	40°13'6.1343"N	80°37'40.0595"W	1663.66	67.276	1.25
4441.00	93.00	39.990	63.680	3918.42	-34.63	668.69	1588.51	1744374.52	14606496.48	40°13'6.3891"N	80°37'39.3621"W	1723.52	67.171	0.87
4532.00	91.00	39.300	63.900	3988.49	-32.37	694.33	1640.60	1744426.59	14606522.11	40°13'6.6404"N	80°37'38.6892"W	1781.48	67.061	0.77
4623.00	91.00	38.870	65.230	4059.13	-30.91	718.97	1692.41	1744478.38	14606546.74	40°13'6.8817"N	80°37'38.0200"W	1838.80	66.983	1.04
4714.00	91.00	39.230	65.070	4129.80	-30.04	743.07	1744.43	1744530.38	14606570.83	40°13'7.1177"N	80°37'37.3481"W	1896.10	66.928	0.41
4805.00	91.00	38.750	63.630	4200.53	-28.37	767.85	1796.04	1744581.97	14606595.60	40°13'7.3604"N	80°37'36.6815"W	1953.29	66.852	1.13
4896.00	91.00	38.140	62.060	4271.80	-25.24	793.66	1846.38	1744632.29	14606621.40	40°13'7.6134"N	80°37'36.0311"W	2009.74	66.740	1.26
4987.00	91.00	37.890	62.290	4343.50	-21.48	819.82	1895.95	1744681.84	14606647.55	40°13'7.8699"N	80°37'35.3908"W	2065.61	66.616	0.32
5078.00	91.00	38.320	61.970	4415.10	-17.67	846.07	1945.59	1744731.46	14606673.79	40°13'8.1272"N	80°37'34.7494"W	2121.59	66.497	0.52
5181.00	103.00	38.660	61.740	4495.72	-13.02	876.31	2002.11	1744787.96	14606704.02	40°13'8.4237"N	80°37'34.0191"W	2185.50	66.361	0.36



Actual Wellpath Report

Brian Teslovich BRK 405H awp 100' - 19436' Proj: 19461'
Page 4 of 10



REFERENCE WELLPATH IDENTIFICATION			
Operator	SWN PRODUCTION COMPANY, LLC	Well	Brian Teslovich BRK 405H
Field	Brooke	API	47009003130000
Facility	Brian Teslovich BRK Pad	Wellbore	Brian Teslovich BRK 405H AWB
Slot	Slot 405H		

WELLPATH DATA (218 stations)

MD [ft]	Course Length [ft]	Inclination [°]	Azimuth [°]	TVD [ft]	Vert Sect [ft]	North [ft]	East [ft]	Grid East [US ft]	Grid North [US ft]	Latitude	Longitude	Closure Dist [ft]	Closure Dir [°]	DLS ["/100ft]
5272.00	91.00	39.230	61.850	4566.50	-8.80	903.35	2052.52	1744838.35	14606731.05	40°13'8.6887"N	80°37'33.3679"W	2242.52	66.245	0.63
5362.00	90.00	39.020	64.520	4636.32	-5.99	928.96	2103.20	1744889.01	14606756.65	40°13'8.9398"N	80°37'32.7133"W	2299.22	66.169	1.89
5453.00	91.00	39.040	62.230	4707.02	-3.35	954.64	2154.42	1744940.21	14606782.32	40°13'9.1914"N	80°37'32.0516"W	2356.45	66.101	1.58
5545.00	92.00	38.910	62.750	4778.54	0.21	981.37	2205.74	1744991.51	14606809.04	40°13'9.4534"N	80°37'31.3885"W	2414.20	66.015	0.38
5635.00	90.00	38.890	63.660	4848.58	2.99	1006.85	2256.19	1745041.94	14606834.51	40°13'9.7030"N	80°37'30.7368"W	2470.65	65.951	0.64
5727.00	92.00	38.800	62.890	4920.24	5.75	1032.80	2307.73	1745093.46	14606860.44	40°13'9.9573"N	80°37'30.0710"W	2528.29	65.890	0.53
5820.00	93.00	38.870	63.890	4992.68	8.43	1058.92	2359.87	1745145.58	14606886.55	40°13'10.2132"N	80°37'29.3975"W	2586.56	65.833	0.68
5912.00	92.00	38.790	63.710	5064.35	10.66	1084.39	2411.62	1745197.31	14606912.01	40°13'10.4627"N	80°37'28.7289"W	2644.21	65.789	0.15
6004.00	92.00	38.840	62.240	5136.04	13.73	1110.59	2462.99	1745248.66	14606938.20	40°13'10.7195"N	80°37'28.0653"W	2701.80	65.729	1.00
6096.00	92.00	38.040	51.880	5208.17	22.56	1141.56	2510.87	1745296.52	14606969.16	40°13'11.0235"N	80°37'27.4464"W	2758.19	65.551	7.05
6188.00	92.00	38.110	40.660	5280.68	41.67	1180.64	2551.72	1745337.35	14607008.23	40°13'11.4080"N	80°37'26.9177"W	2811.61	65.171	7.51
6279.00	91.00	38.790	32.700	5351.99	69.37	1225.95	2585.44	1745371.06	14607053.53	40°13'11.8544"N	80°37'26.4806"W	2861.37	64.631	5.49
6370.00	91.00	41.470	21.740	5421.65	106.12	1278.01	2612.03	1745397.64	14607105.56	40°13'12.3677"N	80°37'26.1349"W	2907.92	63.929	8.29
6462.00	92.00	44.010	8.240	5489.36	154.54	1338.07	2627.93	1745413.54	14607165.60	40°13'12.9605"N	80°37'25.9266"W	2948.98	63.016	10.32
6553.00	91.00	47.530	1.200	5552.86	211.71	1402.97	2633.17	1745418.78	14607230.47	40°13'13.6017"N	80°37'25.8555"W	2983.61	61.951	6.76
6644.00	91.00	51.160	355.590	5612.17	275.53	1471.92	2631.15	1745416.75	14607299.39	40°13'14.2831"N	80°37'25.8779"W	3014.88	60.776	6.14
6734.00	90.00	57.190	353.110	5664.83	344.77	1544.49	2623.91	1745409.52	14607371.93	40°13'15.0005"N	80°37'25.9672"W	3044.72	59.518	7.06
6825.00	91.00	64.780	349.460	5708.95	421.49	1623.05	2611.77	1745397.38	14607450.47	40°13'15.7774"N	80°37'26.1194"W	3075.00	58.142	9.05
6916.00	91.00	71.580	344.780	5742.77	504.33	1705.31	2592.88	1745378.50	14607532.70	40°13'16.5911"N	80°37'26.3585"W	3103.40	56.667	8.87
7007.00	91.00	79.540	342.680	5765.44	591.59	1789.83	2568.18	1745353.81	14607617.18	40°13'17.4273"N	80°37'26.6722"W	3130.34	55.126	9.03
7097.00	90.00	86.300	339.600	5776.53	680.49	1874.28	2539.31	1745324.95	14607701.60	40°13'18.2630"N	80°37'27.0397"W	3156.11	53.569	8.24
7189.00	92.00	89.910	336.130	5779.57	772.36	1959.43	2504.68	1745290.33	14607786.71	40°13'19.1059"N	80°37'27.4816"W	3180.06	51.964	5.44
7280.00	91.00	90.090	336.590	5779.57	863.36	2042.79	2468.19	1745253.85	14607870.04	40°13'19.9312"N	80°37'27.9475"W	3203.89	50.387	0.54
7370.00	90.00	91.970	337.140	5777.96	953.33	2125.53	2432.83	1745218.51	14607952.76	40°13'20.7503"N	80°37'28.3987"W	3230.57	48.857	2.18
7461.00	91.00	90.550	336.250	5775.96	1044.30	2209.09	2396.84	1745182.54	14608036.28	40°13'21.5775"N	80°37'28.8581"W	3259.59	47.334	1.84
7553.00	92.00	89.940	336.370	5775.56	1136.29	2293.33	2359.88	1745145.59	14608120.49	40°13'22.4115"N	80°37'29.3301"W	3290.65	45.819	0.68
7643.00	90.00	89.880	336.550	5775.70	1226.29	2375.84	2323.93	1745109.65	14608202.97	40°13'23.2284"N	80°37'29.7890"W	3323.45	44.367	0.21
7735.00	92.00	90.220	336.790	5775.62	1318.28	2460.32	2287.50	1745073.23	14608287.41	40°13'24.0647"N	80°37'30.2541"W	3359.44	42.915	0.45
7825.00	90.00	89.820	336.520	5775.59	1408.28	2542.95	2251.83	1745037.58	14608370.01	40°13'24.8827"N	80°37'30.7093"W	3396.67	41.526	0.54
7916.00	91.00	90.890	336.330	5775.03	1499.27	2626.35	2215.44	1745001.20	14608453.38	40°13'25.7084"N	80°37'31.1740"W	3435.97	40.149	1.19



Actual Wellpath Report

Brian Teslovich BRK 405H awp 100' - 19436' Proj: 19461'
Page 5 of 10



REFERENCE WELLPATH IDENTIFICATION			
Operator	SWN PRODUCTION COMPANY, LLC	Well	Brian Teslovich BRK 405H
Field	Brooke	API	47009003130000
Facility	Brian Teslovich BRK Pad	Wellbore	Brian Teslovich BRK 405H AWB
Slot	Slot 405H		

WELLPATH DATA (218 stations)														
MD [ft]	Course Length [ft]	Inclination [°]	Azimuth [°]	TVD [ft]	Vert Sect [ft]	North [ft]	East [ft]	Grid East [US ft]	Grid North [US ft]	Latitude	Longitude	Closure Dist [ft]	Closure Dir [°]	DLS [°/100ft]
8007.00	91.00	90.890	336.570	5773.61	1590.26	2709.77	2179.08	1744964.86	14608536.76	40°13'26.5342"N	80°37'31.6381"W	3477.25	38.805	0.26
8098.00	91.00	90.710	336.300	5772.34	1681.25	2793.17	2142.71	1744928.50	14608620.13	40°13'27.3599"N	80°37'32.1025"W	3520.37	37.493	0.36
8189.00	91.00	91.200	336.730	5770.83	1772.23	2876.62	2106.45	1744892.26	14608703.55	40°13'28.1860"N	80°37'32.5654"W	3565.40	36.214	0.72
8278.00	89.00	90.250	338.380	5769.70	1861.19	2958.87	2072.47	1744858.29	14608785.76	40°13'29.0002"N	80°37'32.9990"W	3612.48	35.008	2.14
8366.00	88.00	90.620	335.890	5769.03	1949.16	3039.94	2038.28	1744824.12	14608866.81	40°13'29.8028"N	80°37'33.4353"W	3660.03	33.842	2.86
8457.00	91.00	90.370	334.980	5768.25	2040.15	3122.70	2000.45	1744786.30	14608949.53	40°13'30.6222"N	80°37'33.9185"W	3708.51	32.644	1.04
8548.00	91.00	91.230	336.640	5766.98	2131.14	3205.70	1963.17	1744749.03	14609032.50	40°13'31.4439"N	80°37'34.3947"W	3759.06	31.483	2.05
8638.00	90.00	91.080	335.480	5765.16	2221.12	3287.94	1926.66	1744712.54	14609114.71	40°13'32.2581"N	80°37'34.8609"W	3810.85	30.369	1.30
8730.00	92.00	90.860	336.730	5763.60	2313.10	3372.04	1889.40	1744675.29	14609198.77	40°13'33.0908"N	80°37'35.3367"W	3865.29	29.262	1.38
8820.00	90.00	91.690	336.300	5761.60	2403.08	3454.56	1853.54	1744639.45	14609281.27	40°13'33.9077"N	80°37'35.7945"W	3920.41	28.216	1.04
8911.00	91.00	90.860	334.030	5759.58	2494.04	3537.12	1815.33	1744601.26	14609363.79	40°13'34.7251"N	80°37'36.2826"W	3975.76	27.168	2.66
9002.00	91.00	91.140	332.500	5757.99	2584.92	3618.38	1774.40	1744560.34	14609445.02	40°13'35.5298"N	80°37'36.8059"W	4030.03	26.123	1.71
9092.00	90.00	90.150	332.390	5756.97	2674.74	3698.16	1732.77	1744518.73	14609524.77	40°13'36.3200"N	80°37'37.3383"W	4083.98	25.105	1.11
9183.00	91.00	91.480	337.850	5755.68	2765.68	3780.68	1694.51	1744480.48	14609607.25	40°13'37.1369"N	80°37'37.8271"W	4143.05	24.142	6.17
9274.00	91.00	92.430	335.860	5752.57	2856.61	3864.30	1658.76	1744444.74	14609690.84	40°13'37.9648"N	80°37'38.2834"W	4205.27	23.232	2.42
9364.00	90.00	90.980	337.090	5749.90	2946.56	3946.78	1622.86	1744408.85	14609773.29	40°13'38.7813"N	80°37'38.7419"W	4267.40	22.352	2.11
9455.00	91.00	90.220	336.660	5748.94	3037.55	4030.46	1587.12	1744373.13	14609856.94	40°13'39.6097"N	80°37'39.1981"W	4331.69	21.494	0.96
9546.00	91.00	90.740	337.530	5748.18	3128.53	4114.28	1551.70	1744337.73	14609940.73	40°13'40.4395"N	80°37'39.6502"W	4397.17	20.664	1.11
9637.00	91.00	90.090	337.150	5747.52	3219.50	4198.25	1516.64	1744302.68	14610024.67	40°13'41.2707"N	80°37'40.0976"W	4463.80	19.863	0.83
9728.00	91.00	90.550	336.970	5747.01	3310.48	4282.05	1481.18	1744267.23	14610108.43	40°13'42.1003"N	80°37'40.5503"W	4530.99	19.081	0.54
9820.00	92.00	90.650	336.450	5746.05	3402.47	4366.55	1444.80	1744230.87	14610192.90	40°13'42.9368"N	80°37'41.0147"W	4599.37	18.308	0.58
9910.00	90.00	91.200	336.570	5744.60	3492.46	4449.08	1408.94	1744195.02	14610275.40	40°13'43.7539"N	80°37'41.4727"W	4666.85	17.572	0.63
10001.00	91.00	91.230	337.300	5742.67	3583.42	4532.79	1373.29	1744159.39	14610359.07	40°13'44.5825"N	80°37'41.9277"W	4736.26	16.855	0.80
10092.00	91.00	90.520	336.230	5741.28	3674.40	4616.40	1337.40	1744123.51	14610442.65	40°13'45.4102"N	80°37'42.3860"W	4806.22	16.157	1.41
10182.00	90.00	91.260	336.390	5739.88	3764.39	4698.80	1301.24	1744087.36	14610525.02	40°13'46.2260"N	80°37'42.8477"W	4875.65	15.479	0.84
10275.00	93.00	90.650	336.450	5738.33	3857.37	4784.03	1264.04	1744050.18	14610610.21	40°13'47.0697"N	80°37'43.3227"W	4948.20	14.801	0.66
10366.00	91.00	90.990	336.780	5737.03	3948.36	4867.54	1227.93	1744014.08	14610693.69	40°13'47.8965"N	80°37'43.7838"W	5020.04	14.159	0.52
10457.00	91.00	91.020	336.890	5735.43	4039.34	4951.19	1192.14	1743978.30	14610777.31	40°13'48.7246"N	80°37'44.2407"W	5092.69	13.538	0.13
10547.00	90.00	91.690	335.380	5733.30	4129.31	5033.47	1155.74	1743941.91	14610859.56	40°13'49.5392"N	80°37'44.7056"W	5164.45	12.932	1.84
10639.00	92.00	90.860	333.830	5731.26	4221.25	5116.56	1116.29	1743902.49	14610942.61	40°13'50.3619"N	80°37'45.2097"W	5236.91	12.308	1.91



Actual Wellpath Report

Brian Teslovich BRK 405H awp 100' - 19436' Proj: 19461'
Page 6 of 10



REFERENCE WELLPATH IDENTIFICATION			
Operator	SWN PRODUCTION COMPANY, LLC	Well	Brian Teslovich BRK 405H
Field	Brooke	API	47009003130000
Facility	Brian Teslovich BRK Pad	Wellbore	Brian Teslovich BRK 405H AWB
Slot	Slot 405H		

WELLPATH DATA (218 stations)														
MD [ft]	Course Length [ft]	Inclination [°]	Azimuth [°]	TVD [ft]	Vert Sect [ft]	North [ft]	East [ft]	Grid East [US ft]	Grid North [US ft]	Latitude	Longitude	Closure Dist [ft]	Closure Dir [°]	DLS [°/100ft]
10731.00	92.00	90.830	334.000	5729.90	4313.18	5199.18	1075.84	1743862.05	14611025.20	40°13'51.1800"N	80°37'45.7267"W	5309.32	11.691	0.19
10823.00	92.00	90.890	334.170	5728.52	4405.12	5281.92	1035.64	1743821.87	14611107.91	40°13'51.9992"N	80°37'46.2406"W	5382.49	11.093	0.20
10914.00	91.00	91.080	335.220	5726.95	4496.08	5364.17	996.75	1743782.99	14611190.13	40°13'52.8137"N	80°37'46.7376"W	5455.99	10.526	1.17
11005.00	91.00	90.650	336.640	5725.58	4587.07	5447.25	959.64	1743745.90	14611273.17	40°13'53.6361"N	80°37'47.2116"W	5531.13	9.991	1.63
11096.00	91.00	90.770	336.650	5724.45	4678.05	5530.79	923.57	1743709.84	14611356.68	40°13'54.4631"N	80°37'47.6722"W	5607.37	9.480	0.13
11187.00	91.00	90.590	337.020	5723.37	4769.04	5614.44	887.77	1743674.06	14611440.30	40°13'55.2913"N	80°37'48.1292"W	5684.20	8.985	0.45
11278.00	91.00	90.460	336.980	5722.54	4860.02	5698.21	852.22	1743638.52	14611524.03	40°13'56.1205"N	80°37'48.5831"W	5761.58	8.506	0.15
11369.00	91.00	90.710	336.480	5721.61	4951.01	5781.80	816.27	1743602.58	14611607.59	40°13'56.9480"N	80°37'49.0421"W	5839.13	8.036	0.61
11460.00	91.00	90.800	336.850	5720.41	5042.00	5865.35	780.23	1743566.55	14611691.11	40°13'57.7751"N	80°37'49.5023"W	5917.01	7.577	0.42
11550.00	90.00	91.020	336.910	5718.98	5131.97	5948.11	744.89	1743531.23	14611773.84	40°13'58.5944"N	80°37'49.9535"W	5994.57	7.138	0.25
11641.00	91.00	91.110	336.930	5717.29	5222.95	6031.81	709.23	1743495.58	14611857.51	40°13'59.4230"N	80°37'50.4089"W	6073.36	6.706	0.10
11733.00	92.00	90.770	336.870	5715.78	5314.92	6116.42	673.14	1743459.50	14611942.09	40°14'0.2606"N	80°37'50.8696"W	6153.35	6.280	0.38
11824.00	91.00	90.920	336.860	5714.44	5405.90	6200.09	637.39	1743423.77	14612025.73	40°14'1.0889"N	80°37'51.3261"W	6232.77	5.870	0.17
11916.00	92.00	90.980	336.970	5712.91	5497.88	6284.72	601.32	1743387.71	14612110.32	40°14'1.9266"N	80°37'51.7866"W	6313.42	5.465	0.14
12006.00	90.00	90.740	337.100	5711.56	5587.86	6367.57	566.21	1743352.62	14612193.14	40°14'2.7468"N	80°37'52.2349"W	6392.70	5.081	0.30
12097.00	91.00	90.830	337.030	5710.32	5678.83	6451.37	530.75	1743317.17	14612276.91	40°14'3.5764"N	80°37'52.6876"W	6473.17	4.703	0.13
12189.00	92.00	90.800	337.080	5709.01	5770.81	6536.08	494.89	1743281.32	14612361.59	40°14'4.4150"N	80°37'53.1454"W	6554.79	4.330	0.06
12279.00	90.00	90.920	336.900	5707.66	5860.78	6618.91	459.71	1743246.16	14612444.38	40°14'5.2349"N	80°37'53.5945"W	6634.86	3.973	0.24
12370.00	91.00	90.770	336.680	5706.31	5951.77	6702.54	423.85	1743210.31	14612527.98	40°14'6.0628"N	80°37'54.0524"W	6715.93	3.618	0.29
12462.00	92.00	90.920	337.310	5704.96	6043.74	6787.21	387.90	1743174.38	14612612.62	40°14'6.9010"N	80°37'54.5114"W	6798.99	3.271	0.70
12552.00	90.00	90.830	337.310	5703.58	6133.71	6870.24	353.19	1743139.68	14612695.61	40°14'7.7228"N	80°37'54.9546"W	6879.31	2.943	0.10
12644.00	92.00	90.950	337.030	5702.15	6225.68	6955.02	317.50	1743104.00	14612780.36	40°14'8.5621"N	80°37'55.4102"W	6962.26	2.614	0.33
12736.00	92.00	90.620	336.180	5700.89	6317.66	7039.45	280.97	1743067.49	14612864.75	40°14'9.3979"N	80°37'55.8767"W	7045.05	2.286	0.99
12827.00	91.00	90.770	335.920	5699.79	6408.66	7122.61	244.03	1743030.57	14612947.88	40°14'10.2212"N	80°37'56.3485"W	7126.79	1.962	0.33
12918.00	91.00	90.650	336.520	5698.66	6499.65	7205.87	207.34	1742993.89	14613031.11	40°14'11.0455"N	80°37'56.8172"W	7208.86	1.648	0.67
13009.00	91.00	90.680	336.670	5697.61	6590.64	7289.38	171.20	1742957.76	14613114.59	40°14'11.8722"N	80°37'57.2788"W	7291.39	1.345	0.17
13101.00	92.00	91.080	336.460	5696.19	6682.62	7373.78	134.61	1742921.19	14613198.96	40°14'12.7077"N	80°37'57.7460"W	7375.01	1.046	0.49
13192.00	91.00	90.550	336.130	5694.90	6773.61	7457.10	98.03	1742884.62	14613282.24	40°14'13.5325"N	80°37'58.2132"W	7457.74	0.753	0.69
13282.00	90.00	90.740	336.550	5693.89	6863.61	7539.53	61.91	1742848.52	14613364.63	40°14'14.3485"N	80°37'58.6745"W	7539.78	0.471	0.51
13373.00	91.00	90.430	336.630	5692.96	6954.60	7623.03	25.76	1742812.38	14613448.11	40°14'15.1752"N	80°37'59.1362"W	7623.07	0.194	0.35



Actual Wellpath Report

Brian Teslovich BRK 405H awp 100' - 19436' Proj: 19461'
Page 7 of 10



REFERENCE WELLPATH IDENTIFICATION			
Operator	SWN PRODUCTION COMPANY, LLC	Well	Brian Teslovich BRK 405H
Field	Brooke	API	47009003130000
Facility	Brian Teslovich BRK Pad	Wellbore	Brian Teslovich BRK 405H AWB
Slot	Slot 405H		

WELLPATH DATA (218 stations)														
MD [ft]	Course Length [ft]	Inclination [°]	Azimuth [°]	TVD [ft]	Vert Sect [ft]	North [ft]	East [ft]	Grid East [US ft]	Grid North [US ft]	Latitude	Longitude	Closure Dist [ft]	Closure Dir [°]	DLS [°/100ft]
13463.00	90.00	90.890	335.250	5691.92	7044.59	7705.20	-10.93	1742775.71	14613530.25	40°14'15.9887"N	80°37'59.6049"W	7705.21	359.919	1.62
13555.00	92.00	90.710	335.140	5690.64	7136.57	7788.71	-49.52	1742737.13	14613613.72	40°14'16.8155"N	80°38'0.0981"W	7788.86	359.636	0.23
13646.00	91.00	90.250	335.230	5689.87	7227.56	7871.30	-87.71	1742698.95	14613696.28	40°14'17.6332"N	80°38'0.5861"W	7871.79	359.362	0.52
13738.00	92.00	90.680	335.260	5689.13	7319.54	7954.84	-126.23	1742660.45	14613779.79	40°14'18.4604"N	80°38'1.0784"W	7955.85	359.091	0.47
13829.00	91.00	90.550	335.410	5688.15	7410.53	8037.54	-164.21	1742622.49	14613862.45	40°14'19.2791"N	80°38'1.5637"W	8039.21	358.830	0.22
13919.00	90.00	90.620	335.340	5687.23	7500.52	8119.35	-201.71	1742585.00	14613944.23	40°14'20.0890"N	80°38'2.0428"W	8121.85	358.577	0.11
14011.00	92.00	90.580	335.090	5686.27	7592.51	8202.87	-240.27	1742546.45	14614027.72	40°14'20.9159"N	80°38'2.5357"W	8206.39	358.322	0.28
14100.00	89.00	90.800	335.020	5685.20	7681.49	8283.56	-277.80	1742508.93	14614108.38	40°14'21.7148"N	80°38'3.0154"W	8288.22	358.079	0.26
14190.00	90.00	90.800	334.930	5683.94	7771.47	8365.10	-315.87	1742470.88	14614189.89	40°14'22.5222"N	80°38'3.5019"W	8371.07	357.838	0.10
14281.00	91.00	90.830	335.590	5682.64	7862.45	8447.74	-353.95	1742432.82	14614272.50	40°14'23.3404"N	80°38'3.9885"W	8455.15	357.601	0.73
14371.00	90.00	90.710	335.430	5681.44	7952.44	8529.64	-391.26	1742395.53	14614354.36	40°14'24.1512"N	80°38'4.4652"W	8538.61	357.374	0.22
14462.00	91.00	90.400	335.390	5680.55	8043.43	8612.38	-429.12	1742357.68	14614437.07	40°14'24.9704"N	80°38'4.9491"W	8623.07	357.148	0.34
14554.00	92.00	90.860	335.230	5679.54	8135.41	8695.97	-467.55	1742319.26	14614520.62	40°14'25.7979"N	80°38'5.4402"W	8708.53	356.922	0.53
14646.00	92.00	90.490	334.880	5678.46	8227.39	8779.38	-506.35	1742280.48	14614604.00	40°14'26.6237"N	80°38'5.9360"W	8793.97	356.699	0.55
14737.00	91.00	90.460	335.380	5677.70	8318.38	8861.93	-544.62	1742242.23	14614686.53	40°14'27.4411"N	80°38'6.4251"W	8878.65	356.483	0.55
14830.00	93.00	90.340	335.200	5677.05	8411.37	8946.42	-583.49	1742203.37	14614770.98	40°14'28.2775"N	80°38'6.9219"W	8965.42	356.268	0.23
14920.00	90.00	90.460	335.010	5676.43	8501.36	9028.05	-621.38	1742165.50	14614852.58	40°14'29.0858"N	80°38'7.4061"W	9049.41	356.063	0.25
15012.00	92.00	90.340	335.110	5675.78	8593.34	9111.47	-660.17	1742126.72	14614935.97	40°14'29.9117"N	80°38'7.9020"W	9135.36	355.856	0.17
15104.00	92.00	90.400	335.280	5675.19	8685.33	9194.98	-698.76	1742088.14	14615019.45	40°14'30.7385"N	80°38'8.3952"W	9221.49	355.654	0.20
15195.00	91.00	90.430	335.410	5674.53	8776.32	9277.68	-736.72	1742050.19	14615102.12	40°14'31.5573"N	80°38'8.8804"W	9306.89	355.460	0.15
15286.00	91.00	90.460	335.190	5673.82	8867.31	9360.36	-774.75	1742012.18	14615184.75	40°14'32.3758"N	80°38'9.3663"W	9392.36	355.268	0.24
15376.00	90.00	90.310	335.330	5673.22	8957.30	9442.09	-812.41	1741974.53	14615266.46	40°14'33.1850"N	80°38'9.8477"W	9476.98	355.082	0.23
15469.00	93.00	90.460	335.390	5672.59	9050.29	9526.62	-851.19	1741935.78	14615350.96	40°14'34.0219"N	80°38'10.3432"W	9564.57	354.894	0.17
15560.00	91.00	90.220	335.660	5672.05	9141.29	9609.44	-888.89	1741898.09	14615433.75	40°14'34.8418"N	80°38'10.8250"W	9650.47	354.715	0.40
15650.00	90.00	90.280	334.850	5671.66	9231.28	9691.18	-926.56	1741860.43	14615515.45	40°14'35.6511"N	80°38'11.3064"W	9735.37	354.539	0.90
15741.00	91.00	90.490	335.360	5671.05	9322.26	9773.72	-964.86	1741822.14	14615597.96	40°14'36.4683"N	80°38'11.7960"W	9821.23	354.362	0.61
15832.00	91.00	90.220	335.300	5670.49	9413.25	9856.41	-1002.85	1741784.18	14615680.62	40°14'37.2870"N	80°38'12.2815"W	9907.30	354.190	0.30
15924.00	92.00	90.460	335.660	5669.94	9505.25	9940.11	-1041.03	1741746.01	14615764.29	40°14'38.1156"N	80°38'12.7694"W	9994.48	354.021	0.47
16015.00	91.00	91.170	335.470	5668.65	9596.24	10022.96	-1078.67	1741708.39	14615847.10	40°14'38.9358"N	80°38'13.2504"W	10080.83	353.858	0.81
16105.00	90.00	90.310	335.300	5667.48	9686.22	10104.77	-1116.15	1741670.92	14615928.88	40°14'39.7457"N	80°38'13.7295"W	10166.23	353.697	0.97



Actual Wellpath Report

Brian Teslovich BRK 405H awp 100' - 19436' Proj: 19461'
Page 8 of 10



REFERENCE WELLPATH IDENTIFICATION			
Operator	SWN PRODUCTION COMPANY, LLC	Well	Brian Teslovich BRK 405H
Field	Brooke	API	47009003130000
Facility	Brian Teslovich BRK Pad	Wellbore	Brian Teslovich BRK 405H AWB
Slot	Slot 405H		

WELLPATH DATA (218 stations)														
MD [ft]	Course Length [ft]	Inclination [°]	Azimuth [°]	TVD [ft]	Vert Sect [ft]	North [ft]	East [ft]	Grid East [US ft]	Grid North [US ft]	Latitude	Longitude	Closure Dist [ft]	Closure Dir [°]	DLS ["/100ft]
16197.00	92.00	90.370	334.990	5666.94	9778.21	10188.25	-1154.82	1741632.26	14616012.32	40°14'40.5722"N	80°38'14.2237"W	10253.49	353.533	0.34
16288.00	91.00	90.310	335.160	5666.40	9869.20	10270.77	-1193.17	1741593.93	14616094.81	40°14'41.3892"N	80°38'14.7139"W	10339.84	353.374	0.20
16379.00	91.00	90.460	335.270	5665.79	9960.18	10353.38	-1231.31	1741555.80	14616177.40	40°14'42.2072"N	80°38'15.2015"W	10426.35	353.218	0.20
16470.00	91.00	90.310	335.360	5665.18	10051.18	10436.07	-1269.32	1741517.81	14616260.05	40°14'43.0258"N	80°38'15.6872"W	10512.98	353.065	0.19
16561.00	91.00	90.400	335.230	5664.61	10142.17	10518.74	-1307.35	1741479.79	14616342.68	40°14'43.8442"N	80°38'16.1733"W	10599.67	352.915	0.17
16652.00	91.00	90.370	335.280	5664.00	10233.16	10601.38	-1345.44	1741441.71	14616425.29	40°14'44.6624"N	80°38'16.6602"W	10686.41	352.767	0.06
16743.00	91.00	90.310	336.010	5663.46	10324.15	10684.28	-1382.97	1741404.20	14616508.16	40°14'45.4831"N	80°38'17.1397"W	10773.41	352.625	0.80
16833.00	90.00	90.520	335.460	5662.81	10414.15	10766.32	-1419.95	1741367.23	14616590.18	40°14'46.2954"N	80°38'17.6124"W	10859.56	352.487	0.65
16925.00	92.00	90.620	335.030	5661.89	10506.14	10849.87	-1458.47	1741328.73	14616673.68	40°14'47.1225"N	80°38'18.1048"W	10947.45	352.344	0.48
17017.00	92.00	90.650	335.480	5660.87	10598.12	10933.41	-1496.98	1741290.23	14616757.20	40°14'47.9496"N	80°38'18.5970"W	11035.42	352.204	0.49
17107.00	90.00	90.550	335.150	5659.93	10688.11	11015.18	-1534.57	1741252.66	14616838.94	40°14'48.7592"N	80°38'19.0774"W	11121.56	352.069	0.38
17199.00	92.00	90.520	335.480	5659.07	10780.10	11098.77	-1572.99	1741214.26	14616922.49	40°14'49.5868"N	80°38'19.5684"W	11209.69	351.933	0.36
17291.00	92.00	90.400	334.670	5658.33	10872.08	11182.20	-1611.76	1741175.50	14617005.89	40°14'50.4127"N	80°38'20.0640"W	11297.76	351.798	0.89
17381.00	90.00	90.550	336.210	5657.59	10962.07	11264.05	-1649.16	1741138.11	14617087.71	40°14'51.2231"N	80°38'20.5421"W	11384.14	351.671	1.72
17472.00	91.00	90.620	336.520	5656.66	11053.07	11347.42	-1685.64	1741101.65	14617171.04	40°14'52.0483"N	80°38'21.0082"W	11471.93	351.551	0.35
17563.00	91.00	90.620	336.010	5655.67	11144.06	11430.71	-1722.27	1741065.03	14617254.31	40°14'52.8729"N	80°38'21.4762"W	11559.73	351.432	0.56
17653.00	90.00	90.620	336.220	5654.70	11234.05	11513.00	-1758.71	1741028.61	14617336.56	40°14'53.6875"N	80°38'21.9418"W	11646.55	351.315	0.23
17745.00	92.00	90.490	336.220	5653.81	11326.05	11597.19	-1795.80	1740991.53	14617420.71	40°14'54.5209"N	80°38'22.4158"W	11735.40	351.198	0.14
17837.00	92.00	90.710	336.650	5652.84	11418.04	11681.51	-1832.58	1740954.76	14617505.00	40°14'55.3557"N	80°38'22.8857"W	11824.38	351.084	0.52
17927.00	90.00	90.680	336.490	5651.75	11508.03	11764.08	-1868.36	1740918.99	14617587.54	40°14'56.1731"N	80°38'23.3428"W	11911.52	350.976	0.18
18018.00	91.00	90.770	336.110	5650.60	11599.02	11847.40	-1904.94	1740882.43	14617670.83	40°14'56.9979"N	80°38'23.8102"W	11999.57	350.866	0.43
18108.00	90.00	90.950	336.510	5649.25	11689.01	11929.81	-1941.10	1740846.29	14617753.20	40°14'57.8137"N	80°38'24.2721"W	12086.69	350.758	0.49
18200.00	92.00	90.120	336.360	5648.39	11781.00	12014.13	-1977.87	1740809.53	14617837.49	40°14'58.6484"N	80°38'24.7420"W	12175.85	350.651	0.92
18290.00	90.00	90.180	336.450	5648.16	11871.00	12096.61	-2013.90	1740773.52	14617919.94	40°14'59.4649"N	80°38'25.2023"W	12263.10	350.548	0.12
18381.00	91.00	90.120	336.330	5647.92	11962.00	12179.99	-2050.34	1740737.09	14618003.29	40°15'0.2903"N	80°38'25.6680"W	12351.36	350.445	0.15
18473.00	92.00	90.400	335.710	5647.50	12054.00	12264.05	-2087.73	1740699.71	14618087.31	40°15'1.1224"N	80°38'26.1458"W	12440.48	350.339	0.74
18563.00	90.00	90.220	336.460	5647.01	12143.99	12346.32	-2124.22	1740663.24	14618169.55	40°15'1.9369"N	80°38'26.6120"W	12527.72	350.238	0.86
18654.00	91.00	90.340	336.330	5646.57	12234.99	12429.70	-2160.66	1740626.82	14618252.90	40°15'2.7623"N	80°38'27.0776"W	12616.10	350.139	0.19
18745.00	91.00	91.140	336.980	5645.39	12325.98	12513.24	-2196.71	1740590.77	14618336.41	40°15'3.5893"N	80°38'27.5383"W	12704.60	350.043	1.13
18836.00	91.00	90.710	336.780	5643.92	12416.95	12596.92	-2232.44	1740555.06	14618420.06	40°15'4.4177"N	80°38'27.9947"W	12793.21	349.950	0.52



Actual Wellpath Report

Brian Teslovich BRK 405H awp 100' - 19436' Proj: 19461'
Page 9 of 10



REFERENCE WELLPATH IDENTIFICATION			
Operator	SWN PRODUCTION COMPANY, LLC	Well	Brian Teslovich BRK 405H
Field	Brooke	API	47009003130000
Facility	Brian Teslovich BRK Pad	Wellbore	Brian Teslovich BRK 405H AWB
Slot	Slot 405H		

WELLPATH DATA (218 stations) † = interpolated, ‡ = extrapolated station														
MD [ft]	Course Length [ft]	Inclination [°]	Azimuth [°]	TVD [ft]	Vert Sect [ft]	North [ft]	East [ft]	Grid East [US ft]	Grid North [US ft]	Latitude	Longitude	Closure Dist [ft]	Closure Dir [°]	DLS [°/100ft]
18926.00	90.00	90.550	336.330	5642.93	12506.94	12679.49	-2268.25	1740519.27	14618502.59	40°15'5.2350"N	80°38'28.4521"W	12880.78	349.858	0.53
19017.00	91.00	90.740	336.380	5641.91	12597.94	12762.84	-2304.74	1740482.79	14618585.92	40°15'6.0602"N	80°38'28.9185"W	12969.27	349.764	0.22
19108.00	91.00	90.680	336.550	5640.78	12688.93	12846.27	-2341.08	1740446.47	14618669.31	40°15'6.8860"N	80°38'29.3827"W	13057.84	349.672	0.20
19198.00	90.00	90.650	336.680	5639.74	12778.92	12928.87	-2376.79	1740410.76	14618751.88	40°15'7.7037"N	80°38'29.8391"W	13145.53	349.583	0.15
19290.00	92.00	90.620	336.310	5638.72	12870.91	13013.23	-2413.48	1740374.09	14618836.21	40°15'8.5388"N	80°38'30.3079"W	13235.15	349.493	0.40
19381.00	91.00	90.580	336.360	5637.77	12961.90	13096.57	-2450.01	1740337.58	14618919.52	40°15'9.3638"N	80°38'30.7746"W	13323.77	349.404	0.07
19436.00	55.00	90.610	336.210	5637.19	13016.90	13146.93	-2472.13	1740315.47	14618969.85	40°15'9.8623"N	80°38'31.0573"W	13377.34	349.351	0.28
19461.00‡	25.00	90.610	336.210	5636.93	13041.90	13169.80	-2482.21	1740305.39	14618992.72	40°15'10.0887"N	80°38'31.1861"W	13401.68	349.326	0.00

HOLE & CASING SECTIONS									
- Ref Wellbore: Brian Teslovich BRK 405H AWB Ref Wellpath: Brian Teslovich BRK 405H awp 100' - 19436' Proj: 19461'									
String/Diameter	Start MD [ft]	End MD [ft]	Interval [ft]	Start TVD [ft]	End TVD [ft]	Start N/S [ft]	Start E/W [ft]	End N/S [ft]	End E/W [ft]
13.375in Casing	26.00	320.00	294.00	26.00	320.00	0.00	0.00	0.31	-1.00
9.625in Casing	26.00	1627.00	1601.00	26.00	1608.14	0.00	0.00	13.11	174.19
5.5in Casing	26.00	19472.00	19446.00	26.00	N/A	0.00	0.00	N/A	N/A

TARGETS								
Name	TVD [ft]	North [ft]	East [ft]	Grid East [US ft]	Grid North [US ft]	Latitude	Longitude	Shape
Brian Teslovich BRK 405H BHL Rev 2	5643.00	13184.13	-2483.40	1740304.20	14619007.04	40°15'10.2304"N	80°38'31.2007"W	point
Brian Teslovich BRK 405H LP Rev 3	5775.00	1906.52	2533.71	1745319.35	14607733.83	40°13'18.5818"N	80°37'27.1102"W	point



Actual Wellpath Report

Brian Teslovich BRK 405H awp 100' - 19436' Proj: 19461'
Page 10 of 10



REFERENCE WELLPATH IDENTIFICATION

Operator	SWN PRODUCTION COMPANY, LLC	Well	Brian Teslovich BRK 405H
Field	Brooke	API	47009003130000
Facility	Brian Teslovich BRK Pad	Wellbore	Brian Teslovich BRK 405H AWB
Slot	Slot 405H		

WELLPATH COMPOSITION - Ref Wellbore: Brian Teslovich BRK 405H AWB Ref Wellpath: Brian Teslovich BRK 405H awp 100' - 19436' Proj: 19461'

Start MD [ft]	End MD [ft]	Positional Uncertainty Model	Log Name/Comment	Wellbore	Survey Date
26.00	300.00	OWSG MWD rev2 + HRGM	1 Tally MWD 100-300'	Brian Teslovich BRK 405H AWB	10/12/2021
300.00	1573.00	OWSG MWD rev2 + HRGM	2 Tally MWD 335' - 1573'	Brian Teslovich BRK 405H AWB	10/12/2021
1573.00	5078.00	OWSG MWD rev2 + HRGM	3 Tally MWD 1642' - 5078'	Brian Teslovich BRK 405H AWB	10/12/2021
5078.00	19461.00	BH AutoTrak Curve/eXpress (2019) (HRGM, Short spacing)	4 BH MWD 5181' - 19436	Brian Teslovich BRK 405H AWB	10/12/2021