

SWN PRODUCTION COMPANY, LLC

Location: Brooke County, WV

Slot: Slot #205

Field: Brooke

Well: OV Royalty Trust LLC BRK 205H

Facility: OV Royalty Trust LLC Pad

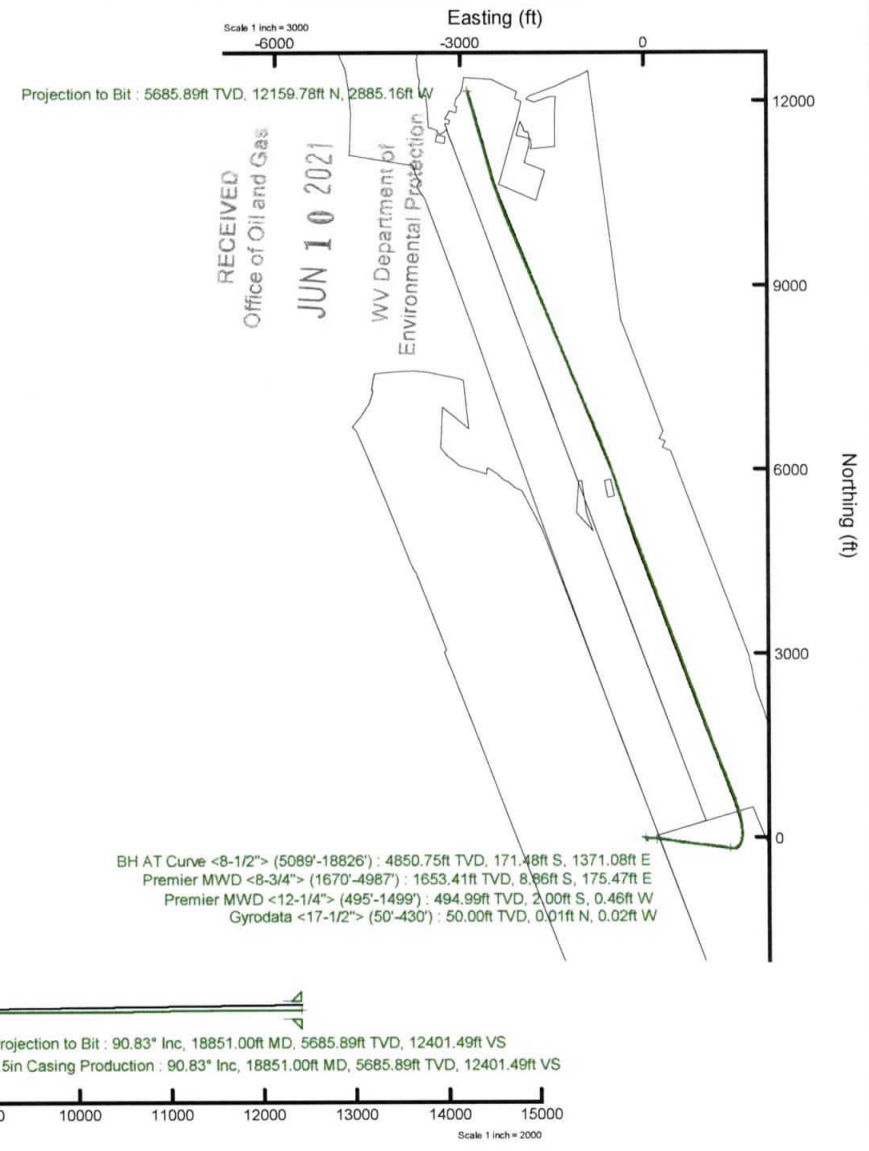
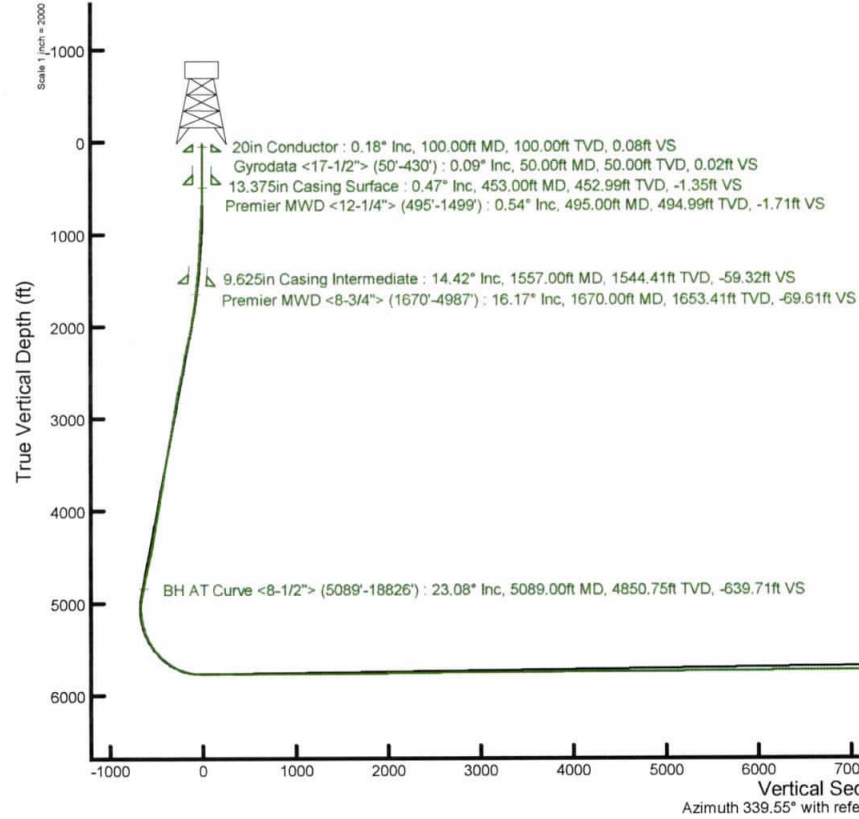
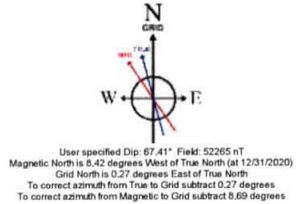
Wellbore: OV Royalty Trust LLC BRK 205H PWB



Plot reference wellpath is OV Royalty Trust LLC BRK 205H PWB Rev-A.0	Grid System: NAD83 / UTM Zone 17 North, US feet
True vertical depths are referenced to SDC 41 (RKB)	North Reference: Grid north
Reference wellpath measured depths are referenced to SDC 41 (RKB)	Scale: True distance
SDC 41 (RKB) to Mean Sea Level: 1206.8 feet	Coordinates are in feet referenced to Slot
Mean Sea Level to Ground level (At Slot: Slot #205): -1160.8 feet	Depths are in feet
Offset wellpath MDs are referenced to each path's default MD datum	Created by: atjen on 2021-01-21; Database: WA_MPL_EASTERIUS_Defn

Location Information						
Facility Name		Grid East (US ft)	Grid North (US ft)	Latitude	Longitude	
OV Royalty Trust LLC Pad		1756330.520	14631069.400	40°17'8.7828"N	80°35'3.6961"W	
Slot	Local N (ft)	Local E (ft)	Grid East (US ft)	Grid North (US ft)	Latitude	Longitude
Slot #205	-33.73	44.47	1756374.970	14631035.680	40°17'8.4474"N	80°35'3.1243"W
SDC 41 (RKB) to Ground level (At Slot: Slot #205)				26ft		
Mean Sea Level to Ground level (At Slot: Slot #205)				-1180.8ft		
SDC 41 (RKB) to Mean Sea Level				1206.8ft		

API: 47-009-00305-0000
 BH Job #: 110685721
 Rig: SDC 41
 Duration: 01/18/2021 - 01/21/2021





Actual Wellpath Report

OV Royalty Trust LLC BRK 205H AWP Proj: 18851'
Page 1 of 11

RECEIVED
Office of Oil and Gas

JUN 10 2021

WV Department of
Environmental Protection



REFERENCE WELLPATH IDENTIFICATION			
Operator	SWN PRODUCTION COMPANY, LLC	Well	OV Royalty Trust LLC BRK 205H
Field	Brooke	API/Legal	
Facility	OV Royalty Trust LLC Pad	Wellbore	OV Royalty Trust LLC BRK 205H AWB
Slot	Slot #205		

REPORT SETUP INFORMATION			
Projection System	NAD83 / UTM Zone 17 North, US feet	Software System	WellArchitect® 6.0
North Reference	Grid	User	Atenjen
Scale	0.999615	Report Generated	1/21/2021 at 1:37:24 PM
Convergence at slot	0.27° East	Database	WA_MPL_EASTERNUS_Defn

WELLPATH LOCATION						
	Local coordinates		Grid coordinates		Geographic coordinates	
	North[ft]	East[ft]	Easting[US ft]	Northing[US ft]	Latitude	Longitude
Slot Location	-33.73	44.47	1756374.97	14631035.68	40°17'8.4474"N	80°35'3.1243"W
Facility Reference Pt			1756330.52	14631069.40	40°17'8.7828"N	80°35'3.6961"W
Field Reference Pt			0.00	0.00	0°00'0.0000"	85°29'19.4780"W

WELLPATH DATUM			
Calculation method	Minimum curvature	SDC 41 (RKB) to Facility Vertical Datum	1206.80ft
Horizontal Reference Pt	Slot	SDC 41 (RKB) to Mean Sea Level	1206.80ft
Vertical Reference Pt	SDC 41 (RKB)	SDC 41 (RKB) to Ground Level at Slot (Slot #205)	26.00ft
MD Reference Pt	SDC 41 (RKB)	Section Origin	N 0.00, E 0.00 ft
Field Vertical Reference	Mean Sea Level	Section Azimuth	339.55°



Actual Wellpath Report

OV Royalty Trust LLC BRK 205H AWP Proj: 18851'
Page 2 of 11

RECEIVED
Office of Oil and Gas

JUN 10 2021

WV Department of
Environmental Protection



REFERENCE WELLPATH IDENTIFICATION

Operator	SWN PRODUCTION COMPANY, LLC	Well	OV Royalty Trust LLC BRK 205H
Field	Brooke	API/Legal	
Facility	OV Royalty Trust LLC Pad	Wellbore	OV Royalty Trust LLC BRK 205H AWB
Slot	Slot #205		

WELLPATH DATA (224 stations) † = interpolated, ‡ = extrapolated station

MD [ft]	Inclination [°]	Azimuth [°]	TVD [ft]	Vert Sect [ft]	North [ft]	East [ft]	Grid East [US ft]	Grid North [US ft]	Latitude	Longitude	Closure Dist [ft]	Closure Dir [°]	DLS [°/100ft]	Build Rate [°/100ft]	Turn Rate [°/100ft]
0.00†	0.000	302.540	0.00	0.00	0.00	0.00	1756374.97	14631035.68	40°17'8.4474"N	80°35'3.1243"W	0.00	0.000	0.00	0.00	0.00
26.00	0.000	302.540	26.00	0.00	0.00	0.00	1756374.97	14631035.68	40°17'8.4474"N	80°35'3.1243"W	0.00	0.000	0.00	0.00	0.00
50.00	0.090	302.540	50.00	0.02	0.01	-0.02	1756374.95	14631035.69	40°17'8.4475"N	80°35'3.1245"W	0.02	302.540	0.38	0.38	0.00
75.00	0.140	278.200	75.00	0.05	0.03	-0.06	1756374.91	14631035.71	40°17'8.4476"N	80°35'3.1251"W	0.07	291.791	0.28	0.20	-97.36
100.00	0.180	276.390	100.00	0.08	0.03	-0.13	1756374.84	14631035.71	40°17'8.4477"N	80°35'3.1260"W	0.14	284.363	0.16	0.16	-7.24
125.00	0.150	279.930	125.00	0.11	0.04	-0.20	1756374.77	14631035.72	40°17'8.4478"N	80°35'3.1269"W	0.21	282.164	0.13	-0.12	14.16
150.00	0.070	195.590	150.00	0.12	0.03	-0.24	1756374.73	14631035.71	40°17'8.4477"N	80°35'3.1274"W	0.24	278.250	0.64	-0.32	-337.36
175.00	0.210	226.780	175.00	0.09	-0.01	-0.28	1756374.69	14631035.67	40°17'8.4473"N	80°35'3.1279"W	0.28	267.653	0.62	0.56	124.76
200.00	0.290	188.960	200.00	0.01	-0.11	-0.32	1756374.65	14631035.57	40°17'8.4463"N	80°35'3.1285"W	0.34	251.812	0.72	0.32	-151.28
225.00	0.310	186.200	225.00	-0.10	-0.23	-0.34	1756374.63	14631035.45	40°17'8.4451"N	80°35'3.1287"W	0.41	235.149	0.10	0.08	-11.04
250.00	0.360	185.980	250.00	-0.23	-0.38	-0.35	1756374.62	14631035.30	40°17'8.4436"N	80°35'3.1289"W	0.52	222.860	0.20	0.20	-0.88
275.00	0.320	196.510	275.00	-0.36	-0.53	-0.38	1756374.59	14631035.15	40°17'8.4422"N	80°35'3.1293"W	0.65	215.946	0.30	-0.16	42.12
300.00	0.330	193.090	300.00	-0.47	-0.66	-0.42	1756374.55	14631035.02	40°17'8.4408"N	80°35'3.1297"W	0.78	212.196	0.09	0.04	-13.68
325.00	0.320	203.720	325.00	-0.59	-0.80	-0.46	1756374.51	14631034.88	40°17'8.4395"N	80°35'3.1303"W	0.92	210.088	0.24	-0.04	42.52
350.00	0.340	200.260	350.00	-0.69	-0.93	-0.52	1756374.45	14631034.75	40°17'8.4382"N	80°35'3.1310"W	1.06	208.988	0.11	0.08	-13.84
375.00	0.380	184.180	375.00	-0.82	-1.08	-0.55	1756374.42	14631034.60	40°17'8.4367"N	80°35'3.1314"W	1.21	206.812	0.43	0.16	-64.32
400.00	0.370	183.390	400.00	-0.97	-1.25	-0.56	1756374.41	14631034.44	40°17'8.4351"N	80°35'3.1316"W	1.36	204.125	0.05	-0.04	-3.16
425.00	0.440	179.180	425.00	-1.14	-1.42	-0.56	1756374.41	14631034.26	40°17'8.4333"N	80°35'3.1316"W	1.53	201.536	0.30	0.28	-16.84
430.00	0.440	178.690	430.00	-1.17	-1.46	-0.56	1756374.41	14631034.22	40°17'8.4330"N	80°35'3.1316"W	1.56	200.995	0.08	0.00	-9.80
495.00	0.540	162.680	494.99	-1.71	-2.00	-0.46	1756374.51	14631033.68	40°17'8.4276"N	80°35'3.1304"W	2.06	193.035	0.26	0.15	-24.63
583.00	1.740	111.600	582.98	-3.02	-2.89	0.90	1756375.87	14631032.79	40°17'8.4188"N	80°35'3.1128"W	3.03	162.664	1.66	1.36	-58.05
672.00	3.580	104.550	671.88	-5.52	-4.09	4.85	1756379.82	14631031.60	40°17'8.4068"N	80°35'3.0620"W	6.34	130.121	2.10	2.07	-7.92
761.00	5.500	99.660	760.59	-9.26	-5.50	11.74	1756386.71	14631030.18	40°17'8.3925"N	80°35'2.9731"W	12.97	115.095	2.20	2.16	-5.49
849.00	6.570	95.890	848.10	-13.61	-6.72	20.91	1756395.87	14631028.96	40°17'8.3799"N	80°35'2.8549"W	21.96	107.827	1.30	1.22	-4.28
938.00	7.260	94.000	936.46	-18.19	-7.64	31.58	1756406.54	14631028.04	40°17'8.3704"N	80°35'2.7172"W	32.49	103.596	0.82	0.78	-2.12
1027.00	8.130	90.520	1024.65	-22.77	-8.09	43.49	1756418.44	14631027.60	40°17'8.3654"N	80°35'2.5637"W	44.23	100.536	1.11	0.98	-3.91
1115.00	9.000	89.110	1111.67	-27.30	-8.04	56.59	1756431.54	14631027.65	40°17'8.3653"N	80°35'2.3946"W	57.16	98.084	1.02	0.99	-1.60
1203.00	9.760	88.420	1198.50	-32.02	-7.73	70.93	1756445.87	14631027.96	40°17'8.3677"N	80°35'2.2095"W	71.35	96.216	0.87	0.86	-0.78
1292.00	11.050	90.100	1286.03	-37.45	-7.53	87.00	1756461.94	14631028.15	40°17'8.3689"N	80°35'2.0022"W	87.33	94.948	1.49	1.45	1.89
1381.00	12.450	90.040	1373.16	-43.81	-7.55	105.12	1756480.05	14631028.13	40°17'8.3678"N	80°35'1.7683"W	105.40	94.110	1.57	1.57	-0.07



Actual Wellpath Report

OV Royalty Trust LLC BRK 205H AWP Proj: 18851'
Page 3 of 11

RECEIVED
 Office of Oil and Gas
 JUN 10 2021
 WV Department of
 Environmental Protection



REFERENCE WELLPATH IDENTIFICATION			
Operator	SWN PRODUCTION COMPANY, LLC	Well	OV Royalty Trust LLC BRK 205H
Field	Brooke	API/Legal	
Facility	OV Royalty Trust LLC Pad	Wellbore	OV Royalty Trust LLC BRK 205H AWB
Slot	Slot #205		

WELLPATH DATA (224 stations)															
MD [ft]	Inclination [°]	Azimuth [°]	TVD [ft]	Vert Sect [ft]	North [ft]	East [ft]	Grid East [US ft]	Grid North [US ft]	Latitude	Longitude	Closure Dist [ft]	Closure Dir [°]	DLS [°/100ft]	Build Rate [°/100ft]	Turn Rate [°/100ft]
1469.00	13.290	92.550	1458.95	-51.08	-8.01	124.72	1756499.64	14631027.67	40°17'8.3624"N	80°35'1.5155"W	124.97	93.675	1.15	0.95	2.85
1499.00	13.550	93.530	1488.13	-53.86	-8.38	131.67	1756506.59	14631027.30	40°17'8.3584"N	80°35'1.4259"W	131.93	93.642	1.15	0.87	3.27
1670.00	16.170	88.180	1653.41	-69.61	-8.86	175.47	1756550.37	14631026.83	40°17'8.3517"N	80°35'0.8607"W	175.69	92.890	1.73	1.53	-3.13
1760.00	18.000	91.450	1739.43	-78.80	-8.81	201.90	1756576.79	14631026.87	40°17'8.3509"N	80°35'0.5196"W	202.09	92.499	2.30	2.03	3.63
1850.00	18.810	95.150	1824.83	-90.25	-10.47	230.25	1756605.13	14631025.22	40°17'8.3333"N	80°35'0.1539"W	230.49	92.602	1.58	0.90	4.11
1938.00	19.870	96.560	1907.87	-103.18	-13.45	259.24	1756634.11	14631022.24	40°17'8.3024"N	80°34'59.7800"W	259.59	92.969	1.32	1.20	1.60
2028.00	19.590	98.670	1992.58	-117.47	-17.47	289.35	1756664.21	14631018.22	40°17'8.2613"N	80°34'59.3917"W	289.88	93.455	0.85	-0.31	2.34
2118.00	19.500	102.620	2077.40	-133.00	-23.03	318.93	1756693.77	14631012.66	40°17'8.2050"N	80°34'59.0105"W	319.76	94.129	1.47	-0.10	4.39
2207.00	21.830	101.920	2160.67	-149.97	-29.69	349.62	1756724.45	14631006.00	40°17'8.1377"N	80°34'58.6148"W	350.88	94.854	2.63	2.62	-0.79
2297.00	22.530	101.680	2244.01	-168.10	-36.64	382.88	1756757.70	14630999.06	40°17'8.0675"N	80°34'58.1861"W	384.63	95.466	0.78	0.78	-0.27
2387.00	22.170	100.810	2327.25	-186.08	-43.31	416.44	1756791.25	14630992.38	40°17'8.0000"N	80°34'57.7534"W	418.69	95.938	0.54	-0.40	-0.97
2476.00	21.280	99.500	2409.93	-202.86	-49.13	448.87	1756823.66	14630986.57	40°17'7.9410"N	80°34'57.3354"W	451.55	96.246	1.14	-1.00	-1.47
2564.00	20.280	98.510	2492.20	-218.22	-54.02	479.70	1756854.48	14630981.68	40°17'7.8913"N	80°34'56.9378"W	482.73	96.425	1.20	-1.14	-1.13
2652.00	20.490	100.250	2574.69	-233.47	-59.02	509.94	1756884.71	14630976.68	40°17'7.8405"N	80°34'56.5479"W	513.34	96.602	0.73	0.24	1.98
2741.00	20.700	102.420	2658.00	-249.96	-65.17	540.63	1756915.39	14630970.53	40°17'7.7782"N	80°34'56.1523"W	544.54	96.874	0.89	0.24	2.44
2830.00	21.670	100.400	2740.99	-266.92	-71.52	572.15	1756946.90	14630964.19	40°17'7.7140"N	80°34'55.7459"W	576.61	97.125	1.36	1.09	-2.27
2920.00	21.200	97.000	2824.77	-282.94	-76.51	604.65	1756979.39	14630959.20	40°17'7.6632"N	80°34'55.3269"W	609.47	97.211	1.48	-0.52	-3.78
3008.00	21.790	93.330	2906.65	-296.86	-79.39	636.75	1757011.47	14630956.32	40°17'7.6332"N	80°34'54.9129"W	641.68	97.107	1.67	0.67	-4.17
3100.00	20.420	92.260	2992.48	-309.95	-81.02	669.84	1757044.55	14630954.69	40°17'7.6156"N	80°34'54.4861"W	674.72	96.897	1.55	-1.49	-1.16
3189.00	19.890	93.600	3076.03	-322.11	-82.58	700.46	1757075.16	14630953.13	40°17'7.5987"N	80°34'54.0910"W	705.31	96.724	0.79	-0.60	1.51
3281.00	19.590	97.110	3162.62	-335.62	-85.47	731.38	1757106.07	14630950.24	40°17'7.5687"N	80°34'53.6921"W	736.36	96.666	1.33	-0.33	3.82
3369.00	20.330	99.140	3245.34	-350.00	-89.73	761.12	1757135.79	14630945.99	40°17'7.5253"N	80°34'53.3088"W	766.39	96.724	1.15	0.84	2.31
3460.00	20.600	100.090	3330.60	-365.94	-95.04	792.49	1757167.15	14630940.67	40°17'7.4713"N	80°34'52.9043"W	798.17	96.839	0.47	0.30	1.04
3551.00	21.080	98.060	3415.64	-381.89	-100.14	824.45	1757199.10	14630935.58	40°17'7.4194"N	80°34'52.4922"W	830.51	96.926	0.95	0.53	-2.23
3641.00	20.830	95.800	3499.69	-396.69	-104.03	856.40	1757231.04	14630931.69	40°17'7.3795"N	80°34'52.0802"W	862.69	96.926	0.94	-0.28	-2.51
3732.00	20.750	93.460	3584.77	-410.38	-106.64	888.59	1757263.21	14630929.08	40°17'7.3522"N	80°34'51.6650"W	894.96	96.843	0.92	-0.09	-2.57
3822.00	21.230	91.560	3668.80	-422.95	-108.04	920.79	1757295.40	14630927.68	40°17'7.3368"N	80°34'51.2496"W	927.11	96.692	0.93	0.53	-2.11
3913.00	19.640	94.970	3754.07	-435.69	-109.82	952.50	1757327.10	14630925.91	40°17'7.3178"N	80°34'50.8405"W	958.81	96.577	2.18	-1.75	3.75
4003.00	18.930	99.350	3839.02	-449.44	-113.50	981.97	1757356.56	14630922.23	40°17'7.2801"N	80°34'50.4604"W	988.51	96.593	1.79	-0.79	4.87
4094.00	18.810	100.550	3925.13	-464.33	-118.58	1010.96	1757385.54	14630917.14	40°17'7.2285"N	80°34'50.0867"W	1017.89	96.690	0.45	-0.13	1.32



Actual Wellpath Report

OV Royalty Trust LLC BRK 205H AWP Proj: 18851'
Page 4 of 11

RECEIVED
 Office of Oil and Gas
 JUN 10 2021
 WV Department of
 Environmental Protection



REFERENCE WELLPATH IDENTIFICATION			
Operator	SWN PRODUCTION COMPANY, LLC	Well	OV Royalty Trust LLC BRK 205H
Field	Brooke	API/Legal	
Facility	OV Royalty Trust LLC Pad	Wellbore	OV Royalty Trust LLC BRK 205H AWB
Slot	Slot #205		

WELLPATH DATA (224 stations)															
MD [ft]	Inclination [°]	Azimuth [°]	TVD [ft]	Vert Sect [ft]	North [ft]	East [ft]	Grid East [US ft]	Grid North [US ft]	Latitude	Longitude	Closure Dist [ft]	Closure Dir [°]	DLS [°/100ft]	Build Rate [°/100ft]	Turn Rate [°/100ft]
4184.00	19.690	99.540	4010.10	-479.38	-123.75	1040.18	1757414.74	14630911.98	40°17'7.1760"N	80°34'49.7100"W	1047.51	96.785	1.05	0.98	-1.12
4275.00	19.960	97.710	4095.71	-494.37	-128.38	1070.69	1757445.24	14630907.35	40°17'7.1289"N	80°34'49.3166"W	1078.36	96.837	0.74	0.30	-2.01
4365.00	20.320	95.380	4180.21	-508.43	-131.90	1101.47	1757476.01	14630903.83	40°17'7.0926"N	80°34'48.9197"W	1109.34	96.829	0.98	0.40	-2.59
4454.00	21.090	94.250	4263.46	-521.86	-134.54	1132.82	1757507.35	14630901.19	40°17'7.0651"N	80°34'48.5153"W	1140.78	96.773	0.97	0.87	-1.27
4544.00	21.340	95.210	4347.36	-535.71	-137.23	1165.28	1757539.80	14630898.51	40°17'7.0370"N	80°34'48.0966"W	1173.33	96.716	0.48	0.28	1.07
4633.00	22.320	97.560	4429.98	-550.66	-140.92	1198.16	1757572.67	14630894.81	40°17'6.9990"N	80°34'47.6726"W	1206.42	96.708	1.48	1.10	2.64
4721.00	22.460	100.550	4511.35	-567.17	-146.20	1231.25	1757605.75	14630889.54	40°17'6.9453"N	80°34'47.2459"W	1239.90	96.771	1.30	0.16	3.40
4809.00	22.150	102.440	4592.76	-584.84	-152.85	1263.98	1757638.46	14630882.89	40°17'6.8780"N	80°34'46.8240"W	1273.19	96.895	0.89	-0.35	2.15
4898.00	22.520	102.280	4675.09	-603.16	-160.09	1297.02	1757671.48	14630875.65	40°17'6.8049"N	80°34'46.3982"W	1306.86	97.036	0.42	0.42	-0.18
4987.00	23.420	98.900	4757.03	-621.05	-166.45	1331.15	1757705.60	14630869.30	40°17'6.7405"N	80°34'45.9582"W	1341.51	97.127	1.79	1.01	-3.80
5089.00	23.080	95.440	4850.75	-639.71	-171.48	1371.08	1757745.52	14630864.27	40°17'6.6889"N	80°34'45.4432"W	1381.76	97.129	1.38	-0.33	-3.39
5180.00	23.160	95.420	4934.44	-655.31	-174.86	1406.65	1757781.08	14630860.89	40°17'6.6538"N	80°34'44.9844"W	1417.48	97.086	0.09	0.09	-0.02
5270.00	20.680	76.730	5018.03	-665.03	-172.88	1439.78	1757814.19	14630862.86	40°17'6.6718"N	80°34'44.5568"W	1450.12	96.847	8.19	-2.76	-20.77
5361.00	20.460	62.070	5103.29	-664.97	-161.74	1469.49	1757843.89	14630874.00	40°17'6.7805"N	80°34'44.1727"W	1478.37	96.281	5.65	-0.24	-16.11
5452.00	22.490	45.360	5188.05	-655.76	-142.04	1495.96	1757870.35	14630893.70	40°17'6.9740"N	80°34'43.8301"W	1502.68	95.424	7.06	2.23	-18.36
5542.00	24.340	30.470	5270.70	-637.00	-113.93	1517.63	1757892.01	14630921.79	40°17'7.2507"N	80°34'43.5487"W	1521.90	94.293	6.87	2.06	-16.54
5633.00	29.050	23.350	5352.00	-609.20	-77.45	1535.91	1757910.29	14630958.26	40°17'7.6103"N	80°34'43.3105"W	1537.86	92.887	6.25	5.18	-7.82
5724.00	34.000	15.230	5429.58	-572.55	-32.57	1551.37	1757925.74	14631003.12	40°17'8.0531"N	80°34'43.1083"W	1551.71	91.203	7.16	5.44	-8.92
5814.00	39.130	5.060	5501.91	-526.41	20.08	1560.50	1757934.87	14631055.75	40°17'8.5729"N	80°34'42.9873"W	1560.63	89.263	8.81	5.70	-11.30
5904.00	44.970	358.460	5568.75	-470.61	80.24	1562.15	1757936.52	14631115.89	40°17'9.1674"N	80°34'42.9623"W	1564.21	87.060	8.13	6.49	-7.33
5995.00	51.000	354.920	5629.64	-406.03	147.68	1558.15	1757932.52	14631183.31	40°17'9.8340"N	80°34'43.0098"W	1565.13	84.586	7.23	6.63	-3.89
6088.00	57.710	352.510	5683.81	-332.78	222.74	1549.82	1757924.19	14631258.34	40°17'10.5761"N	80°34'43.1127"W	1565.74	81.821	7.52	7.22	-2.59
6180.00	67.590	349.540	5726.03	-252.79	303.33	1536.99	1757911.37	14631338.89	40°17'11.3731"N	80°34'43.2732"W	1566.64	78.836	11.11	10.74	-3.23
6227.00	72.530	346.950	5742.06	-209.14	346.57	1527.98	1757902.36	14631382.11	40°17'11.8007"N	80°34'43.3869"W	1566.79	77.221	11.72	10.51	-5.51
6273.00	76.650	345.640	5754.28	-165.11	389.64	1517.47	1757891.85	14631425.17	40°17'12.2268"N	80°34'43.5198"W	1566.70	75.599	9.37	8.96	-2.85
6366.00	84.110	343.820	5769.81	-73.86	478.02	1493.33	1757867.72	14631513.52	40°17'13.1014"N	80°34'43.8260"W	1567.97	72.250	8.25	8.02	-1.96
6459.00	90.710	340.850	5774.01	18.88	566.49	1465.15	1757839.55	14631601.95	40°17'13.9769"N	80°34'44.1842"W	1570.85	68.861	7.78	7.10	-3.19
6551.00	90.710	339.140	5772.87	110.86	652.93	1433.68	1757808.09	14631688.35	40°17'14.8325"N	80°34'44.5850"W	1575.35	65.514	1.86	0.00	-1.86
6644.00	90.310	339.180	5772.04	203.86	739.84	1400.59	1757775.02	14631775.23	40°17'15.6929"N	80°34'45.0065"W	1583.99	62.156	0.43	-0.43	0.04
6736.00	89.750	338.640	5772.00	295.85	825.67	1367.49	1757741.93	14631861.04	40°17'16.5427"N	80°34'45.4285"W	1597.42	58.877	0.85	-0.61	-0.59



Actual Wellpath Report

OV Royalty Trust LLC BRK 205H AWP Proj: 18851'
Page 5 of 11

RECEIVED
Office of Oil and Gas

JUN 10 2021

WV Department of
Environmental Protection



REFERENCE WELLPATH IDENTIFICATION			
Operator	SWN PRODUCTION COMPANY, LLC	Well	OV Royalty Trust LLC BRK 205H
Field	Brooke	API/Legal	
Facility	OV Royalty Trust LLC Pad	Wellbore	OV Royalty Trust LLC BRK 205H AWB
Slot	Slot #205		

WELLPATH DATA (224 stations)															
MD [ft]	Inclination [°]	Azimuth [°]	TVD [ft]	Vert Sect [ft]	North [ft]	East [ft]	Grid East [US ft]	Grid North [US ft]	Latitude	Longitude	Closure Dist [ft]	Closure Dir [°]	DLS [°/100ft]	Build Rate [°/100ft]	Turn Rate [°/100ft]
6829.00	89.820	339.080	5772.34	388.84	912.42	1333.95	1757708.40	14631947.74	40°17'17.4014"N	80°34'45.8559"W	1616.14	55.628	0.48	0.08	0.47
6922.00	90.150	338.650	5772.37	481.84	999.16	1300.41	1757674.88	14632034.45	40°17'18.2601"N	80°34'46.2833"W	1639.94	52.464	0.58	0.35	-0.46
7014.00	90.340	337.430	5771.98	573.80	1084.48	1266.01	1757640.49	14632119.74	40°17'19.1049"N	80°34'46.7220"W	1667.00	49.416	1.34	0.21	-1.33
7107.00	91.290	339.950	5770.65	666.77	1171.11	1232.22	1757606.71	14632206.33	40°17'19.9625"N	80°34'47.1528"W	1699.96	46.457	2.90	1.02	2.71
7199.00	88.980	338.540	5770.44	758.76	1257.13	1199.62	1757574.13	14632292.32	40°17'20.8140"N	80°34'47.5682"W	1737.66	43.659	2.94	-2.51	-1.53
7292.00	90.180	339.250	5771.12	851.75	1343.88	1166.14	1757540.65	14632379.05	40°17'21.6729"N	80°34'47.9950"W	1779.30	40.949	1.50	1.29	0.76
7385.00	90.370	339.560	5770.67	944.75	1430.94	1133.42	1757507.95	14632466.07	40°17'22.5347"N	80°34'48.4118"W	1825.44	38.382	0.39	0.20	0.33
7477.00	90.180	339.690	5770.23	1036.75	1517.18	1101.39	1757475.94	14632552.28	40°17'23.3884"N	80°34'48.8198"W	1874.81	35.978	0.25	-0.21	0.14
7570.00	90.280	339.510	5769.86	1129.75	1604.35	1068.98	1757443.53	14632639.41	40°17'24.2513"N	80°34'49.2328"W	1927.86	33.675	0.22	0.11	-0.19
7663.00	90.180	339.760	5769.48	1222.75	1691.54	1036.61	1757411.18	14632726.56	40°17'25.1144"N	80°34'49.6451"W	1983.90	31.501	0.29	-0.11	0.27
7754.00	90.580	339.470	5768.88	1313.75	1776.83	1004.91	1757379.50	14632811.83	40°17'25.9587"N	80°34'50.0489"W	2041.32	29.491	0.54	0.44	-0.32
7847.00	90.370	339.780	5768.11	1406.74	1864.01	972.54	1757347.13	14632898.97	40°17'26.8217"N	80°34'50.4614"W	2102.47	27.553	0.40	-0.23	0.33
7940.00	90.120	339.760	5767.71	1499.74	1951.27	940.38	1757314.98	14632986.20	40°17'27.6855"N	80°34'50.8711"W	2166.05	25.731	0.27	-0.27	-0.02
8029.00	90.430	340.130	5767.28	1588.74	2034.88	909.86	1757284.48	14633069.77	40°17'28.5131"N	80°34'51.2598"W	2229.03	24.091	0.54	0.35	0.42
8122.00	90.860	340.150	5766.24	1681.73	2122.34	878.27	1757252.90	14633157.20	40°17'29.3788"N	80°34'51.6622"W	2296.88	22.481	0.46	0.46	0.02
8213.00	89.970	340.470	5765.58	1772.72	2208.02	847.61	1757222.25	14633242.84	40°17'30.2269"N	80°34'52.0526"W	2365.12	21.001	1.04	-0.98	0.35
8306.00	89.750	339.180	5765.80	1865.71	2295.31	815.53	1757190.19	14633330.10	40°17'31.0910"N	80°34'52.4612"W	2435.88	19.560	1.41	-0.24	-1.39
8399.00	90.430	339.910	5765.66	1958.71	2382.44	783.03	1757157.70	14633417.20	40°17'31.9535"N	80°34'52.8753"W	2507.82	18.194	1.07	0.73	0.78
8492.00	90.310	339.830	5765.06	2051.71	2469.76	751.03	1757125.71	14633504.49	40°17'32.8179"N	80°34'53.2830"W	2581.43	16.914	0.16	-0.13	-0.09
8584.00	90.680	337.840	5764.26	2143.69	2555.55	717.81	1757092.51	14633590.24	40°17'33.6672"N	80°34'53.7063"W	2654.44	15.689	2.20	0.40	-2.16
8677.00	90.710	340.250	5763.13	2236.68	2642.38	684.56	1757059.26	14633677.04	40°17'34.5268"N	80°34'54.1302"W	2729.62	14.524	2.59	0.03	2.59
8766.00	90.650	340.410	5762.08	2325.66	2726.18	654.60	1757029.32	14633760.81	40°17'35.3563"N	80°34'54.5117"W	2803.67	13.502	0.19	-0.07	0.18
8858.00	90.920	339.880	5760.82	2417.65	2812.71	623.36	1756998.09	14633847.30	40°17'36.2127"N	80°34'54.9096"W	2880.95	12.496	0.65	0.29	-0.58
8949.00	90.770	340.400	5759.48	2508.63	2898.28	592.45	1756967.19	14633932.84	40°17'37.0598"N	80°34'55.3033"W	2958.22	11.553	0.59	-0.16	0.57
9038.00	90.550	340.080	5758.45	2597.62	2982.04	562.36	1756937.11	14634016.56	40°17'37.8889"N	80°34'55.6865"W	3034.60	10.680	0.44	-0.25	-0.36
9126.00	90.460	339.210	5757.68	2685.61	3064.54	531.75	1756906.52	14634099.03	40°17'38.7055"N	80°34'56.0764"W	3110.33	9.844	0.99	-0.10	-0.99
9215.00	90.000	339.810	5757.32	2774.61	3147.91	500.60	1756875.38	14634182.37	40°17'39.5308"N	80°34'56.4734"W	3187.46	9.036	0.85	-0.52	0.67
9304.00	90.030	339.520	5757.29	2863.61	3231.36	469.67	1756844.46	14634265.79	40°17'40.3569"N	80°34'56.8675"W	3265.31	8.270	0.33	0.03	-0.33
9394.00	90.220	337.340	5757.10	2953.59	3315.05	436.59	1756811.39	14634349.45	40°17'41.1855"N	80°34'57.2893"W	3343.68	7.503	2.43	0.21	-2.42
9483.00	90.710	339.660	5756.38	3042.57	3397.85	403.97	1756778.78	14634432.22	40°17'42.0052"N	80°34'57.7052"W	3421.78	6.780	2.66	0.55	2.61



Actual Wellpath Report

OV Royalty Trust LLC BRK 205H AWP Proj: 18851'
Page 6 of 11

RECEIVED
Office of Oil and Gas

JUN 10 2021

WV Department of
Environmental Protection



REFERENCE WELLPATH IDENTIFICATION			
Operator	SWN PRODUCTION COMPANY, LLC	Well	OV Royalty Trust LLC BRK 205H
Field	Brooke	API/Legal	
Facility	OV Royalty Trust LLC Pad	Wellbore	OV Royalty Trust LLC BRK 205H AWB
Slot	Slot #205		

WELLPATH DATA (224 stations)															
MD [ft]	Inclination [°]	Azimuth [°]	TVD [ft]	Vert Sect [ft]	North [ft]	East [ft]	Grid East [US ft]	Grid North [US ft]	Latitude	Longitude	Closure Dist [ft]	Closure Dir [°]	DLS [°/100ft]	Build Rate [°/100ft]	Turn Rate [°/100ft]
9571.00	90.460	339.770	5755.48	3130.56	3480.39	373.46	1756748.29	14634514.72	40°17'42.8222"N	80°34'58.0939"W	3500.37	6.125	0.31	-0.28	0.12
9660.00	90.620	339.880	5754.64	3219.56	3563.92	342.77	1756717.61	14634598.23	40°17'43.6491"N	80°34'58.4849"W	3580.37	5.494	0.22	0.18	0.12
9748.00	90.860	339.570	5753.50	3307.55	3646.46	312.28	1756687.13	14634680.73	40°17'44.4662"N	80°34'58.8734"W	3659.81	4.895	0.45	0.27	-0.35
9837.00	90.180	339.740	5752.69	3396.54	3729.91	281.34	1756656.20	14634764.15	40°17'45.2922"N	80°34'59.2677"W	3740.50	4.313	0.79	-0.76	0.19
9925.00	90.060	339.750	5752.51	3484.54	3812.47	250.87	1756625.74	14634846.67	40°17'46.1094"N	80°34'59.6558"W	3820.71	3.765	0.14	-0.14	0.01
10014.00	90.000	339.500	5752.46	3573.54	3895.90	219.88	1756594.77	14634930.07	40°17'46.9353"N	80°35'0.0506"W	3902.10	3.230	0.29	-0.07	-0.28
10102.00	90.000	339.880	5752.46	3661.54	3978.43	189.34	1756564.24	14635012.57	40°17'47.7522"N	80°35'0.4398"W	3982.93	2.725	0.43	0.00	0.43
10192.00	90.120	339.370	5752.37	3751.54	4062.79	158.01	1756532.91	14635096.90	40°17'48.5874"N	80°35'0.8391"W	4065.87	2.227	0.58	0.13	-0.57
10280.00	90.120	340.190	5752.18	3839.54	4145.37	127.59	1756502.51	14635179.45	40°17'49.4048"N	80°35'1.2266"W	4147.33	1.763	0.93	0.00	0.93
10369.00	90.090	339.060	5752.02	3928.54	4228.80	96.60	1756471.54	14635262.85	40°17'50.2307"N	80°35'1.6214"W	4229.90	1.309	1.27	-0.03	-1.27
10457.00	90.370	339.760	5751.67	4016.54	4311.18	65.66	1756440.60	14635345.19	40°17'51.0461"N	80°35'2.0158"W	4311.68	0.873	0.86	0.32	0.80
10546.00	90.490	340.160	5751.00	4105.53	4394.79	35.16	1756410.12	14635428.77	40°17'51.8738"N	80°35'2.4044"W	4394.93	0.458	0.47	0.13	0.45
10634.00	89.850	339.280	5750.74	4193.53	4477.33	4.66	1756379.63	14635511.28	40°17'52.6908"N	80°35'2.7930"W	4477.33	0.060	1.24	-0.73	-1.00
10722.00	89.880	339.490	5750.95	4281.53	4559.70	-26.32	1756348.66	14635593.61	40°17'53.5062"N	80°35'3.1879"W	4559.77	359.669	0.24	0.03	0.24
10815.00	90.030	339.420	5751.02	4374.53	4646.78	-58.96	1756316.03	14635680.66	40°17'54.3682"N	80°35'3.6038"W	4647.15	359.273	0.18	0.16	-0.08
10907.00	90.430	340.710	5750.65	4466.52	4733.26	-90.33	1756284.68	14635767.11	40°17'55.2243"N	80°35'4.0034"W	4734.13	358.907	1.47	0.43	1.40
10998.00	90.060	340.280	5750.26	4557.51	4819.04	-120.71	1756254.30	14635852.86	40°17'56.0733"N	80°35'4.3903"W	4820.55	358.565	0.62	-0.41	-0.47
11091.00	89.880	339.500	5750.31	4650.51	4906.37	-152.69	1756222.34	14635940.15	40°17'56.9378"N	80°35'4.7977"W	4908.75	358.218	0.86	-0.19	-0.84
11182.00	89.820	339.380	5750.55	4741.51	4991.57	-184.65	1756190.40	14636025.32	40°17'57.7812"N	80°35'5.2050"W	4994.99	357.882	0.15	-0.07	-0.13
11275.00	90.710	339.790	5750.12	4834.50	5078.73	-217.09	1756157.97	14636112.45	40°17'58.6440"N	80°35'5.6184"W	5083.37	357.552	1.05	0.96	0.44
11367.00	90.520	340.330	5749.13	4926.49	5165.21	-248.46	1756126.61	14636198.89	40°17'59.5000"N	80°35'6.0181"W	5171.18	357.246	0.62	-0.21	0.59
11457.00	90.370	339.430	5748.43	5016.49	5249.71	-279.42	1756095.66	14636283.36	40°18'0.3365"N	80°35'6.4125"W	5257.15	356.953	1.01	-0.17	-1.00
11549.00	91.540	340.410	5746.90	5108.47	5336.11	-311.00	1756064.09	14636369.72	40°18'1.1916"N	80°35'6.8149"W	5345.16	356.664	1.66	1.27	1.07
11639.00	90.310	340.440	5745.45	5198.45	5420.89	-341.15	1756033.96	14636454.48	40°18'2.0309"N	80°35'7.1989"W	5431.62	356.399	1.37	-1.37	0.03
11730.00	90.120	340.390	5745.10	5289.44	5506.63	-371.65	1756003.46	14636540.18	40°18'2.8795"N	80°35'7.5874"W	5519.16	356.139	0.22	-0.21	-0.05
11820.00	90.220	340.350	5744.84	5379.43	5591.40	-401.88	1755973.24	14636624.92	40°18'3.7185"N	80°35'7.9725"W	5605.82	355.889	0.12	0.11	-0.04
11909.00	90.400	341.410	5744.36	5468.40	5675.48	-431.04	1755944.10	14636708.97	40°18'4.5508"N	80°35'8.3437"W	5691.83	355.657	1.21	0.20	1.19
11999.00	90.310	342.260	5743.80	5558.33	5761.00	-459.09	1755916.05	14636794.45	40°18'5.3971"N	80°35'8.7006"W	5779.26	355.444	0.95	-0.10	0.94
12090.00	90.150	341.940	5743.43	5649.24	5847.59	-487.06	1755888.10	14636881.01	40°18'6.2541"N	80°35'9.0564"W	5867.84	355.239	0.39	-0.18	-0.35
12178.00	90.060	342.240	5743.27	5737.15	5931.33	-514.12	1755861.04	14636964.71	40°18'7.0828"N	80°35'9.4006"W	5953.57	355.046	0.36	-0.10	0.34



Actual Wellpath Report

OV Royalty Trust LLC BRK 205H AWP Proj: 18851'
Page 7 of 11

RECEIVED
Office of Oil and Gas
JUN 10 2021
WV Department of
Environmental Protection



REFERENCE WELLPATH IDENTIFICATION			
Operator	SWN PRODUCTION COMPANY, LLC	Well	OV Royalty Trust LLC BRK 205H
Field	Brooke	API/Legal	
Facility	OV Royalty Trust LLC Pad	Wellbore	OV Royalty Trust LLC BRK 205H AWB
Slot	Slot #205		

WELLPATH DATA (224 stations)															
MD [ft]	Inclination [°]	Azimuth [°]	TVD [ft]	Vert Sect [ft]	North [ft]	East [ft]	Grid East [US ft]	Grid North [US ft]	Latitude	Longitude	Closure Dist [ft]	Closure Dir [°]	DLS [°/100ft]	Build Rate [°/100ft]	Turn Rate [°/100ft]
12267.00	90.280	340.520	5743.01	5826.10	6015.66	-542.54	1755832.64	14637049.02	40°18'7.9175"N	80°35'9.7622"W	6040.08	354.847	1.95	0.25	-1.93
12358.00	90.800	338.830	5742.15	5917.09	6100.99	-574.15	1755801.05	14637134.31	40°18'8.7622"N	80°35'10.1650"W	6127.95	354.624	1.94	0.57	-1.86
12448.00	90.860	339.080	5740.85	6007.08	6184.98	-606.46	1755768.74	14637218.27	40°18'9.5936"N	80°35'10.5770"W	6214.64	354.400	0.29	0.07	0.28
12537.00	90.830	339.190	5739.53	6096.07	6268.13	-638.16	1755737.06	14637301.39	40°18'10.4168"N	80°35'10.9811"W	6300.54	354.187	0.13	-0.03	0.12
12626.00	90.650	339.800	5738.38	6185.06	6351.49	-669.33	1755705.90	14637384.71	40°18'11.2419"N	80°35'11.3784"W	6386.66	353.984	0.71	-0.20	0.69
12718.00	89.970	339.790	5737.89	6277.05	6437.82	-701.10	1755674.14	14637471.02	40°18'12.0965"N	80°35'11.7833"W	6475.89	353.785	0.74	-0.74	-0.01
12811.00	90.650	336.870	5737.38	6370.02	6524.24	-735.44	1755639.81	14637557.40	40°18'12.9520"N	80°35'12.2213"W	6565.56	353.569	3.22	0.73	-3.14
12901.00	90.890	337.060	5736.17	6459.92	6607.06	-770.65	1755604.61	14637640.18	40°18'13.7720"N	80°35'12.6708"W	6651.85	353.347	0.34	0.27	0.21
12994.00	90.370	337.110	5735.15	6552.83	6692.71	-806.86	1755568.42	14637725.80	40°18'14.6201"N	80°35'13.1330"W	6741.17	353.126	0.56	-0.56	0.05
13086.00	91.170	336.290	5733.91	6644.71	6777.20	-843.25	1755532.05	14637810.26	40°18'15.4567"N	80°35'13.5976"W	6829.46	352.907	1.25	0.87	-0.89
13178.00	90.120	335.660	5732.88	6736.52	6861.22	-880.70	1755494.61	14637894.25	40°18'16.2887"N	80°35'14.0759"W	6917.52	352.686	1.33	-1.14	-0.68
13269.00	89.940	336.740	5732.83	6827.36	6944.48	-917.42	1755457.90	14637977.48	40°18'17.1131"N	80°35'14.5449"W	7004.82	352.474	1.20	-0.20	1.19
13359.00	89.880	336.130	5732.97	6917.23	7026.98	-953.40	1755421.93	14638059.94	40°18'17.9300"N	80°35'15.0043"W	7091.36	352.273	0.68	-0.07	-0.68
13450.00	90.310	337.680	5732.82	7008.13	7110.68	-989.10	1755386.25	14638143.61	40°18'18.7587"N	80°35'15.4600"W	7179.14	352.081	1.77	0.47	1.70
13541.00	90.370	337.880	5732.28	7099.08	7194.92	-1023.51	1755351.85	14638227.82	40°18'19.5928"N	80°35'15.8991"W	7267.36	351.904	0.23	0.07	0.22
13633.00	90.950	336.720	5731.22	7191.01	7279.79	-1059.01	1755316.37	14638312.65	40°18'20.4330"N	80°35'16.3522"W	7356.41	351.723	1.41	0.63	-1.26
13723.00	90.280	337.260	5730.26	7280.91	7362.62	-1094.19	1755281.20	14638395.46	40°18'21.2532"N	80°35'16.8013"W	7443.48	351.547	0.96	-0.74	0.60
13814.00	90.430	337.510	5729.69	7371.84	7446.62	-1129.18	1755246.23	14638479.42	40°18'22.0849"N	80°35'17.2479"W	7531.75	351.378	0.32	0.16	0.27
13904.00	89.970	337.270	5729.38	7461.78	7529.71	-1163.78	1755211.64	14638562.47	40°18'22.9074"N	80°35'17.6895"W	7619.11	351.214	0.58	-0.51	-0.27
13994.00	91.020	336.770	5728.60	7551.69	7612.56	-1198.92	1755176.52	14638645.30	40°18'23.7278"N	80°35'18.1381"W	7706.39	351.050	1.29	1.17	-0.56
14087.00	91.290	336.690	5726.73	7644.55	7697.98	-1235.65	1755139.80	14638730.68	40°18'24.5735"N	80°35'18.6071"W	7796.52	350.881	0.30	0.29	-0.09
14180.00	90.680	337.550	5725.13	7737.45	7783.64	-1271.80	1755103.66	14638816.32	40°18'25.4217"N	80°35'19.0686"W	7886.86	350.720	1.13	-0.66	0.92
14270.00	90.580	337.940	5724.14	7827.40	7866.94	-1305.89	1755069.59	14638899.57	40°18'26.2464"N	80°35'19.5035"W	7974.59	350.575	0.45	-0.11	0.43
14362.00	90.520	337.740	5723.25	7919.36	7952.14	-1340.59	1755034.90	14638984.74	40°18'27.0899"N	80°35'19.9463"W	8064.34	350.431	0.23	-0.07	-0.22
14453.00	90.740	337.640	5722.25	8010.31	8036.32	-1375.13	1755000.37	14639068.89	40°18'27.9233"N	80°35'20.3871"W	8153.12	350.290	0.27	0.24	-0.11
14546.00	90.310	336.770	5721.40	8103.22	8122.05	-1411.16	1754964.36	14639154.59	40°18'28.7722"N	80°35'20.8470"W	8243.73	350.144	1.04	-0.46	-0.94
14637.00	90.400	337.600	5720.84	8194.14	8205.93	-1446.44	1754929.08	14639238.44	40°18'29.6026"N	80°35'21.2975"W	8332.43	350.003	0.92	0.10	0.91
14728.00	91.260	337.990	5719.52	8285.09	8290.17	-1480.83	1754894.71	14639322.64	40°18'30.4367"N	80°35'21.7363"W	8421.39	349.872	1.04	0.95	0.43
14819.00	90.550	336.960	5718.08	8376.02	8374.22	-1515.69	1754859.87	14639406.66	40°18'31.2688"N	80°35'22.1812"W	8510.28	349.741	1.37	-0.78	-1.13
14910.00	90.890	337.200	5716.94	8466.92	8458.02	-1551.12	1754824.45	14639490.43	40°18'32.0986"N	80°35'22.6336"W	8599.08	349.608	0.46	0.37	0.26



Actual Wellpath Report

OV Royalty Trust LLC BRK 205H AWP Proj: 18851'
Page 8 of 11

RECEIVED
Office of Oil and Gas
JUN 10 2021
WV Department of
Environmental Protection



REFERENCE WELLPATH IDENTIFICATION			
Operator	SWN PRODUCTION COMPANY, LLC	Well	OV Royalty Trust LLC BRK 205H
Field	Brooke	API/Legal	
Facility	OV Royalty Trust LLC Pad	Wellbore	OV Royalty Trust LLC BRK 205H AWB
Slot	Slot #205		

WELLPATH DATA (224 stations)															
MD [ft]	Inclination [°]	Azimuth [°]	TVD [ft]	Vert Sect [ft]	North [ft]	East [ft]	Grid East [US ft]	Grid North [US ft]	Latitude	Longitude	Closure Dist [ft]	Closure Dir [°]	DLS [°/100ft]	Build Rate [°/100ft]	Turn Rate [°/100ft]
15002.00	90.520	337.520	5715.81	8558.85	8542.93	-1586.54	1754789.05	14639575.31	40°18'32.9392"N	80°35'23.0856"W	8689.00	349.479	0.53	-0.40	0.35
15094.00	90.310	337.720	5715.14	8650.80	8628.00	-1621.56	1754754.03	14639660.34	40°18'33.7814"N	80°35'23.5326"W	8779.05	349.356	0.32	-0.23	0.22
15186.00	90.520	337.280	5714.47	8742.73	8712.99	-1656.77	1754718.84	14639745.30	40°18'34.6229"N	80°35'23.9820"W	8869.11	349.234	0.53	0.23	-0.48
15277.00	90.580	337.310	5713.60	8833.66	8796.93	-1691.89	1754683.73	14639829.21	40°18'35.4540"N	80°35'24.4303"W	8958.16	349.113	0.07	0.07	0.03
15370.00	90.620	337.240	5712.63	8926.58	8882.71	-1727.82	1754647.82	14639914.96	40°18'36.3033"N	80°35'24.8889"W	9049.19	348.993	0.09	0.04	-0.08
15457.00	90.250	336.760	5711.97	9013.49	8962.79	-1761.81	1754613.84	14639995.01	40°18'37.0962"N	80°35'25.3229"W	9134.31	348.879	0.70	-0.43	-0.55
15550.00	90.430	336.480	5711.41	9106.37	9048.15	-1798.71	1754576.95	14640080.34	40°18'37.9414"N	80°35'25.7942"W	9225.21	348.757	0.36	0.19	-0.30
15642.00	90.340	337.330	5710.80	9198.27	9132.78	-1834.80	1754540.88	14640164.93	40°18'38.7792"N	80°35'26.2550"W	9315.26	348.640	0.93	-0.10	0.92
15733.00	90.340	337.270	5710.26	9289.20	9216.73	-1869.92	1754505.78	14640248.84	40°18'39.6104"N	80°35'26.7033"W	9404.50	348.531	0.07	0.00	-0.07
15825.00	90.180	336.900	5709.84	9381.11	9301.47	-1905.74	1754469.97	14640333.55	40°18'40.4494"N	80°35'27.1606"W	9494.69	348.421	0.44	-0.17	-0.40
15917.00	90.150	337.000	5709.57	9473.01	9386.12	-1941.76	1754433.96	14640418.17	40°18'41.2876"N	80°35'27.6205"W	9584.87	348.312	0.11	-0.03	0.11
16008.00	90.460	336.830	5709.09	9563.92	9469.83	-1977.44	1754398.29	14640501.85	40°18'42.1164"N	80°35'28.0761"W	9674.09	348.205	0.39	0.34	-0.19
16100.00	90.550	337.350	5708.28	9655.83	9554.57	-2013.25	1754362.50	14640586.56	40°18'42.9554"N	80°35'28.5333"W	9764.38	348.101	0.57	0.10	0.57
16193.00	89.750	336.650	5708.03	9748.73	9640.18	-2049.59	1754326.17	14640672.13	40°18'43.8030"N	80°35'28.9973"W	9855.65	347.997	1.14	-0.86	-0.75
16286.00	89.970	337.090	5708.26	9841.63	9725.70	-2086.12	1754289.65	14640757.62	40°18'44.6498"N	80°35'29.4638"W	9946.92	347.894	0.53	0.24	0.47
16378.00	90.000	337.050	5708.29	9933.55	9810.43	-2121.97	1754253.82	14640842.32	40°18'45.4887"N	80°35'29.9214"W	10037.30	347.795	0.05	0.03	-0.04
16470.00	90.000	337.030	5708.29	10025.46	9895.14	-2157.85	1754217.95	14640927.00	40°18'46.3274"N	80°35'30.3796"W	10127.69	347.698	0.02	0.00	-0.02
16563.00	89.970	337.110	5708.31	10118.37	9980.79	-2194.09	1754181.73	14641012.62	40°18'47.1755"N	80°35'30.8423"W	10219.11	347.602	0.09	-0.03	0.09
16654.00	89.880	337.350	5708.43	10209.30	10064.70	-2229.31	1754146.53	14641096.49	40°18'48.0062"N	80°35'31.2919"W	10308.64	347.511	0.28	-0.10	0.26
16746.00	90.150	339.410	5708.41	10301.27	10150.22	-2263.20	1754112.64	14641181.98	40°18'48.8529"N	80°35'31.7244"W	10399.48	347.430	2.26	0.29	2.24
16837.00	90.890	339.070	5707.58	10392.27	10235.31	-2295.46	1754080.40	14641267.04	40°18'49.6951"N	80°35'32.1357"W	10489.55	347.360	0.89	0.81	-0.37
16930.00	90.520	339.380	5706.43	10485.26	10322.26	-2328.44	1754047.43	14641353.95	40°18'50.5558"N	80°35'32.5563"W	10581.62	347.288	0.52	-0.40	0.33
17023.00	90.710	339.440	5705.44	10578.25	10409.31	-2361.14	1754014.74	14641440.97	40°18'51.4175"N	80°35'32.9733"W	10673.74	347.220	0.21	0.20	0.06
17114.00	91.020	339.350	5704.06	10669.24	10494.48	-2393.17	1753982.73	14641526.10	40°18'52.2606"N	80°35'33.3816"W	10763.89	347.154	0.35	0.34	-0.10
17207.00	90.650	340.510	5702.71	10762.23	10581.82	-2425.08	1753950.83	14641613.41	40°18'53.1251"N	80°35'33.7884"W	10856.15	347.092	1.31	-0.40	1.25
17300.00	91.110	340.970	5701.28	10855.20	10669.61	-2455.75	1753920.17	14641701.16	40°18'53.9940"N	80°35'34.1791"W	10948.57	347.038	0.70	0.49	0.49
17392.00	90.950	344.130	5699.63	10947.04	10757.35	-2483.33	1753892.60	14641788.87	40°18'54.8623"N	80°35'34.5299"W	11040.27	347.001	3.44	-0.17	3.43
17484.00	91.380	344.060	5697.75	11038.73	10845.81	-2508.54	1753867.40	14641877.29	40°18'55.7375"N	80°35'34.8501"W	11132.13	346.977	0.47	0.47	-0.08
17574.00	91.230	343.520	5695.70	11128.46	10932.21	-2533.65	1753842.30	14641963.66	40°18'56.5925"N	80°35'35.1692"W	11221.97	346.951	0.62	-0.17	-0.60
17666.00	90.220	343.370	5694.54	11220.24	11020.38	-2559.87	1753816.09	14642051.80	40°18'57.4650"N	80°35'35.5023"W	11313.79	346.923	1.11	-1.10	-0.16



Actual Wellpath Report

OV Royalty Trust LLC BRK 205H AWP Proj: 18851'
Page 9 of 11

RECEIVED
 Office of Oil and Gas
 JUN 10 2021
 WV Department of
 Environmental Protection



REFERENCE WELLPATH IDENTIFICATION			
Operator	SWN PRODUCTION COMPANY, LLC	Well	OV Royalty Trust LLC BRK 205H
Field	Brooke	API/Legal	
Facility	OV Royalty Trust LLC Pad	Wellbore	OV Royalty Trust LLC BRK 205H AWB
Slot	Slot #205		

WELLPATH DATA (224 stations) † = interpolated, ‡ = extrapolated station															
MD [ft]	Inclination [°]	Azimuth [°]	TVD [ft]	Vert Sect [ft]	North [ft]	East [ft]	Grid East [US ft]	Grid North [US ft]	Latitude	Longitude	Closure Dist [ft]	Closure Dir [°]	DLS [°/100ft]	Build Rate [°/100ft]	Turn Rate [°/100ft]
17759.00	90.800	345.190	5693.71	11312.92	11109.90	-2585.06	1753790.91	14642141.28	40°18'58.3507"N	80°35'35.8223"W	11406.68	346.901	2.05	0.62	1.96
17849.00	90.800	344.120	5692.46	11402.55	11196.68	-2608.87	1753767.10	14642228.03	40°18'59.2093"N	80°35'36.1246"W	11496.60	346.884	1.19	0.00	-1.19
17938.00	90.340	343.570	5691.57	11491.30	11282.16	-2633.64	1753742.35	14642313.48	40°19'0.0551"N	80°35'36.4391"W	11585.47	346.861	0.81	-0.52	-0.62
18029.00	90.980	343.960	5690.52	11582.04	11369.53	-2659.08	1753716.92	14642400.81	40°19'0.9196"N	80°35'36.7624"W	11676.34	346.836	0.82	0.70	0.43
18120.00	89.230	343.380	5690.36	11672.80	11456.85	-2684.66	1753691.35	14642488.10	40°19'1.7837"N	80°35'37.0875"W	11767.19	346.812	2.03	-1.92	-0.64
18210.00	90.060	343.730	5690.91	11762.58	11543.17	-2710.14	1753665.88	14642574.38	40°19'2.6378"N	80°35'37.4113"W	11857.05	346.787	1.00	0.92	0.39
18303.00	90.580	344.240	5690.39	11855.30	11632.56	-2735.80	1753640.23	14642663.74	40°19'3.5223"N	80°35'37.7372"W	11949.93	346.765	0.78	0.56	0.55
18395.00	90.400	344.100	5689.61	11947.00	11721.06	-2760.89	1753615.15	14642752.21	40°19'4.3980"N	80°35'38.0559"W	12041.84	346.746	0.25	-0.20	-0.15
18487.00	90.400	344.310	5688.97	12038.69	11809.59	-2785.93	1753590.11	14642840.70	40°19'5.2739"N	80°35'38.3740"W	12133.75	346.726	0.23	0.00	0.23
18576.00	90.250	344.400	5688.46	12127.38	11895.29	-2809.93	1753566.12	14642926.37	40°19'6.1219"N	80°35'38.6787"W	12222.67	346.709	0.20	-0.17	0.10
18666.00	90.180	344.300	5688.12	12217.06	11981.95	-2834.21	1753541.85	14643013.00	40°19'6.9793"N	80°35'38.9870"W	12312.59	346.692	0.14	-0.08	-0.11
18759.00	90.890	343.770	5687.25	12309.77	12071.36	-2859.79	1753516.29	14643102.37	40°19'7.8640"N	80°35'39.3120"W	12405.49	346.672	0.95	0.76	-0.57
18826.00	90.830	344.120	5686.25	12376.57	12135.74	-2878.32	1753497.77	14643166.73	40°19'8.5010"N	80°35'39.5473"W	12472.40	346.657	0.53	-0.09	0.52
18851.00†	90.830	344.120	5685.89	12401.49	12159.78	-2885.16	1753490.93	14643190.76	40°19'8.7389"N	80°35'39.6342"W	12497.38	346.652	0.00	0.00	0.00

HOLE & CASING SECTIONS - Ref Wellbore: OV Royalty Trust LLC BRK 205H AWB Ref Wellpath: OV Royalty Trust LLC BRK 205H AWP Proj: 18851'									
String/Diameter	Start MD [ft]	End MD [ft]	Interval [ft]	Start TVD [ft]	End TVD [ft]	Start N/S [ft]	Start E/W [ft]	End N/S [ft]	End E/W [ft]
20in Conductor	26.00	100.00	74.00	26.00	100.00	0.00	0.00	0.03	-0.13
17.5in Open Hole	100.00	453.00	353.00	100.00	452.99	0.03	-0.13	-1.64	-0.55
13.375in Casing Surface	26.00	453.00	427.00	26.00	452.99	0.00	0.00	-1.64	-0.55
12.25in Open Hole	453.00	1557.00	1104.00	452.99	1544.41	-1.64	-0.55	-8.99	145.67
9.625in Casing Intermediate	26.00	1557.00	1531.00	26.00	1544.41	0.00	0.00	-8.99	145.67
8.75in Open Hole	1557.00	5055.00	3498.00	1544.41	4819.49	-8.99	145.67	-170.08	1357.79
8.5in Open Hole	5055.00	18851.00	13796.00	4819.49	5685.89	-170.08	1357.79	12159.78	-2885.16
5.5in Casing Production	26.00	18851.00	18825.00	26.00	5685.89	0.00	0.00	12159.78	-2885.16



Actual Wellpath Report

OV Royalty Trust LLC BRK 205H AWP Proj: 18851'
Page 10 of 11

RECEIVED
Office of Oil and Gas

JUN 10 2021

WV Department of
Environmental Protection



REFERENCE WELLPATH IDENTIFICATION			
Operator	SWN PRODUCTION COMPANY, LLC	Well	OV Royalty Trust LLC BRK 205H
Field	Brooke	API/Legal	
Facility	OV Royalty Trust LLC Pad	Wellbore	OV Royalty Trust LLC BRK 205H AWB
Slot	Slot #205		

TARGETS								
Name	TVD [ft]	North [ft]	East [ft]	Grid East [US ft]	Grid North [US ft]	Latitude	Longitude	Shape
OV Royalty Trust LLC BRK 205H BHL Rev-5	5628.82	12162.94	-2878.96	1753497.13	14643193.92	40°19'8.7699"N	80°35'39.5540"W	point
OV Royalty Trust LLC BRK 205H LP Rev-5	5772.00	526.16	1460.20	1757834.61	14631561.64	40°17'13.5786"N	80°34'44.2505"W	point

WELLPATH COMPOSITION - Ref Wellbore: OV Royalty Trust LLC BRK 205H AWB Ref Wellpath: OV Royalty Trust LLC BRK 205H AWP Proj: 18851'					
Start MD [ft]	End MD [ft]	Positional Uncertainty Model	Log Name/Comment	Wellbore	Survey Date
26.00	430.00	Gyrodatta 2015 - GC+WIR+DPIPE	01_Gyrodatta <17-1/2"> (50'-430')	OV Royalty Trust LLC BRK 205H AWB	1/17/2021
430.00	1499.00	OWSG MWD rev2 + HRGM	02_Premier MWD <12-1/4"> (495'-1499')	OV Royalty Trust LLC BRK 205H AWB	1/17/2021
1499.00	4987.00	OWSG MWD rev2 + HRGM	03_Premier MWD <8-3/4"> (1670'-4987')	OV Royalty Trust LLC BRK 205H AWB	1/17/2021
4987.00	18851.00	BH AutoTrak Curve (2019) (X Short spacing)	04_BH AT Curve <8-1/2"> (5089'-18826')	OV Royalty Trust LLC BRK 205H AWB	1/17/2021



Actual Wellpath Report
OV Royalty Trust LLC BRK 205H AWP Proj: 18851'
Page 11 of 11

RECEIVED
Office of Oil and Gas

JUN 10 2021

WV Department of
Environmental Protection



REFERENCE WELLPATH IDENTIFICATION			
Operator	SWN PRODUCTION COMPANY, LLC	Well	OV Royalty Trust LLC BRK 205H
Field	Brooke	API/Legal	
Facility	OV Royalty Trust LLC Pad	Wellbore	OV Royalty Trust LLC BRK 205H AWB
Slot	Slot #205		

COMMENTS
Wellpath general comments API: 47-009-00305-0000 BH Job #: 110685721 Rig: SDC 41 Duration: 01/18/2021 - 01/21/2021