

SOUTHWESTERN ENERGY

Location: Brooke County, WV Slot: Slot 201H
 Field: Brooke Well: Sandra Parr BRK 201H
 Facility: Sandra Parr BRK Pad Wellbore: Sandra Parr BRK 201H PWB

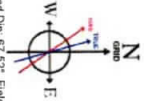
Plot reference wellpath is Sandra Parr BRK 201H PWB Rev-B.0
 Grid System: NAD83 / UTM Zone 17 North, US feet
 True vertical depths are referenced to SDC 42 (KB)
 Measured depths are referenced to SDC 42 (KB)
 SDC 42 (KB) to Mean Sea Level: 1302.1 feet
 Mean Sea Level to Ground level (At Slot: Slot 201H): -1276.1 feet
 Coordinates are in feet, referenced to Slot
 North Reference: Grid north
 Scale: True distance
 Depths are in feet
 Created by: atlepen on 2019-03-19
 Database: WA_MPL_EASTERNUS_Data



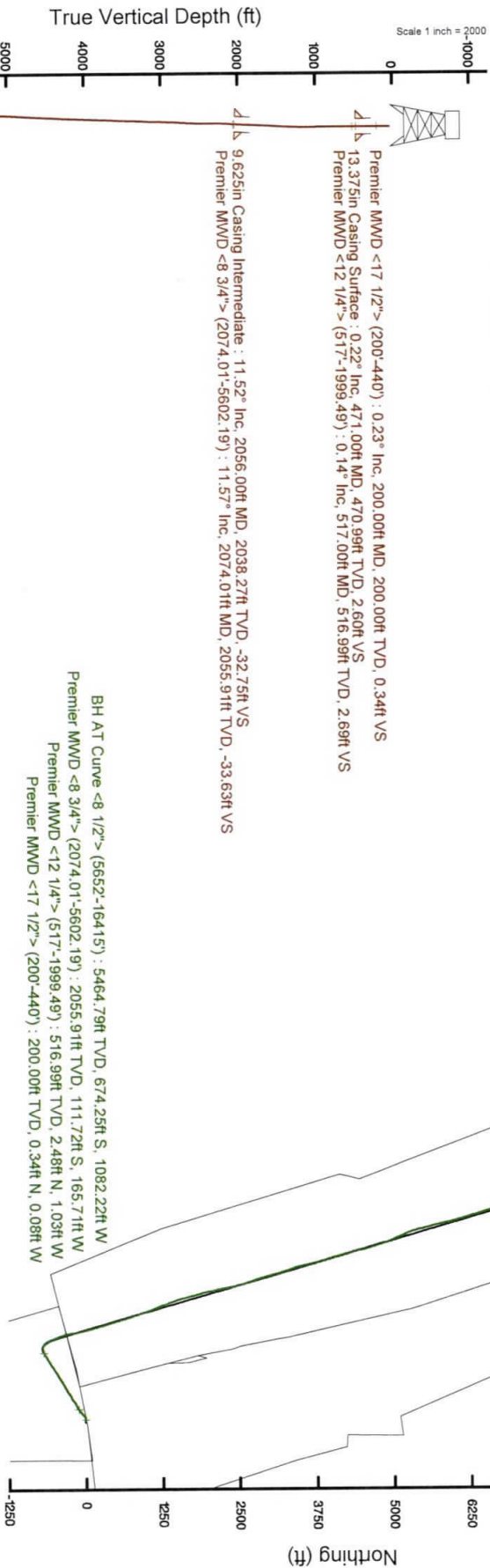
Location Information			
Facility Name	Grid East (US ft)	Grid North (US ft)	Latitude
Sandra Parr BRK Pad	1774090.396	14592474.069	40°10'46.360"N
Local N (ft)	Local E (ft)	Grid East (US ft)	Grid North (US ft)
Slot	Local N (ft)	Local E (ft)	Latitude
Slot 201H	-3.77	-41.81	40°10'46.325"N
SDC 42 (KB) to Ground level (At Slot: Slot 201H)	1774048.603	14592470.303	80°31'17.672"W
Mean Sea Level to Ground level (At Slot: Slot 201H)			26ft
SDC 42 (KB) to Mean Sea Level			-1276.1ft
			1302.1ft

Comments	
API: 47-009-00251-0000	
BH Job #: 109653631	
Rpt: SDC 42	
Duration: 02/13/2019 - 02/17/2019	

Projection to Bit: 6257.33ft TVD, 8983.70ft N, 4041.22ft W



User specified Dip: 67.52° Field: 5264 nT
 Magnetic North is 8.46 degrees West of True North (at 1302.1 ft)
 Grid North is 0.31 degrees East of True North (at 1302.1 ft)
 To correct azimuth from Magnetic to Grid subtract 8.77 degrees





Actual Wellpath Report

Sandra Parr BRK 201H AWP Proj: 16440'

Page 1 of 10



REFERENCE WELLPATH IDENTIFICATION			
Operator	SOUTHWESTERN ENERGY	Slot	Slot 201H
Area	Brooke County, WV	Well	Sandra Parr BRK 201H
Field	Brooke	Wellbore	Sandra Parr BRK 201H AWB
Facility	Sandra Parr BRK Pad		

REPORT SETUP INFORMATION			
Projection System	NAD83 / UTM Zone 17 North, US feet	Software System	WellArchitect@ 5.1
North Reference	Grid	User	Atenjen
Scale	0.999620	Report Generated	19/Mar/2019 at 17:47
Convergence at slot	0.31° East	Database/Source file	WA_MPL_EASTERNUUS_Defn/Sandra_Parr_BRK_201H_AWP_Proj_16440_.xml

WELLPATH LOCATION						
	Local coordinates		Grid coordinates		Geographic coordinates	
	North[ft]	East[ft]	Easting[US ft]	Northing[US ft]	Latitude	Longitude
Slot Location	-3.77	-41.81	1774048.60	14592470.30	40°10'46.325"N	80°31'17.672"W
Facility Reference Pt			1774090.40	14592474.07	40°10'46.360"N	80°31'17.133"W
Field Reference Pt			0.00	0.00	0°00'00.000"	85°29'19.478"W

WELLPATH DATUM			
Calculation method	Minimum curvature	SDC 42 (KB) to Facility Vertical Datum	
Horizontal Reference Pt	Slot	SDC 42 (KB) to Mean Sea Level	
Vertical Reference Pt	SDC 42 (KB)	SDC 42 (KB) to Ground Level at Slot (Slot 201H)	
MD Reference Pt	SDC 42 (KB)	Section Origin	
Field Vertical Reference	Mean Sea Level	Section Azimuth	
		1302.10ft	
		1302.10ft	
		26.00ft	
		N 0.00, E 0.00 ft	
		335.70°	



Actual Wellpath Report

Sandra Parr BRK 201H AWP Proj: 16440'

Page 2 of 10



REFERENCE WELLPATH IDENTIFICATION		Slot	Slot 201H
Operator	SOUTHWESTERN ENERGY	Well	Sandra Parr BRK 201H
Area	Brooke County, WV	Wellbore	Sandra Parr BRK 201H AWB
Field	Brooke		
Facility	Sandra Parr BRK Pad		

WELLPATH DATA (181 stations) † = interpolated/extrapolated station															
MD	Inclination	Azimuth	TVD	Vert Sect	North	East	Grid East	Grid North	Latitude	Longitude	Closure Dist	Closure Dir	DLS	Build Rate	Turn Rate
(ft)	(°)	(°)	(ft)	(ft)	(ft)	(ft)	(US ft)	(US ft)			(ft)	(°)	(°/100ft)	(°/100ft)	(°/100ft)
0.00†	0.000	346.660	0.00	0.00	0.00	0.00	1774048.60	14592470.30	40°10'46.325"N	80°31'17.672"W	0.00	0.000	0.00	0.00	0.00
26.00	0.000	346.660	26.00	0.00	0.00	0.00	1774048.60	14592470.30	40°10'46.325"N	80°31'17.672"W	0.00	0.000	0.00	0.00	0.00
200.00	0.230	346.660	200.00	0.34	0.34	-0.08	1774048.52	14592470.64	40°10'46.328"N	80°31'17.673"W	0.35	346.660	0.13	0.13	-7.67
250.00	0.480	343.750	250.00	0.65	0.64	-0.16	1774048.44	14592470.94	40°10'46.331"N	80°31'17.674"W	0.66	345.735	0.50	0.50	-5.82
350.00	0.660	334.330	349.99	1.64	1.56	-0.53	1774048.07	14592471.86	40°10'46.340"N	80°31'17.679"W	1.65	341.264	0.20	0.18	-9.42
440.00	0.380	319.330	439.99	2.44	2.25	-0.95	1774047.66	14592472.56	40°10'46.347"N	80°31'17.684"W	2.44	337.181	0.34	-0.31	-16.67
517.00	0.140	67.170	516.99	2.69	2.48	-1.03	1774047.58	14592472.79	40°10'46.350"N	80°31'17.685"W	2.69	337.518	0.58	-0.31	140.05
603.40	0.170	99.210	603.39	2.61	2.50	-0.80	1774047.80	14592472.81	40°10'46.350"N	80°31'17.682"W	2.63	342.199	0.10	0.03	37.08
699.02	0.340	87.440	699.01	2.43	2.49	-0.38	1774048.22	14592472.80	40°10'46.350"N	80°31'17.677"W	2.52	351.325	0.19	0.18	-12.31
794.61	0.450	233.040	794.60	2.24	2.28	-0.40	1774048.21	14592472.87	40°10'46.348"N	80°31'17.677"W	2.32	350.123	0.79	0.12	152.32
889.70	2.350	255.620	889.65	2.50	1.57	-2.58	1774048.02	14592471.87	40°10'46.341"N	80°31'17.705"W	3.02	301.315	2.04	2.00	23.75
984.64	4.760	252.190	984.41	3.28	-0.12	-8.22	1774040.39	14592470.19	40°10'46.324"N	80°31'17.778"W	8.22	269.189	2.55	2.54	-3.61
1078.96	7.240	248.930	1078.20	4.05	-3.45	-17.49	1774031.12	14592466.85	40°10'46.292"N	80°31'17.898"W	17.83	258.842	2.65	2.63	-3.46
1175.44	9.020	243.060	1173.71	4.05	-9.06	-29.91	1774018.70	14592461.24	40°10'46.237"N	80°31'18.058"W	31.25	253.143	2.03	1.84	-6.08
1271.26	10.600	237.570	1268.13	2.46	-17.19	-44.05	1774004.57	14592453.12	40°10'46.157"N	80°31'18.241"W	47.28	248.677	1.91	1.65	-5.73
1366.77	11.320	232.960	1361.90	-0.85	-27.55	-58.94	1773989.68	14592442.76	40°10'46.056"N	80°31'18.433"W	65.07	244.948	1.19	0.75	-4.83
1463.16	11.750	229.490	1456.34	-5.68	-39.62	-73.96	1773974.67	14592430.69	40°10'45.937"N	80°31'18.627"W	83.90	241.819	0.85	0.45	-3.60
1559.70	10.790	229.490	1551.02	-10.95	-51.88	-88.30	1773960.33	14592418.44	40°10'45.817"N	80°31'18.813"W	102.41	239.564	0.99	-0.99	0.00
1655.84	11.030	228.490	1645.42	-16.18	-63.82	-102.03	1773946.61	14592406.51	40°10'45.700"N	80°31'18.991"W	120.35	237.974	0.32	0.25	-1.04
1752.34	10.650	233.790	1740.20	-20.75	-75.21	-116.14	1773932.51	14592395.12	40°10'45.588"N	80°31'19.173"W	138.36	237.074	1.10	-0.39	5.49
1848.92	10.430	234.670	1835.15	-24.27	-85.54	-130.47	1773918.18	14592384.80	40°10'45.487"N	80°31'19.359"W	156.01	236.752	0.28	-0.23	0.91
1945.33	11.510	234.830	1929.80	-27.75	-96.12	-145.45	1773903.20	14592374.22	40°10'45.383"N	80°31'19.552"W	174.35	236.542	1.12	1.12	0.17
1999.49	11.380	231.910	1982.88	-30.04	-102.53	-154.08	1773894.58	14592367.81	40°10'45.320"N	80°31'19.664"W	185.07	236.358	1.10	-0.24	-5.39
2074.01	11.570	231.480	2055.91	-33.63	-111.72	-165.71	1773882.96	14592358.63	40°10'45.230"N	80°31'19.815"W	199.85	236.012	0.28	0.25	-0.58
2138.42	11.680	227.610	2119.00	-37.24	-120.14	-175.58	1773873.09	14592350.21	40°10'45.147"N	80°31'19.942"W	212.75	235.618	1.22	0.17	-6.01
2235.34	11.490	232.950	2213.95	-42.42	-132.57	-190.53	1773858.15	14592337.78	40°10'45.025"N	80°31'20.136"W	232.11	235.170	1.12	-0.20	5.51
2331.89	11.670	246.740	2308.55	-44.36	-142.22	-207.18	1773841.50	14592328.14	40°10'44.931"N	80°31'20.351"W	251.30	235.532	2.87	0.19	14.28
2427.13	13.240	244.440	2401.55	-44.43	-150.73	-225.87	1773822.82	14592319.63	40°10'44.848"N	80°31'20.592"W	271.55	236.283	1.73	1.65	-2.41
2524.74	13.880	243.270	2486.44	-45.17	-160.82	-246.41	1773802.29	14592309.54	40°10'44.749"N	80°31'20.858"W	294.25	236.869	0.71	0.66	-1.20
2620.61	16.210	243.380	2589.02	-46.20	-171.99	-268.65	1773780.06	14592298.38	40°10'44.640"N	80°31'21.145"W	318.98	237.372	2.43	2.43	0.11



Actual Wellpath Report

Sandra Parr BRK 201H AWP Proj: 16440'

Page 3 of 10



REFERENCE WELLPATH IDENTIFICATION

Operator	SOUTHWESTERN ENERGY	Slot	Slot 201H
Area	Brooke County, WV	Well	Sandra Parr BRK 201H
Field	Brooke	Wellbore	Sandra Parr BRK 201H AWB
Facility	Sandra Parr BRK Pad		

WELLPATH DATA (181 stations)

MD (ft)	Inclination (°)	Azimuth (°)	TVD (ft)	Vert Sect (ft)	North (ft)	East (ft)	Grid East (US ft)	Grid North (US ft)	Latitude	Longitude	Closure Dist (ft)	Closure Dir (°)	DLS (°/100ft)	Build Rate (°/100ft)	Turn Rate (°/100ft)
2716.61	18.780	230.970	2680.60	-50.68	-187.73	-292.64	1773756.07	14592282.64	40°10'44.485"N	80°31'21.455"W	347.68	237.319	4.70	2.68	-12.93
2811.40	17.540	234.460	2770.67	-57.34	-205.65	-316.12	1773732.60	14592264.74	40°10'44.310"N	80°31'21.759"W	377.12	236.955	1.74	-1.31	3.68
2907.38	18.630	240.700	2861.91	-61.50	-221.56	-341.26	1773707.47	14592248.83	40°10'44.154"N	80°31'22.084"W	406.87	237.007	2.31	1.14	6.50
3004.07	19.160	238.880	2953.39	-64.73	-237.32	-368.31	1773680.43	14592233.08	40°10'43.999"N	80°31'22.433"W	438.15	237.205	0.82	0.55	-1.88
3100.40	17.960	239.180	3044.33	-68.28	-253.03	-394.49	1773654.26	14592217.37	40°10'43.846"N	80°31'22.772"W	468.67	237.324	1.25	-1.25	0.31
3196.43	16.650	236.430	3136.40	-72.19	-268.29	-418.77	1773629.99	14592202.12	40°10'43.696"N	80°31'23.086"W	497.34	237.354	1.60	-1.36	-2.85
3291.61	17.350	235.910	3227.42	-76.80	-283.78	-441.89	1773606.89	14592186.63	40°10'43.544"N	80°31'23.384"W	525.16	237.291	0.75	0.74	-0.55
3387.66	18.660	239.110	3318.77	-81.00	-299.70	-466.93	1773581.85	14592170.72	40°10'43.388"N	80°31'23.708"W	554.84	237.306	1.71	1.36	3.33
3486.36	20.320	243.670	3411.81	-83.42	-315.41	-495.85	1773552.94	14592155.02	40°10'43.235"N	80°31'24.082"W	587.66	237.540	2.28	1.68	4.62
3582.46	20.170	240.080	3501.98	-85.63	-331.07	-525.16	1773523.64	14592139.36	40°10'43.081"N	80°31'24.461"W	620.81	237.772	1.30	-0.16	-3.74
3678.65	19.930	236.610	3592.34	-89.85	-348.37	-553.23	1773495.59	14592122.07	40°10'42.921"N	80°31'24.823"W	653.77	237.801	1.26	-0.25	-3.61
3775.11	19.010	238.250	3683.29	-94.48	-365.68	-580.31	1773468.51	14592104.76	40°10'42.742"N	80°31'25.173"W	685.92	237.783	1.11	-0.95	-1.70
3873.31	17.540	241.380	3776.53	-97.67	-381.19	-606.90	1773441.93	14592089.26	40°10'42.590"N	80°31'25.517"W	716.68	237.868	1.80	-1.50	3.19
3968.09	16.690	238.720	3867.12	-100.40	-395.10	-631.07	1773417.77	14592075.36	40°10'42.454"N	80°31'25.829"W	744.55	237.951	1.22	-0.90	-2.81
4063.62	15.800	238.320	3958.83	-103.74	-409.05	-653.87	1773394.99	14592061.41	40°10'42.318"N	80°31'26.124"W	771.27	237.970	0.94	-0.93	-0.42
4159.95	16.170	239.000	4051.44	-106.99	-422.85	-676.52	1773372.34	14592047.62	40°10'42.182"N	80°31'26.417"W	797.80	237.994	0.43	0.38	0.71
4255.64	17.190	238.880	4143.10	-110.22	-437.02	-700.05	1773348.82	14592033.45	40°10'42.044"N	80°31'26.721"W	825.26	238.025	1.07	1.07	-0.13
4352.07	19.060	237.620	4234.74	-114.13	-452.81	-725.55	1773323.33	14592017.66	40°10'41.889"N	80°31'27.051"W	855.26	238.032	1.98	1.94	-1.31
4448.46	19.580	236.760	4325.70	-118.85	-470.10	-752.35	1773296.54	14592000.39	40°10'41.720"N	80°31'27.397"W	887.14	238.001	0.61	0.54	-0.89
4544.93	18.920	237.960	4416.78	-123.47	-487.25	-779.13	1773269.77	14591983.24	40°10'41.551"N	80°31'27.743"W	918.94	237.979	0.80	-0.68	1.24
4640.28	17.890	238.060	4507.25	-127.50	-503.20	-804.66	1773244.25	14591967.29	40°10'41.395"N	80°31'28.073"W	949.05	237.980	1.08	-1.08	0.10
4736.20	17.550	237.060	4598.62	-131.63	-518.86	-829.30	1773219.62	14591951.64	40°10'41.242"N	80°31'28.392"W	978.24	237.967	0.48	-0.35	-1.04
4832.60	18.110	235.650	4690.39	-136.43	-535.22	-853.87	1773195.06	14591935.29	40°10'41.081"N	80°31'28.709"W	1007.74	237.960	0.73	0.58	-1.46
4928.81	19.300	236.200	4781.52	-141.66	-552.50	-879.42	1773169.51	14591918.01	40°10'40.912"N	80°31'29.040"W	1038.58	237.861	1.25	1.24	0.57
5025.05	19.620	234.750	4872.26	-147.35	-570.40	-905.84	1773143.11	14591899.85	40°10'40.744"N	80°31'29.381"W	1070.61	237.789	0.60	0.33	-1.51
5121.64	19.210	238.220	4963.36	-152.50	-588.40	-932.59	1773116.37	14591882.13	40°10'40.560"N	80°31'29.727"W	1102.70	237.751	1.27	-0.42	3.59
5217.43	18.670	240.880	5053.96	-155.84	-604.16	-959.38	1773089.59	14591866.37	40°10'40.406"N	80°31'30.073"W	1133.77	237.800	1.06	-0.56	2.78
5313.67	18.770	241.770	5145.11	-158.20	-618.98	-986.48	1773062.50	14591851.56	40°10'40.261"N	80°31'30.424"W	1164.60	237.893	0.31	0.10	0.92
5410.06	20.060	241.040	5236.02	-160.61	-634.32	-1014.61	1773034.38	14591836.22	40°10'40.110"N	80°31'30.787"W	1196.58	237.987	1.36	1.34	-0.76
5505.48	19.460	234.150	5325.83	-165.12	-651.56	-1041.81	1773007.19	14591818.99	40°10'39.942"N	80°31'31.139"W	1228.78	237.978	2.52	-0.63	-7.22



Actual Wellpath Report

Sandra Parr BRK 201H AWP Proj: 16440'

Page 4 of 10



REFERENCE WELLPATH IDENTIFICATION

Operator	SOUTHWESTERN ENERGY	Slot	Slot 201H
Area	Brooke County, WV	Well	Sandra Parr BRK 201H
Field	Brooke	Wellbore	Sandra Parr BRK 201H AWB
Facility	Sandra Parr BRK Pad		

WELLPATH DATA (181 stations)

MD (ft)	Inclination (°)	Azimuth (°)	TVD (ft)	Vert Sect (ft)	North (ft)	East (ft)	Grid East (US ft)	Grid North (US ft)	Latitude	Longitude	Closure Dist (ft)	Closure Dir (°)	DLS (°/100ft)	Build Rate (°/100ft)	Turn Rate (°/100ft)
5602.19	18.190	243.490	5417.39	-168.93	-667.74	-1068.39	1772980.63	14591802.82	40°10'39.783"N	80°31'31.482"W	1259.89	237.995	3.38	-1.31	9.66
5652.00	17.570	246.090	5464.79	-169.18	-674.25	-1082.22	1772966.80	14591796.31	40°10'39.719"N	80°31'31.661"W	1275.07	238.076	2.03	-1.24	5.22
5747.00	16.850	247.050	5555.54	-168.75	-685.43	-1108.00	1772941.02	14591785.13	40°10'39.610"N	80°31'31.994"W	1302.88	238.258	0.81	-0.76	1.01
5843.00	16.240	250.750	5647.57	-167.24	-695.29	-1133.49	1772915.55	14591775.28	40°10'39.514"N	80°31'32.323"W	1329.74	238.475	1.27	-0.64	3.85
5939.00	17.300	270.850	5739.56	-159.99	-699.50	-1160.46	1772888.59	14591771.07	40°10'39.474"N	80°31'32.671"W	1354.98	238.919	6.11	-1.10	20.94
6035.00	19.550	291.510	5830.73	-142.39	-693.40	-1189.71	1772859.35	14591777.17	40°10'39.536"N	80°31'33.047"W	1377.03	239.765	7.15	-2.34	21.52
6131.00	22.480	310.650	5920.44	-114.20	-675.52	-1218.62	1772830.45	14591795.04	40°10'39.714"N	80°31'33.418"W	1393.33	240.999	7.73	3.05	19.94
6227.00	27.620	323.990	6007.45	-75.73	-645.52	-1245.67	1772803.41	14591825.03	40°10'40.012"N	80°31'33.765"W	1402.99	242.606	7.93	5.35	13.90
6323.00	33.770	331.650	6090.00	-27.26	-603.99	-1271.45	1772777.63	14591866.55	40°10'40.922"N	80°31'34.094"W	1407.62	244.591	7.58	6.41	7.98
6419.00	40.170	335.840	6166.67	30.39	-552.19	-1296.83	1772752.27	14591918.32	40°10'40.937"N	80°31'34.417"W	1409.49	246.936	7.16	6.67	4.36
6515.00	46.180	340.130	6236.66	95.95	-491.30	-1321.30	1772727.81	14591979.19	40°10'41.540"N	80°31'34.728"W	1409.68	249.603	6.96	6.26	4.47
6563.00	48.380	340.020	6299.22	131.11	-458.15	-1333.32	1772715.80	14592012.33	40°10'41.868"N	80°31'34.881"W	1409.83	251.036	4.59	4.58	-0.23
6611.00	52.210	339.830	6299.88	167.93	-423.47	-1345.99	1772703.13	14592046.99	40°10'42.212"N	80°31'35.042"W	1411.04	252.536	7.98	7.98	-0.40
6659.00	56.690	341.190	6327.78	206.84	-386.66	-1359.00	1772690.12	14592083.79	40°10'42.576"N	80°31'35.207"W	1412.94	254.118	9.61	9.33	2.83
6707.00	61.140	343.520	6352.56	247.65	-347.50	-1371.44	1772677.68	14592122.94	40°10'42.964"N	80°31'35.364"W	1414.78	255.782	10.16	9.27	4.85
6755.00	66.220	346.390	6373.84	290.09	-305.96	-1382.58	1772666.55	14592164.46	40°10'43.375"N	80°31'35.505"W	1416.03	257.522	11.86	10.58	5.98
6804.00	70.780	348.880	6391.80	334.68	-261.44	-1392.33	1772656.81	14592208.96	40°10'43.815"N	80°31'35.628"W	1416.66	259.365	10.44	9.31	5.08
6852.00	75.410	349.550	6405.75	379.32	-216.34	-1400.91	1772648.22	14592254.05	40°10'44.261"N	80°31'35.735"W	1417.52	261.221	9.74	9.65	1.40
6900.00	80.040	349.640	6415.95	424.84	-170.22	-1409.38	1772639.76	14592300.15	40°10'44.718"N	80°31'35.841"W	1419.62	263.113	9.65	9.65	0.19
6948.00	84.450	349.630	6422.43	470.99	-123.45	-1417.94	1772631.21	14592346.90	40°10'45.180"N	80°31'35.948"W	1423.30	265.024	9.19	9.19	-0.02
6996.00	87.850	348.620	6425.65	517.56	-76.42	-1426.97	1772622.18	14592393.91	40°10'45.645"N	80°31'36.061"W	1429.02	266.934	7.39	7.08	-2.10
7092.00	91.020	345.770	6426.60	611.61	17.16	-1448.24	1772600.91	14592487.46	40°10'46.571"N	80°31'36.329"W	1448.35	270.679	4.44	3.30	-2.97
7188.00	90.920	345.310	6424.97	706.18	110.11	-1472.21	1772576.95	14592580.37	40°10'47.491"N	80°31'36.631"W	1476.32	274.735	0.49	-0.10	-0.48
7285.00	90.950	343.480	6423.39	802.05	203.52	-1498.30	1772550.81	14592673.74	40°10'48.415"N	80°31'36.911"W	1512.06	277.277	1.89	0.03	-1.89
7381.00	90.740	342.130	6420.97	897.30	295.21	-1526.68	1772523.68	14592765.40	40°10'49.323"N	80°31'37.320"W	1554.96	280.944	1.42	-0.22	-1.41
7477.00	90.740	342.900	6420.93	992.62	386.77	-1555.52	1772493.68	14592856.93	40°10'50.229"N	80°31'37.666"W	1602.88	283.963	0.80	0.00	0.80
7573.00	90.680	343.630	6419.54	1087.77	478.70	-1583.16	1772466.05	14592948.82	40°10'51.139"N	80°31'38.035"W	1653.95	286.824	0.76	-0.06	0.76
7669.00	90.770	344.070	6418.33	1182.79	570.90	-1609.86	1772439.36	14593040.99	40°10'52.052"N	80°31'38.373"W	1708.09	289.526	0.47	0.09	0.46
7766.00	90.860	342.670	6416.95	1278.91	663.83	-1637.62	1772411.61	14593133.88	40°10'52.972"N	80°31'38.724"W	1767.05	292.066	1.45	0.09	-1.44
7862.00	90.710	339.990	6415.63	1374.43	754.76	-1668.34	1772380.90	14593224.78	40°10'53.872"N	80°31'39.114"W	1831.13	294.342	2.80	-0.16	-2.79



Actual Wellpath Report

Sandra Parr BRK 201H AWP Proj: 16440'

Page 5 of 10



REFERENCE WELLPATH IDENTIFICATION

Operator	SOUTHWESTERN ENERGY	Slot	Slot 201H
Area	Brooke County, WV	Well	Sandra Parr BRK 201H
Field	Brooke	Wellbore	Sandra Parr BRK 201H AWB
Facility	Sandra Parr BRK Pad		

WELLPATH DATA (181 stations)

MD	Inclination	Azimuth	TVD	Vert Sect	North	East	Grid East	Grid North	Latitude	Longitude	Closure Dist	Closure Dir	DLS	Build Rate	Turn Rate
(ft)	(°)	(°)	(ft)	(ft)	(ft)	(ft)	(US ft)	(US ft)			(ft)	(°)	(°/100ft)	(°/100ft)	(°/100ft)
7958.00	90.580	342.980	6414.55	1466.93	845.78	-1698.82	1772350.43	14593315.76	40°10'54.773"N	80°31'39.500"W	1897.72	296.467	3.12	-0.14	3.11
8053.00	91.480	341.950	6412.84	1564.25	936.35	-1727.44	1772321.82	14593406.29	40°10'55.669"N	80°31'39.863"W	1964.89	298.460	1.44	0.95	-1.08
8149.00	91.350	339.920	6410.47	1659.81	1027.05	-1758.78	1772290.49	14593496.96	40°10'56.567"N	80°31'40.260"W	2036.70	300.283	2.12	-0.14	-2.11
8245.00	91.480	337.950	6408.10	1755.63	1116.60	-1793.28	1772256.01	14593586.48	40°10'57.454"N	80°31'40.699"W	2112.50	301.909	2.06	0.14	-2.05
8341.00	91.200	337.120	6405.86	1851.55	1205.29	-1829.95	1772219.35	14593675.13	40°10'58.332"N	80°31'41.165"W	2191.22	303.371	0.91	-0.29	-0.86
8438.00	91.380	339.660	6403.67	1948.41	1295.44	-1865.66	1772183.65	14593765.25	40°10'59.225"N	80°31'41.619"W	2271.31	304.775	2.62	0.19	2.62
8532.00	91.320	339.750	6401.46	2042.16	1383.58	-1898.26	1772151.07	14593853.36	40°11'00.098"N	80°31'42.033"W	2348.97	306.087	0.12	-0.06	0.10
8629.00	91.690	341.570	6398.91	2138.76	1475.07	-1930.37	1772118.97	14593944.81	40°11'01.004"N	80°31'42.440"W	2429.44	307.385	1.91	0.38	1.88
8725.00	91.630	343.330	6396.13	2234.05	1566.56	-1959.30	1772090.05	14594036.27	40°11'01.909"N	80°31'42.807"W	2508.58	308.644	1.83	-0.06	1.83
8821.00	91.690	345.890	6393.35	2328.84	1659.07	-1984.77	1772064.59	14594128.74	40°11'02.825"N	80°31'43.129"W	2586.86	309.892	2.67	0.06	2.67
8918.00	91.750	346.600	6390.44	2424.21	1753.19	-2008.07	1772041.30	14594222.82	40°11'03.756"N	80°31'43.422"W	2665.71	311.123	0.43	0.06	0.42
9013.00	91.720	343.650	6387.56	2517.91	1844.89	-2032.68	1772016.70	14594314.49	40°11'04.663"N	80°31'43.733"W	2745.07	312.227	2.79	-0.03	-2.79
9110.00	91.720	344.660	6384.65	2613.81	1938.16	-2059.15	1771990.23	14594407.73	40°11'05.586"N	80°31'44.068"W	2827.82	313.266	1.04	0.00	1.04
9206.00	91.720	348.280	6381.77	2708.06	2031.44	-2081.60	1771967.80	14594500.97	40°11'06.509"N	80°31'44.351"W	2908.57	314.301	3.77	0.00	3.77
9302.00	91.750	346.450	6378.86	2802.03	2125.07	-2102.59	1771946.82	14594594.56	40°11'07.436"N	80°31'44.615"W	2989.45	315.305	1.91	0.03	-1.91
9398.00	91.820	349.260	6375.87	2895.83	2218.86	-2122.77	1771926.64	14594688.32	40°11'08.364"N	80°31'44.869"W	3070.75	316.268	2.93	0.07	2.93
9494.00	91.690	350.940	6372.93	2988.76	2313.39	-2139.27	1771910.15	14594782.81	40°11'09.299"N	80°31'45.075"W	3150.91	317.239	1.75	-0.14	1.75
9590.00	91.720	348.330	6370.07	3081.89	2407.77	-2156.53	1771892.89	14594877.16	40°11'10.232"N	80°31'45.291"W	3232.34	318.151	2.72	0.03	-2.72
9686.00	91.510	344.870	6367.37	3176.11	2501.11	-2178.77	1771870.67	14594970.45	40°11'11.156"N	80°31'45.571"W	3317.01	318.940	3.61	-0.22	-3.60
9782.00	91.480	341.770	6364.86	3271.21	2593.02	-2206.31	1771843.13	14595062.34	40°11'12.065"N	80°31'45.919"W	3404.64	319.607	3.23	-0.03	-3.23
9878.00	91.390	341.210	6362.46	3366.69	2684.03	-2236.78	1771812.68	14595153.31	40°11'12.966"N	80°31'46.306"W	3493.88	320.193	0.59	-0.09	-0.58
9975.00	91.350	341.300	6360.14	3463.21	2775.86	-2267.94	1771781.53	14595245.10	40°11'13.875"N	80°31'46.701"W	3584.54	320.750	0.10	-0.04	0.09
10071.00	91.420	342.500	6357.82	3558.62	2867.08	-2297.76	1771751.72	14595336.29	40°11'14.778"N	80°31'47.079"W	3674.21	321.290	1.25	0.07	1.25
10166.00	91.380	344.530	6355.50	3652.71	2958.14	-2324.74	1771724.79	14595427.02	40°11'15.680"N	80°31'47.420"W	3762.29	321.837	2.14	-0.04	2.14
10262.00	91.380	345.860	6353.18	3747.36	3050.93	-2349.20	1771700.21	14595512.06	40°11'16.598"N	80°31'47.730"W	3850.59	322.404	1.39	0.00	1.39
10358.00	91.380	345.210	6350.87	3841.92	3143.85	-2373.23	1771676.37	14595602.96	40°11'17.517"N	80°31'48.032"W	3939.02	322.952	0.68	0.00	-0.68
10454.00	91.510	341.390	6348.45	3937.03	3235.76	-2400.77	1771648.75	14595704.83	40°11'18.427"N	80°31'48.381"W	4029.13	323.426	3.98	0.14	-3.98
10551.00	91.320	339.560	6346.05	4033.66	3327.15	-2433.18	1771616.35	14595796.18	40°11'19.332"N	80°31'48.792"W	4121.93	323.822	1.90	-0.20	-1.89
10647.00	91.260	343.830	6343.89	4129.09	3418.25	-2463.32	1771586.23	14595887.25	40°11'20.234"N	80°31'49.175"W	4213.35	324.222	4.45	-0.06	4.45
10744.00	91.450	347.630	6341.60	4224.56	3512.21	-2487.22	1771562.34	14595981.17	40°11'21.163"N	80°31'49.476"W	4303.70	324.695	3.92	0.20	3.92



Actual Wellpath Report

Sandra Parr BRK 201H AWP Proj: 16440'

Page 6 of 10



REFERENCE WELLPATH IDENTIFICATION

Operator	SOUTHWESTERN ENERGY		Slot	Slot 201H
Area	Brooke County, WV		Well	Sandra Parr BRK 201H
Field	Brooke		Wellbore	Sandra Parr BRK 201H AWB
Facility	Sandra Parr BRK Pad			

WELLPATH DATA (181 stations)

MD	Inclination	Azimuth	TVD	Vert Sect	North	East	Grid East	Grid North	Latitude	Longitude	Closure Dist	Closure Dir	DLS	Build Rate	Turn Rate
[ft]	[°]	[°]	[ft]	[ft]	[ft]	[ft]	[US ft]	[US ft]			[ft]	[°]	[°/100ft]	[°/100ft]	[°/100ft]
10839.00	91.450	346.930	6339.19	4317.60	3604.85	-2508.13	1771541.43	14596073.78	40°11'22.080"N	80°31'49.739"W	4391.54	325.171	0.74	0.00	-0.74
10935.00	91.480	345.760	6336.74	4411.91	3698.10	-2530.78	1771518.79	14596167.00	40°11'23.003"N	80°31'50.025"W	4481.16	325.614	1.22	0.03	-1.22
11031.00	91.390	344.730	6334.33	4506.55	3790.91	-2555.22	1771494.35	14596259.76	40°11'23.921"N	80°31'50.333"W	4571.67	326.018	1.08	-0.09	-1.07
11128.00	91.450	344.130	6331.93	4602.40	3884.32	-2581.25	1771468.34	14596353.14	40°11'24.845"N	80°31'50.662"W	4663.78	326.395	0.62	0.06	-0.62
11224.00	91.350	341.880	6329.58	4697.59	3976.09	-2609.30	1771440.30	14596444.88	40°11'25.754"N	80°31'51.018"W	4755.82	326.725	2.35	-0.10	-2.34
11320.00	91.390	343.850	6327.29	4792.80	4067.80	-2637.58	1771412.03	14596536.55	40°11'26.662"N	80°31'51.376"W	4848.07	327.040	2.05	0.04	2.05
11417.00	91.320	343.870	6325.00	4888.80	4160.95	-2664.53	1771386.09	14596629.67	40°11'27.583"N	80°31'51.717"W	4940.98	327.366	0.08	-0.07	0.02
11513.00	91.420	345.480	6322.70	4983.59	4253.51	-2689.90	1771359.73	14596722.19	40°11'28.499"N	80°31'52.037"W	5032.68	327.691	1.68	0.10	1.68
11609.00	91.450	346.630	6320.30	5078.00	4346.65	-2713.03	1771336.61	14596815.29	40°11'29.421"N	80°31'52.329"W	5123.85	328.029	1.20	0.03	1.20
11705.00	91.380	346.390	6317.97	5172.26	4439.97	-2735.41	1771314.23	14596908.58	40°11'30.344"N	80°31'52.611"W	5214.96	328.363	0.26	-0.07	-0.25
11802.00	91.170	345.950	6315.77	5267.62	4534.14	-2758.59	1771291.06	14597002.71	40°11'31.276"N	80°31'52.903"W	5307.38	328.683	0.50	-0.22	-0.45
11898.00	91.020	342.900	6313.93	5362.49	4626.58	-2784.36	1771266.30	14597095.12	40°11'32.191"N	80°31'53.229"W	5399.81	328.960	3.18	-0.16	-3.18
11994.00	90.980	342.720	6312.26	5457.73	4718.28	-2812.73	1771236.95	14597186.78	40°11'33.099"N	80°31'53.568"W	5493.05	329.199	0.19	-0.04	-0.19
12091.00	91.020	342.690	6310.56	5553.99	4810.88	-2841.56	1771208.12	14597279.35	40°11'34.015"N	80°31'53.954"W	5587.40	329.432	0.05	0.04	-0.03
12187.00	90.890	340.240	6308.96	5649.49	4901.88	-2872.07	1771177.63	14597370.31	40°11'34.916"N	80°31'54.341"W	5681.31	329.633	2.56	-0.14	-2.55
12283.00	90.920	336.300	6307.45	5745.36	4991.03	-2907.60	1771142.11	14597459.43	40°11'35.799"N	80°31'54.792"W	5776.21	329.776	4.10	0.03	-4.10
12379.00	90.650	335.900	6306.13	5841.35	5078.79	-2946.49	1771103.23	14597547.16	40°11'36.668"N	80°31'55.288"W	5871.62	329.880	0.50	-0.28	-0.42
12476.00	90.680	334.360	6305.01	5938.33	5166.79	-2987.28	1771062.46	14597635.12	40°11'37.540"N	80°31'55.807"W	5968.21	329.965	1.59	0.03	-1.59
12571.00	90.680	338.840	6303.88	6033.29	5253.95	-3025.00	1771024.76	14597722.24	40°11'38.403"N	80°31'56.287"W	6062.56	330.068	4.72	0.00	4.72
12668.00	90.710	345.460	6302.70	6129.62	5346.22	-3054.72	1770995.05	14597814.48	40°11'39.316"N	80°31'56.664"W	6157.38	330.257	6.82	0.03	6.82
12763.00	90.710	345.070	6301.52	6223.29	5438.09	-3078.88	1770970.90	14597906.31	40°11'40.226"N	80°31'56.969"W	6249.18	330.483	0.41	0.00	-0.41
12860.00	90.800	345.120	6300.24	6318.98	5531.81	-3103.82	1770945.96	14598000.01	40°11'41.153"N	80°31'57.284"W	6343.08	330.704	0.11	0.09	0.05
12956.00	90.650	346.360	6299.03	6413.50	5624.85	-3127.47	1770922.33	14598093.00	40°11'42.074"N	80°31'57.583"W	6435.84	330.926	1.30	-0.16	1.29
13053.00	90.710	346.410	6297.88	6508.81	5719.11	-3150.30	1770899.50	14598187.24	40°11'43.006"N	80°31'57.870"W	6529.37	331.152	0.08	0.06	0.05
13149.00	90.830	347.380	6296.49	6602.98	5812.61	-3172.07	1770877.75	14598280.69	40°11'43.931"N	80°31'58.144"W	6621.81	331.378	1.02	0.13	1.01
13245.00	90.580	346.270	6295.51	6697.16	5906.07	-3193.94	1770855.88	14598374.12	40°11'44.856"N	80°31'58.420"W	6714.38	331.596	1.19	-0.26	-1.16
13341.00	90.710	344.380	6294.33	6791.80	5996.93	-3218.26	1770831.57	14598466.94	40°11'45.775"N	80°31'58.722"W	6807.67	331.788	1.97	0.14	-1.97
13437.00	90.580	345.040	6293.25	6886.61	6091.52	-3243.58	1770806.26	14598559.50	40°11'46.691"N	80°31'59.047"W	6901.26	331.966	0.70	-0.14	0.69
13533.00	90.710	344.070	6292.16	6981.46	6184.05	-3269.14	1770780.71	14598651.99	40°11'47.607"N	80°31'59.370"W	6994.98	332.137	1.02	0.14	-1.01
13629.00	90.770	343.060	6290.92	7076.55	6276.12	-3296.30	1770753.56	14598744.03	40°11'48.518"N	80°31'59.714"W	7089.09	332.291	1.05	0.06	-1.05



Actual Wellpath Report

Sandra Parr BRK 201H AWP Proj: 16440'

Page 7 of 10



REFERENCE WELLPATH IDENTIFICATION

Operator	SOUTHWESTERN ENERGY	Slot	Slot 201H
Area	Brooke County, WV	Well	Sandra Parr BRK 201H
Field	Brooke	Wellbore	Sandra Parr BRK 201H AWB
Facility	Sandra Parr BRK Pad		

WELLPATH DATA (181 stations)

MD [ft]	Inclination [°]	Azimuth [°]	TVD [ft]	Vert Sect [ft]	North [ft]	East [ft]	Grid East [US ft]	Grid North [US ft]	Latitude	Longitude	Closure Dist [ft]	Closure Dir [°]	DLS [°/100ft]	Build Rate [°/100ft]	Turn Rate [°/100ft]
13725.00	90.680	342.390	6289.71	7171.82	6367.78	-3324.80	1770725.07	14598835.65	40°11'49.425"N	80°32'00.075"W	7183.52	332.430	0.70	-0.09	-0.70
13821.00	90.770	343.470	6288.50	7267.05	6459.54	-3352.98	1770696.90	14598927.38	40°11'50.334"N	80°32'00.432"W	7277.92	332.567	1.13	0.09	-1.12
13917.00	90.830	343.890	6287.15	7362.11	6551.66	-3379.95	1770669.94	14599019.47	40°11'51.245"N	80°32'00.773"W	7372.14	332.711	0.44	0.06	0.44
14013.00	90.710	344.480	6285.86	7457.05	6644.02	-3406.12	1770643.79	14599111.79	40°11'52.159"N	80°32'01.104"W	7466.23	332.858	0.63	-0.13	0.61
14109.00	90.740	347.530	6284.65	7551.48	6737.15	-3429.33	1770620.58	14599204.89	40°11'53.081"N	80°32'01.397"W	7559.73	333.023	3.18	0.03	3.18
14205.00	90.650	349.350	6283.49	7645.11	6831.20	-3448.56	1770601.36	14599298.89	40°11'54.011"N	80°32'01.639"W	7652.31	333.214	1.90	-0.09	1.90
14301.00	90.830	344.450	6282.24	7739.24	6924.66	-3470.31	1770579.61	14599392.32	40°11'54.936"N	80°32'01.913"W	7745.58	333.382	5.11	0.19	-5.10
14398.00	90.800	344.770	6280.86	7835.06	7018.17	-3496.05	1770553.88	14599485.80	40°11'55.861"N	80°32'02.238"W	7840.74	333.520	0.33	-0.03	0.33
14493.00	90.880	347.600	6279.46	7928.45	7110.41	-3518.73	1770531.21	14599578.00	40°11'56.774"N	80°32'02.524"W	7933.43	333.671	2.98	0.09	2.98
14589.00	90.890	347.600	6277.97	8022.38	7204.15	-3539.34	1770510.61	14599671.71	40°11'57.701"N	80°32'02.783"W	8026.63	333.835	0.00	0.00	0.00
14684.00	90.740	346.140	6276.62	8115.57	7296.66	-3560.92	1770489.04	14599764.18	40°11'58.617"N	80°32'03.055"W	8119.20	333.987	1.54	-0.16	-1.54
14779.00	90.740	343.820	6275.39	8209.31	7388.40	-3585.54	1770464.43	14599855.88	40°11'59.525"N	80°32'03.366"W	8212.46	334.113	2.44	0.00	-2.44
14874.00	90.460	341.290	6274.40	8303.62	7479.02	-3614.01	1770435.97	14599946.47	40°12'00.422"N	80°32'03.727"W	8306.43	334.209	2.68	-0.29	-2.66
14970.00	90.490	339.580	6273.60	8399.29	7569.47	-3646.16	1770403.83	14600036.88	40°12'01.317"N	80°32'04.135"W	8401.87	334.280	1.78	0.03	-1.78
15064.00	90.400	341.010	6272.87	8492.98	7657.96	-3677.85	1770372.15	14600125.34	40°12'02.193"N	80°32'04.538"W	8495.35	334.347	1.52	-0.10	1.52
15160.00	90.650	343.890	6271.99	8588.30	7749.48	-3706.80	1770343.22	14600216.82	40°12'03.099"N	80°32'04.904"W	8590.39	334.437	3.01	0.26	3.00
15254.00	90.710	346.470	6270.88	8681.00	7840.34	-3730.84	1770319.19	14600307.65	40°12'03.998"N	80°32'05.208"W	8682.74	334.552	2.75	0.06	2.74
15350.00	91.420	346.400	6269.09	8775.30	7933.64	-3753.35	1770296.69	14600400.92	40°12'04.921"N	80°32'05.492"W	8776.69	334.682	0.74	0.74	-0.07
15445.00	90.550	343.720	6267.46	8869.02	8025.41	-3777.84	1770272.21	14600492.65	40°12'05.829"N	80°32'05.801"W	8870.13	334.792	2.97	-0.92	-2.82
15539.00	90.830	343.290	6266.33	8962.14	8115.53	-3804.52	1770245.53	14600582.74	40°12'06.721"N	80°32'06.139"W	8963.05	334.883	0.55	0.30	-0.46
15635.00	90.550	343.510	6265.17	9057.26	8207.52	-3831.95	1770218.12	14600674.70	40°12'07.632"N	80°32'06.486"W	9057.99	334.973	0.37	-0.29	0.23
15730.00	90.550	343.700	6264.26	9151.36	8298.66	-3858.76	1770191.32	14600765.79	40°12'08.534"N	80°32'06.826"W	9151.93	335.062	0.20	0.00	0.20
15825.00	90.580	343.970	6263.32	9245.40	8389.90	-3885.21	1770164.88	14600857.00	40°12'09.437"N	80°32'07.160"W	9245.82	335.152	0.29	0.03	0.28
15920.00	90.710	347.750	6262.25	9338.88	8482.00	-3908.41	1770141.69	14600949.06	40°12'10.348"N	80°32'07.483"W	9339.16	335.260	3.98	0.14	3.98
16015.00	90.580	349.620	6261.18	9431.45	8575.14	-3927.05	1770123.05	14601042.17	40°12'11.269"N	80°32'07.687"W	9431.58	335.394	1.97	-0.14	1.97
16111.00	90.580	348.680	6260.21	9524.81	8669.42	-3945.12	1770104.99	14601136.41	40°12'12.202"N	80°32'07.914"W	9524.85	335.532	0.98	0.00	-0.98
16207.00	90.520	344.180	6259.29	9619.10	8762.71	-3967.63	1770082.48	14601229.67	40°12'13.125"N	80°32'08.198"W	9619.11	335.640	4.69	-0.06	-4.69
16303.00	90.460	341.920	6258.47	9714.30	8854.53	-3995.62	1770054.51	14601321.45	40°12'14.034"N	80°32'08.552"W	9714.30	335.713	2.35	-0.06	-2.35
16398.00	90.520	339.960	6257.66	9808.90	8944.31	-4026.64	1770023.50	14601411.20	40°12'14.923"N	80°32'08.946"W	9808.90	335.763	2.06	0.06	-2.06
16415.00	90.430	339.610	6257.52	9825.85	8960.27	-4032.51	1770017.63	14601427.15	40°12'15.081"N	80°32'09.020"W	9825.86	335.770	2.13	-0.53	-2.06



REFERENCE WELLPATH IDENTIFICATION			
Operator	SOUTHWESTERN ENERGY	Slot	Slot 201H
Area	Brooke County, WV	Well	Sandra Parr BRK 201H
Field	Brooke	Wellbore	Sandra Parr BRK 201H AWP
Facility	Sandra Parr BRK Pad		

WELLPATH DATA (181 stations)															
MD	Inclination	Azimuth	TVD	Vert Sect	North	East	Grid East	Grid North	Latitude	Longitude	Closure Dist	Closure Dir	DLS	Build Rate	Turn Rate
[ft]	[°]	[°]	[ft]	[ft]	[ft]	[ft]	[US ft]	[US ft]	[°]	[°]	[ft]	[°]	[°/100ft]	[°/100ft]	[°/100ft]
16440.00	90.430	339.610	6257.33	9850.79	8983.70	-4041.22	1770008.92	14601450.57	40°12'15.313"N	80°32'09.131"W	9850.80	335.780	0.00	0.00	0.00

HOLE & CASING SECTIONS - Ref Wellbore: Sandra Parr BRK 201H AWP Ref Wellpath: Sandra Parr BRK 201H AWP Proj: 16440'											
String/Diameter	Start MD	End MD	Interval	Start TVD	End TVD	Start N/S	Start E/W	End N/S	End E/W		
	[ft]	[ft]	[ft]	[ft]	[ft]	[ft]	[ft]	[ft]	[ft]		[ft]
17.5in Open Hole	26.00	471.00	445.00	26.00	470.99	0.00	0.00	2.38	-1.04		
13.375in Casing Surface	26.00	471.00	445.00	26.00	470.99	0.00	0.00	2.38	-1.04		
12.25in Open Hole	471.00	2056.00	1585.00	470.99	2038.27	2.38	-1.04	-109.48	-162.89		
9.625in Casing Intermediate	26.00	2056.00	2030.00	26.00	2038.27	0.00	0.00	-109.48	-162.89		
8.75in Open Hole	2056.00	5602.00	3546.00	2038.27	5417.21	-109.48	-162.89	-667.71	-1068.33		
8.5in Open Hole	5602.00	16440.00	10838.00	5417.21	6257.33	-667.71	-1068.33	8983.70	-4041.22		
5.5in Casing Production	26.00	16440.00	16414.00	26.00	6257.33	0.00	0.00	8983.70	-4041.22		

TARGETS									
Name	TVD	North	East	Grid East	Grid North	Latitude	Longitude	Shape	
	[ft]	[ft]	[ft]	[US ft]	[US ft]	[°]	[°]		
Sandra Parr BRK 201H BHL Rev-2	6261.10	8969.65	-4049.91	1770000.24	14601436.53	40°12'15.174"N	80°32'09.244"W	point	
Sandra Parr BRK 201H LP Rev-2	6426.00	-40.13	-1443.89	1772605.26	14592430.19	40°10'46.005"N	80°31'36.277"W	point	

REFERENCE WELLPATH IDENTIFICATION			
Operator	SOUTHWESTERN ENERGY	Slot	Slot 201H
Area	Brooke County, WV	Well	Sandra Parr BRK 201H
Field	Brooke	Wellbore	Sandra Parr BRK 201H AWB
Facility	Sandra Parr BRK Pad		

WELLPATH COMPOSITION - Ref Wellbore: Sandra Parr BRK 201H AWB				Ref Wellpath: Sandra Parr BRK 201H AWP Proj: 16440'	
Start MD	End MD	Positional Uncertainty Model	Log Name/Comment	Wellbore	
[ft]	[ft]				
26.00	440.00	OWSG MWD rev2 + HRGM	01 Premier MWD <17 1/2"> (200'-440')		Sandra Parr BRK 201H AWB
440.00	1999.49	OWSG MWD rev2 + HRGM	02 Premier MWD <12 1/4"> (517'-1999.49')		Sandra Parr BRK 201H AWB
1999.49	5602.19	OWSG MWD rev2 + HRGM	03 Premier MWD <8 3/4"> (2074.01'-5602.19')		Sandra Parr BRK 201H AWB
5602.19	16415.00	BHI AutoTrak Curve (Short)	04 BH AT Curve <8 1/2"> (5652'-16415')		Sandra Parr BRK 201H AWB
16415.00	16440.00	Blind Drilling (std)	Projection to bit		Sandra Parr BRK 201H AWB



REFERENCE WELLPATH IDENTIFICATION

Operator	SOUTHWESTERN ENERGY	Slot	Slot 201H
Area	Brooke County, WV	Well	Sandra Parr BRK 201H
Field	Brooke	Wellbore	Sandra Parr BRK 201H AWB
Facility	Sandra Parr BRK Pad		

COMMENTS

Wellpath general comments
 API: 47-009-00251-0000
 BH Job #: 109653631
 Rig: SDC 42
 Duration: 02/13/2019 - 02/17/2019