

SOUTHWESTERN ENERGY



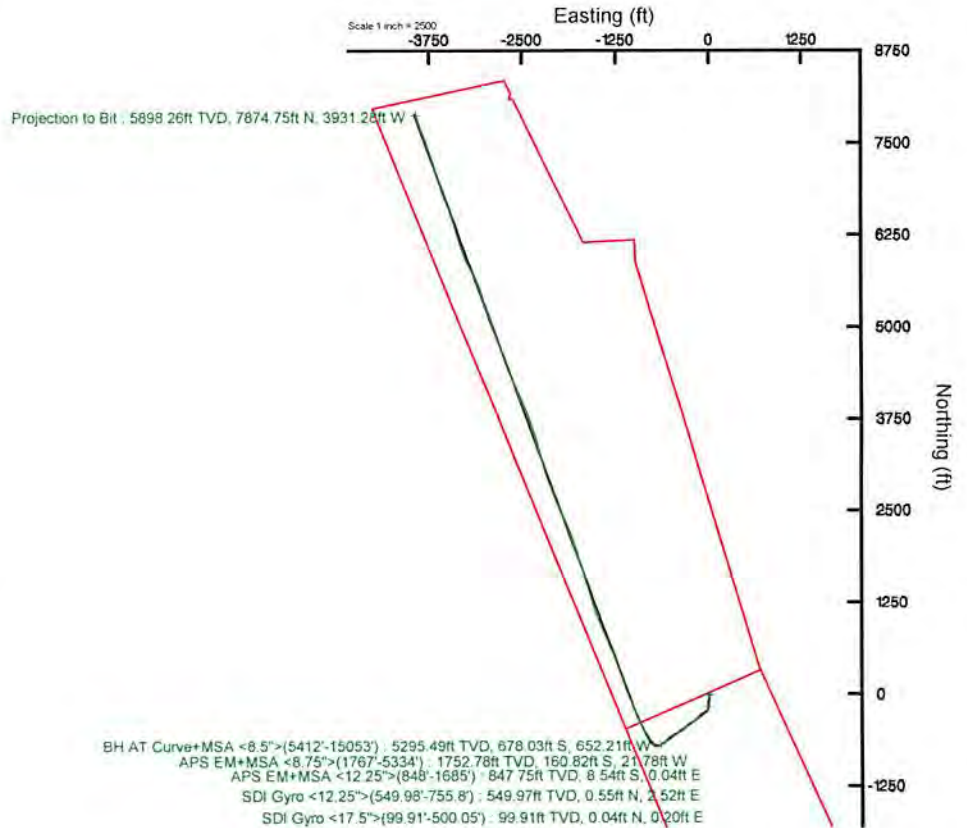
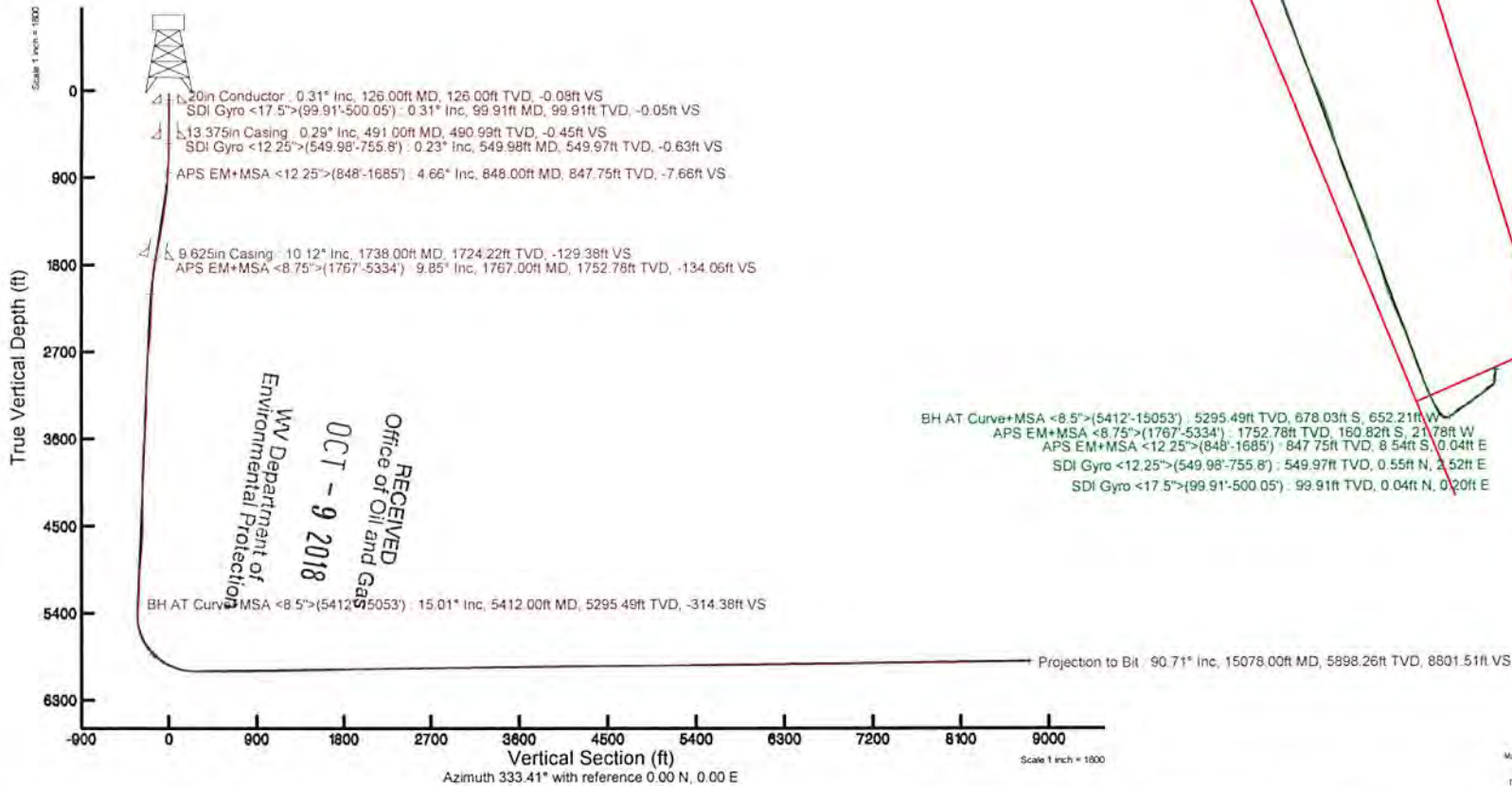
Location: Brooke County, WV Slot: Slot #201H
 Field: Brooke Well: Thomas Parkinson BRK 201H
 Facility: Thomas Parkinson BRK Pad Wellbore: Thomas Parkinson BRK 201H PWB

Plot reference wellpath is Thomas Parkinson BRK 201H PWP Rev-A.0	Grid System: NAD83 / UTM Zone 17 North, US feet
True vertical depths are referenced to SDC 46 (RKB)	* = Wellpath was transformed from a different geodetic datum
Measured depths are referenced to SDC 46 (RKB)	North Reference: Grid north
SDC 46 (RKB) to Mean Sea Level: 1186.9 feet	Scale: True distance
Mean Sea Level to Ground level (At Slot: Slot #201H): -1160.9 feet	Depths are in feet
Coordinates are in feet referenced to Slot	Created by: thomsuzc on 2018-04-11
	Database: WA_Pennsylvania

Location Information						
Facility Name		Grid East (US ft)	Grid North (US ft)	Latitude	Longitude	
Thomas Parkinson BRK Pad		1762113.450	14604537.070	40°12'46.220"N	80°33'50.731"W	
Slot	Local N (ft)	Local E (ft)	Grid East (US ft)	Grid North (US ft)	Latitude	Longitude
Slot #201H	-35.25	0.27	1762113.716	14604501.830	40°12'45.872"N	80°33'50.730"W
SDC 46 (RKB) to Ground level (At Slot: Slot #201H)				26ft		
Mean Sea Level to Ground level (At Slot: Slot #201H)				-1160.9ft		
SDC 46 (RKB) to Mean Sea Level				1186.9ft		



API: 47-009-00235-0000
 BH Job #: 9067027
 Rig: SDC 46
 Duration: 03/24/2018 - 04/04/2018



RECEIVED
 Office of Oil and Gas
 OCT - 9 2018
 WV Department of
 Environmental Protection



REFERENCE WELLPATH IDENTIFICATION			
Operator	SOUTHWESTERN ENERGY	Slot	Slot #201H
Area	Brooke County, WV	Well	Thomas Parkinson BRK 201H
Field	Brooke	Wellbore	Thomas Parkinson BRK 201H AWB
Facility	Thomas Parkinson BRK Pad		

REPORT SETUP INFORMATION			
Projection System	NAD83 / UTM Zone 17 North, US feet	Software System	WellArchitect® 5.0
North Reference	Grid	User	Thomsuzc
Scale	0.999617	Report Generated	4/11/2018 at 11:49:20 AM
Convergence at slot	0.29° East	Database/Source file	WA_Pennsylvania/Thomas_Parkinson_BRK_201H_AWP_Proj__15078_MD.xml

WELLPATH LOCATION						
	Local coordinates		Grid coordinates		Geographic coordinates	
	North[ft]	East[ft]	Easting[US ft]	Northing[US ft]	Latitude	Longitude
Slot Location	-35.25	0.27	1762113.72	14604501.83	40°12'45.872"N	80°33'50.730"W
Facility Reference Pt			1762113.45	14604537.07	40°12'46.220"N	80°33'50.731"W
Field Reference Pt			0.00	0.00	0°00'00.000"	85°29'19.478"W

WELLPATH DATUM			
Calculation method	Minimum curvature	SDC 46 (RKB) to Facility Vertical Datum	1186.90ft
Horizontal Reference Pt	Slot	SDC 46 (RKB) to Mean Sea Level	1186.90ft
Vertical Reference Pt	SDC 46 (RKB)	SDC 46 (RKB) to Ground Level at Slot (Slot #201H)	26.00ft
MD Reference Pt	SDC 46 (RKB)	Section Origin	N 0.00, E 0.00 ft
Field Vertical Reference	Mean Sea Level	Section Azimuth	333.41°

RECEIVED
 Office of Oil and Gas
 OCT - 9 2018
 WV Department of
 Environmental Protection

Actual Wellpath Report

Thomas Parkinson BRK 201H AWP Proj: 15078 MD

Page 2 of 10



REFERENCE WELLPATH IDENTIFICATION

Operator	SOUTHWESTERN ENERGY	Slot	Slot #201H
Area	Brooke County, WV	Well	Thomas Parkinson BRK 201H
Field	Brooke	Wellbore	Thomas Parkinson BRK 201H AWB
Facility	Thomas Parkinson BRK Pad		

WELLPATH DATA (184 stations) † = interpolated/extrapolated station															
MD	Inclination	Azimuth	TVD	Vert Sect	North	East	Grid East	Grid North	Latitude	Longitude	Closure Dist	Closure Dir	DLS	Build Rate	Turn Rate
(ft)	(°)	(°)	(ft)	(ft)	(ft)	(ft)	(US ft)	(US ft)	(ft)	(ft)	(ft)	(°)	(°/100ft)	(°/100ft)	(°/100ft)
0.00†	0.00	78.220	0.00	0.00	0.00	0.00	1762113.72	14604501.83	40°12'45.872"N	80°33'50.730"W	0.00	0.00	0.00	0.00	0.00
26.00	0.000	78.220	26.00	0.00	0.00	0.00	1762113.72	14604501.83	40°12'45.872"N	80°33'50.730"W	0.00	0.00	0.00	0.00	0.00
99.91	0.310	78.220	99.91	-0.05	0.04	0.20	1762113.91	14604501.87	40°12'45.872"N	80°33'50.727"W	0.20	0.20	78.220	0.42	105.83
200.03	0.310	69.380	200.03	-0.15	0.19	0.71	1762114.43	14604502.02	40°12'45.874"N	80°33'50.721"W	0.74	0.74	74.994	0.05	-8.83
300.04	0.410	64.730	300.04	-0.18	0.44	1.29	1762115.01	14604502.27	40°12'45.876"N	80°33'50.713"W	1.36	1.36	71.201	0.10	-4.65
400.41	0.250	81.480	400.40	-0.26	0.63	1.83	1762115.55	14604502.46	40°12'45.878"N	80°33'50.706"W	1.94	1.94	71.160	0.18	-16.69
500.05	0.300	96.580	500.04	-0.47	0.63	2.31	1762116.02	14604502.46	40°12'45.878"N	80°33'50.700"W	2.39	2.39	74.779	0.09	15.15
549.98	0.230	128.160	549.97	-0.63	0.55	2.52	1762116.23	14604502.38	40°12'45.877"N	80°33'50.698"W	2.57	2.57	77.651	0.32	63.25
567.65	0.350	116.530	567.64	-0.71	0.50	2.59	1762116.31	14604502.33	40°12'45.877"N	80°33'50.697"W	2.64	2.64	78.980	0.75	-65.82
598.99	0.340	128.840	598.98	-0.87	0.40	2.75	1762116.47	14604502.23	40°12'45.876"N	80°33'50.694"W	2.78	2.78	81.730	0.23	38.06
649.80	0.720	180.240	649.79	-1.29	-0.01	2.87	1762116.58	14604501.82	40°12'45.872"N	80°33'50.693"W	2.87	2.87	90.105	1.15	103.19
699.99	1.710	195.830	699.97	-2.12	-1.04	2.66	1762116.38	14604500.79	40°12'45.862"N	80°33'50.696"W	2.86	2.86	111.355	2.06	31.06
755.80	2.610	198.520	755.74	-3.63	-3.05	2.03	1762115.75	14604498.78	80°33'50.704"N	80°33'50.704"W	3.66	3.66	146.303	1.62	4.82
848.00	4.660	200.650	847.75	-7.66	-8.54	0.04	1762113.76	14604493.29	40°12'45.788"N	80°33'50.730"W	8.54	8.54	179.704	2.23	2.31
900.00	5.590	201.930	899.54	-10.77	-12.87	-1.65	1762112.07	14604488.97	40°12'45.745"N	80°33'50.752"W	12.97	12.97	187.292	1.80	1.79
974.00	6.900	205.760	973.10	-15.87	-20.22	-4.92	1762108.79	14604481.62	40°12'45.672"N	80°33'50.795"W	20.81	20.81	193.691	1.86	5.18
1066.00	8.870	201.890	1064.23	-23.95	-31.78	-9.97	1762103.75	14604470.07	40°12'45.558"N	80°33'50.861"W	33.30	33.30	197.422	2.22	-4.21
1159.00	9.000	194.700	1156.10	-34.17	-45.47	-14.49	1762099.23	14604456.38	40°12'45.423"N	80°33'50.920"W	47.72	47.72	197.678	1.21	-7.73
1252.00	9.510	192.080	1247.89	-45.63	-60.01	-17.94	1762095.78	14604441.84	40°12'45.280"N	80°33'50.965"W	62.64	62.64	196.647	0.71	-2.82
1345.00	11.420	188.370	1339.34	-59.18	-76.64	-20.89	1762092.83	14604425.22	40°12'45.116"N	80°33'51.004"W	79.43	79.43	195.249	2.18	-3.99
1437.00	12.490	184.050	1429.34	-75.20	-95.57	-22.92	1762090.80	14604406.29	40°12'44.929"N	80°33'51.031"W	98.28	98.28	193.486	1.52	-4.70
1530.00	12.120	179.880	1520.21	-92.60	-115.37	-23.61	1762090.11	14604386.51	40°12'44.733"N	80°33'51.042"W	117.76	117.76	191.566	1.03	-4.48
1623.00	11.510	177.900	1611.24	-109.78	-134.40	-23.25	1762090.47	14604367.48	40°12'44.545"N	80°33'51.038"W	136.40	136.40	189.815	0.79	-2.13
1685.00	10.620	177.790	1672.09	-120.61	-146.29	-22.80	1762090.92	14604355.59	40°12'44.427"N	80°33'51.033"W	148.06	148.06	188.860	1.44	-0.18
1767.00	9.850	173.990	1752.78	-134.06	-160.82	-21.78	1762091.95	14604341.07	40°12'44.284"N	80°33'51.021"W	162.29	162.29	187.712	1.25	-4.63
1814.00	9.340	172.650	1799.12	-141.43	-168.60	-20.87	1762092.86	14604333.29	40°12'44.207"N	80°33'51.010"W	169.89	169.89	187.056	1.18	-2.85
1907.00	8.090	184.120	1891.05	-154.18	-182.61	-20.37	1762093.35	14604319.29	40°12'44.068"N	80°33'51.004"W	183.75	183.75	186.366	2.30	12.33
2000.00	9.550	213.590	1963.00	-163.65	-195.58	-25.11	1762088.61	14604306.33	40°12'43.941"N	80°33'51.066"W	197.18	197.18	187.318	5.04	31.69
2093.00	12.810	227.780	2024.24	-170.27	-208.94	-37.02	1762076.71	14604292.97	40°12'43.809"N	80°33'51.220"W	212.19	212.19	190.049	4.56	15.26
2185.00	11.860	228.270	2125.11	-175.48	-222.08	-51.63	1762062.10	14604279.83	40°12'43.680"N	80°33'51.410"W	228.01	228.01	193.088	1.04	0.53

 RECEIVED
 Office of Oil and Gas
 DEPARTMENT OF Environmental Protection
 OCT - 6 - 2018



Actual Wellpath Report

Thomas Parkinson BRK 201H AWP Proj: 15078'MD
Page 3 of 10



REFERENCE WELLPATH IDENTIFICATION			
Operator	SOUTHWESTERN ENERGY	Slot	Slot #201H
Area	Brooke County, WV	Well	Thomas Parkinson BRK 201H
Field	Brooke	Wellbore	Thomas Parkinson BRK 201H AWB
Facility	Thomas Parkinson BRK Pad		

WELLPATH DATA (184 stations)															
MD	Inclination	Azimuth	TVD	Vert Sect	North	East	Grid East	Grid North	Latitude	Longitude	Closure Dist	Closure Dir	DLS	Build Rate	Turn Rate
[ft]	[°]	[°]	[ft]	[ft]	[ft]	[ft]	[US ft]	[US ft]			[ft]	[°]	[°/100ft]	[°/100ft]	[°/100ft]
2278.00	12.190	233.250	2255.08	-179.71	-234.32	-66.63	1762047.11	14604267.60	40°12'43.560"N	80°33'51.604"W	243.61	195.874	1.17	0.35	5.35
2371.00	15.000	240.510	2345.47	-182.05	-246.12	-84.98	1762028.77	14604255.80	40°12'43.444"N	80°33'51.841"W	260.38	199.049	3.53	3.02	7.81
2463.00	17.180	238.060	2433.86	-183.92	-259.17	-106.88	1762006.88	14604242.76	40°12'43.316"N	80°33'52.124"W	280.34	202.410	2.48	2.37	-2.66
2556.00	15.980	225.070	2523.02	-189.23	-275.49	-127.60	1761986.16	14604226.45	40°12'43.156"N	80°33'52.392"W	303.60	204.853	4.18	-1.29	-13.97
2648.00	13.470	206.970	2612.04	-199.59	-293.99	-141.44	1761972.33	14604207.95	40°12'42.974"N	80°33'52.572"W	326.24	205.692	5.66	-2.73	-19.67
2741.00	11.440	208.850	2702.85	-211.26	-311.73	-150.80	1761962.97	14604190.22	40°12'42.799"N	80°33'52.693"W	346.29	205.816	2.23	-2.18	2.02
2834.00	9.190	221.240	2794.35	-219.29	-325.39	-160.15	1761953.63	14604176.56	40°12'42.664"N	80°33'52.815"W	362.67	206.205	3.38	-2.42	13.32
2927.00	10.030	231.840	2886.05	-223.72	-335.98	-171.41	1761942.37	14604165.98	40°12'42.560"N	80°33'52.961"W	377.18	207.030	2.10	0.90	11.40
3019.00	12.550	234.550	2976.26	-226.87	-346.73	-185.86	1761927.93	14604155.23	40°12'42.455"N	80°33'53.148"W	393.40	208.193	2.80	2.74	2.95
3112.00	14.470	243.340	3066.70	-228.44	-357.81	-204.48	1761909.32	14604144.16	40°12'42.346"N	80°33'53.388"W	412.11	209.747	3.02	2.06	9.45
3205.00	14.570	243.390	3156.73	-228.45	-368.26	-225.32	1761888.48	14604133.71	40°12'42.244"N	80°33'53.658"W	431.72	211.460	0.11	0.11	0.05
3297.00	15.290	242.000	3245.62	-228.76	-379.14	-246.38	1761867.43	14604122.84	40°12'42.137"N	80°33'53.930"W	452.16	213.017	0.87	0.78	-1.51
3390.00	16.820	237.840	3334.99	-230.37	-392.06	-268.60	1761845.22	14604109.92	40°12'42.011"N	80°33'54.217"W	475.24	214.415	2.06	1.65	-4.47
3483.00	17.310	229.220	3423.91	-235.06	-408.26	-290.47	1761823.36	14604093.73	40°12'41.852"N	80°33'54.500"W	501.05	215.431	2.77	0.53	-9.27
3576.00	14.620	220.930	3513.33	-242.95	-426.17	-308.64	1761805.20	14604075.83	40°12'41.676"N	80°33'54.735"W	526.19	215.913	3.79	-2.89	-8.91
3668.00	10.400	215.790	3603.13	-251.24	-441.68	-321.11	1761792.73	14604060.32	40°12'41.523"N	80°33'54.897"W	546.07	216.018	4.74	-4.59	-5.59
3761.00	8.280	221.200	3694.89	-257.66	-453.53	-330.43	1761783.41	14604048.47	40°12'41.406"N	80°33'55.018"W	561.14	216.076	2.46	-2.28	5.82
3854.00	8.990	226.650	3786.84	-262.29	-463.56	-340.12	1761773.72	14604038.45	40°12'41.308"N	80°33'55.143"W	574.95	216.268	1.16	0.76	5.86
3947.00	9.480	228.940	3878.63	-266.30	-473.58	-351.18	1761762.67	14604028.43	40°12'41.209"N	80°33'55.286"W	589.58	216.559	0.66	0.53	2.46
4039.00	11.080	233.250	3969.15	-269.75	-483.84	-363.98	1761749.88	14604018.17	40°12'41.108"N	80°33'55.452"W	605.46	216.953	1.93	1.74	4.68
4132.00	13.290	241.930	4060.06	-271.60	-494.22	-380.58	1761733.29	14604007.80	40°12'41.007"N	80°33'55.667"W	623.77	217.598	3.08	2.38	9.33
4225.00	12.860	242.340	4150.65	-272.07	-504.06	-399.17	1761714.69	14603997.97	40°12'40.910"N	80°33'55.907"W	642.97	218.376	0.47	-0.46	0.44
4318.00	12.830	243.540	4241.32	-272.24	-513.46	-417.59	1761696.29	14603988.56	40°12'40.818"N	80°33'56.145"W	661.83	219.120	0.29	-0.03	1.29
4410.00	14.170	246.860	4330.78	-271.54	-522.44	-437.09	1761676.80	14603979.59	40°12'40.731"N	80°33'56.397"W	681.17	219.917	1.68	1.46	3.61
4503.00	16.280	247.410	4420.51	-269.95	-531.92	-459.59	1761654.30	14603970.11	40°12'40.638"N	80°33'56.687"W	702.97	220.828	2.27	2.27	0.59
4596.00	17.770	242.060	4509.44	-269.37	-543.58	-484.17	1761629.74	14603958.46	40°12'40.524"N	80°33'57.005"W	727.94	221.691	2.32	1.60	-5.75
4688.00	19.610	238.180	4596.59	-271.11	-558.30	-509.69	1761604.22	14603943.74	40°12'40.380"N	80°33'57.335"W	755.97	222.394	2.41	2.00	-4.22
4777.00	17.920	232.630	4680.86	-275.03	-574.49	-533.27	1761580.65	14603927.56	40°12'40.221"N	80°33'57.640"W	783.84	222.869	2.76	-1.90	-6.24
4870.00	15.380	220.010	4769.98	-282.61	-592.63	-552.58	1761561.35	14603909.43	40°12'40.043"N	80°33'57.890"W	810.28	222.997	4.74	-2.73	-13.57
4963.00	13.080	218.190	4860.12	-291.99	-610.35	-567.01	1761546.92	14603891.72	40°12'39.868"N	80°33'58.077"W	833.08	222.892	2.52	-2.47	-1.96

WV Department of Environmental Protection

0109 - 9 2018

RECEIVED
Office of Oil and Gas



Actual Wellpath Report

Thomas Parkinson BRK 201H AWP Proj: 15078'MD
Page 4 of 10



REFERENCE WELLPATH IDENTIFICATION			
Operator	SOUTHWESTERN ENERGY	Slot	Slot #201H
Area	Brooke County, WV	Well	Thomas Parkinson BRK 201H
Field	Brooke	Wellbore	Thomas Parkinson BRK 201H AWB
Facility	Thomas Parkinson BRK Pad		

WELLPATH DATA (184 stations)															
MD [ft]	Inclination [°]	Azimuth [°]	TVD [ft]	Vert Sect [ft]	North [ft]	East [ft]	Grid East [US ft]	Grid North [US ft]	Latitude	Longitude	Closure Dist [ft]	Closure Dir [°]	DLS [°/100ft]	Build Rate [°/100ft]	Turn Rate [°/100ft]
5056.00	12.280	225.770	4950.86	-299.48	-625.52	-580.61	1761533.33	14603876.55	40°12'39.719"N	80°33'58.253"W	853.45	222.868	1.98	-0.86	8.15
5149.00	13.330	236.280	5041.56	-303.81	-638.37	-596.61	1761517.33	14603863.71	40°12'39.593"N	80°33'58.460"W	873.76	223.064	2.74	1.13	11.30
5241.00	15.490	238.740	5130.66	-306.12	-650.63	-615.94	1761498.01	14603851.45	40°12'39.472"N	80°33'58.710"W	895.94	223.431	2.44	2.35	2.67
5334.00	15.630	231.850	5220.26	-309.64	-664.82	-636.41	1761477.55	14603837.27	40°12'39.333"N	80°33'58.975"W	920.33	223.749	1.99	0.15	-7.41
5412.00	15.010	228.300	5295.49	-314.38	-678.03	-652.21	1761461.75	14603824.06	40°12'39.203"N	80°33'59.179"W	940.80	223.888	1.44	-0.79	-4.55
5505.00	15.420	232.720	5385.23	-319.82	-693.53	-671.04	1761442.93	14603808.57	40°12'39.051"N	80°33'59.423"W	965.03	224.056	1.32	0.44	4.75
5551.00	15.580	243.350	5429.57	-320.96	-700.01	-681.43	1761432.54	14603802.09	40°12'38.988"N	80°33'59.557"W	976.91	224.230	6.18	0.35	23.11
5598.00	15.860	255.700	5474.82	-319.60	-704.43	-693.30	1761420.68	14603797.68	40°12'38.945"N	80°33'59.711"W	988.37	224.544	7.13	0.60	26.28
5644.00	18.390	267.650	5518.79	-315.28	-706.28	-706.65	1761407.34	14603795.83	40°12'38.927"N	80°33'59.883"W	999.09	225.015	9.39	5.50	25.98
5690.00	18.660	279.060	5562.42	-308.01	-705.41	-721.17	1761392.82	14603796.69	40°12'38.936"N	80°34'00.070"W	1008.81	225.633	7.89	0.59	24.80
5737.00	21.720	288.240	5606.54	-297.49	-701.51	-736.86	1761377.14	14603800.59	40°12'38.975"N	80°34'00.272"W	1017.39	226.408	9.35	6.51	19.53
5783.00	26.040	299.490	5648.62	-283.09	-693.86	-753.75	1761360.25	14603808.23	40°12'39.052"N	80°34'00.489"W	1024.50	227.369	13.61	9.39	24.46
5830.00	29.980	310.090	5690.13	-263.73	-681.21	-771.73	1761342.28	14603820.88	40°12'39.178"N	80°34'00.720"W	1029.38	228.565	13.48	8.38	22.55
5876.00	32.810	319.840	5729.42	-241.04	-664.27	-788.58	1761325.44	14603837.82	40°12'39.346"N	80°34'00.936"W	1031.07	229.890	12.62	6.15	21.20
5922.00	37.180	327.240	5767.11	-215.08	-643.04	-804.15	1761309.87	14603859.04	40°12'39.557"N	80°34'01.136"W	1029.64	231.353	13.23	9.50	16.09
5969.00	41.300	331.180	5803.51	-185.45	-617.49	-819.32	1761294.71	14603884.58	40°12'39.810"N	80°34'01.330"W	1025.96	232.996	10.24	8.77	8.38
6015.00	46.190	334.260	5836.73	-153.66	-589.22	-833.86	1761280.18	14603912.84	40°12'40.090"N	80°34'01.515"W	1021.03	234.754	11.59	10.63	6.70
6062.00	50.890	335.610	5867.84	-118.46	-557.32	-848.76	1761265.28	14603944.73	40°12'40.406"N	80°34'01.705"W	1015.38	236.710	10.23	10.00	2.87
6108.00	56.240	336.570	5895.15	-81.51	-523.49	-863.75	1761250.30	14603978.54	40°12'40.741"N	80°34'01.896"W	1010.00	238.781	11.75	11.63	2.09
6154.00	60.680	336.360	5919.21	-42.37	-487.56	-879.40	1761234.66	14604014.46	40°12'41.097"N	80°34'02.096"W	1005.51	240.995	9.66	9.65	-0.46
6200.00	66.440	335.770	5939.68	-1.24	-449.93	-896.11	1761217.95	14604052.07	40°12'41.469"N	80°34'02.309"W	1002.72	243.339	12.57	12.52	-1.28
6247.00	69.360	334.110	5957.36	42.28	-410.49	-914.56	1761199.51	14604091.49	40°12'41.860"N	80°34'02.544"W	1002.46	245.827	7.02	6.21	-3.53
6293.00	74.290	335.290	5971.71	85.96	-370.99	-933.22	1761180.85	14604130.98	40°12'42.251"N	80°34'02.782"W	1004.26	248.320	10.99	10.72	2.57
6340.00	77.810	335.720	5983.04	131.54	-329.49	-952.13	1761161.95	14604172.47	40°12'42.662"N	80°34'03.023"W	1007.53	250.912	7.54	7.49	0.91
6386.00	82.090	336.270	5991.06	176.77	-288.12	-970.55	1761143.54	14604213.82	40°12'43.072"N	80°34'03.258"W	1012.41	253.466	9.38	9.30	1.20
6433.00	85.840	336.580	5996.00	223.44	-245.29	-989.24	1761124.86	14604256.63	40°12'43.496"N	80°34'03.496"W	1019.20	256.074	8.01	7.98	0.66
6479.00	88.460	337.180	5998.29	269.30	-203.04	-1007.28	1761106.83	14604298.87	40°12'43.914"N	80°34'03.726"W	1027.54	258.603	5.84	5.70	1.30
6525.00	90.650	337.280	5998.65	315.19	-160.63	-1025.08	1761089.03	14604341.26	40°12'44.334"N	80°34'03.953"W	1037.59	261.094	4.77	4.76	0.22
6618.00	89.940	338.540	5998.17	407.90	-74.46	-1060.05	1761054.07	14604427.40	40°12'45.187"N	80°34'04.398"W	1062.66	265.982	1.56	-0.76	1.35
6711.00	89.970	340.220	5998.24	500.39	12.58	-1092.80	1761021.33	14604514.40	40°12'46.049"N	80°34'04.815"W	1092.87	270.660	1.81	0.03	1.81

WV Department of Environmental Protection

8102 6 - 100

RECEIVED
Office of Oil and Gas



Actual Wellpath Report

Thomas Parkinson BRK 201H AWP Proj: 15078'MD
Page 5 of 10



REFERENCE WELLPATH IDENTIFICATION			
Operator	SOUTHWESTERN ENERGY	Slot	Slot #201H
Area	Brooke County, WV	Well	Thomas Parkinson BRK 201H
Field	Brooke	Wellbore	Thomas Parkinson BRK 201H AWP
Facility	Thomas Parkinson BRK Pad		

WELLPATH DATA (184 stations)															
MD [ft]	Inclination [°]	Azimuth [°]	TVD [ft]	Vert Sect [ft]	North [ft]	East [ft]	Grid East [US ft]	Grid North [US ft]	Latitude	Longitude	Closure Dist [ft]	Closure Dir [°]	DLS [°/100ft]	Build Rate [°/100ft]	Turn Rate [°/100ft]
6803.00	89.480	340.180	5998.68	591.74	99.14	-1123.97	1760990.18	14604600.93	40°12'46.906"N	80°34'05.211"W	1128.33	275.041	0.53	-0.53	-0.04
6896.00	89.510	340.210	5999.50	684.09	186.64	-1155.47	1760958.69	14604688.39	40°12'47.772"N	80°34'05.612"W	1170.45	279.175	0.05	0.03	0.03
6942.00	90.250	340.230	5999.60	729.76	229.92	-1171.04	1760943.13	14604731.66	40°12'48.201"N	80°34'05.810"W	1193.40	281.108	1.61	1.61	0.04
6989.00	90.280	339.630	5999.38	776.46	274.07	-1187.17	1760927.00	14604775.79	40°12'48.638"N	80°34'06.015"W	1218.39	282.999	1.28	0.06	-1.28
7035.00	90.250	340.580	5999.17	822.14	317.32	-1202.82	1760911.36	14604819.03	40°12'49.066"N	80°34'06.214"W	1243.98	284.779	2.07	-0.07	2.07
7081.00	91.050	340.950	5998.65	867.76	360.75	-1217.98	1760896.21	14604862.44	40°12'49.496"N	80°34'06.407"W	1270.28	286.499	1.92	1.74	0.80
7128.00	91.050	340.610	5997.79	914.37	405.12	-1233.45	1760880.74	14604906.80	40°12'49.935"N	80°34'06.603"W	1298.27	288.183	0.72	0.00	-0.72
7174.00	91.020	339.980	5996.96	960.03	448.42	-1248.95	1760865.24	14604950.08	40°12'50.364"N	80°34'06.800"W	1327.01	289.750	1.37	-0.07	-1.37
7267.00	91.020	338.090	5995.30	1052.56	535.25	-1282.22	1760831.99	14605036.87	40°12'51.223"N	80°34'07.224"W	1389.45	292.657	2.03	0.00	-2.03
7359.00	91.020	337.290	5993.66	1144.29	620.34	-1317.14	1760797.08	14605121.94	40°12'52.066"N	80°34'07.669"W	1455.92	295.219	0.87	0.00	-0.87
7452.00	90.980	337.200	5992.04	1237.07	706.09	-1353.11	1760761.13	14605207.65	40°12'52.915"N	80°34'08.127"W	1526.26	297.557	0.11	-0.04	-0.10
7545.00	91.050	335.830	5990.39	1329.91	791.37	-1390.16	1760724.09	14605292.90	40°12'53.759"N	80°34'08.599"W	1599.63	299.651	1.47	0.08	-1.47
7638.00	91.080	337.410	5988.66	1422.75	876.72	-1427.06	1760687.21	14605378.21	40°12'54.604"N	80°34'09.069"W	1674.85	301.565	1.70	0.03	1.70
7731.00	90.990	337.620	5986.98	1515.49	962.64	-1462.62	1760651.66	14605464.10	40°12'55.455"N	80°34'09.522"W	1750.98	303.351	0.25	-0.10	0.23
7823.00	91.080	338.390	5985.32	1607.18	1047.93	-1497.07	1760617.22	14605549.35	40°12'56.300"N	80°34'09.961"W	1827.39	304.991	0.84	0.10	0.84
7916.00	91.660	342.260	5983.10	1699.46	1135.45	-1528.37	1760585.94	14605636.85	40°12'57.166"N	80°34'10.359"W	1903.99	306.609	4.21	0.62	4.16
8009.00	91.750	345.210	5980.33	1790.91	1224.68	-1554.40	1760559.91	14605726.04	40°12'58.049"N	80°34'10.689"W	1978.89	308.234	3.17	0.10	3.17
8101.00	91.880	344.000	5977.41	1881.11	1313.34	-1578.81	1760535.51	14605814.66	40°12'58.926"N	80°34'10.998"W	2053.65	309.755	1.32	0.14	-1.32
8194.00	91.480	343.240	5974.69	1972.60	1402.52	-1605.03	1760509.31	14605903.81	40°12'59.809"N	80°34'11.330"W	2131.47	311.148	0.92	-0.43	-0.82
8287.00	90.770	342.810	5972.86	2064.27	1491.45	-1632.17	1760482.17	14605992.71	40°13'00.689"N	80°34'11.675"W	2210.98	312.421	0.89	-0.76	-0.46
8380.00	90.920	341.990	5971.49	2156.12	1580.09	-1660.29	1760454.06	14606081.31	40°13'01.566"N	80°34'12.032"W	2292.00	313.582	0.90	0.16	-0.88
8472.00	90.250	340.640	5970.55	2247.24	1667.23	-1689.76	1760424.60	14606168.42	40°13'02.429"N	80°34'12.406"W	2373.81	314.615	1.64	-0.73	-1.47
8565.00	90.550	342.130	5969.90	2339.33	1755.36	-1719.45	1760394.93	14606256.52	40°13'03.301"N	80°34'12.783"W	2457.19	315.592	1.63	0.32	1.60
8658.00	91.110	343.460	5968.55	2431.07	1844.19	-1746.95	1760367.44	14606345.31	40°13'04.180"N	80°34'13.132"W	2540.25	316.551	1.55	0.60	1.43
8751.00	90.950	343.320	5966.88	2522.65	1933.29	-1773.53	1760340.87	14606434.38	40°13'05.062"N	80°34'13.469"W	2623.55	317.468	0.23	-0.17	-0.15
8843.00	90.740	342.020	5965.53	2613.44	2021.11	-1800.93	1760313.48	14606522.16	40°13'05.931"N	80°34'13.817"W	2707.07	318.297	1.43	-0.23	-1.41
8936.00	90.800	339.780	5964.28	2705.63	2108.97	-1831.36	1760283.06	14606609.99	40°13'06.801"N	80°34'14.204"W	2793.14	319.030	2.41	0.06	-2.41
9029.00	90.890	339.090	5962.90	2798.11	2196.04	-1864.02	1760250.41	14606697.02	40°13'07.663"N	80°34'14.620"W	2880.48	319.675	0.75	0.10	-0.74
9121.00	90.620	337.620	5961.69	2889.76	2281.54	-1897.95	1760216.49	14606782.49	40°13'08.509"N	80°34'15.052"W	2967.77	320.244	1.62	-0.29	-1.60
9214.00	90.680	337.190	5960.64	2982.52	2367.40	-1933.68	1760180.78	14606868.31	40°13'09.359"N	80°34'15.507"W	3056.75	320.758	0.47	0.06	-0.46

RECEIVED
 Office of Oil and Gas
 2018-06-10



Actual Wellpath Report

Thomas Parkinson BRK 201H AWP Proj: 15078*MD
Page 6 of 10



REFERENCE WELLPATH IDENTIFICATION			
Operator	SOUTHWESTERN ENERGY	Slot	Slot #201H
Area	Brooke County, WV	Well	Thomas Parkinson BRK 201H
Field	Brooke	Wellbore	Thomas Parkinson BRK 201H AWP
Facility	Thomas Parkinson BRK Pad		

WELLPATH DATA (184 stations)															
MD [ft]	Inclination [°]	Azimuth [°]	TVD [ft]	Vert Sect [ft]	North [ft]	East [ft]	Grid East [US ft]	Grid North [US ft]	Latitude	Longitude	Closure Dist [ft]	Closure Dir [°]	DLS [°/100ft]	Build Rate [°/100ft]	Turn Rate [°/100ft]
9307.00	90.800	336.280	5959.44	3075.36	2452.83	-1970.41	1760144.06	14606953.71	40°13'10.205"N	80°34'15.975"W	3146.25	321.224	0.99	0.13	-0.98
9400.00	90.860	337.520	5958.09	3168.17	2538.36	-2006.90	1760107.59	14607039.21	40°13'11.052"N	80°34'16.440"W	3235.88	321.669	1.33	0.06	1.33
9492.00	90.920	338.770	5956.66	3259.85	2623.73	-2041.14	1760073.36	14607124.55	40°13'11.898"N	80°34'16.876"W	3324.19	322.119	1.36	0.07	1.36
9585.00	90.830	338.470	5955.24	3352.45	2710.32	-2075.04	1760039.48	14607211.11	40°13'12.755"N	80°34'17.308"W	3413.45	322.562	0.34	-0.10	-0.32
9678.00	90.890	339.350	5953.84	3445.01	2797.08	-2108.50	1760006.03	14607297.84	40°13'13.614"N	80°34'17.734"W	3502.78	322.990	0.95	0.06	0.95
9771.00	90.920	339.630	5952.38	3537.48	2884.18	-2141.08	1759973.46	14607384.90	40°13'14.476"N	80°34'18.148"W	3592.03	323.412	0.30	0.03	0.30
9863.00	90.950	341.700	5950.87	3628.72	2970.97	-2171.53	1759943.02	14607471.66	40°13'15.335"N	80°34'18.535"W	3679.98	323.836	2.25	0.03	2.25
9956.00	90.990	343.110	5949.30	3720.57	3059.61	-2199.64	1759914.92	14607560.26	40°13'16.212"N	80°34'18.892"W	3768.24	324.287	1.52	0.04	1.52
10048.00	90.340	343.020	5948.23	3811.26	3147.61	-2226.44	1759888.13	14607648.23	40°13'17.083"N	80°34'19.232"W	3855.45	324.727	0.71	-0.71	-0.10
10141.00	90.550	343.730	5947.51	3902.85	3236.72	-2253.05	1759861.54	14607737.30	40°13'17.965"N	80°34'19.570"W	3943.67	325.159	0.80	0.23	0.76
10234.00	90.590	343.900	5946.58	3994.32	3326.03	-2278.97	1759835.63	14607826.58	40°13'18.849"N	80°34'19.898"W	4031.89	325.581	0.19	0.04	0.18
10326.00	90.550	343.220	5945.67	4084.87	3414.26	-2305.00	1759809.60	14607914.78	40°13'19.722"N	80°34'20.228"W	4119.49	325.976	0.74	-0.04	-0.74
10419.00	90.650	342.600	5944.69	4176.59	3503.15	-2332.33	1759782.28	14608003.63	40°13'20.602"N	80°34'20.575"W	4208.54	326.345	0.68	0.11	-0.67
10512.00	90.650	341.570	5943.64	4268.52	3591.64	-2360.94	1759753.69	14608092.08	40°13'21.477"N	80°34'20.938"W	4298.12	326.681	1.11	0.00	-1.11
10604.00	90.620	340.620	5942.62	4359.69	3678.67	-2390.74	1759723.89	14608179.08	40°13'22.339"N	80°34'21.317"W	4387.28	326.980	1.03	-0.03	-1.03
10697.00	90.580	340.140	5941.65	4451.99	3766.26	-2421.97	1759692.68	14608266.64	40°13'23.206"N	80°34'21.714"W	4477.80	327.256	0.52	-0.04	-0.52
10790.00	90.400	338.040	5940.85	4544.53	3853.13	-2455.16	1759659.50	14608353.47	40°13'24.066"N	80°34'22.137"W	4568.85	327.495	2.27	-0.19	-2.26
10883.00	90.460	336.670	5940.15	4637.30	3938.95	-2490.96	1759623.71	14608439.27	40°13'24.916"N	80°34'22.593"W	4660.50	327.691	1.47	0.06	-1.47
10975.00	90.310	336.180	5939.53	4729.17	4023.27	-2527.76	1759586.93	14608523.55	40°13'25.751"N	80°34'23.062"W	4751.45	327.860	0.56	-0.16	-0.53
11068.00	90.340	336.210	5939.01	4822.06	4108.36	-2565.29	1759549.41	14608608.61	40°13'26.593"N	80°34'23.541"W	4843.49	328.019	0.05	0.03	0.03
11161.00	90.250	337.560	5938.53	4914.89	4193.89	-2601.80	1759512.92	14608694.11	40°13'27.440"N	80°34'24.006"W	4935.39	328.185	1.45	-0.10	1.45
11254.00	90.250	338.320	5938.12	5007.60	4280.08	-2636.73	1759478.00	14608780.26	40°13'28.294"N	80°34'24.451"W	5027.07	328.365	0.82	0.00	0.82
11347.00	90.310	338.950	5937.67	5100.21	4366.69	-2670.61	1759444.13	14608866.84	40°13'29.151"N	80°34'24.883"W	5118.61	328.551	0.68	0.06	0.68
11439.00	90.250	339.510	5937.22	5191.73	4452.71	-2703.23	1759411.52	14608952.82	40°13'30.003"N	80°34'25.298"W	5209.04	328.738	0.61	-0.07	0.61
11532.00	90.280	340.650	5936.79	5284.10	4540.14	-2734.92	1759379.85	14609040.22	40°13'30.868"N	80°34'25.701"W	5300.25	328.936	1.23	0.03	1.23
11625.00	90.280	341.100	5936.33	5376.31	4628.01	-2765.39	1759349.39	14609128.06	40°13'31.738"N	80°34'26.088"W	5391.27	329.140	0.48	0.00	0.48
11718.00	90.250	340.360	5935.90	5468.55	4715.80	-2796.08	1759318.71	14609215.81	40°13'32.607"N	80°34'26.478"W	5482.41	329.336	0.80	-0.03	-0.80
11810.00	90.310	341.640	5935.45	5559.74	4802.78	-2826.03	1759288.77	14609302.76	40°13'33.468"N	80°34'26.859"W	5572.54	329.527	1.39	0.07	1.39
11903.00	90.280	342.890	5934.98	5651.63	4891.36	-2854.36	1759260.46	14609391.30	40°13'34.345"N	80°34'27.219"W	5663.28	329.734	1.34	-0.03	1.34
11996.00	90.310	340.760	5934.50	5743.62	4979.71	-2883.37	1759231.46	14609479.62	40°13'35.219"N	80°34'27.587"W	5754.24	329.928	2.29	0.03	-2.29

WV Department of Environmental Protection

0CT - 9 2018

RECEIVED
Office of Oil and Gas

REFERENCE WELLPATH IDENTIFICATION			
Operator	SOUTHWESTERN ENERGY	Slot	Slot #201H
Area	Brooke County, WV	Well	Thomas Parkinson BRK 201H
Field	Brooke	Wellbore	Thomas Parkinson BRK 201H AWP
Facility	Thomas Parkinson BRK Pad		

WELLPATH DATA (184 stations)																
MD [ft]	Inclination [°]	Azimuth [°]	TVD [ft]	Vert Sect [ft]	North [ft]	East [ft]	Grid East [US ft]	Grid North [US ft]	Latitude	Longitude	Closure Dist [ft]	Closure Dir [°]	DLS [°/100ft]	Build Rate [°/100ft]	Turn Rate [°/100ft]	
12089.00	90.340	341.150	5933.97	5835.82	5067.62	-2913.71	1759201.13	14609567.50	40°13'36.089"N	80°34'27.973"W	5845.55	330.103	0.42	0.03	0.42	
12181.00	90.770	338.560	5933.08	5927.22	5153.98	-2945.39	1759169.46	14609653.82	40°13'36.944"N	80°34'28.376"W	5936.23	330.253	2.85	0.47	-2.82	
12274.00	90.830	338.650	5931.78	6019.83	5240.56	-2979.31	1759135.55	14609740.37	40°13'37.801"N	80°34'28.808"W	6028.25	330.381	0.12	0.06	0.10	
12367.00	90.590	341.660	5930.63	6112.17	5328.02	-3010.88	1759104.00	14609827.80	40°13'38.667"N	80°34'29.210"W	6119.90	330.529	3.25	-0.26	3.24	
12459.00	90.580	342.880	5929.69	6203.06	5415.65	-3038.89	1759075.99	14609915.39	40°13'39.534"N	80°34'29.566"W	6210.00	330.702	1.33	-0.01	1.33	
12552.00	90.520	340.240	5928.79	6295.11	5503.86	-3068.31	1759046.59	14610003.57	40°13'40.407"N	80°34'29.939"W	6301.35	330.861	2.84	-0.06	-2.84	
12645.00	90.520	337.310	5927.95	6387.69	5590.54	-3101.97	1759012.94	14610090.22	40°13'41.265"N	80°34'30.368"W	6393.46	330.976	3.15	0.00	-3.15	
12738.00	90.620	335.230	5927.02	6480.57	5675.67	-3139.39	1758975.53	14610175.31	40°13'42.108"N	80°34'30.845"W	6486.06	331.052	2.24	0.11	-2.24	
12830.00	90.550	333.640	5926.09	6572.54	5758.65	-3179.09	1758935.85	14610258.26	40°13'42.930"N	80°34'31.352"W	6577.89	331.099	1.73	-0.08	-1.73	
12923.00	90.550	333.490	5925.19	6665.54	5841.92	-3220.49	1758894.46	14610341.50	40°13'43.755"N	80°34'31.881"W	6670.81	331.133	0.16	0.00	-0.16	
13016.00	90.550	335.650	5924.30	6758.51	5925.90	-3260.42	1758854.55	14610425.45	40°13'44.587"N	80°34'32.390"W	6763.63	331.180	2.32	0.00	2.32	
13108.00	91.200	339.620	5922.89	6850.23	6010.96	-3295.42	1758819.57	14610510.47	40°13'45.429"N	80°34'32.836"W	6855.03	331.267	4.37	0.71	4.32	
13201.00	91.080	342.160	5921.04	6942.41	6098.81	-3325.86	1758789.14	14610598.29	40°13'46.299"N	80°34'33.223"W	6946.71	331.395	2.73	-0.13	2.73	
13294.00	91.110	342.630	5919.27	7034.26	6187.43	-3353.98	1758761.03	14610686.88	40°13'47.176"N	80°34'33.580"W	7038.01	331.540	0.51	0.03	0.51	
13387.00	90.620	343.550	5917.86	7125.92	6276.40	-3381.03	1758733.99	14610775.82	40°13'48.056"N	80°34'33.924"W	7129.13	331.689	1.12	-0.53	0.99	
13480.00	90.650	344.100	5916.83	7217.38	6365.72	-3406.93	1758708.10	14610865.09	40°13'48.900"N	80°34'34.252"W	7220.08	331.844	0.59	0.03	0.59	
13572.00	90.550	343.190	5915.87	7307.91	6453.99	-3432.84	1758682.20	14610953.33	40°13'49.814"N	80°34'34.581"W	7310.15	331.992	1.00	-0.11	-0.99	
13665.00	90.620	339.440	5914.92	7400.01	6542.06	-3462.62	1758652.43	14611041.38	40°13'50.685"N	80°34'34.959"W	7401.92	332.108	4.03	0.08	-4.03	
13758.00	90.680	338.890	5913.86	7492.53	6628.98	-3495.70	1758619.36	14611128.25	40°13'51.546"N	80°34'35.380"W	7494.21	332.196	0.59	0.06	-0.59	
13850.00	90.650	339.410	5912.80	7584.06	6714.95	-3528.44	1758586.63	14611214.19	40°13'52.397"N	80°34'35.797"W	7585.54	332.280	0.57	-0.03	0.57	
13943.00	90.650	340.590	5911.74	7676.44	6802.33	-3560.25	1758554.84	14611301.54	40°13'53.262"N	80°34'36.202"W	7677.70	332.373	1.27	0.00	1.27	
14035.00	90.650	341.140	5910.70	7767.66	6889.24	-3590.40	1758524.70	14611388.42	40°13'54.122"N	80°34'36.585"W	7768.70	332.473	0.60	0.00	0.60	
14128.00	90.680	341.680	5909.62	7859.75	6977.38	-3620.05	1758495.06	14611476.53	40°13'54.994"N	80°34'36.962"W	7860.57	332.579	0.58	0.03	0.58	
14221.00	90.650	341.880	5908.54	7951.75	7065.71	-3649.12	1758466.00	14611564.82	40°13'55.869"N	80°34'37.332"W	7952.38	332.686	0.22	-0.03	0.22	
14313.00	90.680	342.160	5907.47	8042.71	7153.22	-3677.52	1758437.61	14611652.29	40°13'56.735"N	80°34'37.692"W	8043.17	332.792	0.31	0.03	0.30	
14406.00	90.800	342.200	5906.27	8134.61	7241.75	-3705.98	1758409.16	14611740.79	40°13'57.611"N	80°34'38.054"W	8134.93	332.899	0.14	0.13	0.04	
14498.00	90.650	341.210	5905.11	8225.64	7329.09	-3734.86	1758380.30	14611828.10	40°13'58.475"N	80°34'38.421"W	8225.85	332.997	1.09	-0.16	-1.08	
14591.00	90.650	340.350	5904.05	8317.87	7416.90	-3765.47	1758349.70	14611915.87	40°13'59.345"N	80°34'38.810"W	8318.00	333.084	0.92	0.00	-0.92	
14684.00	90.620	339.940	5903.02	8410.22	7504.36	-3797.05	1758318.12	14612003.30	40°14'00.210"N	80°34'39.212"W	8410.30	333.162	0.44	-0.03	-0.44	
14776.00	90.680	340.170	5901.98	8501.59	7590.84	-3828.43	1758286.76	14612089.75	40°14'01.066"N	80°34'39.611"W	8501.63	333.236	0.26	0.07	0.25	

WV Department of Environmental Protection

OCT 6 - 100

Office of Oil and Gas

REFERENCE WELLPATH IDENTIFICATION			
Operator	SOUTHWESTERN ENERGY	Slot	Slot #201H
Area	Brooke County, WV	Well	Thomas Parkinson BRK 201H
Field	Brooke	Wellbore	Thomas Parkinson BRK 201H AWB
Facility	Thomas Parkinson BRK Pad		

WELLPATH DATA (184 stations)															
MD [ft]	Inclination [°]	Azimuth [°]	TVD [ft]	Vert Sect [ft]	North [ft]	East [ft]	Grid East [US ft]	Grid North [US ft]	Latitude	Longitude	Closure Dist [ft]	Closure Dir [°]	DLS [°/100ft]	Build Rate [°/100ft]	Turn Rate [°/100ft]
14869.00	90.680	339.770	5900.87	8593.98	7678.21	-3860.29	1758254.92	14612177.08	40°14'01.931"N	80°34'40.017"W	8593.99	333.309	0.43	0.00	-0.43
14962.00	90.740	339.400	5899.72	8686.43	7765.36	-3892.72	1758222.49	14612264.20	40°14'02.794"N	80°34'40.429"W	8686.43	333.376	0.40	0.06	-0.40
15053.00	90.710	341.350	5898.57	8776.75	7851.06	-3923.28	1758191.94	14612349.87	40°14'03.642"N	80°34'40.818"W	8776.75	333.448	2.14	-0.03	2.14
15078.00	90.710	341.350	5898.26	8801.51	7874.75	-3931.28	1758183.95	14612373.55	40°14'03.877"N	80°34'40.920"W	8801.51	333.470	0.00	0.00	0.00

HOLE & CASING SECTIONS - Ref Wellbore: Thomas Parkinson BRK 201H AWB Ref Wellpath: Thomas Parkinson BRK 201H AWP Proj: 15078*MD									
String/Diameter	Start MD [ft]	End MD [ft]	Interval [ft]	Start TVD [ft]	End TVD [ft]	Start N/S [ft]	Start E/W [ft]	End N/S [ft]	End E/W [ft]
20in Conductor	26.00	126.00	100.00	26.00	126.00	0.00	0.00	0.07	0.33
17.5in Open Hole	126.00	511.00	385.00	126.00	510.99	0.07	0.33	0.62	2.36
13.375in Casing	26.00	491.00	465.00	26.00	490.99	0.00	0.00	0.63	2.26
12.25in Open Hole	511.00	1758.00	1247.00	510.99	1743.91	0.62	2.36	-159.28	-21.93
9.625in Casing	26.00	1738.00	1712.00	26.00	1724.22	0.00	0.00	-155.81	-22.24
8.75in Open Hole	1758.00	5413.00	3655.00	1743.91	5296.45	-159.28	-21.93	-678.20	-652.41
8.5in Open Hole	5413.00	15078.00	9665.00	5296.45	5898.26	-678.20	-652.41	7874.75	-3931.28

TARGETS								
Name	TVD [ft]	North [ft]	East [ft]	Grid East [US ft]	Grid North [US ft]	Latitude	Longitude	Shape
Thomas Parkinson BRK 201H BHL Rev-2	5893.00	7883.51	-3945.68	1758169.55	14612382.31	40°14'03.964"N	80°34'41.105"W	point
Thomas Parkinson BRK 201H LP Rev-2	5996.00	-201.44	-1005.03	1761109.08	14604300.47	40°12'43.930"N	80°34'03.697"W	point

WV Department of Environmental Protection
 OCT 6 - 9 2018
 ... of Oil and Gas



Actual Wellpath Report

Thomas Parkinson BRK 201H AWP Proj: 15078'MD
Page 9 of 10



REFERENCE WELLPATH IDENTIFICATION

Operator	SOUTHWESTERN ENERGY	Slot	Slot #201H
Area	Brooke County, WV	Well	Thomas Parkinson BRK 201H
Field	Brooke	Wellbore	Thomas Parkinson BRK 201H AWB
Facility	Thomas Parkinson BRK Pad		

WELLPATH COMPOSITION - Ref Wellbore: Thomas Parkinson BRK 201H AWB Ref Wellpath: Thomas Parkinson BRK 201H AWP Proj: 15078'MD

Start MD [ft]	End MD [ft]	Positional Uncertainty Model	Log Name/Comment	Wellbore
26.00	500.05	SDI Keeper v1.04	03_SDI Gyro Keeper <17-1/2"> (99.91'-500.05')	Thomas Parkinson BRK 201H AWB
500.05	755.80	SDI Keeper v1.04	04_SDI Gyro Keeper <12-1/4"> (500.05')(549.98'-755.8')	Thomas Parkinson BRK 201H AWB
755.80	1685.00	OWSG MWD rev2 + IFR1 + Multi-Station Correction	07_APS EM+SurCon MSA <12-1/4"> (755.8')(848'-1685')	Thomas Parkinson BRK 201H AWB
1685.00	5334.00	OWSG MWD rev2 + IFR1 + Multi-Station Correction	08_APS EM+SurCon MSA <8-3/4"> (1685')(1767'-5334')	Thomas Parkinson BRK 201H AWB
5334.00	15053.00	OWSG MWD rev2 + IFR1 + Multi-Station Correction	09_BH AT Curve+SurCon MSA <8-1/2"> (5334')(5412'-15053')	Thomas Parkinson BRK 201H AWB
15053.00	15078.00	Blind Drilling (std)	Projection to bit	Thomas Parkinson BRK 201H AWB

RECEIVED
 Office of Oil and Gas
 OCT - 9 2018
 WV Department of
 Environmental Protection

REFERENCE WELLPATH IDENTIFICATION			
Operator	SOUTHWESTERN ENERGY	Slot	Slot #201H
Area	Brooke County, WV	Well	Thomas Parkinson BRK 201H
Field	Brooke	Wellbore	Thomas Parkinson BRK 201H AWB
Facility	Thomas Parkinson BRK Pad		

COMMENTS
<p>Wellpath general comments API: 47-009-00235-0000 BH Job #: 9067027 Rig: SDC 46 Duration: 03/24/2018 - 04/04/2018</p>

RECEIVED
 Office of Oil and Gas
 OCT - 9 2018
 WV Department of
 Environmental Protection