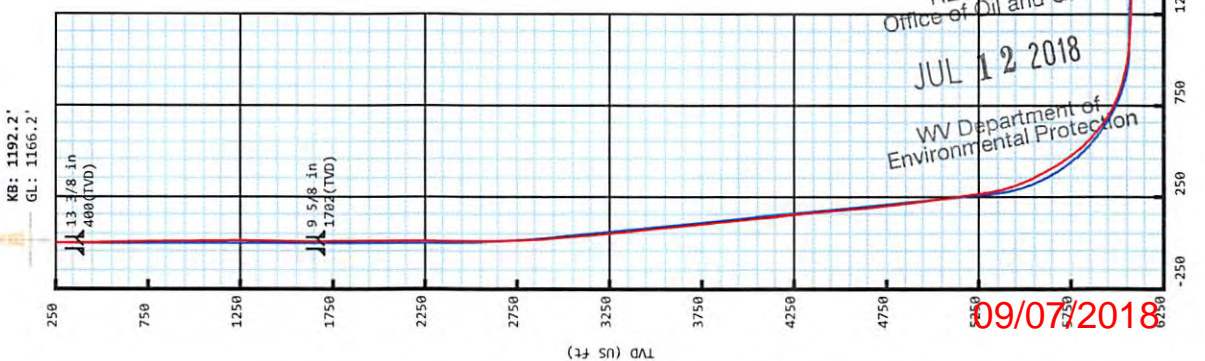




Southwestern Energy®  
 Mark Owen BRK 10H  
 Brooke Co, WV  
 SDC 40  
**Plan vs Actual**

KB: 1192.2'  
 GL: 1166.2'



**Plan Data for Mark Owen BRK 10H**

Plan Point Information:  
 Name      TVD (USft)      +N/-S (USft)      +E/-W (USft)      VSec (USft)      DLS (DLSU)      ToolFace Comments

MD	0.00	0.00	0.00	0.00	0.00	0.0
Inc	0.00	0.00	0.00	0.00	0.00	0.0
Az	0.00	0.00	0.00	0.00	0.00	0.0
MD	26.00	0.00	0.00	0.00	0.00	0.0 KB Offset
2300.00	0.00	0.00	0.00	0.00	0.00	0.0 Nudge KOP
2975.00	13.50	83.01	2968.77	9.63	78.57	32.59 2.00
5398.74	13.50	83.01	5325.54	78.49	640.17	265.52 0.00
6335.81	70.00	151.45	6018.80	-341.87	999.29	811.27 7.00
6579.59	89.02	155.86	6063.00	-555.76	1104.91	1048.90 8.00
11838.00	89.02	155.86	6153.00	-5353.55	3255.28	6265.56 0.00

Target Set Information:  
 Name: Mark Owen BRK 10H  
 Position offsets from Slot centre

Name	TVD (USft)	+N/-S (USft)	+E/-W (USft)	Northing (USft)	Easting (USft)	Lat (°)	Long (°)
LP MO10H	6063.00	-388.37	1029.86	14606948.07	1768368.21	40.219373	-80.541644
PHIL MO10H	6153.00	-5353.55	3255.28	14601982.89	1770593.63	40.205707	-80.533766

**Plan Data for Mark Owen BRK 10H**

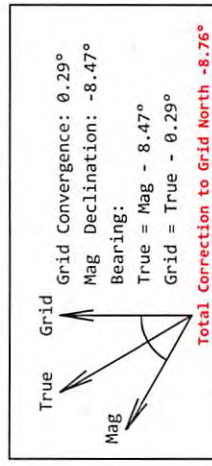
Field: SOUTHWESTERN\_BROOKE CO, WV UTM NAD 83 (17N)  
 Vertical Reference Datum (VRD):  
 Projected Coordinate System: NAD83 / UTM zone 17N

Site: Mark Owen Pad  
 Unit: USFeet      TVD Reference:  
 Company Name: SOUTHWESTERN ENERGY  
 Position: Northing: 14607357.50USft      Longitude: 40.220512°  
 Easting: 1767337.69USft      Longitude: -80.545328°  
 North Reference: Grid      Grid Convergence: 0.29°  
 Elevation Above VRD: 1166.20USft

Slot: Mark Owen BRK 10H  
 Position:  
 Offset is from Site centre  
 +N/-S: -21.12USft      Northing: 14607336.44USft      Latitude: 40.220454°  
 +E/-W: 0.67USft      Easting: 1767338.35USft      Longitude: -80.545326°  
 Elevation Above VRD: 1166.20USft

Well: Mark Owen BRK 10H  
 Type: Main-Well  
 File Number:  
 Plan Folder: P1  
 Vertical Section: Position offset of origin from Slot centre:  
 +N/-S: 0.60USft      Azimuth: 148.70°  
 +E/-W: 0.00USft

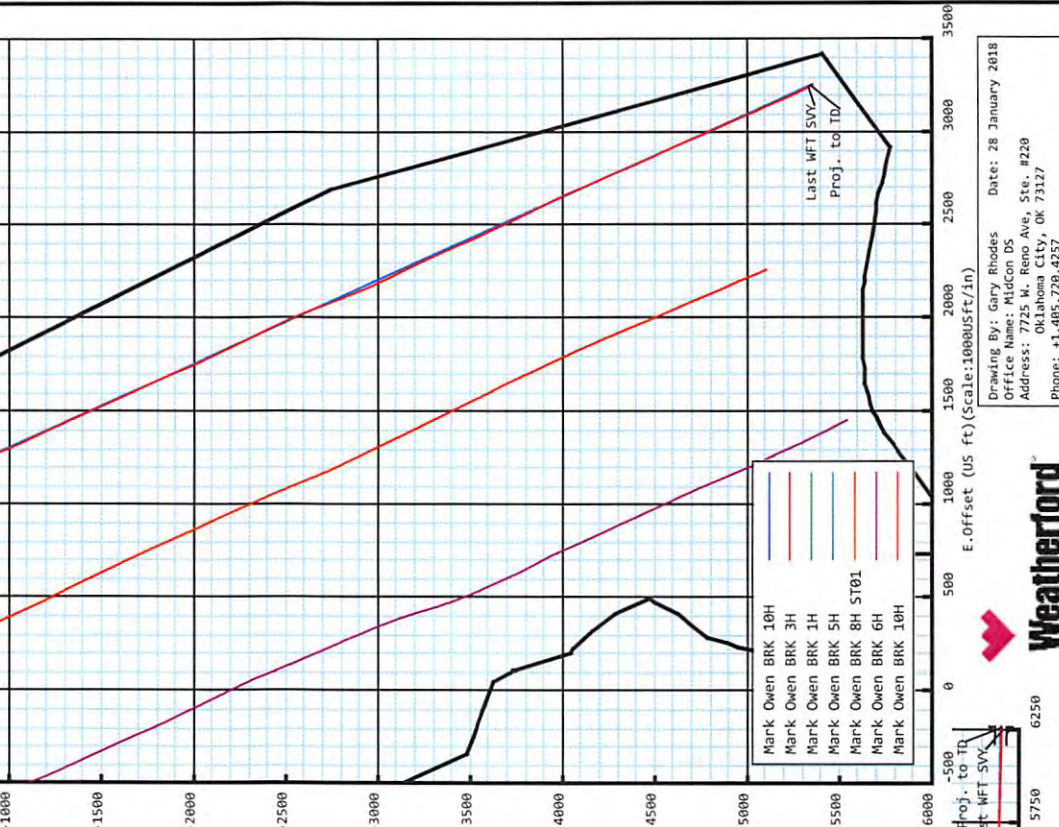
Magnetic Parameters:  
 Model: Field Strength:      Dip:      Date:  
 HDGM: 52630(nT)      -8.47°      67.67°      2018-01-29



**Plan Data for Mark Owen BRK 10H**

Formation Point Information:  
 Name      TVD (USft)      SS (USft)      MD (USft)

Base of Fresh Water	240.00	952.20	240.00
Pittsburgh Coal	332.00	860.20	332.00
Top of Salt Water	856.00	336.20	856.00
Maxton	1217.00	-24.80	1217.00
Big Lime	1366.00	-173.80	1366.00
Big Injun	1507.00	-314.80	1507.00
Base Big Injun	1657.00	-464.80	1657.00
Berea	2014.00	-821.80	2014.00
Upper Rhinestreet	5454.00	-4261.80	5332.17
Lower Rhinestreet	5569.00	-4376.80	5656.04
Basal Rhinestreet	5635.00	-4442.80	5736.47
Cashaqua	5710.00	-4517.80	5819.56
Middlesex	5766.00	-4573.80	5890.42
Lower Middlesex	5793.00	-4600.80	5926.35
Burket	5827.00	-4634.80	5973.63
Tully	5861.00	-4668.80	6023.73
Mahantango	5915.00	-4722.80	6111.20
Levanna	6023.00	-4830.80	6348.37
Upper Marcellus	6042.00	-4849.80	6415.69



Drawing By: Gary Rhodes      Date: 28 January 2018  
 Office Name: MidCon DS  
 Address: 7725 W. Reno Ave, Ste. #228  
 Oklahoma City, OK 73127  
 Phone: +1.405.720.4257



**Mark Owen BRK 10H**

**Map Units:** US ft **Company Name:** SOUTHWESTERN ENERGY  
**Field Name:** Vertical Reference Datum (VRD):  
 SOUTHWESTER N\_BROOKE CO, WV UTM NAD 83 (17N) **Projected Coordinate System:** NAD83 / UTM zone 17N  
**Comment:**

**Site:** Mark Owen Pad  
**Units:** US ft **North Reference:** Grid **Convergence Angle:** 0.29  
**Position:** **Northing:** 14607357.56 US ft **Latitude:** 40.220512  
**Easting:** 1767337.69 US ft **Longitude:** -80.545328  
**Elevation above Field Reference:** 1166.20 US ft  
**Comment:**

**Slot:** Mark Owen BRK 10H  
**Position (Relative to Site Centre)**  
**+N/-S:** -21.12 US ft **Northing:** 14607336.44 US ft **Latitude:** 40.220454  
**+E/-W:** 0.67 US ft **Easting:** 1767338.35 US ft **Longitude:** -80.545326  
**Elevation above Field Reference:** 1166.20 US ft  
**Comment:**

**Well:** Mark Owen BRK 10H  
**Type:** Main well **UWI:**  
**File Number:** **Comment:**  
**Closure Distance:** 6264.3US ft **Closure Azimuth:** 148.73°  
**Vertical Section: Position of Origin (Relative to Slot centre)**  
**+N/-S:** 0.00 US ft **+E/-W:** -0.00 US ft **Az:** 148.70°

**Drill floor: Survey Name:** Definitive Survey  
**Rig Height (Drill Floor):** 26.00us ft **Elevation above Field Reference:** 1192.20us ft **Inclination:** 0.00° **Azimuth:** 0.00°

**Survey Name:** Definitive Survey  
**Date:** 15/Dec/2017 **Survey Tool:** See Survey Tool Ranges below. **Comment:** **Company:**

**Magnetic Model:**  
**Model Name:** HDGM **Date:** 29/Jan/2018 **Field Strength:** 52630.0nT **Declination:** -8.47° **Dip:** 67.67°

**Tie Point:**  
**MD:** 0.00 US ft **Inclination:** 0.00° **Azimuth:** 0.00° **TVD:** -0.00 US ft **North Offset:** 0.00 US ft **East Offset:** -0.00 US ft

**Survey Tool Ranges:**

Name	Start MD(usft)	End MD(usft)	Source Survey
EMS	0.00	388.00	EMS
MFAC_US_V2	388.00	685.00	WFT MFAC_01
MWD	685.00	1672.00	WFT MWD_01
MWD	1672.00	5738.00	WFT MWD_02
MWD	5738.00	11815.00	WFT MWD_03

Wellpath created using minimum curvature.

RECEIVED  
Office of Oil and Gas  
JUL 12 2018  
WV Department of Environmental Protection

## 5D Survey Report

Survey Points: (Relative to Slot centre)(TVD relative to Drill Floor)										
MD (US ft)	Inc (°)	Az (°)	TVD (US ft)	VS (US ft)	N.Offset (US ft)	E.Offset (US ft)	Latitude (° ' ")	Longitude (° ' ")	DLS (%/100US ft)	Comment
0.00	0.00	0.00	-0.00	-0.00	0.00	-0.00	40.220454	-80.545326	0.00	
237.00	0.50	109.76	237.00	0.80	-0.35	0.97	40.220453	-80.545323	0.21	
327.00	0.30	57.46	327.00	1.10	-0.36	1.54	40.220453	-80.545320	0.44	
388.00	0.60	151.36	387.99	1.42	-0.55	1.83	40.220452	-80.545319	1.13	
473.00	1.04	154.38	472.98	2.63	-1.64	2.38	40.220449	-80.545318	0.52	
503.00	1.03	163.17	502.98	3.16	-2.14	2.57	40.220448	-80.545317	0.53	
594.00	1.39	148.51	593.96	5.06	-3.86	3.39	40.220443	-80.545314	0.52	
685.00	1.15	128.61	684.94	7.02	-5.37	4.68	40.220439	-80.545309	0.55	
778.00	1.42	112.63	777.91	8.83	-6.40	6.47	40.220436	-80.545303	0.48	
869.00	1.43	100.32	868.89	10.49	-7.04	8.63	40.220435	-80.545295	0.34	
963.00	1.28	78.12	962.86	11.62	-7.03	10.81	40.220435	-80.545287	0.58	
1056.00	1.51	82.89	1055.83	12.47	-6.67	13.04	40.220436	-80.545279	0.28	
1148.00	0.45	117.64	1147.82	13.28	-6.68	14.56	40.220435	-80.545274	1.27	
1241.00	0.88	249.53	1240.82	13.46	-7.10	14.22	40.220434	-80.545275	1.32	
1334.00	0.94	290.50	1333.80	12.72	-7.09	12.83	40.220434	-80.545280	0.69	
1426.00	1.35	331.06	1425.79	11.05	-5.87	11.60	40.220438	-80.545285	0.96	
1519.00	1.01	12.51	1518.77	9.36	-4.11	11.25	40.220443	-80.545286	0.96	
1612.00	1.07	79.49	1611.76	9.08	-3.16	12.28	40.220445	-80.545282	1.24	
1672.00	0.82	81.40	1671.75	9.44	-2.99	13.26	40.220446	-80.545279	0.42	
1796.00	0.76	157.01	1795.74	10.60	-3.61	14.45	40.220444	-80.545274	0.78	
1889.00	0.40	200.13	1888.74	11.41	-4.49	14.58	40.220441	-80.545274	0.58	
1982.00	0.37	242.95	1981.73	11.59	-4.93	14.20	40.220440	-80.545275	0.30	
2074.00	0.52	260.95	2073.73	11.41	-5.13	13.53	40.220440	-80.545278	0.22	
2167.00	0.31	358.82	2166.73	11.03	-4.94	13.11	40.220440	-80.545279	0.69	
2260.00	0.97	18.85	2259.72	10.31	-3.95	13.36	40.220443	-80.545278	0.74	
2353.00	1.45	27.29	2352.70	9.19	-2.16	14.15	40.220448	-80.545275	0.55	
2445.00	2.69	55.21	2444.64	8.45	0.11	16.46	40.220454	-80.545267	1.70	
2538.00	4.19	63.18	2537.47	8.59	2.89	21.28	40.220462	-80.545250	1.69	
2631.00	5.81	68.16	2630.12	9.63	6.17	28.68	40.220471	-80.545223	1.80	
2724.00	7.57	72.19	2722.48	11.83	9.80	38.88	40.220480	-80.545187	1.96	
2817.00	9.62	75.34	2814.43	15.48	13.64	52.24	40.220491	-80.545139	2.26	
2910.00	11.86	81.65	2905.80	21.44	16.99	69.21	40.220500	-80.545078	2.72	
3002.00	11.79	83.68	2995.85	29.09	19.40	87.91	40.220506	-80.545011	0.46	
3095.00	10.85	80.54	3087.04	36.36	21.89	105.99	40.220513	-80.544946	1.21	
3188.00	12.73	81.41	3178.07	43.57	24.86	124.75	40.220520	-80.544879	2.03	
3280.00	14.01	80.94	3267.58	51.70	28.12	145.77	40.220529	-80.544803	1.40	
3373.00	14.84	82.95	3357.64	60.85	31.36	168.71	40.220538	-80.544721	1.04	
3466.00	14.46	85.52	3447.62	70.99	33.73	192.11	40.220544	-80.544637	0.81	
3558.00	12.86	84.00	3537.02	80.54	35.69	213.74	40.220549	-80.544560	1.78	
3651.00	12.76	83.09	3627.70	89.21	38.01	234.23	40.220555	-80.544486	0.24	
3744.00	13.04	83.41	3718.36	97.83	40.45	254.85	40.220561	-80.544412	0.31	
3837.00	13.84	85.01	3808.81	107.15	42.62	276.35	40.220567	-80.544335	0.95	
3929.00	13.44	84.72	3898.21	116.72	44.56	297.96	40.220572	-80.544258	0.44	
4022.00	11.83	83.77	3988.96	125.50	46.59	318.20	40.220577	-80.544185	1.75	
4115.00	13.05	85.04	4079.77	134.20	48.54	338.14	40.220583	-80.544114	1.34	
4208.00	14.12	84.34	4170.17	143.77	50.56	359.89	40.220588	-80.544036	1.16	
4300.00	13.17	82.83	4259.57	152.91	52.98	381.45	40.220594	-80.543959	1.10	
4393.00	13.75	83.30	4350.02	161.84	55.59	402.94	40.220601	-80.543882	0.63	
4486.00	13.65	81.31	4440.37	170.66	58.54	424.77	40.220609	-80.543803	0.52	
4578.00	13.40	79.11	4529.82	178.55	62.19	445.97	40.220618	-80.543727	0.62	
4671.00	14.41	81.31	4620.10	186.76	65.97	467.99	40.220629	-80.543648	1.23	
4764.00	15.06	84.89	4710.04	196.54	68.80	491.46	40.220636	-80.543564	1.20	
4857.00	15.35	85.16	4799.78	207.36	70.91	515.76	40.220641	-80.543477	0.32	
4949.00	15.48	84.14	4888.47	218.06	73.20	540.11	40.220647	-80.543390	0.33	
5042.00	14.95	85.30	4978.21	228.76	75.45	564.41	40.220653	-80.543303	0.66	
5135.00	14.69	91.58	5068.13	240.53	76.10	588.16	40.220655	-80.543218	1.75	
5228.00	13.70	93.16	5158.28	253.17	75.17	610.94	40.220652	-80.543136	1.14	
5320.00	13.83	90.92	5247.64	265.19	74.39	632.81	40.220649	-80.543058	0.60	
5367.00	14.86	93.77	5293.18	271.65	73.91	644.44	40.220648	-80.543016	2.66	

RECEIVED  
Office of Oil and Gas

JUL 12 2018

WV Department of  
Environmental Protection

## 5D Survey Report

Survey Points: (Relative to Slot centre)(TVD relative to Drill Floor)										
MD (US ft)	Inc (°)	Az (°)	TVD (US ft)	VS (US ft)	N.Offset (US ft)	E.Offset (US ft)	Latitude (° ' ")	Longitude (° ' ")	DLS (%/100US ft)	Comment
5413.00	16.23	101.69	5337.50	279.42	72.22	656.63	40.220643	-80.542972	5.49	
5459.00	18.49	108.87	5381.41	289.41	68.55	669.83	40.220633	-80.542925	6.76	
5506.00	20.84	115.15	5425.67	302.11	62.59	684.45	40.220616	-80.542873	6.72	
5552.00	24.03	121.16	5468.19	317.24	54.26	699.88	40.220593	-80.542818	8.53	
5599.00	25.89	126.18	5510.80	335.20	43.25	716.35	40.220563	-80.542759	5.99	
5645.00	27.81	130.12	5551.84	354.65	30.41	732.67	40.220527	-80.542701	5.69	
5691.00	28.73	131.87	5592.35	375.41	16.11	749.11	40.220488	-80.542642	2.69	
5738.00	30.00	133.18	5633.32	397.54	0.53	766.09	40.220445	-80.542582	3.03	
5800.00	32.56	135.79	5686.30	428.75	-22.04	789.03	40.220382	-80.542500	4.67	
5846.00	34.72	136.96	5724.60	453.64	-40.49	806.60	40.220331	-80.542437	4.90	
5890.00	38.13	140.51	5760.00	479.37	-60.14	823.80	40.220277	-80.542376	9.11	
5936.00	41.26	142.87	5795.39	508.52	-83.20	841.99	40.220214	-80.542311	7.55	
5983.00	45.40	145.16	5829.57	540.65	-109.30	860.92	40.220142	-80.542244	9.42	
6029.00	48.43	146.23	5860.99	574.20	-137.05	879.84	40.220065	-80.542177	6.80	
6075.00	50.69	146.91	5890.83	609.18	-166.27	899.13	40.219985	-80.542108	5.04	
6122.00	53.20	147.21	5919.80	646.17	-197.33	919.25	40.219899	-80.542037	5.36	
6168.00	58.00	147.71	5945.78	684.11	-229.32	939.65	40.219811	-80.541964	10.47	
6214.00	62.54	149.23	5968.59	724.04	-263.36	960.52	40.219717	-80.541890	10.28	
6261.00	66.69	149.98	5988.73	766.49	-299.98	982.00	40.219616	-80.541814	8.95	
6307.00	70.47	151.15	6005.53	809.28	-337.27	1003.03	40.219514	-80.541739	8.55	
6354.00	73.31	151.73	6020.14	853.90	-376.50	1024.39	40.219406	-80.541663	6.16	
6400.00	75.38	152.17	6032.55	898.12	-415.59	1045.21	40.219298	-80.541590	4.59	
6446.00	77.58	152.51	6043.30	942.75	-455.20	1065.97	40.219189	-80.541516	4.84	
6493.00	79.72	152.86	6052.55	988.71	-496.14	1087.12	40.219076	-80.541441	4.61	
6539.00	82.78	153.39	6059.55	1034.04	-536.69	1107.67	40.218965	-80.541368	6.75	
6585.00	86.30	154.06	6063.92	1079.65	-577.75	1127.93	40.218852	-80.541296	7.79	
6632.00	87.23	155.70	6066.58	1126.30	-620.23	1147.85	40.218735	-80.541226	4.01	
6678.00	86.67	158.18	6069.02	1171.75	-662.49	1165.84	40.218618	-80.541162	5.52	
6771.00	89.01	158.96	6072.53	1263.30	-749.00	1199.80	40.218380	-80.541042	2.65	
6864.00	88.77	158.86	6074.33	1354.81	-835.75	1233.25	40.218142	-80.540924	0.28	
6956.00	89.32	158.66	6075.86	1445.39	-921.49	1266.58	40.217906	-80.540806	0.64	
7049.00	89.20	157.18	6077.07	1537.17	-1007.66	1301.53	40.217669	-80.540682	1.60	
7142.00	89.32	155.21	6078.27	1629.37	-1092.74	1339.07	40.217434	-80.540549	2.12	
7235.00	89.14	153.94	6079.52	1721.87	-1176.72	1378.99	40.217203	-80.540408	1.38	
7327.00	89.14	155.84	6080.90	1813.32	-1260.01	1418.02	40.216974	-80.540270	2.06	
7420.00	89.20	156.39	6082.24	1905.53	-1345.04	1455.68	40.216740	-80.540136	0.59	
7513.00	89.08	155.66	6083.64	1997.76	-1430.00	1493.46	40.216506	-80.540003	0.80	
7603.00	89.08	155.67	6085.09	2087.08	-1512.00	1530.54	40.216280	-80.539871	0.01	
7696.00	88.95	155.94	6086.68	2179.36	-1596.81	1568.65	40.216047	-80.539736	0.32	
7788.00	88.95	154.72	6088.37	2270.72	-1680.40	1607.05	40.215817	-80.539600	1.33	
7881.00	89.20	155.19	6089.87	2363.16	-1764.65	1646.41	40.215585	-80.539461	0.57	
7974.00	89.14	156.72	6091.22	2455.40	-1849.56	1684.30	40.215351	-80.539327	1.65	
8066.00	89.32	157.73	6092.46	2546.38	-1934.38	1719.91	40.215118	-80.539201	1.12	
8156.00	89.20	156.38	6093.62	2635.41	-2017.25	1754.99	40.214890	-80.539077	1.51	
8246.00	89.26	155.16	6094.83	2724.72	-2099.32	1791.92	40.214664	-80.538946	1.36	
8338.00	89.14	155.29	6096.11	2816.11	-2182.84	1830.47	40.214434	-80.538810	0.19	
8431.00	89.14	154.41	6097.51	2908.57	-2267.01	1869.99	40.214202	-80.538670	0.95	
8524.00	89.08	154.30	6098.95	3001.10	-2350.84	1910.24	40.213972	-80.538527	0.13	
8614.00	88.89	155.41	6100.55	3090.57	-2432.30	1948.47	40.213747	-80.538391	1.25	
8706.00	88.64	155.61	6102.53	3181.90	-2516.00	1986.60	40.213517	-80.538256	0.35	
8799.00	88.83	157.27	6104.58	3274.02	-2601.23	2023.76	40.213282	-80.538125	1.80	
8892.00	89.29	159.25	6106.11	3365.72	-2687.60	2058.20	40.213045	-80.538003	2.19	
8985.00	88.94	159.25	6107.54	3457.13	-2774.55	2091.15	40.212805	-80.537887	0.38	
9077.00	89.45	158.77	6108.84	3547.64	-2860.44	2124.10	40.212569	-80.537770	0.76	
9170.00	89.20	157.23	6109.93	3639.41	-2946.66	2158.93	40.212332	-80.537647	1.68	
9263.00	89.01	154.58	6111.39	3731.65	-3031.54	2196.89	40.212098	-80.537513	2.86	
9356.00	89.01	153.11	6112.99	3824.26	-3115.00	2237.88	40.211868	-80.537368	1.58	
9448.00	88.89	154.32	6114.68	3915.89	-3197.47	2278.61	40.211641	-80.537223	1.32	
9541.00	89.20	155.18	6116.23	4008.36	-3281.57	2318.28	40.211410	-80.537083	0.98	

RECEIVED  
Office of Oil and Gas  
JUL 12 2018  
WV Department of  
Environmental Protection

## 5D Survey Report

Survey Points: (Relative to Slot centre)(TVD relative to Drill Floor)										
MD (US ft)	Inc (°)	Az (°)	TVD (US ft)	VS (US ft)	N.Offset (US ft)	E.Offset (US ft)	Latitude (° ' ")	Longitude (° ' ")	DLS (%/100US ft)	Comment
9634.00	89.12	157.14	6117.59	4100.56	-3366.62	2355.86	40.211176	-80.536950	2.11	
9727.00	89.32	157.40	6118.86	4192.51	-3452.39	2391.79	40.210940	-80.536823	0.35	
9820.00	89.08	155.40	6120.16	4284.66	-3537.60	2429.02	40.210705	-80.536691	2.17	
9912.00	89.01	154.51	6121.69	4376.10	-3620.94	2467.96	40.210476	-80.536553	0.97	
10005.00	89.21	155.37	6123.14	4468.53	-3705.17	2507.35	40.210244	-80.536413	0.95	
10098.00	89.01	154.32	6124.58	4560.99	-3789.34	2546.87	40.210012	-80.536274	1.15	
10191.00	89.01	153.40	6126.19	4653.60	-3872.82	2587.84	40.209782	-80.536128	0.99	
10284.00	88.83	153.22	6127.94	4746.28	-3955.89	2629.60	40.209554	-80.535980	0.27	
10376.00	89.01	156.93	6129.67	4837.68	-4039.30	2668.36	40.209324	-80.535843	4.04	
10469.00	89.20	156.51	6131.13	4929.76	-4124.71	2705.11	40.209089	-80.535713	0.50	
10562.00	89.03	155.37	6132.56	5022.00	-4209.62	2743.02	40.208855	-80.535579	1.24	
10652.00	88.58	156.71	6134.44	5111.24	-4291.85	2779.56	40.208629	-80.535450	1.57	
10742.00	88.77	157.18	6136.52	5200.29	-4374.64	2814.80	40.208401	-80.535325	0.56	
10835.00	88.77	154.80	6138.52	5292.51	-4459.56	2852.63	40.208167	-80.535191	2.56	
10927.00	88.89	155.12	6140.40	5383.94	-4542.90	2891.56	40.207938	-80.535053	0.37	
11017.00	88.71	155.91	6142.28	5473.28	-4624.79	2928.85	40.207713	-80.534921	0.90	
11107.00	89.26	157.87	6143.88	5562.35	-4707.55	2964.17	40.207485	-80.534796	2.26	
11196.00	89.14	156.19	6145.12	5650.40	-4789.48	2998.90	40.207259	-80.534673	1.89	
11286.00	88.89	155.83	6146.67	5739.65	-4871.69	3035.48	40.207033	-80.534544	0.49	
11379.00	88.83	156.03	6148.52	5831.89	-4956.59	3073.41	40.206799	-80.534410	0.22	
11469.00	88.89	156.38	6150.31	5921.11	-5038.92	3109.71	40.206573	-80.534281	0.39	
11558.00	88.71	157.16	6152.17	6009.20	-5120.69	3144.81	40.206348	-80.534157	0.90	
11651.00	88.71	156.92	6154.26	6101.20	-5206.30	3181.08	40.206112	-80.534029	0.26	
11744.00	88.77	153.82	6156.31	6193.53	-5290.81	3219.82	40.205880	-80.533891	3.33	
11792.00	88.71	152.86	6157.37	6241.36	-5333.69	3241.35	40.205761	-80.533815	2.00	Last WFT SVY
11815.00	88.71	152.86	6157.88	6264.30	-5354.15	3251.84	40.205705	-80.533778	0.00	Proj. to TD

RECEIVED  
Office of Oil and Gas  
JUL 12 2018  
WV Department of  
Environmental Protection