

SOUTHWESTERN ENERGY

Location: Brooke County, WV Slot: Slot 6H
 Field: Brooke Well: James Seabright BRK 6H
 Facility: James Seabright BRK Pad Wellbore: James Seabright BRK 6H PWB



API: 47-009-00176-0000
 Job#: 8572886
 Rig: SDC-46
 Duration: 05/27/17 - 06/06/17



Plot reference wellpath is James Seabright BRK 6H PWB Rev-A.0 Grid System: NAD83 / UTM Zone 17 North, US feet
 True vertical depths are referenced to SDC-46 (RKB) * = Wellpath was transformed from a different geodetic datum
 Measured depths are referenced to SDC-46 (RKB) North Reference: Grid north
 SDC-46 (RKB) to Mean Sea Level: 1155 feet Scale: True distance
 Mean Sea Level to Ground level (At Slot: Slot 6H): -1129 feet Depths are in feet
 Coordinates are in feet referenced to Slot Created by: amarcar on 2017-06-13
 Database: WA_MPL_EASTERNUS_Defn

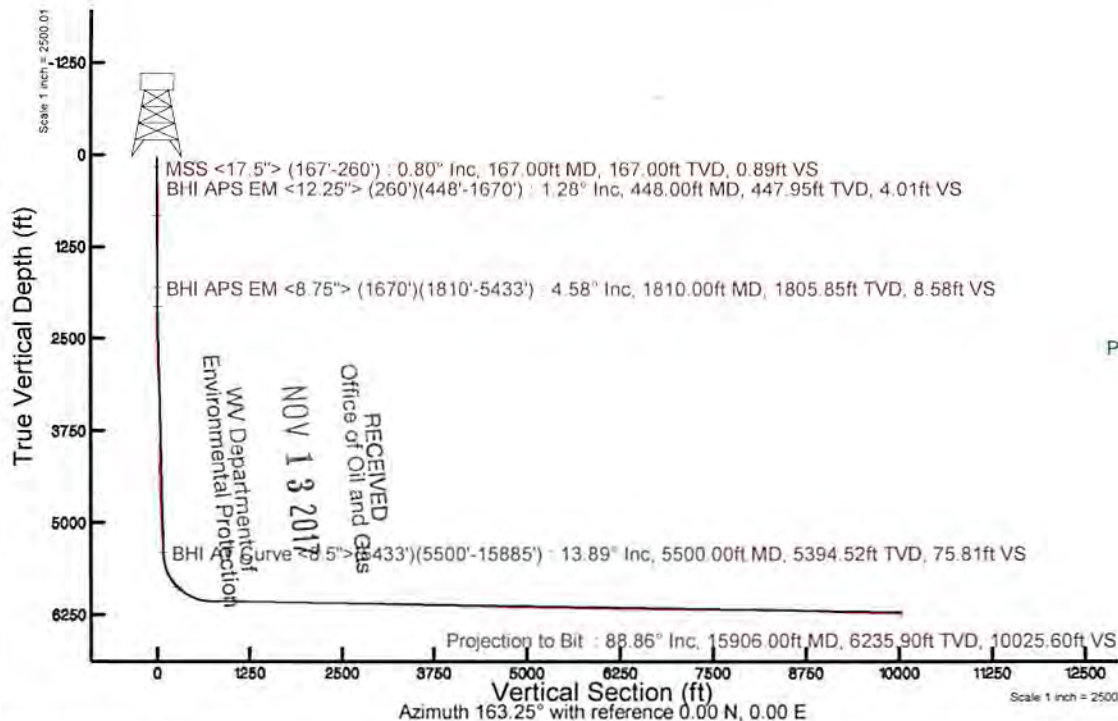
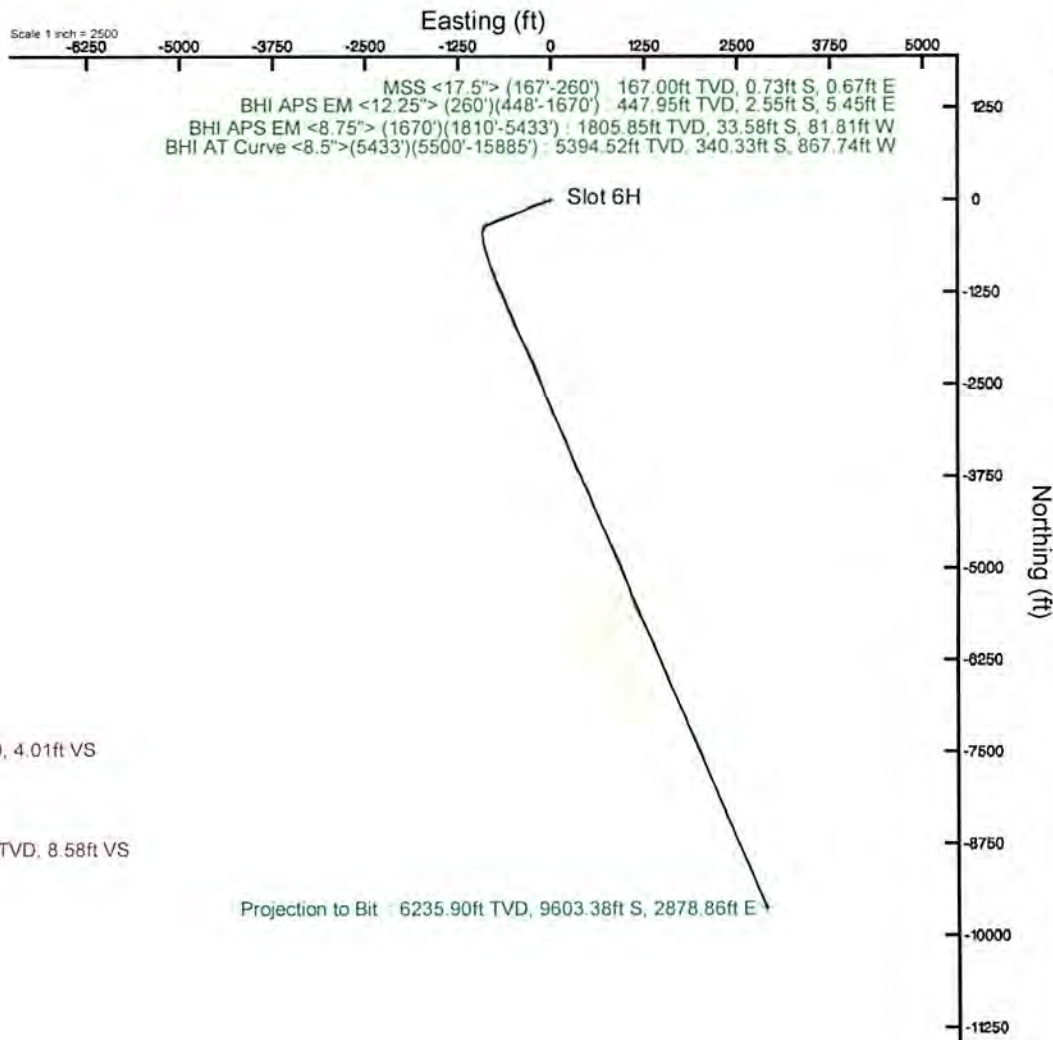
Location Information

Facility Name	Grid East (US ft)	Grid North (US ft)	Latitude	Longitude		
James Seabright BRK Pad	1771209.695	14607351.720	40°13'13.587"N	80°31'53.248"W		
Slot	Local N (ft)	Local E (ft)	Grid East (US ft)	Grid North (US ft)	Latitude	Longitude
Slot 6H	-10.23	9.56	1771219.250	14607341.490	40°13'13.485"N	80°31'53.125"W

Comment: 6H
 SDC-46 (RKB) to Ground level (At Slot: Slot 6H): 26ft
 Mean Sea Level to Ground level (At Slot: Slot 6H): -1129ft
 SDC-46 (RKB) to Mean Sea Level: 1155ft

Well Profile Data

Design Comment	MD (ft)	Inc (")	Az (°)	TVD (ft)	Local N (ft)	Local E (ft)	DLS ("/100ft)	VS (ft)
Tie On	26.00	0.000	248.154	26.00	0.00	0.00	0.00	0.00
Start Nudge	700.00	0.000	248.154	700.00	0.00	0.00	0.00	0.00
End Nudge	950.00	5.000	248.154	949.88	-4.06	-10.12	2.00	0.97
Start Build	1850.00	5.000	248.154	1846.26	-33.25	-82.93	0.00	7.94
End Build	2294.05	13.881	248.005	2283.86	-60.45	-150.41	2.00	14.54
Curve KOP	5547.04	13.881	248.005	5441.85	-352.73	-874.03	0.00	85.87
Landing Point	6539.49	89.052	157.000	6063.00	-988.28	-768.19	9.00	724.96
Total Depth	15906.54	89.052	157.000	6218.00	-9609.52	2891.29	0.00	10035.06





Actual Wellpath Report

James Seabright BRK 6H AWP Proj: 15906'
Page 1 of 10



REFERENCE WELLPATH IDENTIFICATION			
Operator	SOUTHWESTERN ENERGY	Slot	Slot 6H
Area	Brooke County, WV	Well	James Seabright BRK 6H
Field	Brooke	Wellbore	James Seabright BRK 6H AWB
Facility	James Seabright BRK Pad		

REPORT SETUP INFORMATION			
Projection System	NAD83 / UTM Zone 17 North, US feet	Software System	WellArchitect® 5.0
North Reference	Grid	User	Amarcar
Scale	0.999620	Report Generated	13/Jun/2017 at 14:14
Convergence at slot	0.31° East	Database/Source file	WA_MPL_EASTERNUS_Defn/James_Seabright_BRK_6H_AWP_Proj_15906_.xml

WELLPATH LOCATION						
	Local coordinates		Grid coordinates		Geographic coordinates	
	North[ft]	East[ft]	Easting[US ft]	Northing[US ft]	Latitude	Longitude
Slot Location	-10.23	9.56	1771219.25	14607341.49	40°13'13.485"N	80°31'53.125"W
Facility Reference Pt			1771209.70	14607351.72	40°13'13.587"N	80°31'53.248"W
Field Reference Pt			0.00	0.00	0°00'00.000"	85°29'19.478"W

WELLPATH DATUM			
Calculation method	Minimum curvature	SDC-46 (RKB) to Facility Vertical Datum	1155.00ft
Horizontal Reference Pt	Slot	SDC-46 (RKB) to Mean Sea Level	1155.00ft
Vertical Reference Pt	SDC-46 (RKB)	SDC-46 (RKB) to Ground Level at Slot (Slot 6H)	26.00ft
MD Reference Pt	SDC-46 (RKB)	Section Origin	N 0.00, E 0.00 ft
Field Vertical Reference	Mean Sea Level	Section Azimuth	163.25°

RECEIVED
 Office of Oil and Gas
 NOV 13 2017
 WV Department of
 Environmental Protection



Actual Wellpath Report

James Seabright BRK 6H AWP Proj: 15906'
Page 2 of 10



REFERENCE WELLPATH IDENTIFICATION			
Operator	SOUTHWESTERN ENERGY	Slot	Slot 6H
Area	Brooke County, WV	Well	James Seabright BRK 6H
Field	Brooke	Wellbore	James Seabright BRK 6H AWB
Facility	James Seabright BRK Pad		

WELLPATH DATA (183 stations) † = interpolated/extrapolated station															
MD [ft]	Inclination [°]	Azimuth [°]	TVD [ft]	Vert Sect [ft]	North [ft]	East [ft]	Grid East [US ft]	Grid North [US ft]	Latitude	Longitude	Closure Dist [ft]	Closure Dir [°]	DLS [°/100ft]	Build Rate [°/100ft]	Turn Rate [°/100ft]
0.00†	0.000	137.500	0.00	0.00	0.00	0.00	1771219.25	14607341.49	40°13'13.485"N	80°31'53.125"W	0.00	0.000	0.00	0.00	0.00
26.00	0.000	137.500	26.00	0.00	0.00	0.00	1771219.25	14607341.49	40°13'13.485"N	80°31'53.125"W	0.00	0.000	0.00	0.00	0.00
167.00	0.800	137.500	167.00	0.89	-0.73	0.67	1771219.91	14607340.76	40°13'13.478"N	80°31'53.117"W	0.98	137.500	0.57	0.57	97.52
260.00	1.000	108.800	259.98	1.94	-1.47	1.87	1771221.12	14607340.02	40°13'13.470"N	80°31'53.101"W	2.38	128.066	0.52	0.22	-30.86
448.00	1.280	105.340	447.95	4.01	-2.55	5.45	1771224.70	14607338.94	40°13'13.460"N	80°31'53.055"W	6.02	115.076	0.15	0.15	-1.84
509.00	1.310	108.340	508.93	4.78	-2.95	6.77	1771226.02	14607338.54	40°13'13.456"N	80°31'53.038"W	7.38	113.547	0.12	0.05	4.92
602.00	0.560	210.950	601.92	5.69	-3.67	7.54	1771226.79	14607337.82	40°13'13.448"N	80°31'53.028"W	8.39	115.966	1.65	-0.81	110.33
694.00	1.540	243.290	693.91	6.21	-4.62	6.21	1771225.46	14607336.88	40°13'13.439"N	80°31'53.046"W	7.74	126.626	1.20	1.07	35.15
787.00	2.930	256.670	786.83	6.28	-5.73	2.78	1771222.03	14607335.77	40°13'13.428"N	80°31'53.090"W	6.36	154.106	1.59	1.49	14.39
880.00	3.950	256.120	879.67	5.98	-7.04	-2.64	1771216.61	14607334.45	40°13'13.416"N	80°31'53.160"W	7.52	200.576	1.10	1.10	-0.59
973.00	5.130	256.220	972.37	5.61	-8.80	-9.79	1771209.46	14607332.69	40°13'13.399"N	80°31'53.252"W	13.17	228.051	1.27	1.27	0.11
1066.00	5.830	255.300	1064.95	5.22	-10.99	-18.40	1771200.86	14607330.50	40°13'13.377"N	80°31'53.363"W	21.43	239.150	0.76	0.75	-0.99
1158.00	6.110	249.010	1156.45	5.42	-13.93	-27.49	1771191.77	14607327.57	40°13'13.349"N	80°31'53.481"W	30.82	243.129	0.77	0.30	-6.84
1251.00	5.270	242.840	1248.99	6.55	-17.65	-35.91	1771183.35	14607323.85	40°13'13.312"N	80°31'53.590"W	40.01	243.824	1.12	-0.90	-6.63
1344.00	4.430	247.850	1341.66	7.66	-20.96	-43.04	1771176.23	14607320.54	40°13'13.280"N	80°31'53.682"W	47.87	244.038	1.01	-0.90	5.39
1437.00	4.600	256.380	1434.37	7.80	-23.19	-49.99	1771169.28	14607318.31	40°13'13.259"N	80°31'53.771"W	55.10	245.115	0.74	0.18	9.17
1530.00	4.920	253.510	1527.05	7.58	-25.20	-57.44	1771161.83	14607316.30	40°13'13.239"N	80°31'53.868"W	62.72	246.313	0.43	0.34	-3.09
1623.00	5.680	249.260	1619.65	7.88	-27.96	-65.57	1771153.71	14607313.54	40°13'13.212"N	80°31'53.972"W	71.28	246.905	0.92	0.82	-4.57
1670.00	5.720	247.750	1666.42	8.26	-29.67	-69.91	1771149.37	14607311.83	40°13'13.195"N	80°31'54.029"W	75.94	247.003	0.33	0.09	-3.21
1810.00	4.580	256.840	1805.85	8.58	-33.58	-81.81	1771137.47	14607307.92	40°13'13.157"N	80°31'54.182"W	88.43	247.680	1.00	-0.81	6.49
1902.00	5.740	258.550	1897.48	7.93	-35.33	-89.89	1771129.39	14607306.17	40°13'13.141"N	80°31'54.287"W	96.59	248.542	1.27	1.26	1.86
1995.00	9.730	260.970	1989.61	6.44	-37.49	-102.22	1771117.07	14607304.01	40°13'13.120"N	80°31'54.446"W	108.88	249.858	4.30	4.29	2.60
2088.00	11.540	259.780	2081.01	4.33	-40.38	-119.14	1771100.16	14607301.13	40°13'13.092"N	80°31'54.664"W	125.79	251.278	1.96	1.95	-1.28
2181.00	12.700	257.790	2171.94	2.46	-44.19	-138.28	1771081.02	14607297.32	40°13'13.056"N	80°31'54.911"W	145.17	252.279	1.33	1.25	-2.14
2273.00	12.740	254.270	2261.68	1.48	-49.08	-157.93	1771061.38	14607292.43	40°13'13.008"N	80°31'55.165"W	165.38	252.737	0.84	0.04	-3.83
2366.00	11.960	252.740	2352.53	1.38	-54.72	-177.01	1771042.31	14607286.79	40°13'12.954"N	80°31'55.411"W	185.27	252.822	0.91	-0.84	-1.65
2459.00	11.130	248.440	2443.65	2.22	-60.88	-194.56	1771024.77	14607280.64	40°13'12.894"N	80°31'55.638"W	203.86	252.626	1.29	-0.89	-4.62
2555.00	12.400	250.420	2537.63	3.51	-67.73	-212.89	1771006.45	14607273.78	40°13'12.827"N	80°31'55.874"W	223.40	252.350	1.39	1.32	2.06
2648.00	14.790	251.180	2628.02	4.43	-74.91	-233.53	1770985.81	14607266.61	40°13'12.757"N	80°31'56.141"W	245.25	252.258	1.58	2.57	0.82
2741.00	16.050	248.440	2717.67	5.94	-83.47	-256.73	1770962.62	14607258.06	40°13'12.674"N	80°31'56.441"W	269.95	252.990	1.56	1.35	-2.95

NOV 13 2017



Actual Wellpath Report

James Seabright BRK 6H AWP Proj: 15906'
Page 3 of 10



REFERENCE WELLPATH IDENTIFICATION			
Operator	SOUTHWESTERN ENERGY	Slot	Slot 6H
Area	Brooke County, WV	Well	James Seabright BRK 6H
Field	Brooke	Wellbore	James Seabright BRK 6H AWB
Facility	James Seabright BRK Pad		

WELLPATH DATA (183 stations)															
MD [ft]	Inclination [°]	Azimuth [°]	TVD [ft]	Vert Sect [ft]	North [ft]	East [ft]	Grid East [US ft]	Grid North [US ft]	Latitude	Longitude	Closure Dist [ft]	Closure Dir [°]	DLS [°/100ft]	Build Rate [°/100ft]	Turn Rate [°/100ft]
2834.00	13.930	242.020	2807.51	9.20	-93.44	-278.57	1770940.78	14607248.08	40°13'12.576"N	80°31'56.723"W	293.83	251.457	2.89	-2.28	-6.90
2927.00	12.340	232.140	2898.08	14.96	-104.80	-296.31	1770923.06	14607236.73	40°13'12.465"N	80°31'56.952"W	314.29	250.523	2.95	-1.71	-10.62
3020.00	13.050	235.790	2988.81	21.69	-116.80	-312.84	1770906.53	14607224.74	40°13'12.347"N	80°31'57.166"W	333.93	249.527	1.15	0.76	3.92
3113.00	13.690	234.120	3079.29	28.44	-129.15	-330.44	1770888.94	14607212.39	40°13'12.226"N	80°31'57.394"W	354.78	248.652	0.80	0.69	-1.80
3205.00	14.240	242.080	3168.58	34.20	-140.83	-349.26	1770870.12	14607200.71	40°13'12.112"N	80°31'57.637"W	376.58	248.039	2.17	0.60	8.65
3298.00	15.560	248.950	3258.46	37.35	-150.67	-371.01	1770848.38	14607190.88	40°13'12.015"N	80°31'57.918"W	400.44	247.898	2.37	1.42	7.39
3391.00	15.370	252.450	3348.09	38.46	-158.87	-394.40	1770825.00	14607182.68	40°13'11.936"N	80°31'58.220"W	425.20	248.060	1.02	-0.20	3.76
3484.00	14.700	250.870	3437.91	39.12	-166.45	-417.30	1770802.11	14607175.10	40°13'11.862"N	80°31'58.516"W	449.27	248.254	0.84	-0.72	-1.70
3577.00	13.840	248.300	3528.04	40.57	-174.43	-438.79	1770780.63	14607167.13	40°13'11.784"N	80°31'58.794"W	472.19	248.321	1.15	-0.92	-2.76
3670.00	13.740	248.120	3618.36	42.52	-182.66	-459.37	1770760.06	14607158.90	40°13'11.704"N	80°31'59.060"W	494.35	248.316	0.12	-0.11	-0.19
3762.00	13.010	248.160	3707.86	44.42	-190.58	-479.12	1770740.31	14607150.98	40°13'11.627"N	80°31'59.315"W	515.63	248.308	0.79	-0.79	0.04
3855.00	12.790	250.410	3798.51	45.85	-197.93	-498.54	1770720.90	14607143.64	40°13'11.555"N	80°31'59.565"W	536.39	248.346	0.59	-0.24	2.42
3948.00	14.210	258.530	3888.95	45.31	-203.65	-519.42	1770700.02	14607137.92	40°13'11.500"N	80°31'59.835"W	557.92	248.591	2.54	1.53	8.73
4042.00	14.510	260.730	3980.01	42.72	-207.84	-542.35	1770677.10	14607133.73	40°13'11.459"N	80°32'00.131"W	580.81	249.032	0.66	0.32	2.34
4134.00	13.610	260.630	4069.26	39.83	-211.46	-564.41	1770655.06	14607130.11	40°13'11.425"N	80°32'00.416"W	602.72	249.461	0.98	-0.98	-0.11
4227.00	14.380	258.680	4159.50	37.33	-215.51	-586.53	1770632.95	14607126.06	40°13'11.386"N	80°32'00.701"W	624.87	249.825	0.97	0.83	-2.10
4320.00	15.180	252.720	4249.42	36.35	-221.39	-609.48	1770610.00	14607120.18	40°13'11.329"N	80°32'00.997"W	648.45	250.036	1.85	0.86	-6.41
4416.00	13.780	252.280	4342.37	36.66	-228.61	-632.37	1770587.12	14607112.97	40°13'11.259"N	80°32'01.293"W	672.43	250.125	1.46	-1.46	-0.46
4506.00	13.390	247.190	4429.86	37.94	-235.91	-652.19	1770567.31	14607105.67	40°13'11.188"N	80°32'01.549"W	693.55	250.114	1.40	-0.43	-5.66
4598.00	13.240	241.650	4519.39	41.18	-245.04	-671.28	1770548.22	14607096.54	40°13'11.099"N	80°32'01.795"W	714.61	249.946	1.40	-0.16	-6.02
4691.00	14.150	244.850	4609.74	44.99	-254.93	-690.95	1770528.57	14607086.66	40°13'11.002"N	80°32'02.050"W	736.48	249.748	1.27	0.98	3.44
4784.00	14.560	244.640	4699.84	48.40	-264.77	-711.80	1770507.72	14607076.82	40°13'10.906"N	80°32'02.319"W	759.45	249.596	0.44	0.44	-0.23
4877.00	13.760	241.560	4790.01	52.39	-275.04	-732.09	1770487.44	14607066.55	40°13'10.805"N	80°32'02.581"W	782.05	249.409	1.18	-0.86	-3.31
4970.00	14.400	244.190	4880.22	56.45	-285.35	-752.23	1770467.31	14607056.25	40°13'10.704"N	80°32'02.842"W	804.53	249.226	0.97	0.69	2.83
5062.00	14.980	244.610	4969.21	60.04	-295.43	-773.27	1770446.28	14607046.18	40°13'10.606"N	80°32'03.114"W	827.78	249.091	0.64	0.63	0.46
5155.00	14.000	243.940	5059.25	63.66	-305.52	-794.23	1770425.32	14607036.09	40°13'10.507"N	80°32'03.384"W	850.97	248.959	1.07	-1.05	-0.72
5247.00	13.120	242.550	5148.69	67.40	-315.22	-813.49	1770406.07	14607026.39	40°13'10.412"N	80°32'03.633"W	872.43	248.819	1.02	-0.96	-1.51
5340.00	13.890	246.290	5239.12	70.72	-324.58	-833.08	1770386.49	14607017.04	40°13'10.321"N	80°32'03.887"W	894.08	248.714	1.25	0.83	4.02
5433.00	13.640	245.480	5329.45	73.55	-333.62	-853.28	1770366.30	14607008.00	40°13'10.253"N	80°32'04.148"W	916.18	248.645	0.34	-0.27	-0.87
5500.00	13.890	244.760	5394.52	75.81	-340.33	-867.74	1770351.84	14607001.29	40°13'10.167"N	80°32'04.334"W	932.09	248.585	0.45	0.37	-1.07

NOV 13 2017



Southwestern Energy

Actual Wellpath Report

James Seabright BRK 6H AWP Proj: 15906



REFERENCE WELLPATH IDENTIFICATION

Operator	SOUTHWESTERN ENERGY
Area	Brooke County, WV
Field	Brooke
Facility	James Seabright BRK Pad
Slot	Slot 6H
James Seabright BRK 6H	Well
James Seabright BRK 6H AWP	Wellbore

WELLPATH DATA (183 stations)

MD	Inclination	Azimuth	TVD	Vert Sect	North	East	Grid East	Grid North	Latitude	Longitude	Closure Dist	Closure Dir	DLS	Build Rate	Turn Rate
10229.00	88.620	152.720	6135.39	4388.57	-4382.79	665.27	1771884.27	14602960.37	40°12'30.14"N	80°31'44.849"W	4433.00	171.369	6.12	0.04	-6.12
10322.00	88.770	154.740	6137.51	4480.26	-4466.16	706.42	1771925.40	14602877.04	40°12'29.314"N	80°31'44.324"W	4521.68	171.012	2.18	0.16	2.17
10415.00	88.550	157.410	6139.68	4572.49	-4551.14	744.12	1771963.09	14602792.09	40°12'28.473"N	80°31'43.844"W	4611.57	170.714	2.88	-0.24	2.87
10507.00	88.620	156.090	6141.96	4663.87	-4635.64	780.43	1771999.38	14602707.62	40°12'27.636"N	80°31'43.382"W	4700.88	170.444	1.44	0.06	-1.43
10600.00	88.830	154.130	6144.03	4755.91	-4719.98	819.56	1772038.49	14602623.32	40°12'26.800"N	80°31'42.884"W	4790.60	170.150	2.12	0.23	-2.11
10693.00	88.800	155.060	6145.95	4847.83	-4803.97	859.45	1772078.37	14602539.36	40°12'25.968"N	80°31'42.375"W	4880.24	169.857	1.00	-0.03	1.00
10785.00	88.890	155.600	6147.80	4938.93	-4887.55	897.84	1772116.75	14602455.81	40°12'25.140"N	80°31'41.886"W	4969.33	169.591	0.59	0.10	0.59
10878.00	88.920	158.060	6149.58	5031.33	-4973.03	934.42	1772153.31	14602370.36	40°12'24.294"N	80°31'41.421"W	5060.05	169.358	2.64	0.03	2.65
10971.00	88.800	159.280	6151.43	5124.01	-5059.64	968.24	1772187.12	14602283.79	40°12'23.436"N	80°31'40.991"W	5151.45	169.167	1.32	-0.13	1.31
11064.00	88.890	159.550	6153.31	5216.78	-5146.68	1000.93	1772219.80	14602196.78	40°12'22.574"N	80°31'40.575"W	5243.11	168.994	0.31	0.10	0.29
11157.00	88.920	161.510	6155.08	5309.66	-5234.34	1031.93	1772250.78	14602109.15	40°12'21.706"N	80°31'40.182"W	5335.09	168.847	2.11	0.03	2.11
11250.00	89.110	164.100	6156.68	5402.62	-5322.90	1060.29	1772279.13	14602020.63	40°12'20.830"N	80°31'39.822"W	5427.47	168.734	1.58	0.20	1.57
11343.00	89.110	164.100	6158.13	5495.61	-5412.07	1086.64	1772305.48	14601930.41	40°12'19.947"N	80°31'39.489"W	5520.08	168.647	1.21	0.00	1.22
11435.00	88.980	159.070	6159.66	5587.53	-5499.32	1115.69	1772334.52	14601844.27	40°12'19.083"N	80°31'39.120"W	5611.35	168.532	5.47	-0.14	-5.47
11528.00	89.050	153.570	6161.26	5679.80	-5584.44	1153.02	1772371.83	14601759.18	40°12'18.240"N	80°31'38.645"W	5702.23	168.334	5.91	0.06	-5.91
11621.00	89.050	152.340	6162.80	5771.29	-5667.26	1195.30	1772414.10	14601676.40	40°12'17.420"N	80°31'38.106"W	5791.94	168.090	1.32	0.00	-1.32
11714.00	89.050	151.530	6164.34	5862.47	-5749.31	1239.05	1772457.83	14601594.37	40°12'16.606"N	80°31'37.548"W	5881.31	167.838	0.87	0.00	-0.87
11806.00	88.890	151.160	6166.00	5952.47	-5830.03	1283.16	1772501.92	14601513.69	40°12'15.806"N	80°31'36.985"W	5969.57	167.577	0.44	-0.17	-0.40
11899.00	88.950	154.370	6167.75	6043.89	-5912.70	1325.71	1772544.45	14601431.05	40°12'14.987"N	80°31'36.442"W	6059.50	167.362	3.45	0.06	3.45
11992.00	88.950	158.620	6169.46	6136.21	-5997.95	1362.78	1772581.51	14601345.84	40°12'14.143"N	80°31'35.970"W	6150.82	167.199	4.57	0.00	4.57
12085.00	89.080	159.530	6171.06	6228.95	-6084.80	1395.99	1772614.71	14601259.02	40°12'13.283"N	80°31'35.548"W	6242.88	167.079	0.99	0.14	0.98
12178.00	88.950	157.120	6172.65	6321.59	-6171.20	1430.34	1772649.04	14601172.65	40°12'12.427"N	80°31'35.111"W	6334.79	166.951	2.59	-0.14	-2.59
12270.00	89.050	156.740	6174.26	6413.01	-6256.83	1466.38	1772685.07	14601088.05	40°12'11.589"N	80°31'34.653"W	6425.40	166.808	0.43	0.11	-0.41
12363.00	89.320	158.900	6175.58	6505.58	-6341.94	1501.48	1772720.16	14601001.98	40°12'10.736"N	80°31'34.206"W	6517.26	166.680	2.34	0.29	2.32
12456.00	89.420	159.800	6176.61	6598.36	-6428.96	1534.28	1772752.94	14600914.99	40°12'09.875"N	80°31'33.790"W	6609.50	166.577	0.97	0.11	0.97
12549.00	89.420	158.150	6177.55	6691.09	-6515.76	1567.64	1772782.29	14600828.22	40°12'09.015"N	80°31'33.366"W	6701.69	166.472	1.77	0.00	-1.77
12641.00	89.420	154.880	6178.48	6782.44	-6600.12	1604.30	1772813.93	14600743.89	40°12'08.180"N	80°31'32.899"W	6792.30	166.338	3.55	0.00	-3.55
12734.00	89.380	153.200	6179.45	6874.23	-6683.73	1645.00	1772863.63	14600660.32	40°12'07.351"N	80°31'32.380"W	6883.19	166.173	1.81	-0.04	-1.81
12827.00	89.380	156.300	6180.46	6966.19	-6767.83	1684.67	1772903.27	14600576.25	40°12'06.518"N	80°31'31.875"W	6974.35	166.022	3.33	0.00	3.33
12920.00	89.380	156.030	6181.47	7058.48	-6852.89	1722.25	1772940.84	14600491.22	40°12'05.676"N	80°31'31.396"W	7065.99	165.893	0.29	0.00	-0.29

Office of Oil and Gas

NOV 13 2017

WV Department of Environmental Protection



Actual Wellpath Report

James Seabright BRK 6H AWP Proj: 15906'
Page 9 of 10



REFERENCE WELLPATH IDENTIFICATION			
Operator	SOUTHWESTERN ENERGY	Slot	Slot 6H
Area	Brooke County, WV	Well	James Seabright BRK 6H
Field	Brooke	Wellbore	James Seabright BRK 6H AWB
Facility	James Seabright BRK Pad		

WELLPATH COMPOSITION - Ref Wellbore: James Seabright BRK 6H AWB Ref Wellpath: James Seabright BRK 6H AWP Proj: 15906'				
Start MD [ft]	End MD [ft]	Positional Uncertainty Model	Log Name/Comment	Wellbore
26.00	260.00	OWSG EMS rev2 - Standard	01 MSS <17.5"> (167'-260')	James Seabright BRK 6H AWB
260.00	1670.00	BHI NaviTrak (Axial)	02_BHI APS EM <12.25"> (260')(448'-1670')	James Seabright BRK 6H AWB
1670.00	5433.00	BHI NaviTrak (Axial)	03_BHI APS EM <8.75"> (1670')(1810'-5433')	James Seabright BRK 6H AWB
5433.00	15885.00	BHI AutoTrak Curve (Short)	04_BHI AT Curve <8.5">(8433')(5500'-15885')	James Seabright BRK 6H AWB
15885.00	15906.00	Blind Drilling (std)	Projection to bit	James Seabright BRK 6H AWB

RECEIVED
 Office of Oil and Gas
 NOV 13 2017
 WV Department of
 Environmental Protection



Actual Wellpath Report

James Seabright BRK 6H AWP Proj: 15906'
Page 10 of 10



REFERENCE WELLPATH IDENTIFICATION			
Operator	SOUTHWESTERN ENERGY	Slot	Slot 6H
Area	Brooke County, WV	Well	James Seabright BRK 6H
Field	Brooke	Wellbore	James Seabright BRK 6H AWB
Facility	James Seabright BRK Pad		

WELLPATH COMMENTS				
MD [ft]	Inclination [°]	Azimuth [°]	TVD [ft]	Comment
167.00	0.800	137.500	167.00	MSS <17.5"> (167'-260')
448.00	1.280	105.340	447.95	BHI APS EM <12.25"> (260')(448'-1670')
1810.00	4.580	256.840	1805.85	BHI APS EM <8.75"> (1670')(1810'-5433')
5500.00	13.890	244.760	5394.52	BHI AT Curve <8.5">(5433')(5500'-15885')
15906.00	88.860	158.040	6235.90	Projection to Bit

COMMENTS
<p>Wellpath general comments API: 47-009-00176-0000 Job#: 8572886 Rig: SDC-46 Duration: 05/27/17 - 06/06/17</p>

RECEIVED
 Office of Oil and Gas
 NOV 13 2017
 WV Department of
 Environmental Protection