

SURFACE HOLE DEC. LONG: 80.602071
SURVEYED LONG: 80° 36' 07.5"

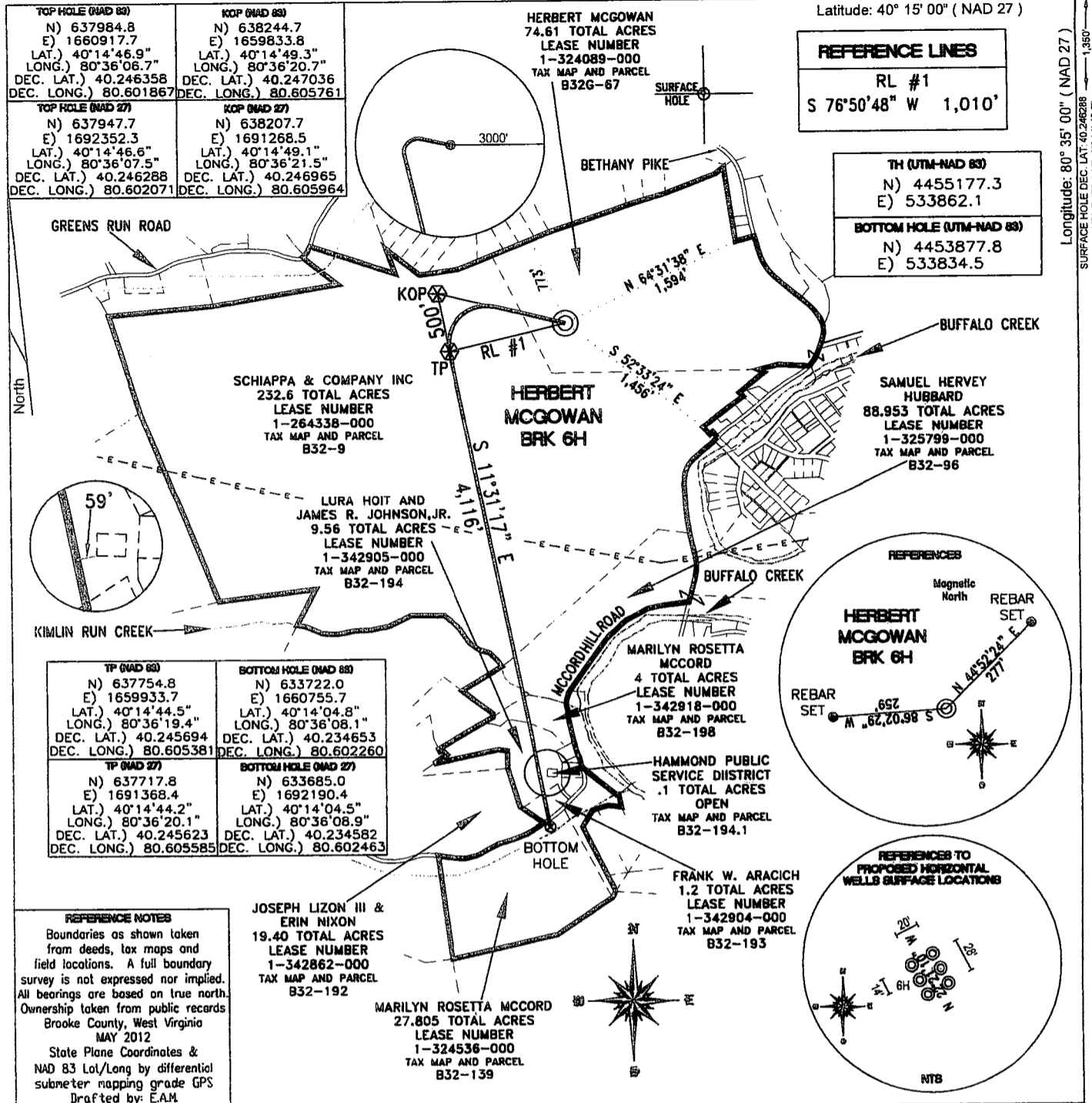
5,230'

Latitude: 40° 15' 00" (NAD 27)

Longitude: 80° 35' 00" (NAD 27)
SURFACE HOLE DEC. LAT: 40.246288
SURVEYED LAT: 40° 14' 46.6"

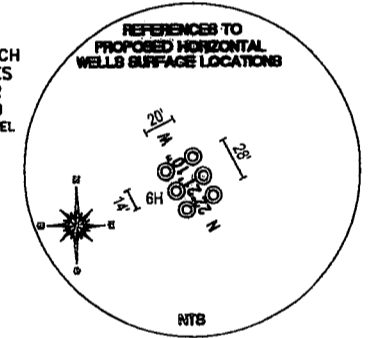
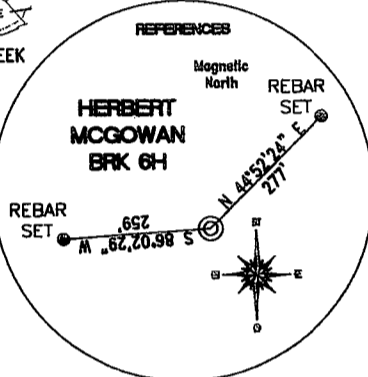
REFERENCE LINES
RL #1
S 76°50'48" W 1,010'

TH (UTM-NAD 83)
N) 4455177.3
E) 533862.1
BOTTOM HOLE (UTM-NAD 83)
N) 4453877.8
E) 533834.5



TOP HOLE (NAD 83) N) 637984.8 E) 1660917.7 LAT.) 40°14'46.9" LONG.) 80°36'06.7" DEC. LAT.) 40.246358 DEC. LONG.) 80.601867	KOP (NAD 83) N) 638244.7 E) 1659833.8 LAT.) 40°14'49.3" LONG.) 80°36'20.7" DEC. LAT.) 40.247036 DEC. LONG.) 80.605761
TOP HOLE (NAD 27) N) 637947.7 E) 1692352.3 LAT.) 40°14'46.6" LONG.) 80°36'07.5" DEC. LAT.) 40.246288 DEC. LONG.) 80.602071	KOP (NAD 27) N) 638207.7 E) 1691268.5 LAT.) 40°14'49.1" LONG.) 80°36'21.5" DEC. LAT.) 40.246965 DEC. LONG.) 80.605964

TP (NAD 83) N) 637754.8 E) 1659933.7 LAT.) 40°14'44.5" LONG.) 80°36'19.4" DEC. LAT.) 40.245694 DEC. LONG.) 80.605381	BOTTOM HOLE (NAD 83) N) 633722.0 E) 1660755.7 LAT.) 40°14'04.8" LONG.) 80°36'08.1" DEC. LAT.) 40.234653 DEC. LONG.) 80.602260
TP (NAD 27) N) 637717.8 E) 1691368.4 LAT.) 40°14'44.2" LONG.) 80°36'20.1" DEC. LAT.) 40.245623 DEC. LONG.) 80.605585	BOTTOM HOLE (NAD 27) N) 633685.0 E) 1692190.4 LAT.) 40°14'04.5" LONG.) 80°36'08.9" DEC. LAT.) 40.234582 DEC. LONG.) 80.602463



REFERENCE NOTES
Boundaries as shown taken from deeds, tax maps and field locations. A full boundary survey is not expressed nor implied. All bearings are based on true north. Ownership taken from public records Brooke County, West Virginia MAY 2012
State Plane Coordinates & NAD 83 Lat/Long by differential submeter mapping grade GPS
Drafted by: E.A.M.

JOSEPH LIZON III & ERIN NIXON
19.40 TOTAL ACRES
LEASE NUMBER 1-342862-000
TAX MAP AND PARCEL B32-192

MARILYN ROSETTA MCCORD
27.805 TOTAL ACRES
LEASE NUMBER 1-324536-000
TAX MAP AND PARCEL B32-139

FRANK W. ARACICH
1.2 TOTAL ACRES
LEASE NUMBER 1-342904-000
TAX MAP AND PARCEL B32-193

HAMMOND PUBLIC SERVICE DISTRICT
.1 TOTAL ACRES
OPEN
TAX MAP AND PARCEL B32-194.1

MARILYN ROSETTA MCCORD
4 TOTAL ACRES
LEASE NUMBER 1-342918-000
TAX MAP AND PARCEL B32-198

SCHIAPPA & COMPANY INC
232.6 TOTAL ACRES
LEASE NUMBER 1-264338-000
TAX MAP AND PARCEL B32-9

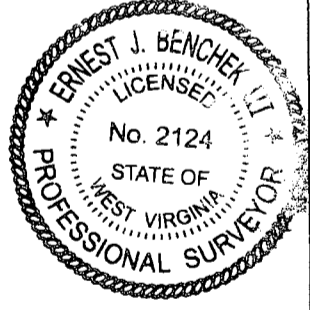
HERBERT MCGOWAN BRK 6H

SAMUEL HERVEY HUBBARD
88.953 TOTAL ACRES
LEASE NUMBER 1-325799-000
TAX MAP AND PARCEL B32-96

HERBERT MCGOWAN
74.61 TOTAL ACRES
LEASE NUMBER 1-324089-000
TAX MAP AND PARCEL B32G-67

FILE #: CHE 092
DRAWING #: 2000
SCALE: 1" = 1200'
MINIMUM DEGREE OF ACCURACY: 1/200
PROVEN SOURCE: SUBMETER MAPPING
OF ELEVATION: GRADE GPS

I, THE UNDERSIGNED, HEREBY CERTIFY THAT THIS PLAT IS CORRECT TO THE BEST OF MY KNOWLEDGE AND BELIEF AND SHOWS ALL THE INFORMATION REQUIRED BY LAW AND THE REGULATIONS ISSUED AND PRESCRIBED BY THE DEPARTMENT OF ENVIRONMENTAL PROTECTION.
Signed: _____
L.L.S. #2124 : Ernest J. Benchek III



(+) DENOTES LOCATION OF WELL ON UNITED STATES TOPOGRAPHIC MAPS WVDEP
OFFICE OF OIL & GAS
601 57TH STREET
CHARLESTON, WV 25304

DATE: JUNE 25, 2012
OPERATOR'S WELL #: HERBERT MCGOWAN BRK 6H
API WELL #: 47 09 00151 H6A
STATE COUNTY PERMIT

Well Type: Oil Waste Disposal Production Deep
 Gas Liquid Injection Storage Shallow

WATERSHED: UPPER OHIO SOUTH ELEVATION: 990'
COUNTY/DISTRICT: BROOKE / BUFFALO QUADRANGLE: BETHANY, WV.
SURFACE OWNER: HERBERT MCGOWAN ACREAGE: 74.61 +/-
OIL & GAS ROYALTY OWNER: HERBERT MCGOWAN ACREAGE: 463.838 +/-
LEASE NUMBERS: _____

DRILL CONVERT DRILL DEEPER REDRILL FRACTURE OR STIMULATE
PLUG OFF FORMATION PERFORATE NEW FORMATION PLUG & ABANDON
CLEAN OUT & REPLUG OTHER CHANGE (SPECIFY): _____

TARGET FORMATION: MARCELLUS ESTIMATED DEPTH: TVD: 5,590' TMD: 10,165'
WELL OPERATOR: CHESAPEAKE APPALACHIA, LLC. DESIGNATED AGENT: ERIC GILLESPIE
ADDRESS: PO BOX 18496 ADDRESS: PO BOX 6070
CITY: OKLAHOMA CITY STATE: OK ZIP CODE: 73154-0496 CITY: CHARLESTON STATE: WV ZIP CODE: 25362

10/19/2012

900151

