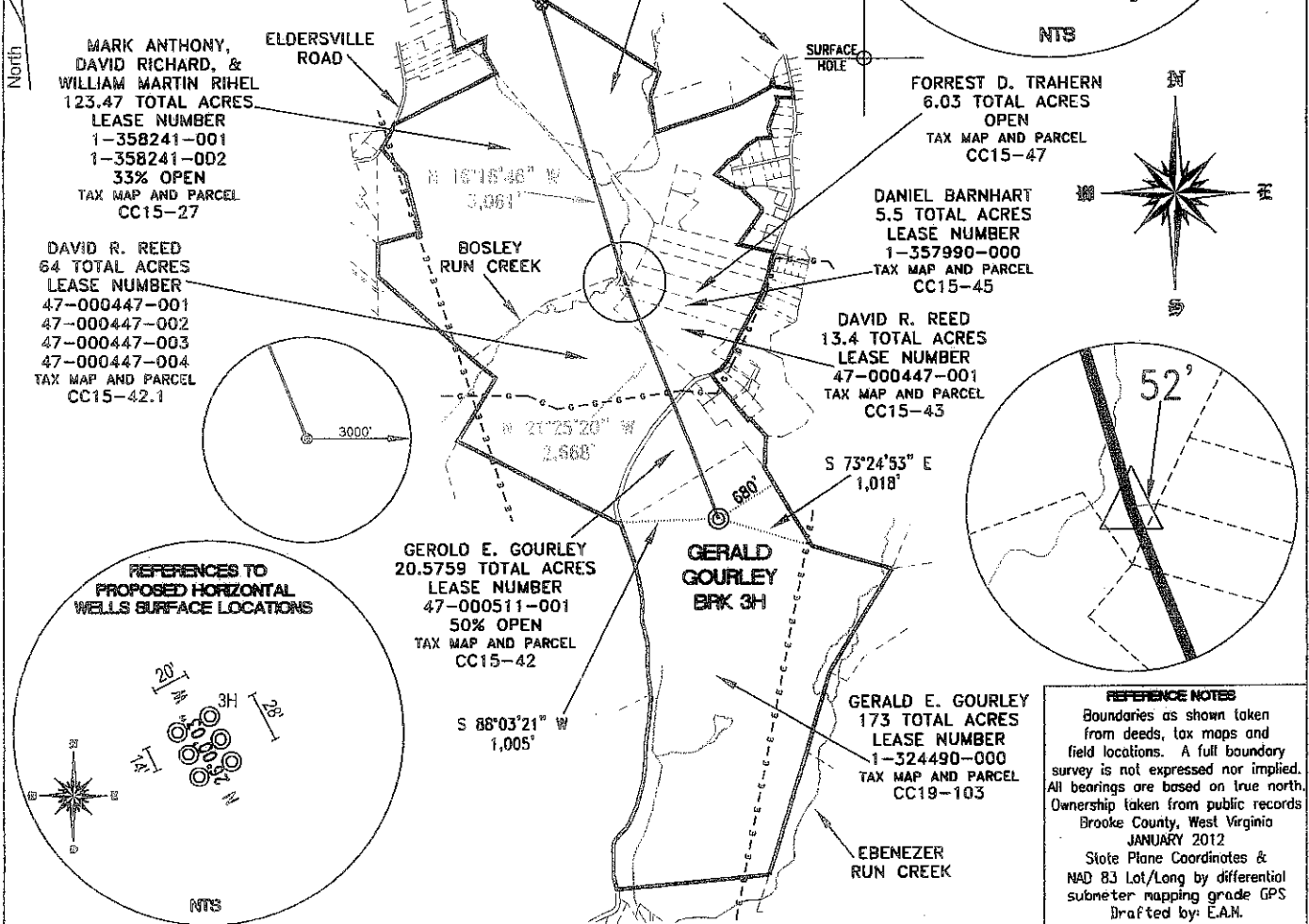


TOP HOLE (NAD 83) N) 664096.4 E) 1672982.5 LAT.) 40°19'06.3" LONG.) 80°33'35.2" DEC. LAT.) 40.318427 DEC. LONG.) 80.559754	BOTTOM HOLE (NAD 83) N) 669518.0 E) 1671150.0 LAT.) 40°19'59.7" LONG.) 80°33'59.6" DEC. LAT.) 40.333248 DEC. LONG.) 80.566558	INFLEXION POINT (NAD 83) N) 666580.2 E) 1672008.0 LAT.) 40°19'30.8" LONG.) 80°33'48.1" DEC. LAT.) 40.325212 DEC. LONG.) 80.563354	INFLEXION POINT (NAD 27) N) 666543.1 E) 1703442.3 LAT.) 40°19'30.5" LONG.) 80°33'48.8" DEC. LAT.) 40.325143 DEC. LONG.) 80.563560
TOP HOLE (NAD 27) N) 664059.3 E) 1704416.8 LAT.) 40°19'06.1" LONG.) 80°33'35.9" DEC. LAT.) 40.318357 DEC. LONG.) 80.559960	BOTTOM HOLE (NAD 27) N) 669480.9 E) 1702584.4 LAT.) 40°19'59.4" LONG.) 80°34'00.3" DEC. LAT.) 40.333179 DEC. LONG.) 80.566762		

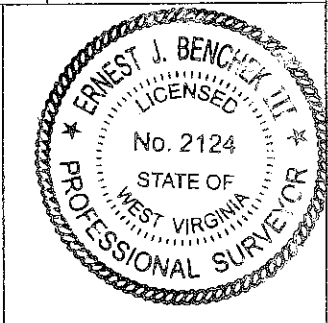
TH (UTM-NAD 83) N) 4463193.5 E) 537404.1
BOTTOM HOLE (UTM-NAD 83) N) 4464835.7 E) 536818.2



FILE #: CHE 093
 DRAWING #: 1996
 SCALE: 1" = 1800'
 MINIMUM DEGREE OF ACCURACY: 1/200
 PROVEN SOURCE OF ELEVATION: SUBMETER MAPPING GRADE GPS

I, THE UNDERSIGNED, HEREBY CERTIFY THAT THIS PLAT IS CORRECT TO THE BEST OF MY KNOWLEDGE AND BELIEF AND SHOWS ALL THE INFORMATION REQUIRED BY LAW AND THE REGULATIONS ISSUED AND PRESCRIBED BY THE DEPARTMENT OF ENVIRONMENTAL PROTECTION.

Signed: _____
 L.L.S. #2124 : Ernest J. Benchek III



(+) DENOTES LOCATION OF WELL ON UNITED STATES TOPOGRAPHIC MAPS WVDEP OFFICE OF OIL & GAS 601 57TH STREET CHARLESTON, WV 25304

Well Type: Oil Waste Dipasal Production Deep Gas Liquid Injection Storage Shallow

WATERSHED: UPPER OHIO SOUTH ELEVATION: 1160'

COUNTY/DISTRICT: BROOKE / CROSS CREEK QUADRANGLE: STEUBENVILLE EAST, WV.

SURFACE OWNER: GERALD GOURLEY ACREAGE: 173.0 +/-

OIL & GAS ROYALTY OWNER: GERALD GOURLEY ACREAGE: 474.5759 +/-

LEASE NUMBERS: _____

DRILL CONVERT DRILL DEEPER REDRILL FRACTURE OR STIMULATE
 PLUG OFF FORMATION PERFORATE NEW FORMATION PLUG & ABANDON
 CLEAN OUT & REPLUG OTHER CHANGE (SPECIFY): _____

TARGET FORMATION: MARCELLUS ESTIMATED DEPTH: TVD: 5,696' TMD: 11,220'

WELL OPERATOR: CHESAPEAKE APPALACHIA, LLC. DESIGNATED AGENT: ERIC GILLESPIE
 ADDRESS: PO BOX 18496 ADDRESS: PO BOX 6070
 CITY: OKLAHOMA CITY STATE: OK ZIP CODE: 73154-0496 CITY: CHARLESTON STATE: WV ZIP CODE: 25362

